

ISSUED FOR

1	2021-02-26	STAGE 3 MOH
2	2021-05-20	SCHEMATIC DESIGN
3	2021-06-25	QA 50%
4	2021-07-23	100% DESIGN DEVELOPMENT QA
5	2021-08-06	BID BPO1
6	2021-08-06	BUILDING PERMIT
7	2021-08-06	SITE PLAN APPROVAL
8	2021-08-18	MOH 3.2
9	2021-09-09	BID BPO1 ADDENDUM NO. 2
10	2021-10-06	BPO3 100% QA
11	2021-10-15	BID BPO3
12	2021-10-26	BPO2 50% QA
13	2021-10-29	MOH Stage 4.1
14	2021-12-03	BPO2 100% QA
15	2021-12-06	BUILDING PERMIT RESUBMIT 1
16	2021-12-17	BID BPO2
17	2022-02-24	SP 21-156 W7 REVISION 1

METRIC
 THIS DRAWING IS COPYRIGHTED AND MUST NOT BE REPRODUCED, COPIED, OR REVISED WITHOUT WRITTEN PERMISSION.
 ALL DIMENSIONS ARE IN MILLIMETERS UNLESS OTHERWISE NOTED.
 VERIFY DIMENSIONS.
 DO NOT SCALE THIS DRAWING.
 REPORT INCONSISTENCIES AND OMISSIONS TO THE CONSULTANT FOR CLARIFICATION BEFORE COMMENCING WITH THE WORK.
 DEVIATIONS FROM THE CONTRACT DOCUMENTS WITHOUT WRITTEN APPROVAL FROM THE CONSULTANT ARE SUBJECT TO CORRECTION AT THE CONTRACTOR'S EXPENSE.

CLIENT
 TRILLIUM HEALTH PARTNERS
 150 DERRWAY DR, ETOBICOKE
 TORONTO, ON M9C 1A5
 TEL: (416) 294-8171 WEBSITE: trilliumhealthpartners.ca

CONSTRUCTION MANAGER
 KENADAN CONTRACTING LTD.
 7881 BERRYPURCH DRIVE
 MISSISSAUGA, ON L5N 0G5
 TEL: (905) 910-2600 WEBSITE: www.kenadan.com/

ARCHITECT & PRIME CONSULTANT
 DIALOG
 35 JOHN STREET, SUITE 500
 TORONTO, ON M5V 2S8
 TEL: (416) 966-0220 WEBSITE: dialogdesign.ca

STRUCTURAL ENGINEER
 DIALOG

MECHANICAL ENGINEER
 DIALOG

ELECTRICAL ENGINEER
 DIALOG

LANDSCAPE ARCHITECT
 DIALOG

CIVIL ENGINEER
 MTE CONSULTANTS INC.
 1018 SUTTON DRIVE, UNIT A
 BURLINGTON, ON L7R 1B8
 TEL: (905) 639-2522 WEBSITE: mte85.com

SECURITY
 THE ATARIAN GROUP INC.
 285-180 WOODWARD DRIVE
 OTTAWA, ON K1G 2R7
 TEL: (613) 617-5999 WEBSITE: theatariangroup.com

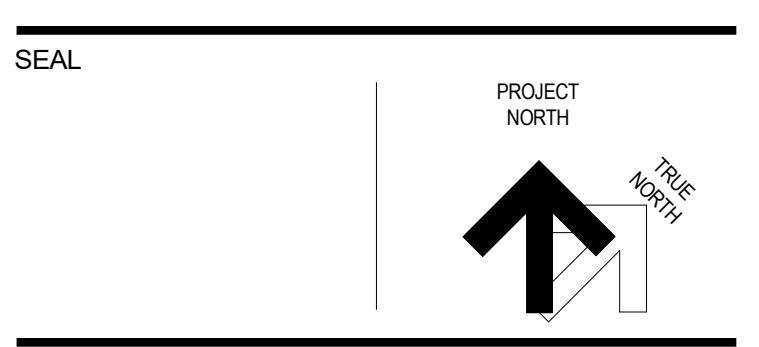
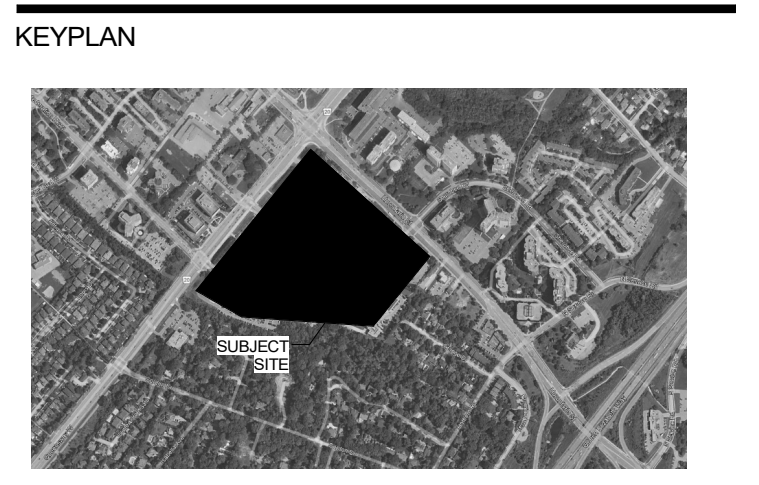
SIGNAGE AND WAYFINDING
 ENTRIO
 33 HARBOUR SQUARE, SUITE 202
 TORONTO, ON M5J 2G2
 TEL: (416) 368-6868 WEBSITE: entrio.com

VIBRATION, NOISE, ACOUSTICS
 THORNTON/MASETTI
 23366 REVELS AVENUE
 MISSISSAUGA, ON L5G 4S5
 TEL: (905) 271-1858 WEBSITE: thortonmasetti.com

BUILDING CODE
 LRI ENGINEERING INC.
 171 UNIVERSITY AVE, 3RD FLOOR, BOX 1
 TORONTO, ON M5H 1B3
 TEL: (416) 515-9331 WEBSITE: lri-engine.com

VERTICAL TRANSPORTATION
 SOBEMAN ENGINEERING INC.
 55 ST. CLAIR AVENUE WEST, SUITE 205
 TORONTO, ON M5V 1T7 WEBSITE: sobemanengineering.com

HARDWARE
 SPYDER
 35 HUDA RD
 WOODBRIDGE, ON L4H 3M5
 TEL: (847) 271-6469 WEBSITE: spyderinc.com



**THP M-SITE HOSPITAL
 PARKING STRUCTURE**

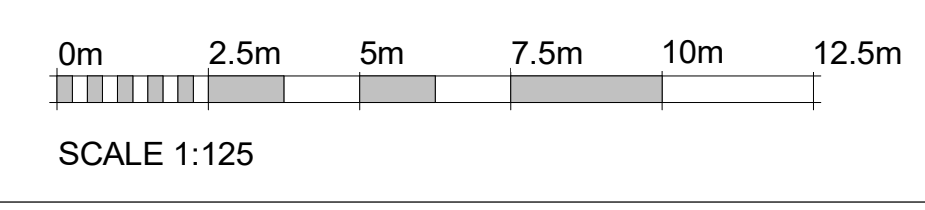
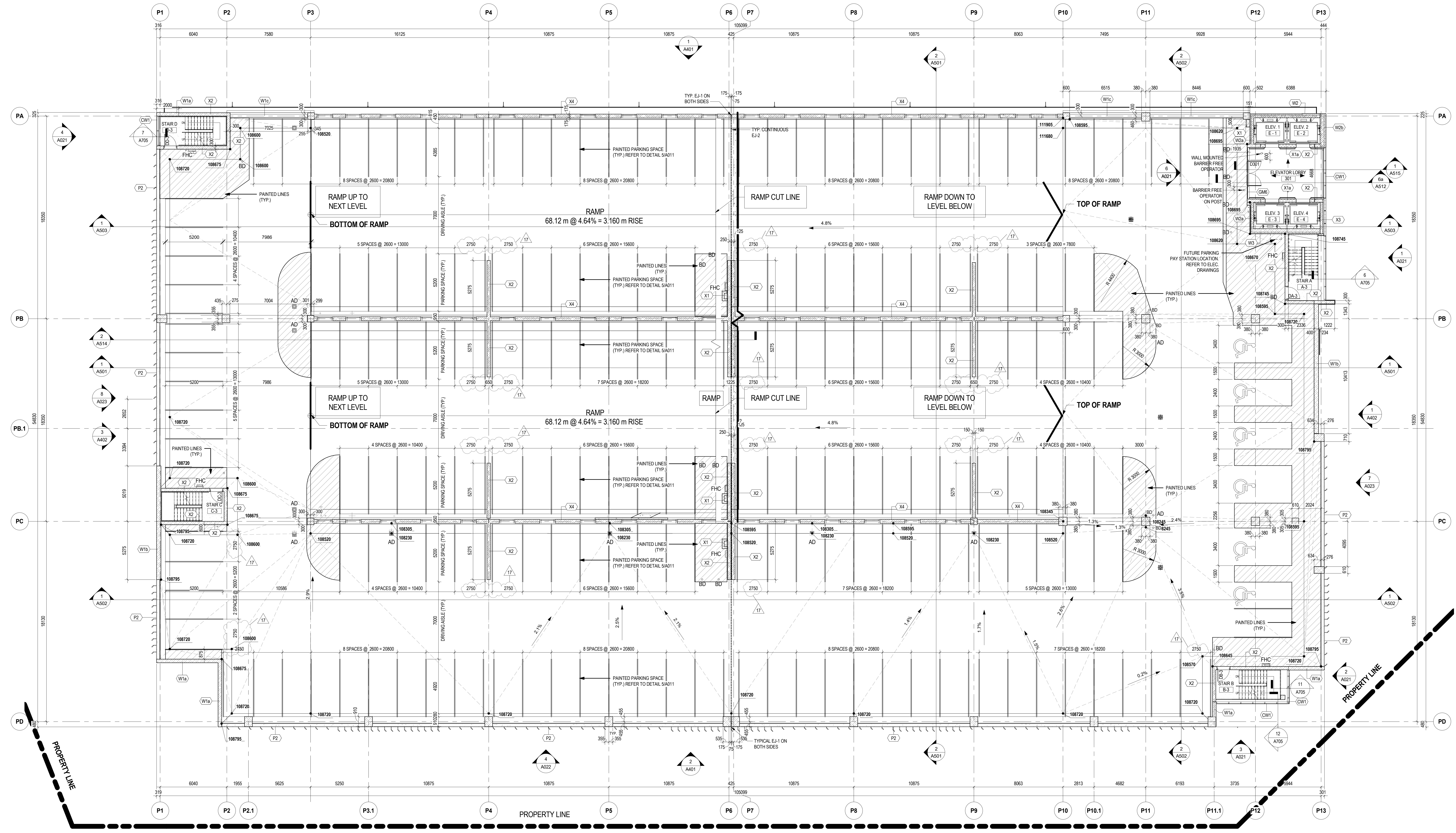
**FLOOR PLAN -
 PARKING LEVEL 3**

MISSISSAUGA HOSPITAL
 100 QUEENSWAY WEST
 MISSISSAUGA, ONTARIO
 L5B 1B8

DRAWN: Aulder CHECKED: Cheffer
 PLOT DATE: 2/24/2022 2:02:09 PM

A203

©RevLocal File\DLG_2003572_AR_THP_M_PARKING_3bsncrnt



FLOOR PLAN - PARKING LEVEL 3
 SCALE: 1:125 A203