

ISSUED FOR

1	2021-02-26	STAGE 3.2 MOH
2	2021-05-20	SCHEMATIC DESIGN
3	2021-06-25	QA 50%
4	2021-07-23	100% DESIGN DEVELOPMENT QA
5	2021-08-06	BID BP01
6	2021-08-06	BUILDING PERMIT
7	2021-08-06	SITE PLAN APPROVAL
8	2021-08-18	MOH 3.2
9	2021-09-09	BID BP01 ADDENDUM NO. 2
10	2021-10-06	BP03 100% QA
11	2021-10-15	BID BP03
12	2021-10-26	BP02 50% QA
13	2021-10-29	MOH Stage 4.1
14	2021-12-03	BP02 100% QA
15	2021-12-06	BUILDING PERMIT RESUBMIT 1
16	2021-12-17	BID BP02
17	2022-02-24	SP-21-156 W7 REVISION 1

METRIC
 THIS DRAWING IS COPYRIGHTED AND MUST NOT BE USED, REPRODUCED, OR REVISED WITHOUT WRITTEN PERMISSION. VERIFY DIMENSIONS.
 ALL DIMENSIONS ARE IN MILLIMETERS UNLESS OTHERWISE NOTED.
 REPORT INCONSISTENCIES AND OMISSIONS TO THE CONSULTANT FOR CLARIFICATION BEFORE COMMENCING WITH THE WORK.
 DEVIATIONS FROM THE CONTRACT DOCUMENTS WITHOUT WRITTEN APPROVAL FROM THE CONSULTANT ARE SUBJECT TO CORRECTION AT THE CONTRACTOR'S EXPENSE.

CLIENT
 TRILLIUM HEALTH PARTNERS
 150 BERRINGTON DRIVE, ETOBICOKE
 TORONTO, ON M9C 1A5
 TEL: (416) 291-8171 WEBSITE: trilliumhealthpartners.ca

CONSTRUCTION MANAGER
 KENADAN CONTRACTING LTD.
 780 BERRYPURCH DRIVE
 MISSISSAUGA, ON L5N 0G5
 TEL: (905) 910-2660 WEBSITE: www.kenadan.com/

ARCHITECT & PRIME CONSULTANT
 DIALOG
 35 JOHN STREET, SUITE 500
 TORONTO, ON M5V 2S8
 TEL: (416) 966-0220 WEBSITE: dialogdesign.ca

STRUCTURAL ENGINEER
 DIALOG

ELECTRICAL ENGINEER
 DIALOG

LANDSCAPE ARCHITECT
 DIALOG

CIVIL ENGINEER
 MTE CONSULTANTS INC.
 1018 SUTTON DRIVE, UNIT A
 BURLINGTON, ON L7R 1B8
 TEL: (905) 639-2322 WEBSITE: mte85.com

SECURITY
 THE ATARM GROUP INC.
 28-180 WOODWARD DRIVE
 OTTAWA, ON K1G 2R7
 TEL: (613) 617-5999 WEBSITE: theatarmgroup.com

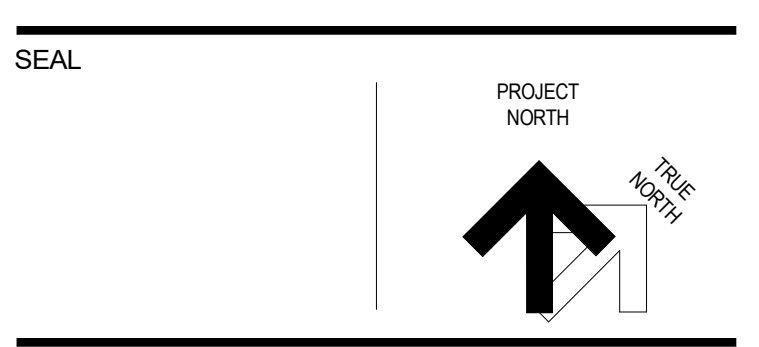
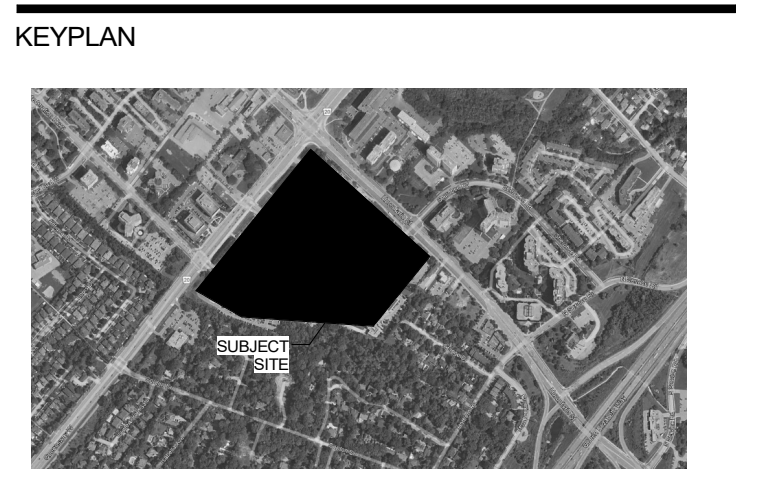
SIGNAGE AND WAYFINDING
 ENTRIO
 33 HARBOUR SQUARE, SUITE 202
 TORONTO, ON M5J 2G2
 TEL: (416) 363-6868 WEBSITE: entrio.com

VIBRATION, NOISE, ACOUSTICS
 THORNTON/MASTETT
 23366 REVELS AVENUE
 MISSISSAUGA, ON L5G 4S5
 TEL: (905) 271-1868 WEBSITE: thortontomastett.com

BUILDING CODE
 LRI ENGINEERING INC.
 171 UNIVERSITY AVE, 2ND FLOOR, BOX 1
 TORONTO, ON M5S 1B3
 TEL: (416) 515-9331 WEBSITE: lri.ca

VERTICAL TRANSPORTATION
 SOBEMAN ENGINEERING INC.
 55 ST. CLAIR AVENUE WEST, SUITE 205
 TORONTO, ON M5V 1Y7
 TEL: (416) 323-2133 WEBSITE: sobemanengineering.com

HARDWARE
 SPYDER
 35 HILDA RD
 WOODBRIDGE, ON L4H 3M5
 TEL: (847) 271-6469 WEBSITE: spydercan.com

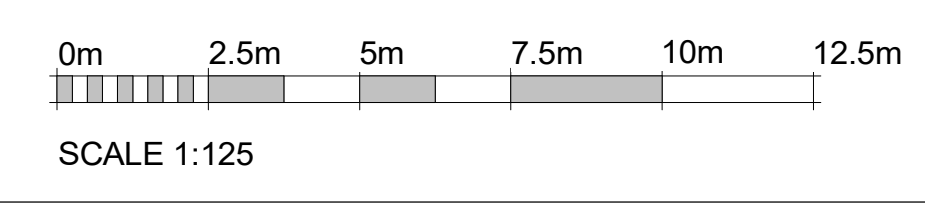
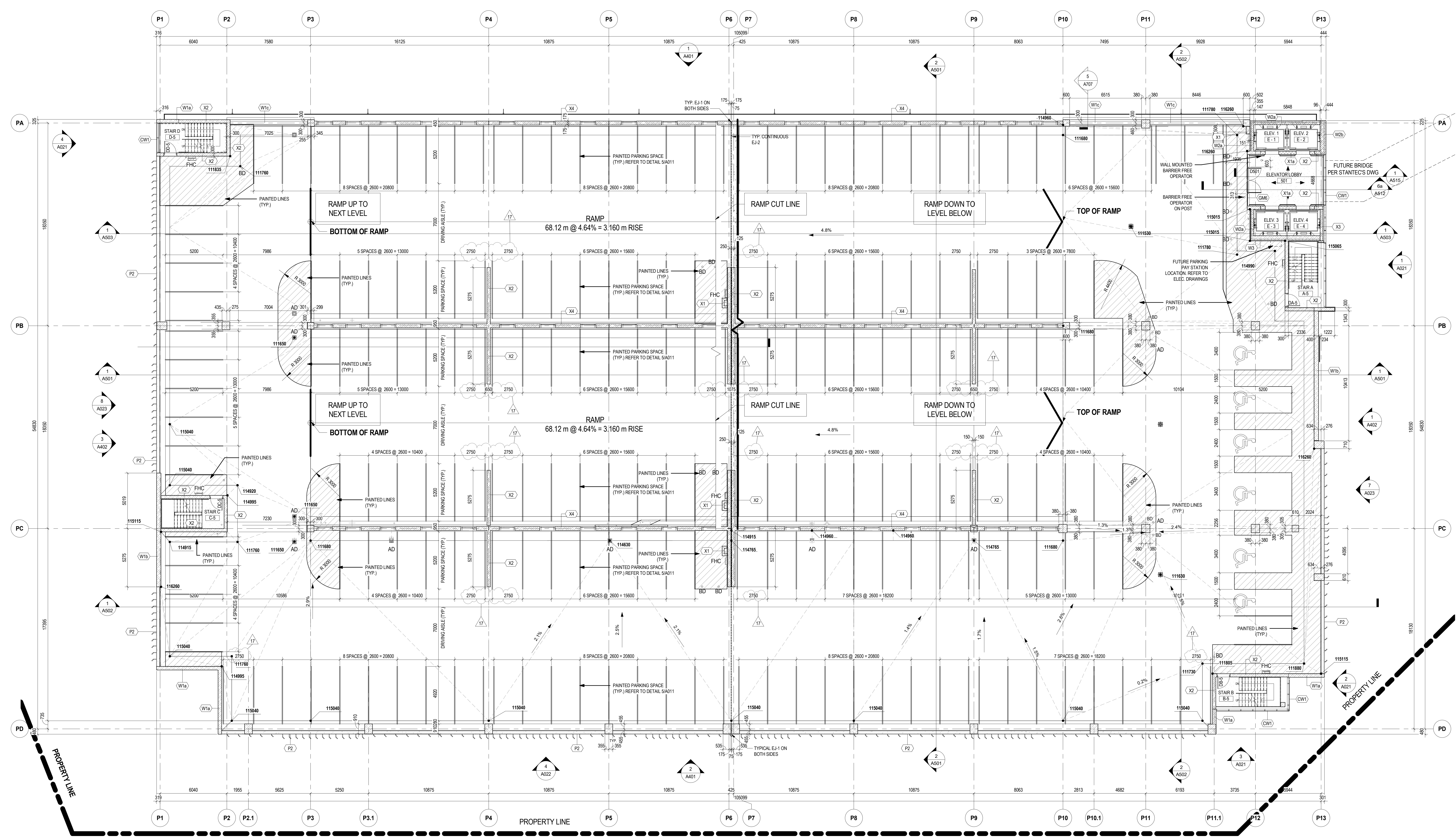


**THP M-SITE HOSPITAL
 PARKING STRUCTURE**

**FLOOR PLAN -
 PARKING LEVEL 5**

MISSISSAUGA HOSPITAL
 100 QUEENSWAY WEST
 MISSISSAUGA, ONTARIO
 L5B 1B8

**FLOOR PLAN -
 PARKING LEVEL 5**



**FLOOR PLAN -
 PARKING LEVEL 5**
 SCALE: 1: 125