

ISSUED FOR

1	2021-04-21	PRE-APPLICATION MEETING (PAM)
2	2021-05-20	SCHEMATIC DESIGN
3	2021-06-25	QA 50%
4	2021-07-23	100% DESIGN DEVELOPMENT QA
5	2021-08-06	BID BPO1
6	2021-08-06	BUILDING PERMIT
7	2021-08-06	SITE PLAN APPROVAL
8	2021-08-18	MOH 3.2
9	2021-10-15	BID BPO3
10	2021-10-26	BPO2 50% QA
11	2021-10-29	MOH Stage 4.1
12	2021-12-03	BPO2 100% QA
13	2021-12-06	BUILDING PERMIT RESUBMIT 1
14	2021-12-17	BID BPO2
15	2022-02-24	SP 21-156 W7 REVISION 1

**METRIC**  
 THIS DRAWING IS COPYRIGHTED AND MUST NOT BE USED, REPRODUCED, OR REVISED WITHOUT WRITTEN PERMISSION.  
 ALL DIMENSIONS ARE IN MILLIMETERS UNLESS OTHERWISE NOTED.  
 VERIFY DIMENSIONS.  
 DO NOT SCALE THIS DRAWING.  
 REPORT INCONSISTENCIES AND OMISSIONS TO THE CONSULTANT FOR CLARIFICATION BEFORE COMMENCING WITH THE WORK.  
 DEVIATIONS FROM THE CONTRACT DOCUMENTS WITHOUT WRITTEN APPROVAL FROM THE CONSULTANT ARE SUBJECT TO CORRECTION AT THE CONTRACTOR'S EXPENSE.

**CLIENT**  
 TRILLIUM HEALTH PARTNERS  
 150 DERRWAY DR, ETOBICOKE  
 TORONTO, ON M9C 1A5  
 TEL: (416) 291-8571 WEBSITE: trilliumhealthpartners.ca

**CONSTRUCTION MANAGER**  
 KENADAN CONTRACTING LTD.  
 780 RIVERFOREST DRIVE  
 MISSISSAUGA, ON L5N 0G5  
 TEL: (905) 910-2660 WEBSITE: www.kenadan.com/

**ARCHITECT & PRIME CONSULTANT**  
 DIALOG  
 35 JOHN STREET, SUITE 500  
 TORONTO, ON M5V 2S8  
 TEL: (416) 966-0220 WEBSITE: dialogdesign.ca

**STRUCTURAL ENGINEER**  
 DIALOG

**MECHANICAL ENGINEER**  
 DIALOG

**ELECTRICAL ENGINEER**  
 DIALOG

**LANDSCAPE ARCHITECT**  
 DIALOG

**CIVIL ENGINEER**  
 MTE CONSULTANTS INC.  
 1018 SUTTON DRIVE, UNIT A  
 BURLINGTON, ON L7R 1B6  
 TEL: (905) 638-2322 WEBSITE: mte85.com

**SECURITY**  
 THE ATARIAN GROUP INC.  
 28-180 WOODWARD DRIVE  
 OTTAWA, ON K2K 2R7  
 TEL: (613) 617-5998 WEBSITE: theatargroup.com

**SIGNAGE AND WAYFINDING**  
 ENTRIO  
 13 HARBOUR SQUARE, SUITE 202  
 TORONTO, ON M5J 2G2  
 TEL: (416) 368-6988 WEBSITE: entrio.com

**VIBRATION, NOISE, ACOUSTICS**  
 THORNTON/MASETTI  
 23366 REVELS AVENUE  
 MISSISSAUGA, ON L5G 4S5  
 TEL: (905) 271-1858 WEBSITE: thortonmasetti.com

**BUILDING CODE**  
 LRI ENGINEERING INC.  
 171 UNIVERSITY AVE, 2ND FLOOR, BOX 1  
 TORONTO, ON M5H 2B3  
 TEL: (416) 515-9331 WEBSITE: lri.ca

**VERTICAL TRANSPORTATION**  
 SOBEMAN ENGINEERING INC.  
 55 ST. CLAIR AVENUE WEST, SUITE 205  
 TORONTO, ON M5V 2Y7  
 TEL: (416) 323-2133 WEBSITE: sobemanengineering.com

**HARDWARE**  
 SPYDER  
 35 HILDA RD  
 WOODBRIDGE, ON L4H 3M5  
 TEL: (847) 271-6459 WEBSITE: spyder.ca

**KEYPLAN**

SEAL PROJECT NORTH

THP M-SITE HOSPITAL PARKING STRUCTURE

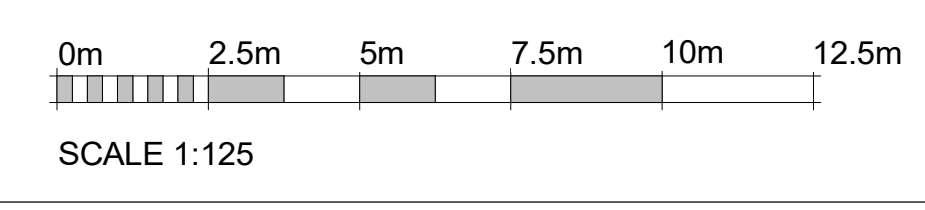
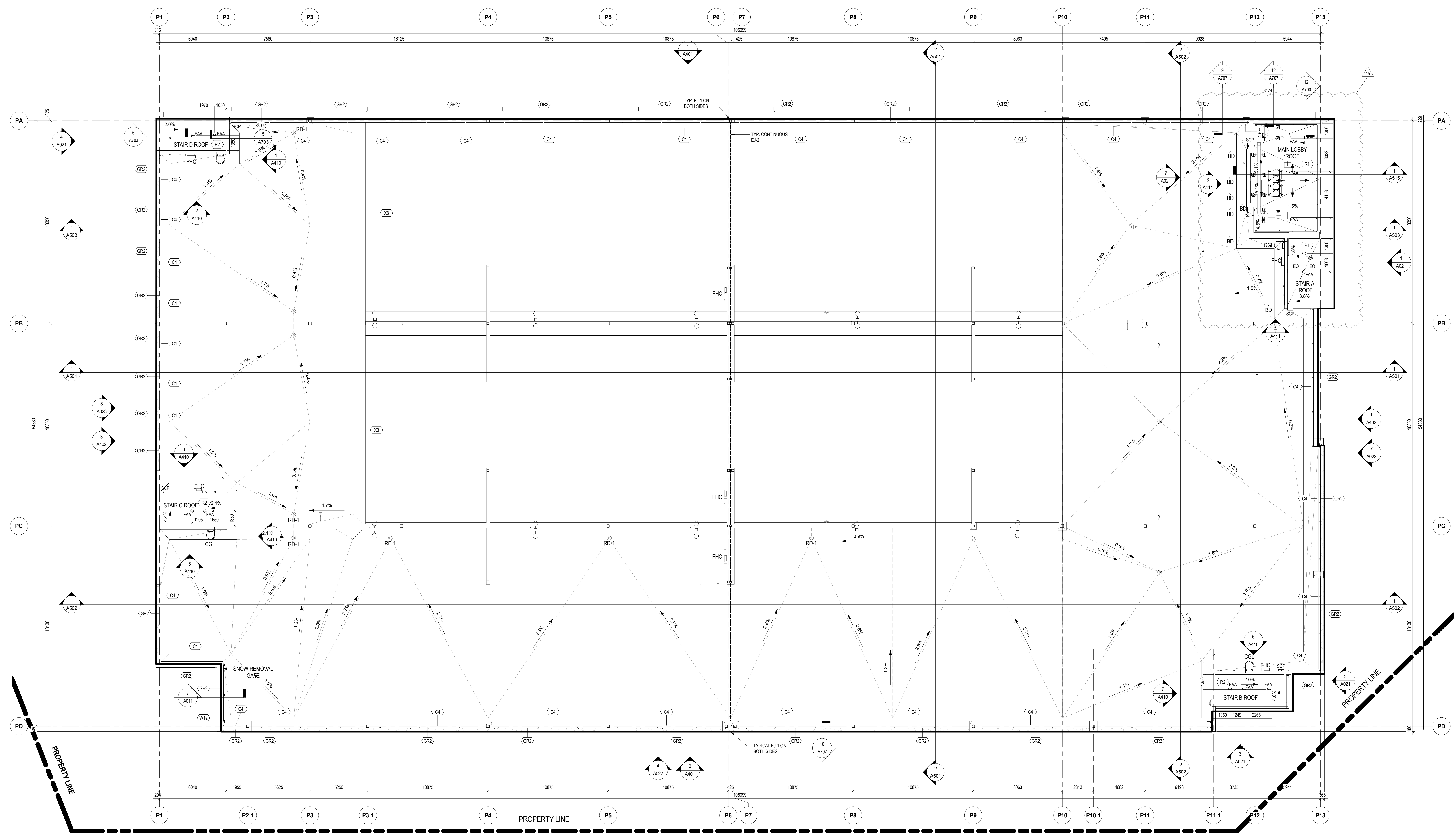
MISSISSAUGA HOSPITAL  
 100 QUEENSWAY WEST  
 MISSISSAUGA, ONTARIO  
 L5B 1B8

**ROOF PLAN**

DRAWN: Author CHECKED: Checker  
 PLOT DATE: 2/24/2022 2:02:24 PM

**A209**

SCALE: 1:125



ROOF PLAN 2 A209