

THIS DRAWING, AS AN INSTRUMENT OF SERVICE, IS PROVIDED BY AND IS THE PROPERTY OF GRAZIANI-CORAZZA ARCHITECTS INC. THE CONTRACTOR MUST VERIFY AND ACCEPT RESPONSIBILITY FOR ALL DIMENSIONS AND CONDITIONS ON SITE AND MUST NOTIFY GRAZIANI-CORAZZA ARCHITECTS INC. OF ANY VARIATIONS FROM THE SUPPLIED INFORMATION. GRAZIANI-CORAZZA ARCHITECTS INC. IS NOT RESPONSIBLE FOR THE ACCURACY OF SURVEY, STRUCTURAL, MECHANICAL, ELECTRICAL, AND OTHER ENGINEERING INFORMATION SHOWN ON THIS DRAWING. REFER TO THE APPROPRIATE ENGINEERING DRAWINGS BEFORE PROCEEDING WITH THE WORK. CONSTRUCTION MUST CONFORM TO ALL APPLICABLE CODES AND REQUIREMENTS OF THE AUTHORITIES HAVING JURISDICTION. UNLESS OTHERWISE NOTED, NO INVESTIGATION HAS BEEN UNDERTAKEN OR REPORTED ON BY THIS OFFICE IN REGARDS TO THE ENVIRONMENTAL CONDITION OF THIS SITE.

THIS DRAWING IS NOT TO BE SCALED. ALL ARCHITECTURAL SYMBOLS INDICATED ON THIS DRAWING ARE GRAPHIC REPRESENTATIONS ONLY.

CONDITIONS FOR ELECTRONIC INFORMATION TRANSFER:

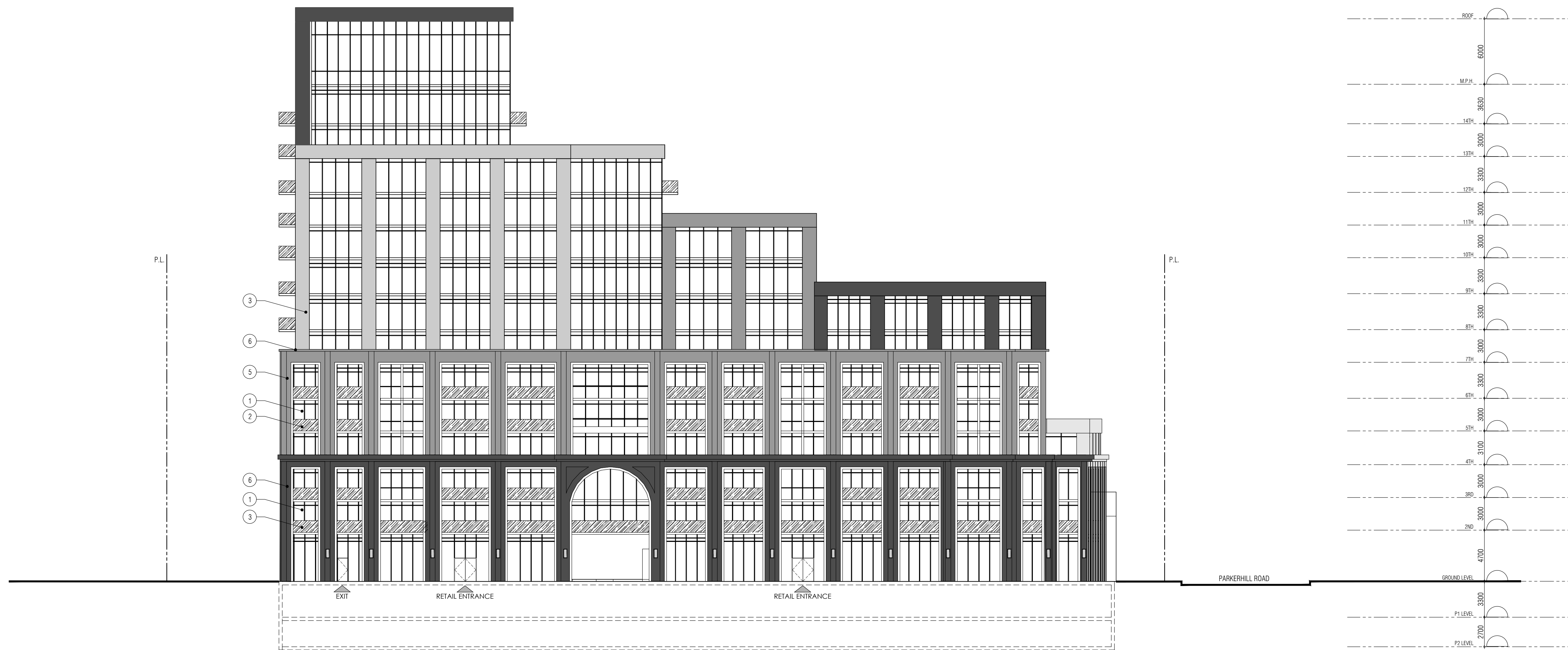
ELECTRONIC INFORMATION IS SUPPLIED TO THE OTHER ASSOCIATED FIRMS TO ASSIST THEM IN THE EXECUTION OF THEIR WORK. REVIEW. THE RECEIVING FIRMS MUST DETERMINE THE COMPLETENESS / APPROPRIATENESS / RELEVANCE OF THE INFORMATION IN RESPECT TO THEIR PARTICULAR RESPONSIBILITY.

GRAZIANI-CORAZZA ARCHITECTS INC. SHALL NOT BE RESPONSIBLE FOR:

1. ERRORS, OMISSIONS, INCOMPLETENESS DUE TO LOSS OF INFORMATION IN WHOLE OR PART WHEN INFORMATION IS TRANSFERRED.
2. TRANSMISSION OF ANY VIRUS OR DAMAGE TO THE RECEIVING ELECTRONIC SYSTEM WHEN INFORMATION IS TRANSFERRED.

1.	MAR.15.2021	ISSUED FOR CONSULTANT COORDINATION	BG
2.	MAR.26.2021	ISSUED FOR ZBA SUBMISSION	BG
3.	JAN.14.2022	ISSUED FOR COORDINATION	BG
4.	JAN.27.2022	ISSUED FOR COORDINATION	BG
5.	FEB.14.2022	ISSUED FOR COORDINATION	BG
6.	MAR.04.2022	ISSUED FOR COORDINATION	BG
7.	MAR.25.2022	ISSUED FOR COORDINATION	BG
8.	MAR.28.2022	ISSUED FOR COORDINATION	BG

MATERIALS LEGEND	
	1 CLEAR VISION GLASS
	2 CLEAR RAILING GLASS
	3 METAL PANEL - DARK GREY
	4 BRICK VENEER - #1
	5 BRICK VENEER - #2
	6 LIMESTONE - WHITE



issued for revisions

	+	+
GRAZIANI CORAZZA ARCHITECTS	+	+
1200 SHAWANON DRIVE, SUITE 100 MISSISSAUGA, ONTARIO L4W 1C3 T.905.795.2844 F.905.795.2844 WWW.GC-ARCHITECTS.COM		

Mixed Use

255 DUNDAS

255 Dundas St. West

Mississauga Ontario

PROJECT ARCHITECT: B.G.

ASSISTANT DESIGNER: R.L.

DRAWN BY: R.L. / J.L.

CHECKED BY:

PLOT DATE: MAR.28.2022

JOB # 1740.19

SOUTH ELEVATION

1:200

A401