

# FGP Area Light

Product Data Sheet

landscape forms



FGP has a pleasing flower-like organic form created by three stems that rise from the connection with the pole. The soft, triangular head holds LEDs in triangular arrays that cast illumination between the verticals in a clean footprint. The area light is ideal for pedestrian spaces such as campuses, parks and plazas, helping to create public spaces that are usable 24 hours a day. LED light sources are energy efficient. Light is finished using Landscape Forms' proprietary PANGARD II powdercoat finish.

### LED Technology

The area light employs solid state LED technology that provides exceptional energy efficiency and very long life. Designed to maximize this potential by merging the thermal properties of LEDs, the FGP area light's cast aluminum heatsink and housing efficiently dissipates heat. FGP uses full spectrum LED light engines that provide outstanding color rendering ability. The thermodynamically integrated diffuser lens reduces glare, improving the visual experience.

### Electrical

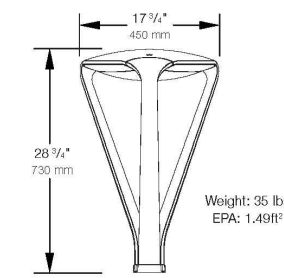
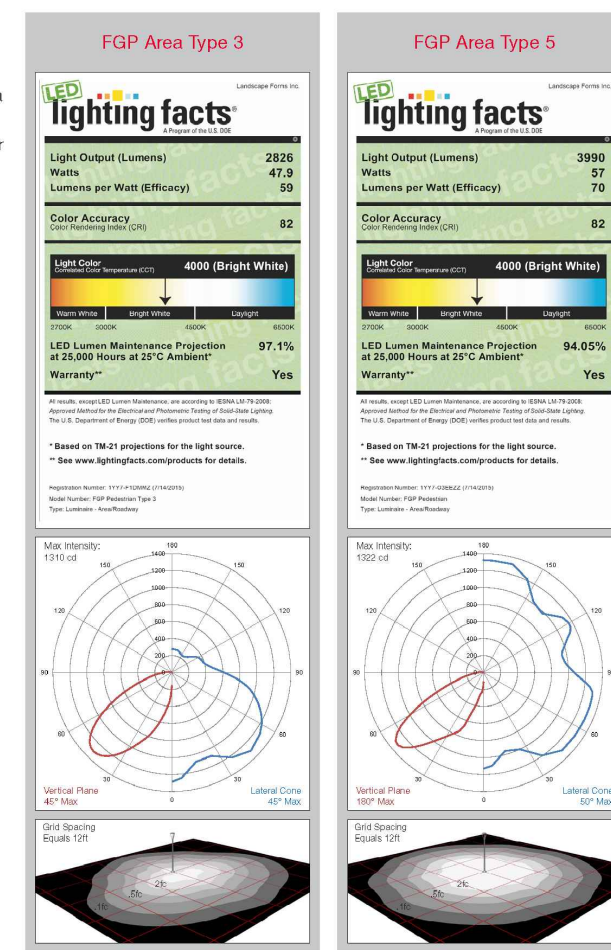
Surge protected 100V-277V 50/60 Hz, Class 2 integrated dimmable driver. LED cartridge with weatherproof quick disconnect provides ease of installation and serviceability. FGP Pedestrian ships prewired.

### FGP Area Type 3

Type 3 Distribution  
 Fixture: Cast Aluminum  
 Lamp: 30 Cree XP-G2 LEDs  
 CCT: 3000K, 3500K, 4000K  
 Drive Current: 450mA  
 Optic: LEDL™ STRAWA  
 Lens: Impact Modified Acrylite®  
 Power Supply: 120V-277V  
 Dimmable: 0-10V  
 BUG Rating: B1 U2 G1  
 IP Rating: IP66

### FGP Area Type 5

Type 5 Distribution  
 Fixture: Cast Aluminum  
 Lamp: 30 Cree XP-G2 LEDs  
 CCT: 3000K, 3500K, 4000K  
 Drive Current: 500mA  
 Optic: LEDL™ STRAWA  
 Lens: Impact Modified Acrylite®  
 Power Supply: 120V-277V  
 Dimmable: 0-10V  
 BUG Rating: B2 U2 G1  
 IP Rating: IP66



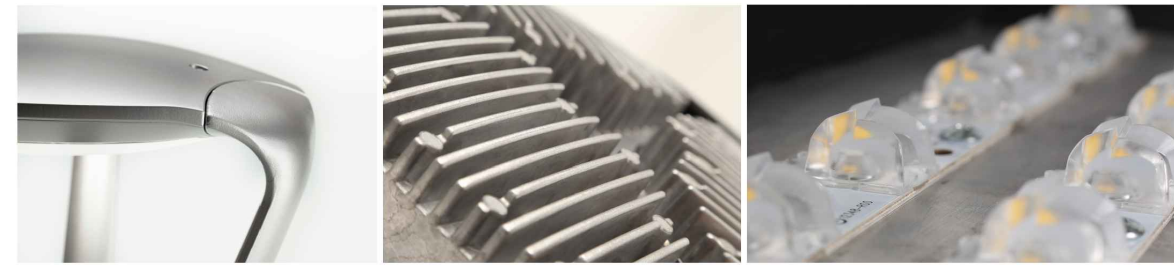
1 Revised June 16, 2020 | Landscape Forms Inc. | 800.521.2546 | F 269.381.3455 | 7800 E. Michigan Ave., Kalamazoo, MI 49048

## DETAIL 'A'

# FGP Area Light

Product Data Sheet

landscape forms



### Finish

PANGARD II® offered exclusively by Landscape Forms, is a 19 step program of cleaning, priming, and powdercoating that resists rusting, chipping, peeling and fading to produce the finest metal finish available for site furniture and outdoor lighting. In addition, PANGARD II® contains no heavy metals and is free of Hazardous Air Pollutants.

### To Order

Specify: Product, Lamp, Drive Current, Color Temperature, Input Voltage, Height, optional 7-pin (ANSI 136.41) Twist Lock receptacle, and Powdercoat Color.

Product	Lamp	Drive Current	Color Temp.	Input Voltage	Height	Twist Lock
AG FGP	500L3 (30 LED Type 3)	046F (460 mA)	40K (4000K)	UV1 (120-277VAC)	12 (144in) 14 (168in) 16 (192in)	NTW (No Twist Lock) TW1 (Twist Lock)
	500L5 (30 LED Type 5)	056F (560 mA)	35K (3500K) 30K (3000K)			

EXAMPLE: AG - 00L3 - 046F - 30K / UV1 - 12 - TW1 - Powdercoat Color

### Product Modifications

Don't see what you are looking for? Our goal is to partner with you as the designer to manufacture solutions needed for the space you are creating. We offer the option to modify our standard product to meet certain design specifications or needs. Contact your local Landscape Forms representative to learn more about these offerings.

### Warranty

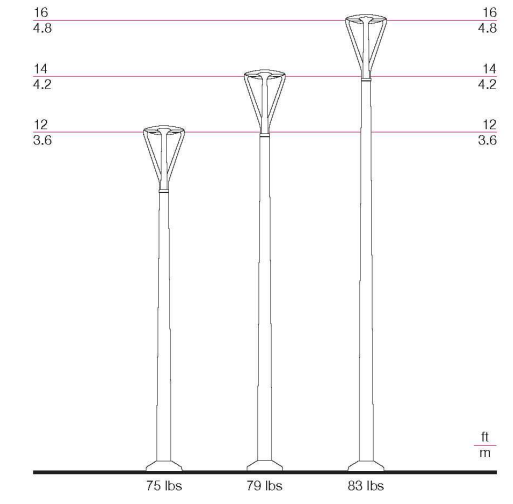
LED lighting products are warranted for six years.

### Other

UL Listed, RoHS Compliant, Next Generation Luminaires Wwmer  
 U.S. Patent D752,268



Designed by Francisco Gomez Paz



Visit our [landscapeforms.com](http://landscapeforms.com) for more information. Specifications are subject to change without notice. Landscape Forms supports the Landscape Architecture Foundation at the Second Century level. ©2019 Landscape Forms, Inc. Printed in U.S.A.

2 Revised June 16, 2020 | Landscape Forms Inc. | 800.521.2546 | F 269.381.3455 | 7800 E. Michigan Ave., Kalamazoo, MI 49048

## DETAIL 'B'

# DELTAUGHT™

Date \_\_\_\_\_

Name \_\_\_\_\_

Client \_\_\_\_\_

Project name \_\_\_\_\_

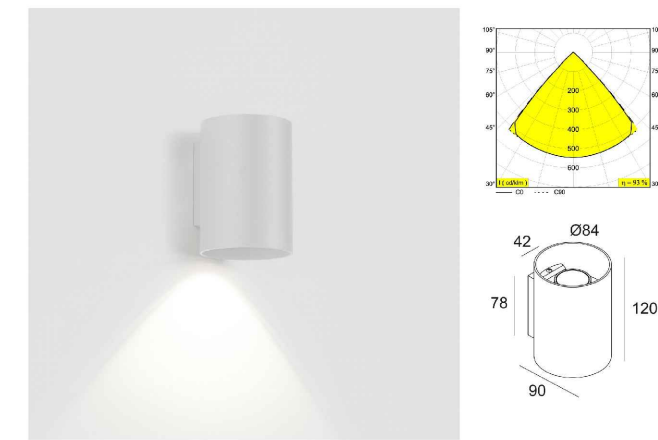
Quote# \_\_\_\_\_

Type/Quantity \_\_\_\_\_

25/03/2021 00:52:32

## Specification Sheet

ULTRAX LED 930  
 279 61 811 930



Available colors:  
 ALL GREY (279 61 811 930 A)  
 WHITE (279 61 811 930 W)  
 DARK GREY (279 61 811 930 N)

1 x LED 7.7W / CRN-90 / 3000K / 812lm  
 INCL LED  
 INCL LED POWER SUPPLY 350mA DC  
 CRN-CR or KELVIN on request

LED Technique Light source: 812 lm @ 7 W @ 115 lm/W  
 Luminaire: 758 lm @ 8 W @ 93 lm/W

100-240V / 50-60Hz

Class: II

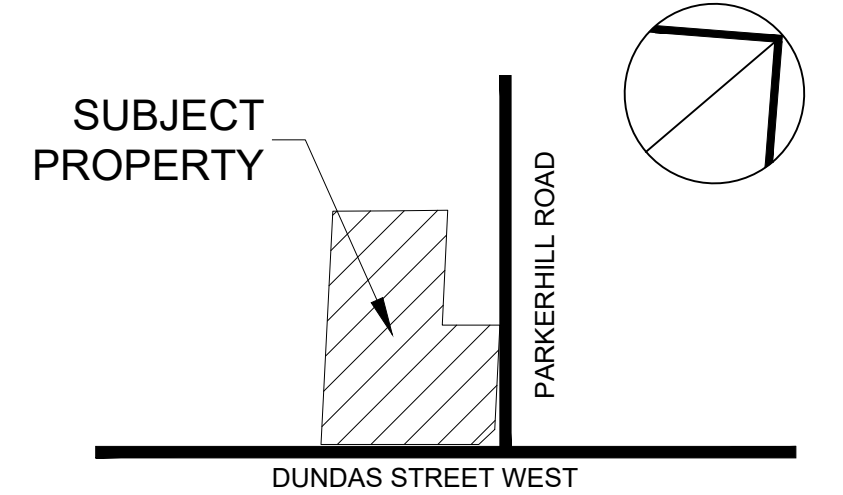
Weight: 0.6 KG

Protection level: IP65

Minimum distance: n.a.

For detailed installation instructions, please consult the manual [www.lf.com/ultrax-led](http://www.lf.com/ultrax-led)

## DETAIL 'C'



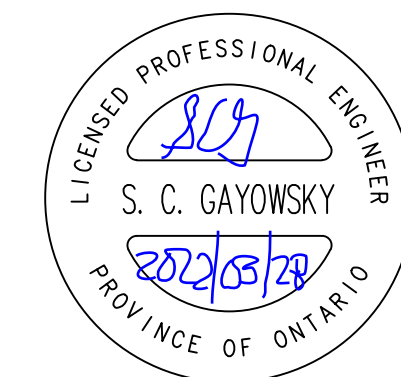
### KEY PLAN

N.T.S.

### LEGEND

- ⊙ A SITE LIGHT POLE: AS PER LANDSCAPE DESIGN, REFER TO DETAILS A AND B ON E102, FGP AREA LIGHT BY LANDSCAPE FORMS (73W, TYPE V, 3000k, 16' MOUNTING HEIGHT) MODEL FGP-500L5-05GF-30K-UV1-16-TW1
- C WALL MOUNTED LIGHT (BY BUILDING ELECTRICAL) 7W LED WALL MOUNTED LUMINAIRE BY DELTAUGHT, MOUNTED AT 3.05m

REV. NO.	REVISION	REV. BY	DATE
R1	REVISED PER LATEST SITE PLAN	S.C.G.	2022.03.28



RTG Systems Inc.  
 ELECTRICAL CONSULTING ENGINEERS  
 3518 Midway Dr., Suite 201 Office: (905) 335-4470  
 Burlington ON L7M 1A8 Toronto: (905) 827-7887  
 E-MAIL: general@rtgsystems.com 05186-00

### 255 DUNDAS STREET WEST DETAIL SHEET

SCALE 1:200 0 10 20 30 40 50 METRES

DES. TECH	DRAWN	WORK ORDER	DATE
S.C.G.	S.C.G.		MAR 31, 2021
REVIEWED BY	AREA	SHEET	
S.C.G.	MISS.	3 of 3	E102

ALL SITE LIGHTING IS TO BE SHIELDED IN CONFORMITY WITH THE SITE PLAN AND TO THE SATISFACTION OF THE CITY OF MISSISSAUGA.