



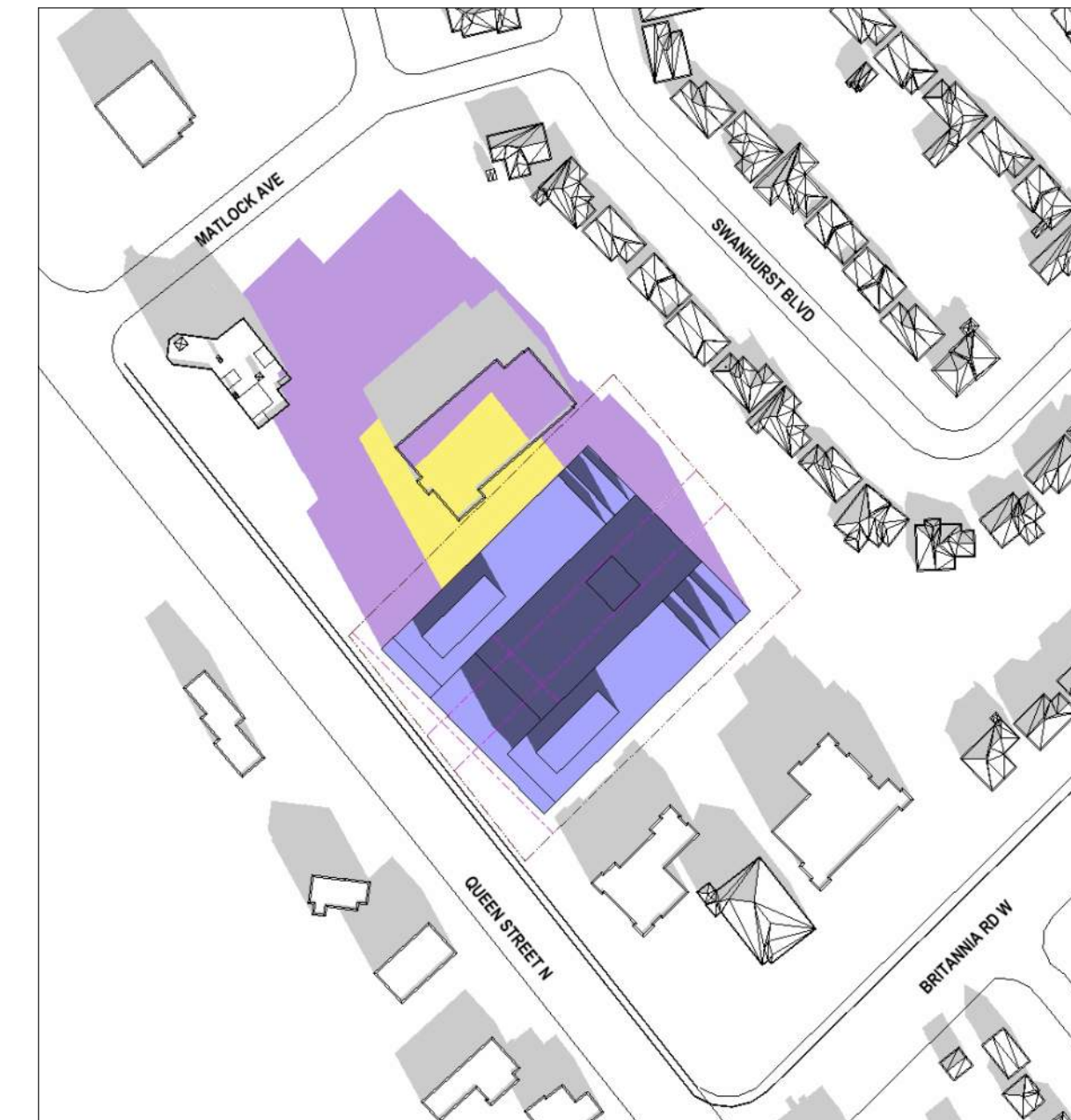
DECEMBER 21
7:49 AM



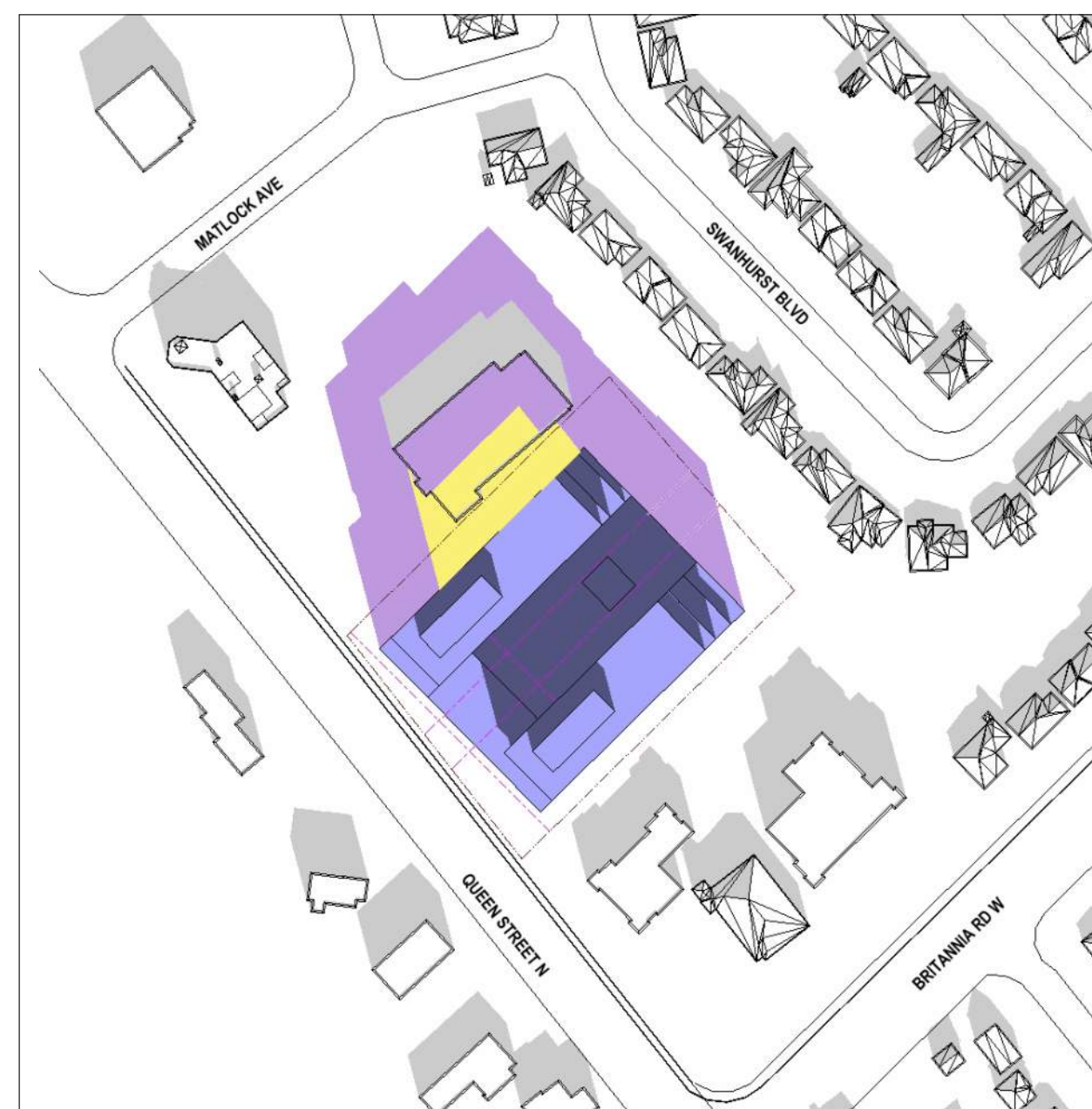
DECEMBER 21
9:19 AM



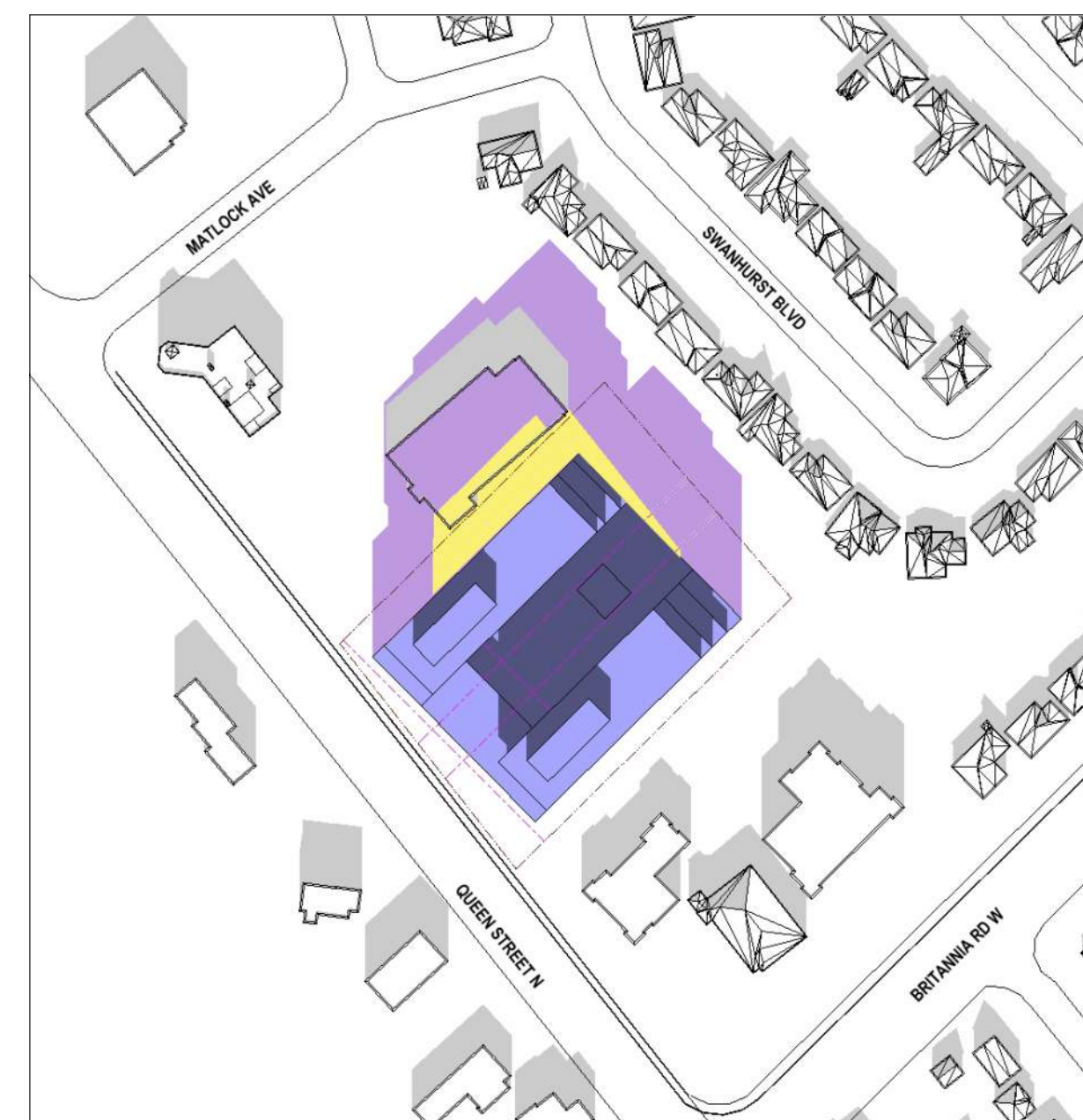
DECEMBER 21
10:17 AM



DECEMBER 21
11:17 AM



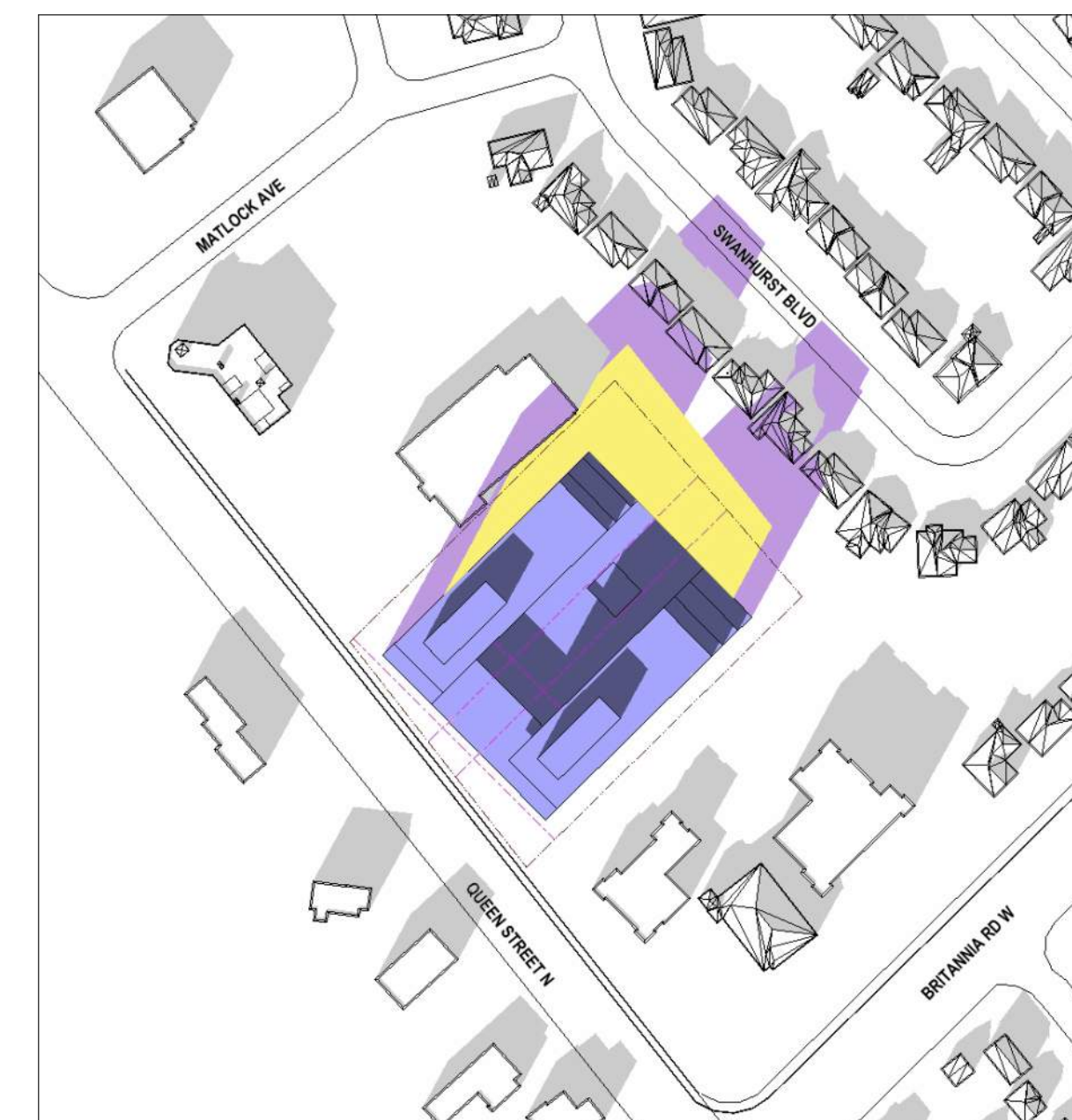
DECEMBER 21
12:17 PM



DECEMBER 21
13:17 PM



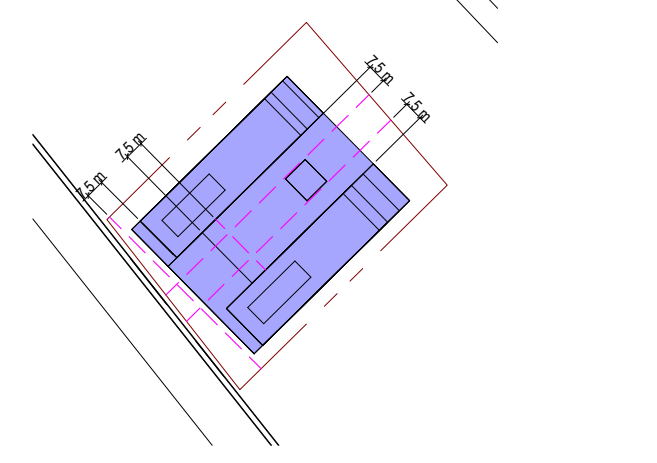
DECEMBER 21
14:17 PM



DECEMBER 21
15:15 PM

0 1 2 5m

- PROPOSED BUILDING
- PROPOSED BUILDING SHADOW
- PROPOSED BUILDING SHADOW (WITHIN THE PROPERTY)
- AS OF RIGHT SHADOW
- EXISTING BUILDING SHADOW
- PROPERTY LINE
- THE LINE OF IMPACT ASSESSMENT (REFER TO 3.1 CRITERIA)



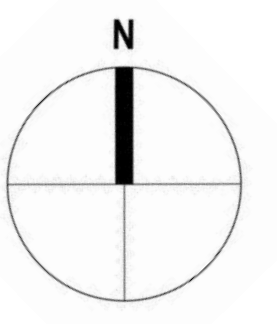
1 2022-01-07 ISSUED FOR OPA & ZBA COORDINATION
 ALL DRAWINGS, SPECIFICATIONS AND RELATED DOCUMENTS ARE THE COPYRIGHT PROPERTY OF THE ARCHITECT AND MUST BE RETURNED UPON REQUEST. REPRODUCTION OF DRAWINGS, SPECIFICATIONS AND RELATED DOCUMENTS IN PART OR WHOLE IS FORBIDDEN WITHOUT THE ARCHITECT'S WRITTEN PERMISSION. THE CONTRACTOR IS RESPONSIBLE FOR CHECKING AND VERIFYING ALL LEVELS AND DIMENSIONS AND SHALL REPORT ALL DISCREPANCIES TO THE ARCHITECT AND OBTAIN CLARIFICATION PRIOR TO COMMENCING WORK. DO NOT SCALE DIMENSIONS FROM THE DRAWINGS.


A&Architects
A & Architects Inc.
 130 Queens Quay East, Suite 1018
 Toronto, Ontario, M5A 0P6
 T: (416) 466-0100 W: www.aarchitects.ca

CLIENT:

LAMB DEVELOPMENT CORP

PROJECT:
THE MISS QUEEN
 21-51 QUEEN ST. N, MISSISSAUGA, ONTARIO





SCALE: 1-200 DATE: DECEMBER 2020

TITLE:
SHADOW STUDY-DECEMBER 21

PROJECT NO:
 20-121 **A-706**