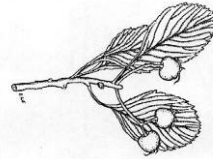


Arborist Report for 1407 Lakeshore Road East

Toronto, Ontario



DAWhiteTreeCare.com

Tel: 416 431 2453, E-mail: DAWhiteTreeCare@GMail.com

D. Andrew White M. Sc. ISA Certified Arborist ON-0734. 78 Marcella St. Toronto, ON, M1G 1L2.

1. Introduction

The following is an arborist report for the property at 1407 Lakeshore Road East Drive, in Toronto Ontario. The purpose of this report was to ascertain the potential impacts of the proposed construction of a new development on the trees on the site and on adjacent properties.

2. Methods

An on-site inspection was made on March 3, 2022. The sizes of individual trees were measured as diameter at breast height (DBH), breast height being 137 cm from ground level. The locations of these trees are indicated on the modified site plan (Fig. 1). From the data collected plant Condition Rating (CR), Location Rating (LR), Species Rating (SR), and minimum Tree Protection Zones (TPZ), were estimated.^{1,2}

It is necessary to protect all trees designated for preservation during both demolition and construction. This tree protection can be accomplished by protecting the said trees with *tree protection barriers*.

Tree barriers for road allowance areas would be composed of a 1.2 metres (4 ft.) high orange plastic web snow fencing secured on 2"x4" wood frames. Usually, tree protection barriers, not on road allowance, are to be 1.2 metres (4 ft.) high, and composed of solid hoarding plywood (refer to Mississauga tree protection barrier detail)

3. Discussion

There are plans to develop the site at 1407 Lakeshore Road East several non-exempt trees would need to be injured or removed, in order to allow for the proposed development (Table 1, Fig. 1).

Private Trees:

There are (7) seven trees on the subject site which are to be removed (Trees #1-7).

Trees to be REMOVED:	(7) Seven
Trees:	#1 – Balsam Poplar Clump (2-5 cm DBH) #2 – White Mulberry (2-8 cm DBH) #3 – Silver Maple (52 cm DBH) #4 – Manitoba Maple (1-2 cm DBH) #5 – Manitoba Maple (8-12 cm DBH) #6 – Manitoba Maple (10-16 cm DBH) #7 – Manitoba Maple (8-9 cm DBH)
Notes:	Trees conflict with the proposed street works, including underground parking structure, drive-aisle and transformer

4. Replacement Trees:

MSLA Landscape Architects has developed a landscape plan for the 1407 Lakeshore Road East property (*L2-01 – MSLA Landscape Plan*).

The City of Mississauga tree replacement requirements are as follows:

- If you remove a healthy tree with a diameter that is 49 cm or less, one replacement tree is required.
- If you remove a healthy tree with a diameter of 50 cm or greater, two replacement trees are required.
- Replacement trees must be at least 1.8 m tall if coniferous or at least 6 cm in diameter if deciduous

Tree locations would be such as not to interfere with underground or overhead utility lines. The trees are to be planted after the construction and landscaping work on the site have been completed. The trees would best be transplanted during the spring or autumn. Mid-summer transplanting should be avoided. These trees are to be maintained in good condition. Supplemental watering may be required during the drier periods of the year, especially during the first two or three years after their transplantation.

5. Conclusions

In order to allow for the alterations to the property at 1407 Lakeshore Road East seven trees will require removal. One of these trees is greater than 50 cm DBH, while the remaining six are less than 20cm DBH.

- (1) One private trees, greater than 50cm DBH, will require REMOVAL
- (6) Six private trees, less than 20cm DBH, will require REMOVAL

MSLA Landscape Architects has developed a landscape plan for the 1407 Lakeshore Road East property.

D. Andrew White M. Sc.

A handwritten signature in blue ink that reads "D. Andrew White". The signature is written in a cursive style with a large initial "D" and a stylized "White".

March 4, 2022

Table #1. Tree number (No.), species, diameter at breast height (DBH), Condition Rating (CR) Tree Category (TC) and comments.

No.	Tree Species	DBH (cm)	CR (%)	TC	Comments	Recommendations
#1+	Balsam Poplars, 8	2-5	70-75	Private	Small naturalised trees inside construction fence, it good condition TPZ: 1.2 m	To be <u>REMOVED</u> ; conflict with proposed sidewalk and driveway access
#2	White Mulberry	2-8	65	Private	Tree near fence-line, in fair condition with multiple stems TPZ: 1.2	To be <u>REMOVED</u> ; conflict with proposed U/G parking structure
#3	Silver Maple	52 circa	62.5	Private	Tree behind plywood hoarding, low-fair condition with very high crown base at 6 m from ground TPZ: 3.6 m	To be <u>REMOVED</u> ; conflict with proposed U/G parking structure and transformer
#4	Manitoba Maple	1-2	65	Private	Naturalised tree near fence-line, with multiple stems TPZ: 1.2 m	To be <u>REMOVED</u> ; conflict with proposed U/G parking structure
#5	Manitoba Maple	8-12	65	Private	Naturalised tree near fence-line, with multiple stems TPZ: 1.8 m	To be <u>REMOVED</u> ; conflict with proposed U/G parking structure
#6	Manitoba Maple	10-16	70	Private	Naturalised tree near fence-line, with multiple stems TPZ: 1.8 m	To be <u>REMOVED</u> ; conflict with proposed U/G parking structure
#7	Manitoba Maple	8-9	65	Private	Naturalised tree near fence-line, with multiple stems TPZ: 1.2 m	To be <u>REMOVED</u> ; conflict with proposed U/G parking structure

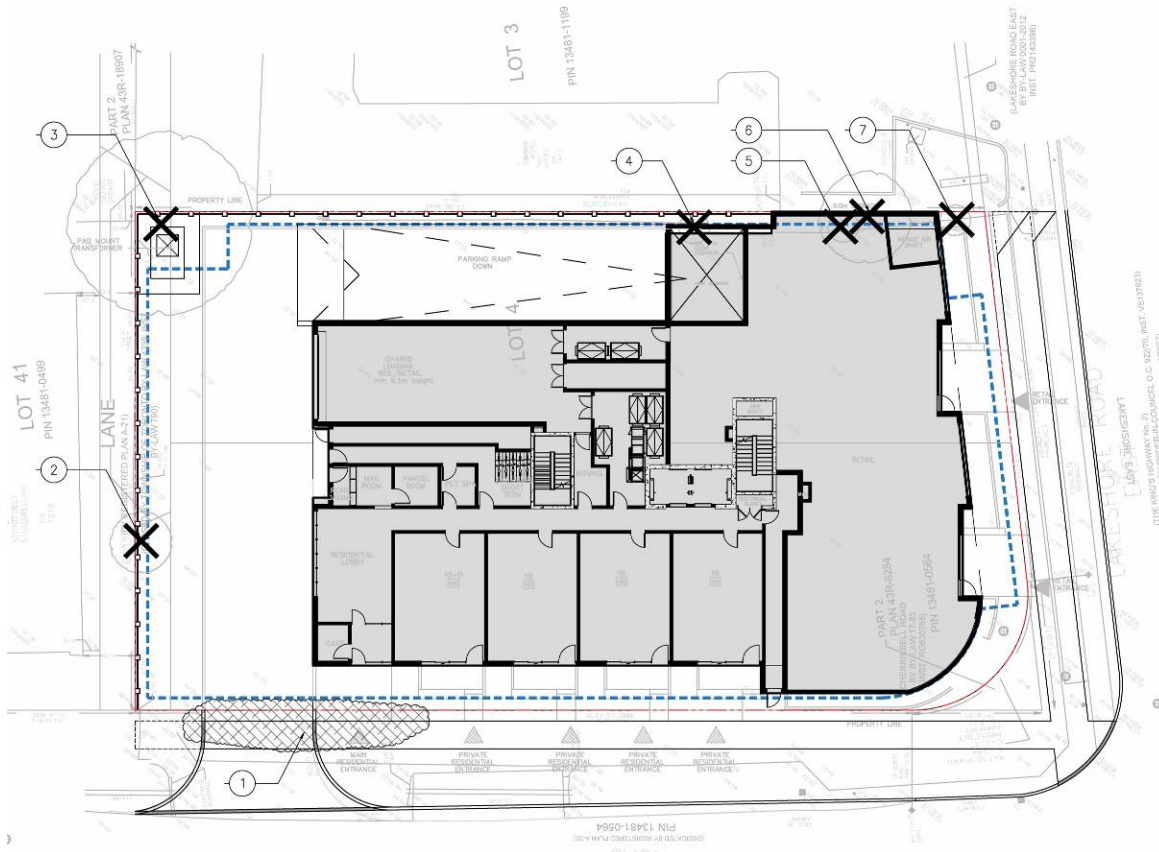


Figure #1: Tree locations on the 1407 Lakeshore Road East development site.
 (Refer to *Tree Preservation Plan L1-01* by MSLA for enlargement)

6. References

1- Council of Tree Landscape Appraisers. 2019. Guide for Plant Appraisal. 10th Edition. International Society of Arboriculture.

2- International Society of Arboriculture of Ontario. 2022. Ontario Supplement to Guide for Plant Appraisal 10th Edition. Ontario Chapter, International Society of Arboriculture.

3- City of Mississauga. 2001. THE TREE PERMIT BY-LAW NUMBER 474-05. Corporation of the City of Mississauga, ON.

4- City of Mississauga. 2020. Application to Permit the Injury or Destruction of Trees on Private Property. City of Mississauga Community Services Department.