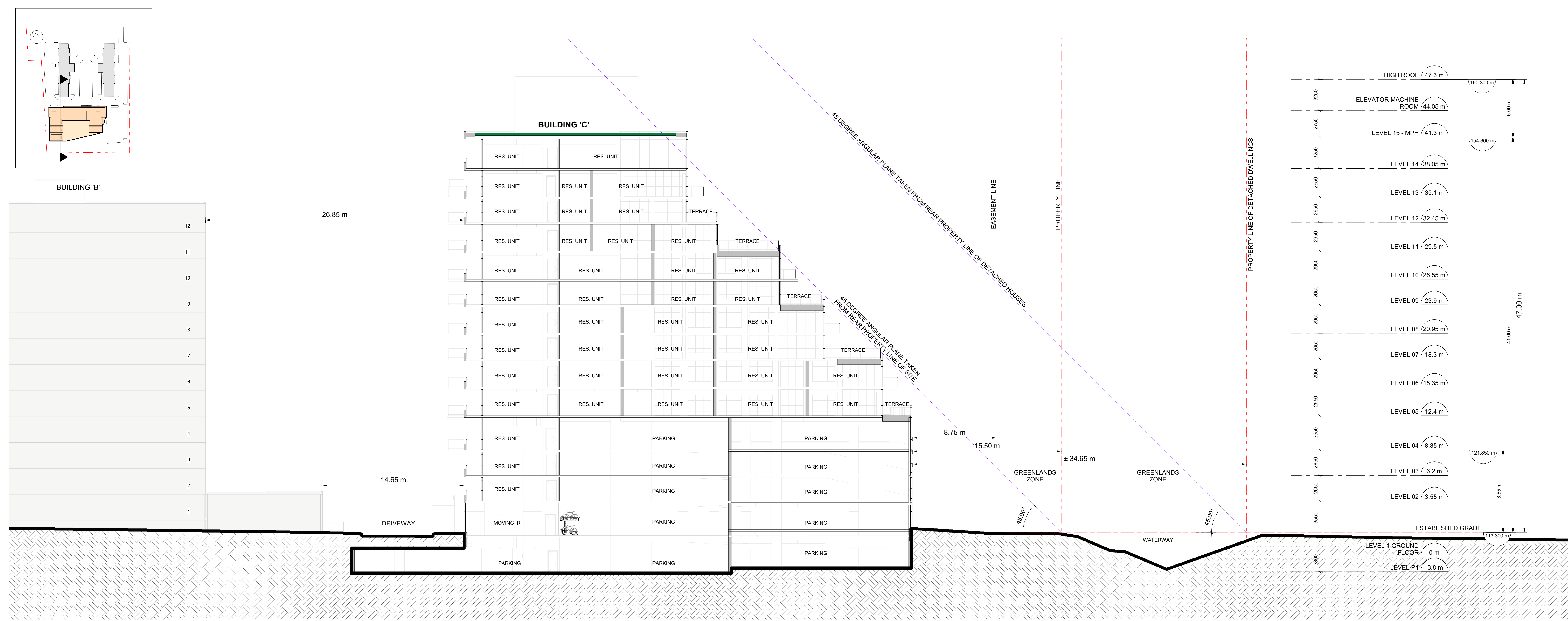
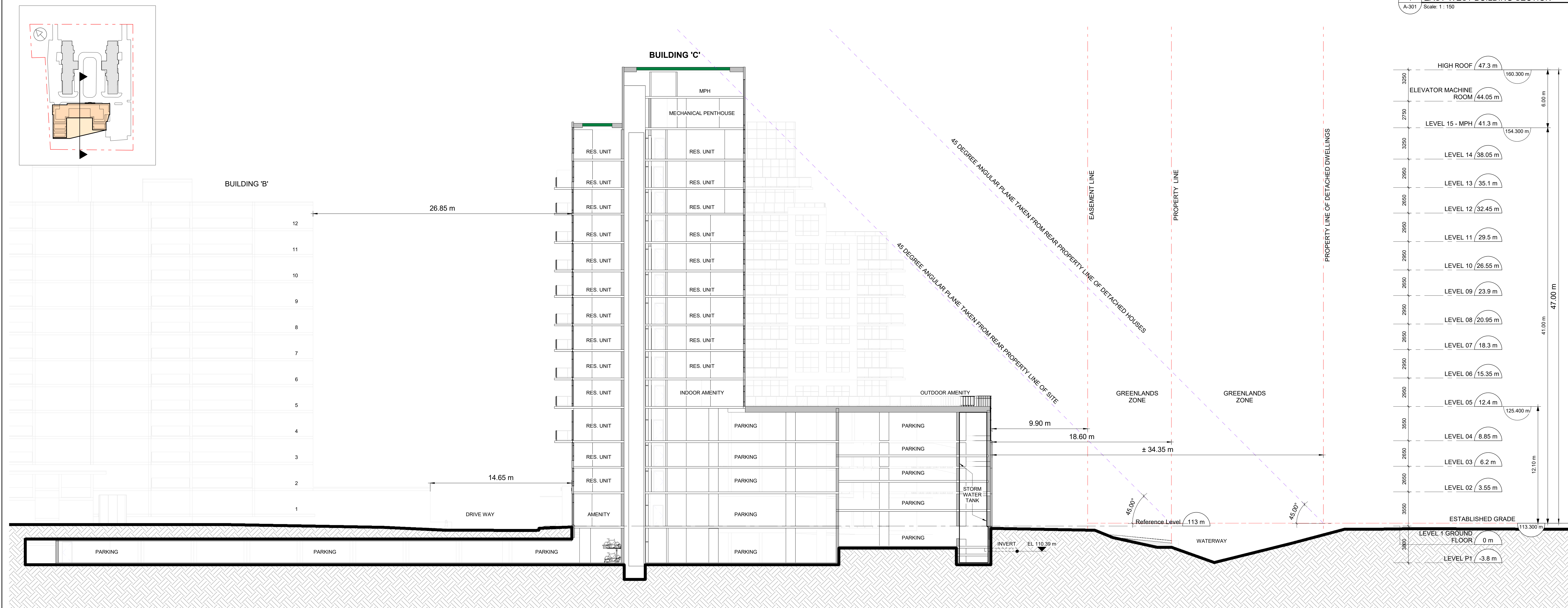


ISSUES

No.	DESCRIPTION	DATE
1	ISSUED FOR RE-ZONING/OPA	2020-08-31
2	ISSUED FOR RE-ZONING/OPA	2022-04-08



1 EAST-WEST BUILDING SECTION
 A-301 Scale: 1:150



2 EAST-WEST BUILDING SECTION THROUGH CENTRE COURT
 A-301 Scale: 1:150

SEAL