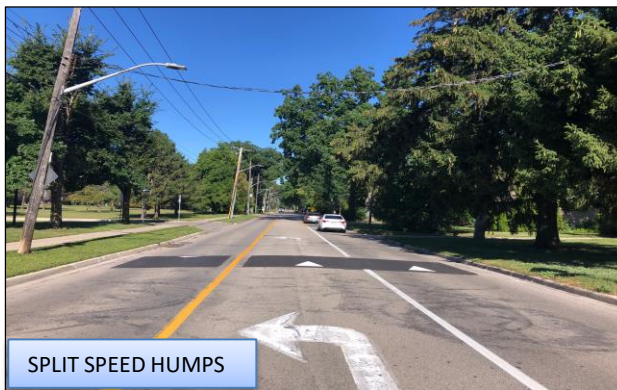
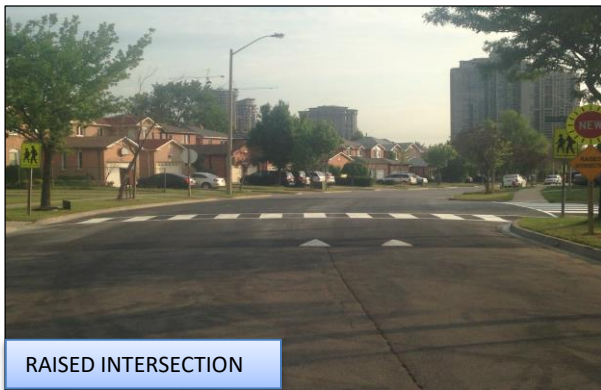
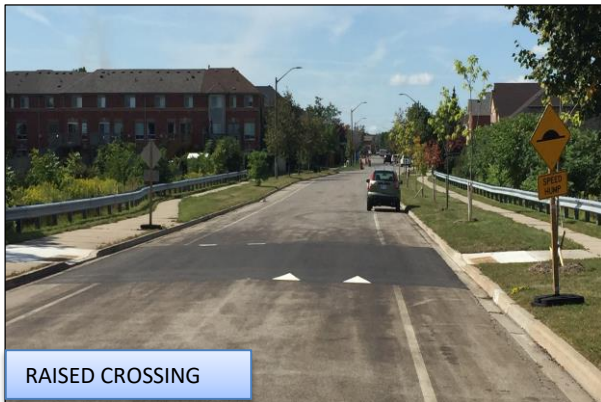
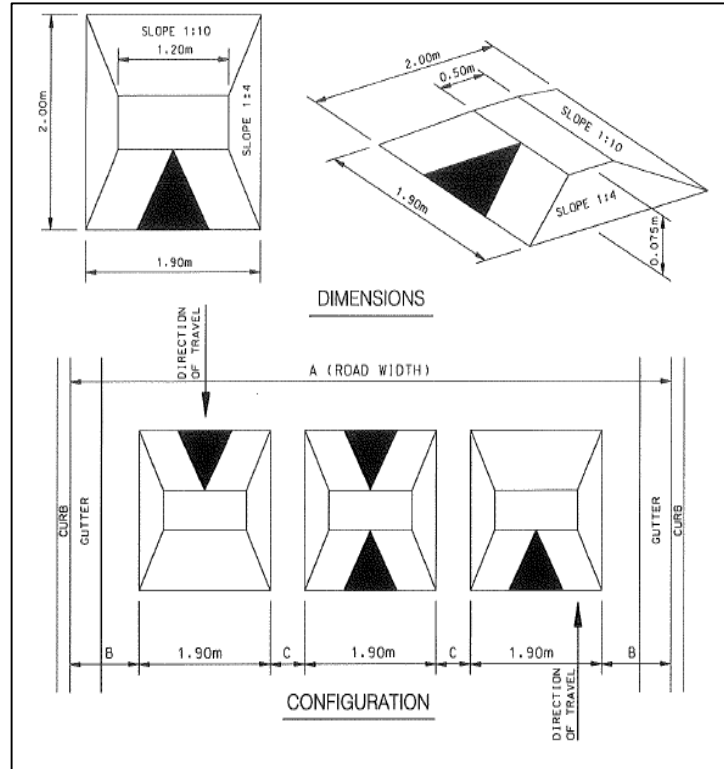


# TRAFFIC CALMING DEVICES

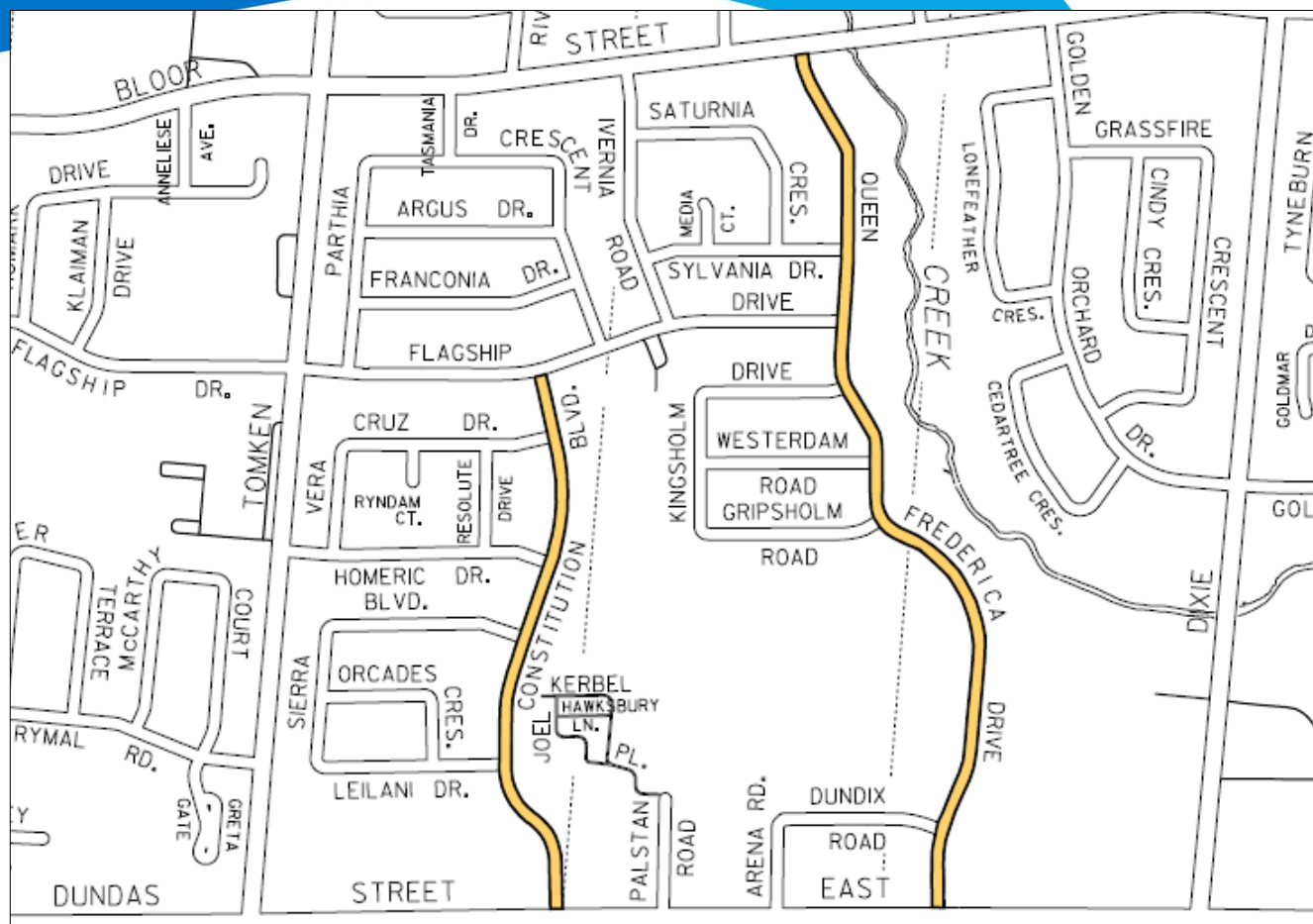


## SPEED CUSHION DESIGN



- Raised area on a roadway that does not cover the entire width of the road
- Designed to accommodate wide wheel base of emergency vehicles (easy passage)
- Designed to discourage drivers from travelling at excessive speeds
- A series of speed cushions is more effective than a single installation
- Use on neighbourhood roads

## Constitution Boulevard And Queen Frederica Drive



# Constitution Boulevard

## Option A

- 3 traffic calming devices and 1 raised crossing

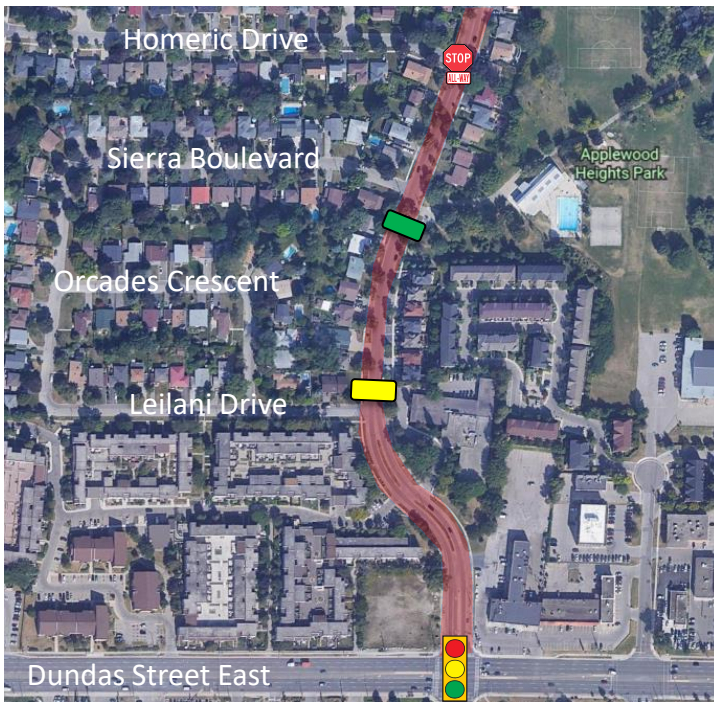
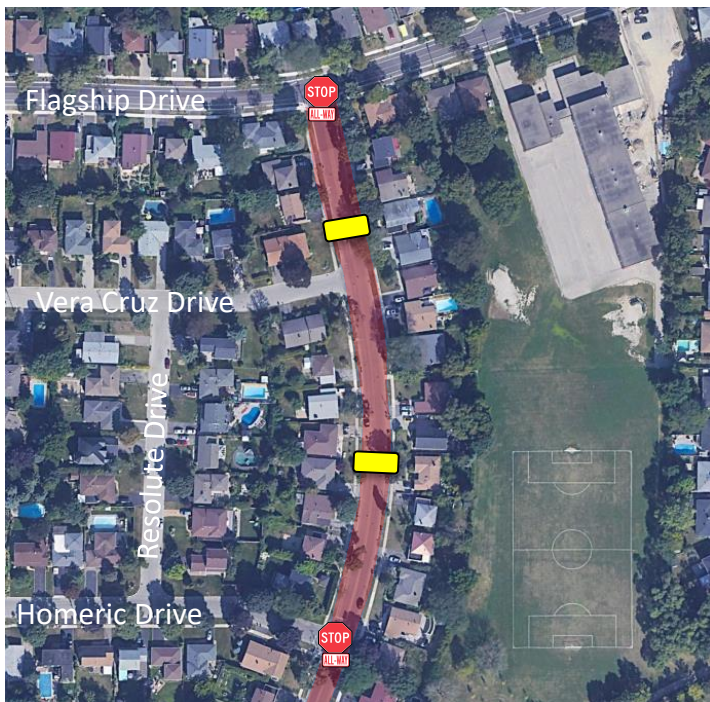
## Option B

- 2 traffic calming devices and 1 raised crossing



# Constitution Boulevard Between Flagship Drive and Dundas Street East

## Option A – 3 Traffic Calming Devices and 1 Raised Crossing



Traffic Signal



Existing All-Way  
Stop Locations



Proposed  
Raised Crossing



Proposed Speed  
Cushions



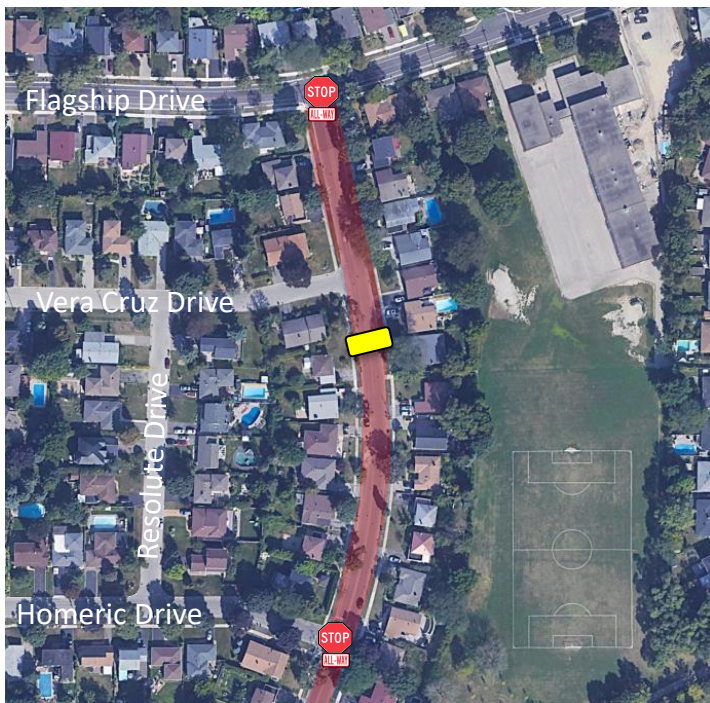
Project Area

**Note:** Parking may be prohibited in the immediate vicinity of the raised crossing



# Constitution Boulevard Between Flagship Drive and Dundas Street East

## Option B – 2 Traffic Calming Devices and 1 Raised Crossing



Traffic Signal



Existing All-Way  
Stop Locations



Proposed  
Raised Crossing



Proposed Speed  
Cushions



Project Area

**Note:** Parking may be prohibited in the immediate vicinity of the raised crossing

# Queen Frederica Drive

Between Bloor Street and  
Flagship Drive



Existing Stop Location



Existing All-Way Stop Locations



Proposed Speed Cushions



Project Area





## Queen Frederica Drive

Between Flagship Drive and  
Gripsholm Road



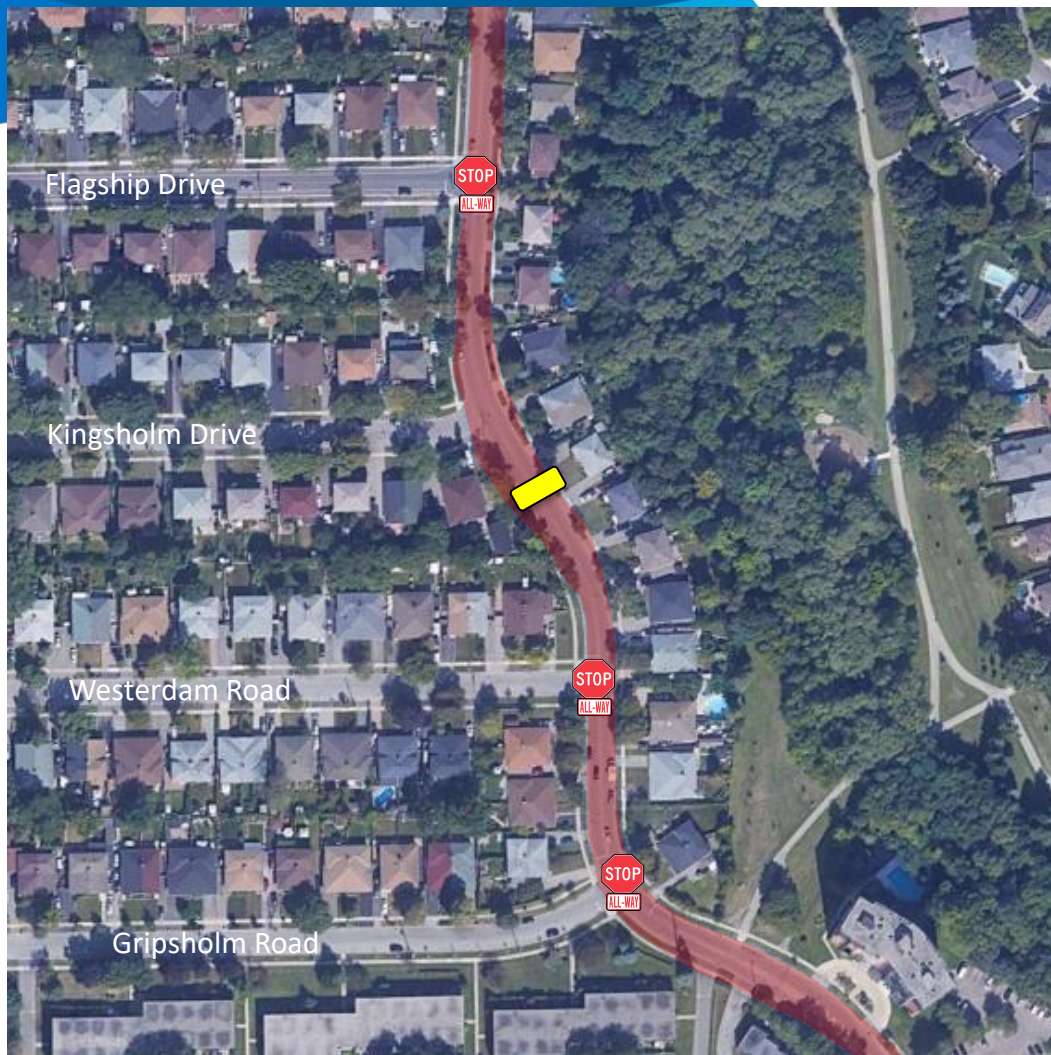
Existing All-Way Stop Locations



Proposed Speed Cushion



Project Area





# Queen Frederica Drive

Between Gripsholm Road and  
Dundas Street East



Traffic Signal



Existing All-Way Stop Locations



Proposed Speed Cushions



Project Area

