

Gullden Park Redevelopment Information Session

Park Redevelopment Update

Hosted by: Parks Forestry & Environment



Land Acknowledgement

Meeting Agenda

6:30 – House-Keeping Presentation

6:35 - Opening Remarks: Councillor Fonseca

6:45 - Presentation on Design Concepts

7:15 - Q&A Session

7:45 - Closing Remarks: Councillor Fonseca and Park Planning

Tips for Virtual Engagement



Type in the Chat
Box to Everyone



Click 'Raise Hand'
to Speak to
Everyone

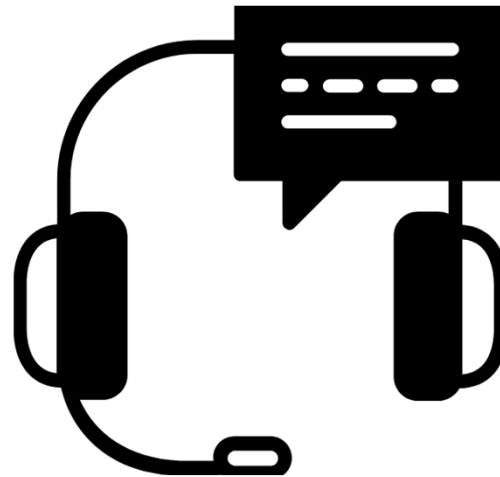


No Computer?
Press *3 to Raise
Your Hand or *6 to
Unmute on Your
Phone



Close Captioning
at the bottom right
of your device.

**Today's presentation is being
recorded.**



**For technical assistance please message in
the chat or call 905- 615-3200 x 5368**

Who is in the Room?



Opening Remarks: Councillor Fonseca

Previous Engagement

- March 10th- April 19th 2021: Public Survey
 - 23,300 surveys mailed to all Ward 3 residents
 - 588 surveys completed
- October 19th 2021: Virtual Public Meeting
 - Presented survey results
 - Engagement summary posted
- June 15th 2022: Virtual Public Meeting
 - Design concepts informed through survey and public meeting

Project Goals

- Redevelop Gulleden Park as a vibrant, environmentally responsible, all seasons, flexible, multi-generational, community park
- Provide a variety of active and passive recreational uses, new and updated amenities, and communal outdoor spaces for gathering, exercise, recreation and leisure, to serve the local community.

Project Status

- Consultant Procurement Complete - contract awarded to Landscape Planning Limited
 - Design
 - Permits and Approvals
 - Construction tender documents
 - Construction administration
- Detailed background studies underway
- Concept design underway - 3 Options
- Construction currently scheduled to start summer 2023, following the completion of BCC renovations.

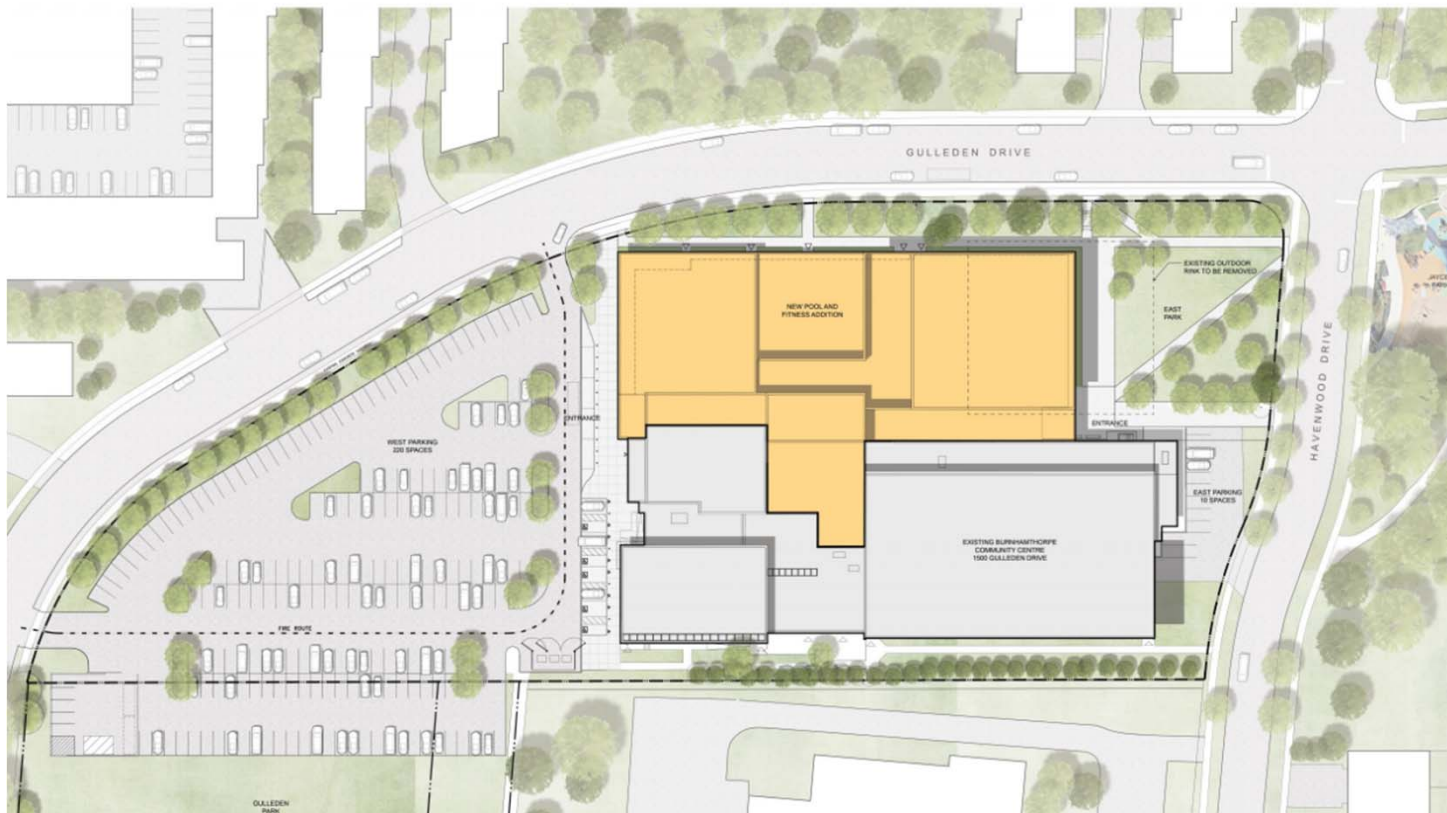
Site Context



Existing Site Conditions



Burnhamthorpe Community Centre



<https://www.mississauga.ca/projects-and-strategies/city-projects/burnhamthorpe-community-centre-renovation/>

Park Program and Development Components

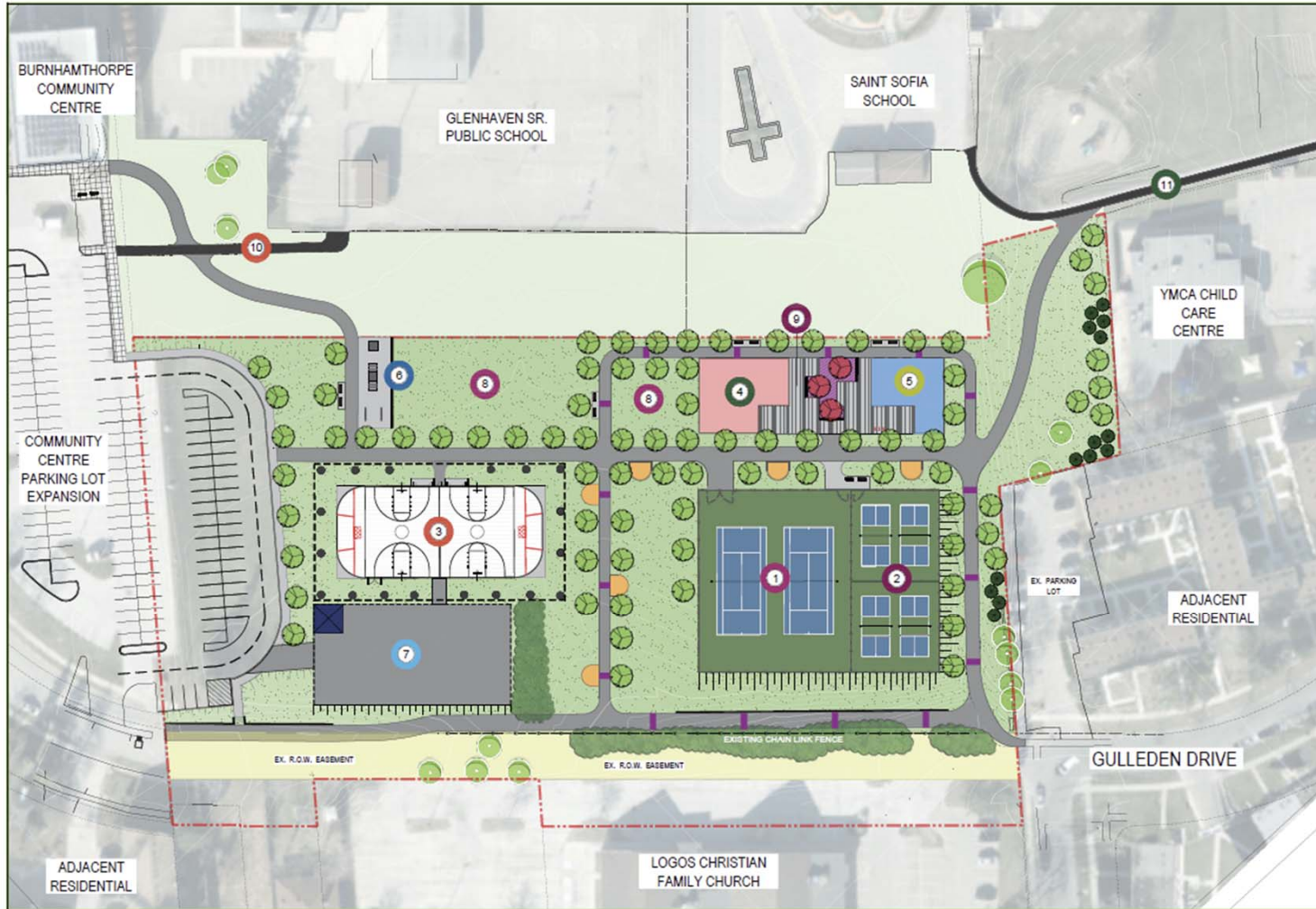
- Outdoor refrigerated ice facility (rink or potential skating trail)
- Spray Pad
- Playground
- Tennis courts
- Pickleball
- Outdoor fitness
- Multi-use court (basketball)
- Open sod area
- Beginner street style skateboard features
- Shade (Canopy Trees, Umbrella Table, Shade Sails)
- A fenced in Parks Operations Maintenance Compound and Storage Bunker
- Trails and Walking Loop
- Seating areas
- Improved access and accessibility

Design Objectives

- Provide a variety of park spaces and experiences
- Increase access and accessibility
- Provide connections and seamless integration to the Burnhamthorpe Community Centre
- Provide seamless and functional transitions to adjacent school lands
- Allow for future Gulleden Drive ROW extension
- Prioritize safety, durability, effective operations and minimize maintenance
- Conform to legislated requirements

Proposed Design Concepts

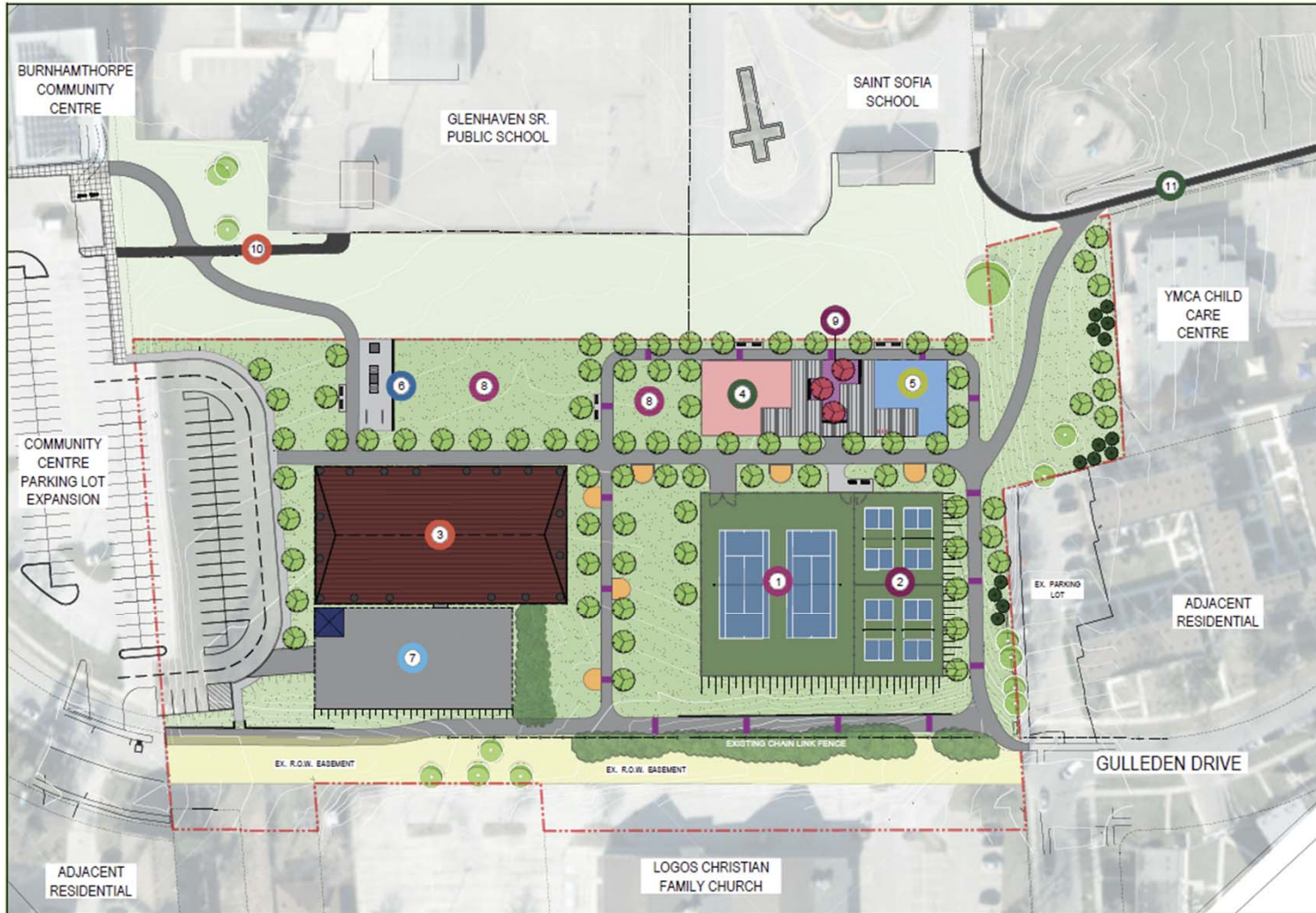
Concept 1



LEGEND	
	PROPERTY LINE
	EXISTING TREE
	PROPOSED TREES
	CONCRETE PAVING
	ASPHALT PAVING
	UNIT PAVING ON CONCRETE BASE
	FITNESS AREA
	BENCHES
	WASTE RECEPTACLES
	BIKE RACKS
	GATHERING TABLES WITH SHADE UMBRELLAS
	PLANT BED
	STEEP SLOPES
	MAINTENANCE BUILDING
	FITNESS DISTANCE MARKINGS ON TRAIL

KEYS	
	TENNIS COURTS (2 TOTAL)
	PICKLEBALL COURTS (4 TOTAL)
	COVERED STRUCTURE OVER REFRIGERATED ICE HOCKEY RINK (45M X 20M) WITH MULT-USE PURPOSE COURT
	PLAYGROUND
	SPRAY PAD
	JUNIOR SKATEBOARD FEATURES
	FENCED IN PARKS OPERATIONS MAINTENANCE COMPOUND, STORAGE BUNKER, ICE FACILITY OPERATIONS EQUIPMENT
	PASSIVE OPEN LAWN
	SEATING AREA / PLAZA
	EXISTING PATHWAY TO REMAIN

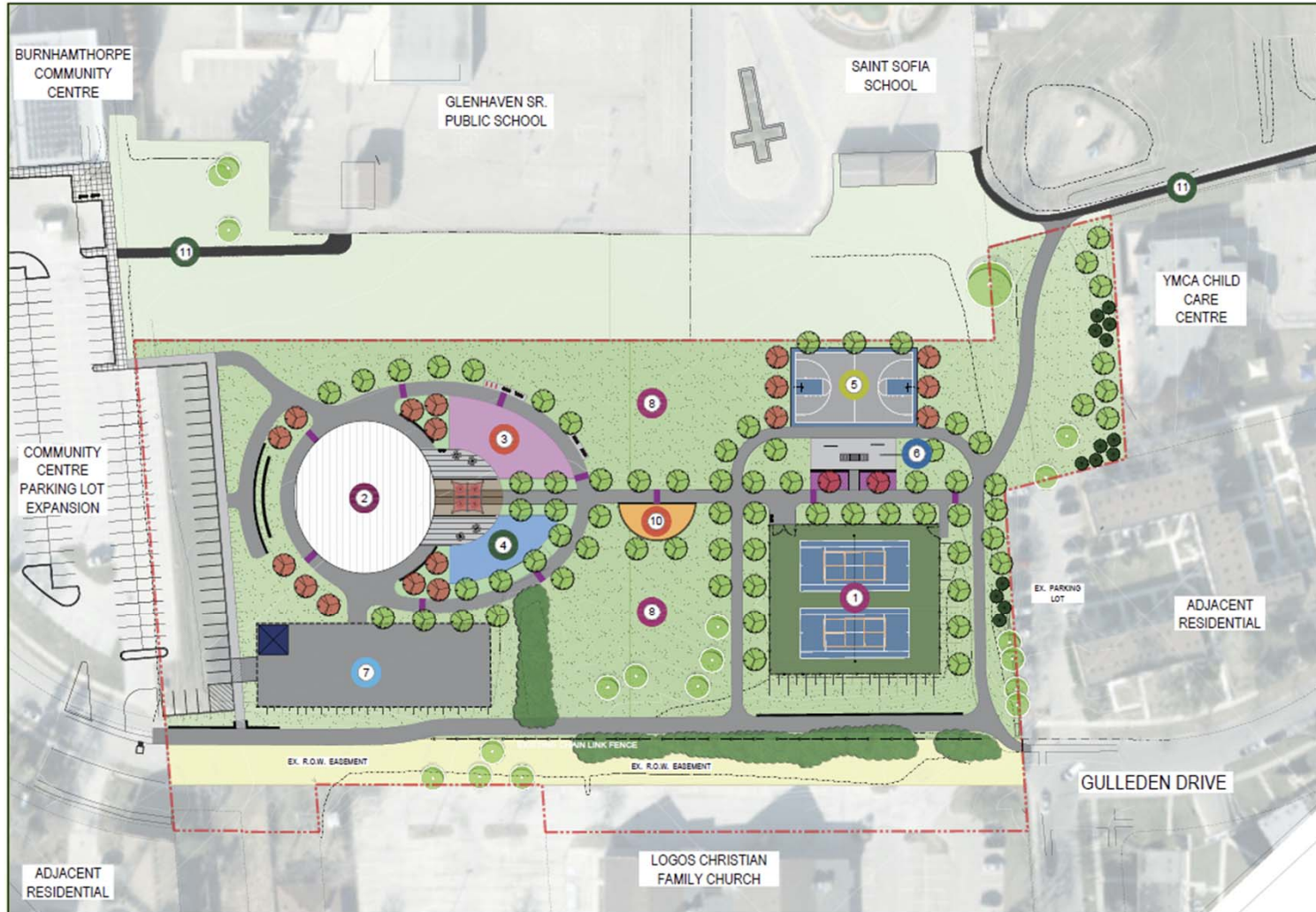
Concept 1



LEGEND	
	PROPERTY LINE
	EXISTING TREE
	PROPOSED TREES
	CONCRETE PAVING
	ASPHALT PAVING
	UNIT PAVING ON CONCRETE BASE
	FITNESS AREA
	BENCHES
	WASTE RECEPTACLES
	BIKE RACKS
	GATHERING TABLES WITH SHADE UMBRELLAS
	PLANT BED
	STEEP SLOPES
	MAINTENANCE BUILDING
	FITNESS DISTANCE MARKINGS ON TRAIL

KEYS	
	TENNIS COURTS (2 TOTAL)
	PICKLEBALL COURTS (4 TOTAL)
	COVERED STRUCTURE OVER REFRIGERATED ICE HOCKEY RINK (45m X 20m) WITH MULTI-USE PURPOSE COURT BELOW
	PLAYGROUND
	SPRAY PAD
	JUNIOR SKATEBOARD FEATURES
	FENCED IN PARKS OPERATIONS MAINTENANCE EQUIPMENT, STORAGE BUNKER, ICE FACILITY OPERATIONS EQUIPMENT
	PASSIVE OPEN LAWN
	SEATING AREA / PLAZA
	EXISTING PATHWAY TO REMAIN

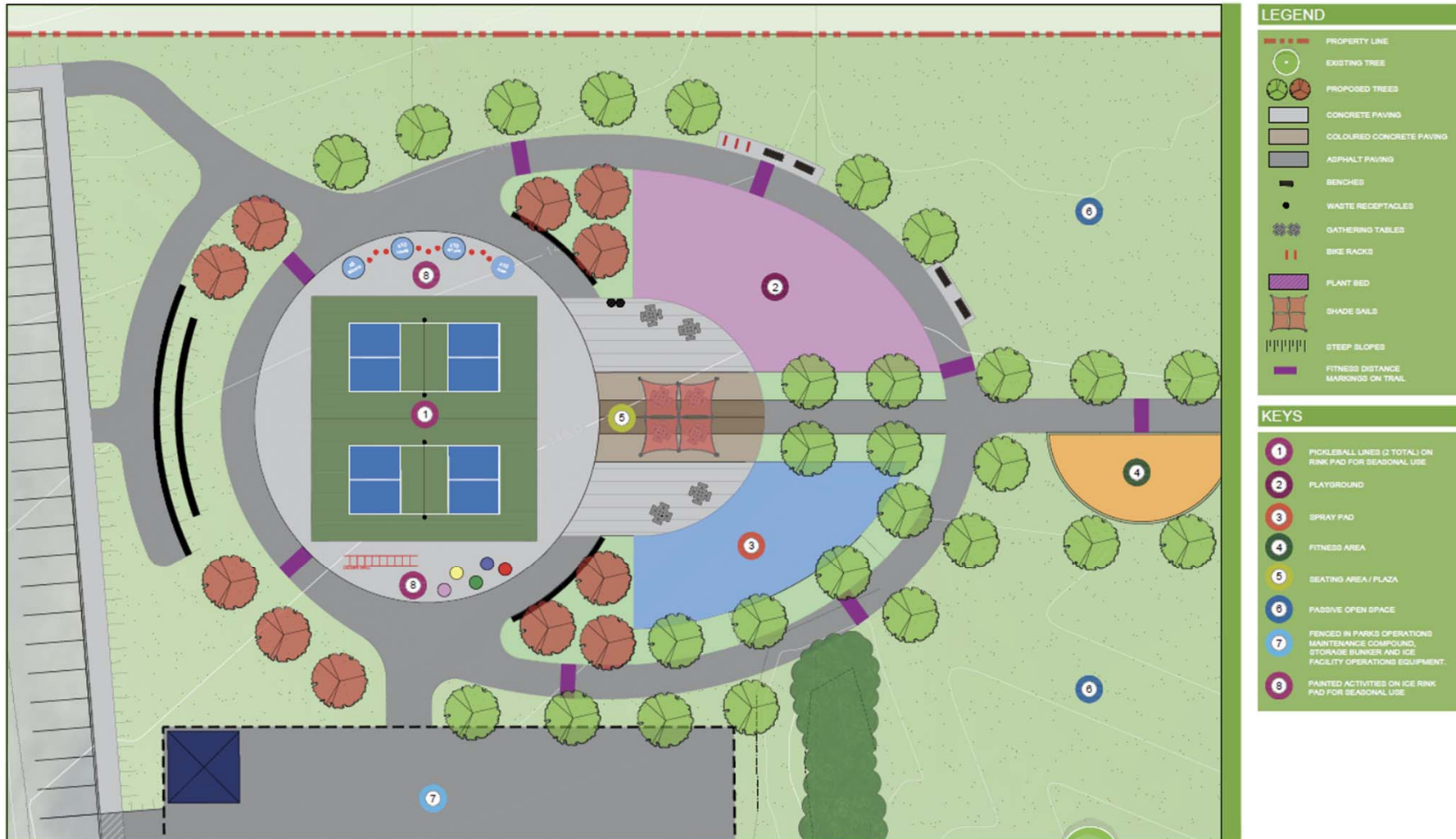
Concept 2



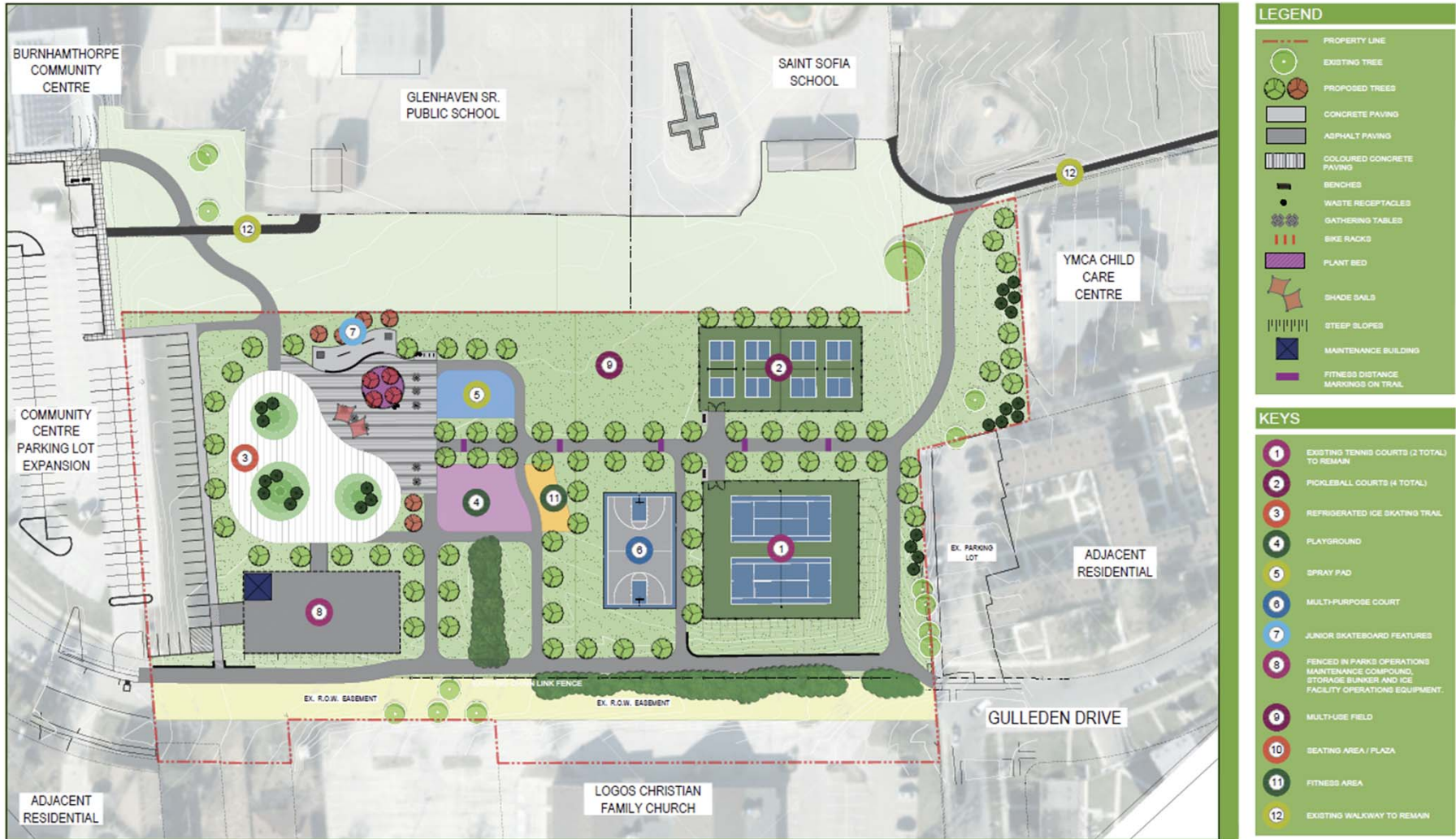
LEGEND	
	PROPERTY LINE
	EXISTING TREE
	PROPOSED TREES
	CONCRETE PAVING
	COLOURED CONCRETE PAVING
	ASPHALT PAVING
	BENCHES
	WASTE RECEPTACLES
	GATHERING TABLES
	BIKE RACKS
	PLANT BED
	SHADE SAILS
	STEEP SLOPES
	MAINTENANCE BUILDING
	FITNESS DISTANCE MARKINGS ON TRAIL

KEYS	
	EXISTING TENNIS COURTS (2 TOTAL) TO REMAIN WITH PICKLEBALL COURT LINES
	REFRIGERATED ICE SKATING RINK
	PLAYGROUND
	SPRAY PAD
	MULTI-PURPOSE COURT
	JUNIOR SKATEBOARD FEATURES
	FENCED IN PARKS OPERATIONS MAINTENANCE COMPOUND, STORAGE BUNKER AND ICE FACILITY OPERATIONS EQUIPMENT
	PASSIVE OPEN SPACE
	SEATING AREA / PLAZA
	FITNESS AREA
	EXISTING WALKWAY TO REMAIN

Concept 2



Concept 3



Concept 3



LEGEND

- PROPERTY LINE
- EXISTING TREE
- PROPOSED TREES
- CONCRETE PAVING
- ASPHALT PAVING
- COLOURED CONCRETE PAVING
- BENCHES
- WASTE RECEPTACLES
- GATHERING TABLES
- BIKE RACKS
- PLANT BED
- SHADE SAILS
- STEEP SLOPES
- MAINTENANCE BUILDING
- FITNESS DISTANCE MARKINGS ON TRAIL

KEYS

- 1 PAINTED TRICYCLE TRACK AND PLAYGROUND GAMES ON ICE SKATING TRAIL PAD
- 2 PLAYGROUND
- 3 SPRAY PAD
- 4 MULTI-PURPOSE COURT
- 5 JUNIOR SKATEBOARD FEATURES
- 6 FENCED IN PARKS OPERATIONS MAINTENANCE COMPOUND, STORAGE BUNKER AND ICE FACILITY OPERATIONS EQUIPMENT.
- 7 MULTU-USE FIELD
- 8 SEATING AREA / PLAZA
- 9 FITNESS AREA



UNIT PAVING ON CONCRETE BASE



STANDARD CONCRETE PAVING



COLOUR CONCRETE PAVING (COLOUR TBD)



ASPHALT PAVING

PARK AMENITIES



MULTI-USE BASKETBALL



SKATE PARK



TENNIS COURTS



PICKLEBALL COURTS



SPRAY PAD



PLAYGROUND



FITNESS CIRCUIT



PASSIVE OPEN SPACE



BENCH



BIKE RACKS



CONCRETE SEAT WALLS



WASTE RECEPTACLES



GATHERING TABLES WITH UMBRELLAS



GATHERING TABLES

NATIVE PLANTING



CONIFEROUS TREES



DECIDUOUS TREES



SHRUBS & PERENNIALS



Q & A

Gulleden Park Website



Project contact: Karlene Stubbs, Planner
Email: Karlene.Stubbs@Mississauga.ca

<https://yoursay.mississauga.ca/gulledenpark>

**Thank You for
Joining Us!**