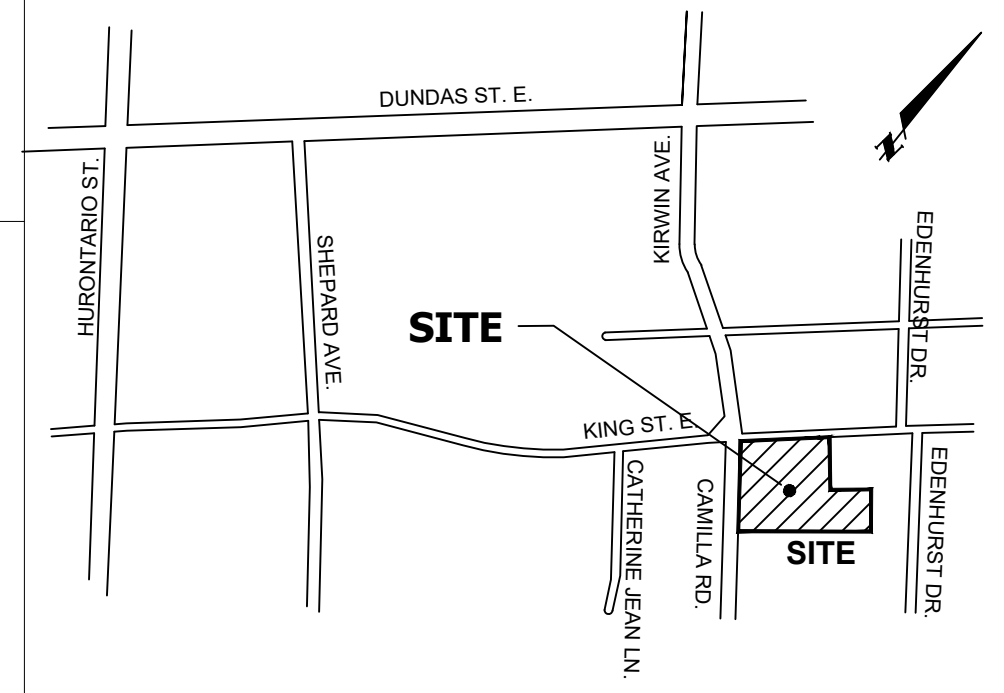
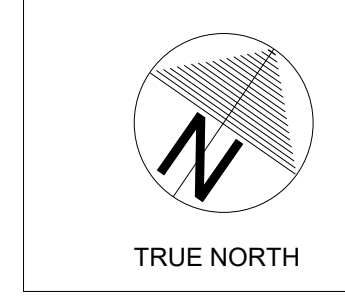
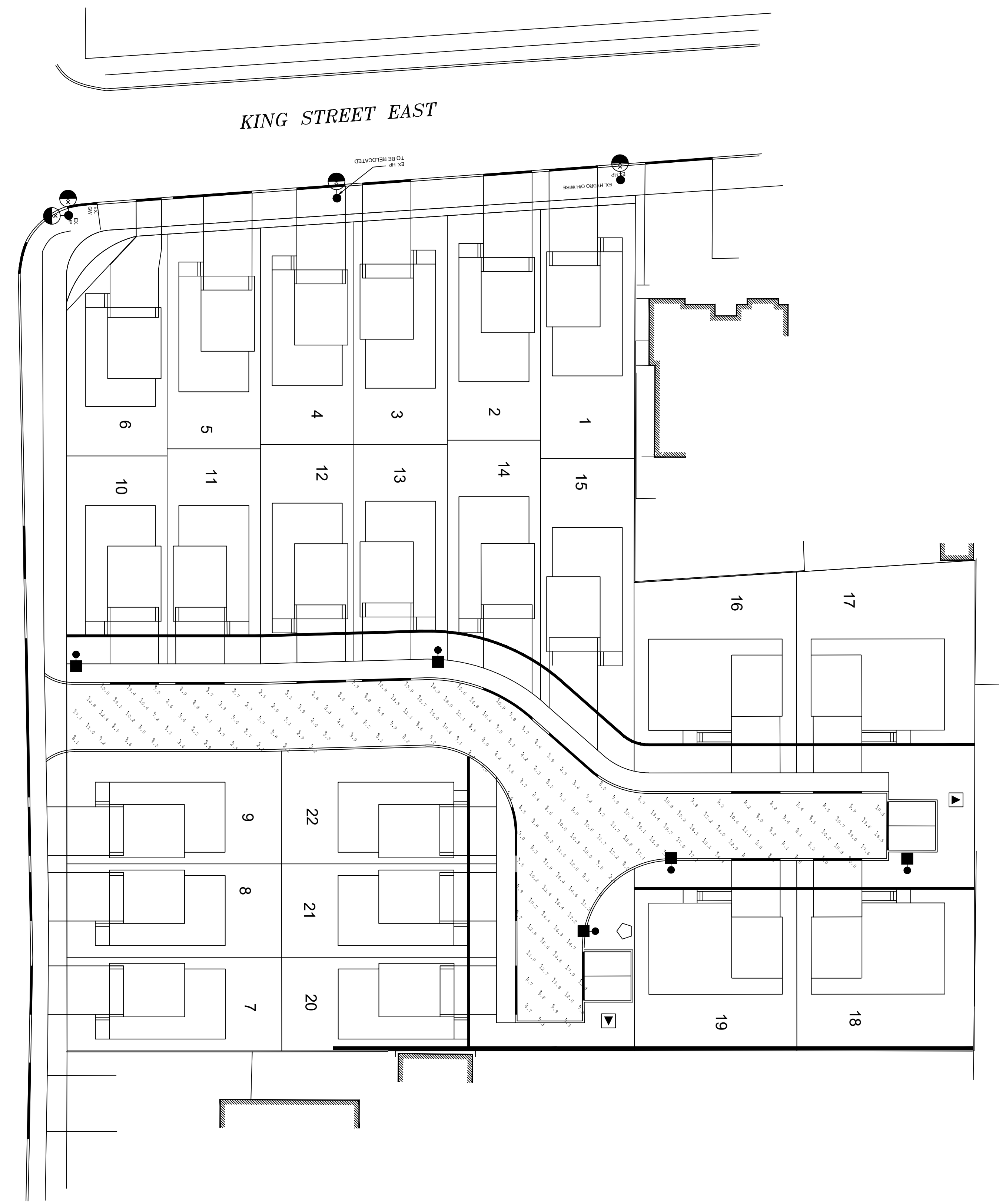


CAMILLA ROAD



- LEGEND**
- PROPOSED 100 TRANSFORMER
  - SITE LIGHTING: KING 40W 3000K LED FIXTURE C/W HOUSE SIDE BACK SHIELD AND PHOTOCONTROL, CAT: K601D-S-PANL-11-40SSLJ-7030-120-277-F4-PR7-3K MOUNTED ON STRESSCRETE OCTAGONAL 25 POLE, CAT: E250-BPO-G-S11 SIF KA170 C/W FW, ON BLACK 1.5m SCROLL ARM.
  - METERED STREETLIGHT POWER SUPPLY PEDESTAL TO BE MANUFACTURED BY PEDESTAL SOLUTIONS INC. (PSI), YORK, ONTARIO. CAT #SLM421-2-40, 100A 1 POLE MAIN BREAKER, 2-40 BRANCH BREAKERS, PROVISION FOR UP TO 12 BRANCH BREAKERS. WEATHER PROOF, TAMPER PROOF CABINET, DARK GREEN, PROVISIONS FOR PADLOCKING, MOUNT ON PRE-CAST CONCRETE FOUNDATION (UTILICON UP2022)
  - STREETLIGHT CABLE: 2-#6 CU. RWU-90 PVCJ & 1-#6 CU. TRIPLEX 1000V CABLE IN 50mm PVC TYPE 2 DUCT.
  - COMMON ELEMENT CABLE: 2-#2 CU. RWU-90 PVCJ & 1-#6 CU. TRIPLEX 1000V CABLE IN 50mm PVC TYPE 2 DUCT.
  - EXISTING TRANSFORMER.
  - PROPOSED C.E. ROAD CROSSING: PVC 50mm DIA & NO. FOR STREETLIGHT CABLE
  - GROUND ROD TO BE INSTALLED PER E.S.A. AND CITY OF MISSISSAUGA STANDARDS AND SPECIFICATIONS
  - EXISTING STREET LIGHT
  - PROPOSED HYDRO METER

REV. NO.	REVISION	REV. APPD.	DATE

**MISSISSAUGA**  
Transportation and Works

**Region of Peel**  
Working for you

Project Name:  
**KING AND CAMILLA DEVELOPMENT**  
DEVELOPER:  
CENTRAL BY CITY PARK HOLDINGS INC.

Sheet Title:  
*PHOTOMETRIC ANALYSIS*



**RTG SYSTEMS INC.**  
ELECTRICAL CONSULTING ENGINEERS

3018 Malvern Dr., Suite 201  
Burlington ON L7M 1A8  
Office: (905) 335-4470  
Toronto: (905) 827-7887  
E-MAIL: general@rtgsystems.com

Project No: *05848-00* Dwg No: *PHOT-1*

Scale: 1:300  
Date: 25-AUG-2022  
Area:  

Designed By: T.J.G.  
Drawn By: T.J.G.  
Checked By:  

City/Region File:  

# PHOTOMETRIC VALUES IN LUX

## PHOTOMETRIC ANALYSIS DOES NOT INCLUDE MUNICIPAL STREET LIGHTING

**PHOTOMETRIC SUMMARY - PAVED AREA**

ILLUMINANCE	AVERAGE	9.3 lux
	MINIMUM	2.1 lux
UNIFORMITY	AVG/MIN RATIO	4.4:1
	MAX/MIN RATIO	11.3:1

**NOTE:** STREETLIGHTING LAYOUT SUBJECT TO APPROPRIATE CITY OF MISSISSAUGA OFFICE/DEPARTMENT APPROVAL

**CERTIFICATE**  
THIS IS TO CERTIFY THAT THE CONSTRUCTION AS RECORDED IN THIS DRAWING IS CONSISTENT WITH THE APPROVED PLAN, STANDARD DESIGNS, OR WORK INSTRUCTION AND THAT APPROVED EQUIPMENT HAS BEEN USED.

NAME:  DATE:  

SIGNATURE:  POSITION:  

**NOTE:** THE STREETLIGHTING SYSTEM HAS BEEN DESIGNED IN ACCORDANCE WITH THE LATEST CITY OF MISSISSAUGA STANDARDS.

ENERSOURCE HYDRO MISSISSAUGA CABLES WILL BE INSTALLED IN CONJUNCTION WITH COMMUNICATION CABLES AND GAS IN A JOINT USE TRENCH LOCATION SHOWN.