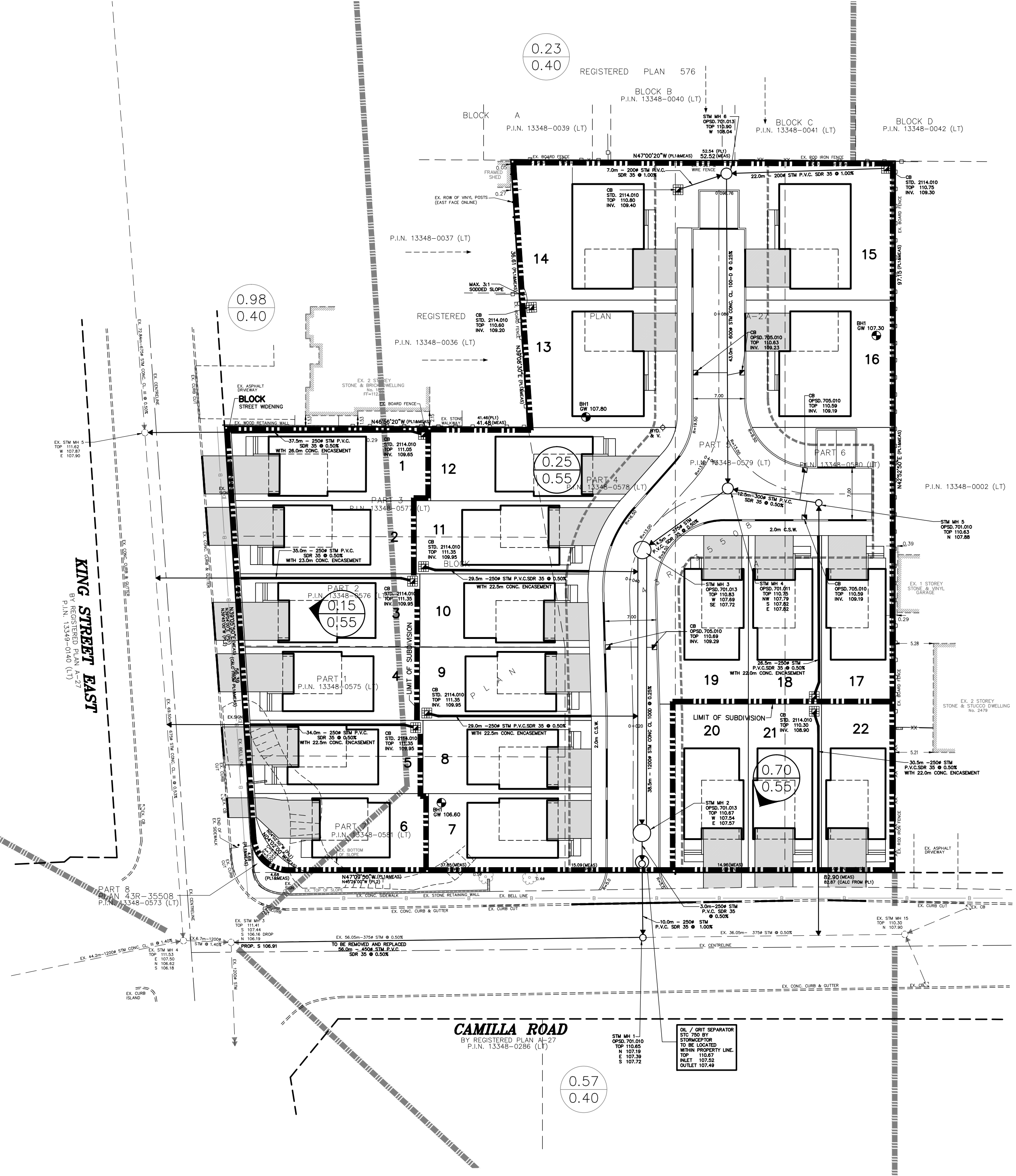


- LEGEND**
- EXISTING STORM SEWER
 - PROPOSED STORM SEWER
 - EXISTING STORM MANHOLE
 - PROPOSED STORM MANHOLE
 - EXISTING OVERLAND FLOW ROUTE
 - PROPOSED OVERLAND FLOW ROUTE
 - DRAINAGE AREA BOUNDARY
 - AREA (HECTARES)
 - RUN-OFF COEFFICIENT
 - LIMIT OF PROPERTY



CITY PARK HOMES

SKIRA & ASSOCIATES LTD.
CONSULTING ENGINEERS
3484 Berryhill Court, Suite 100, Mississauga, Ontario L5C 4P6
Tel: (905) 276-5100 Fax: (905) 270-1938 Email: info@skiraconsult.ca

STORM DRAINAGE SYSTEM

PROJECT No. 220-M109
DATE - JUNE 2022
SCALE - 1 : 400

FIGURE
No. 2

DRAWN BY - E.W.