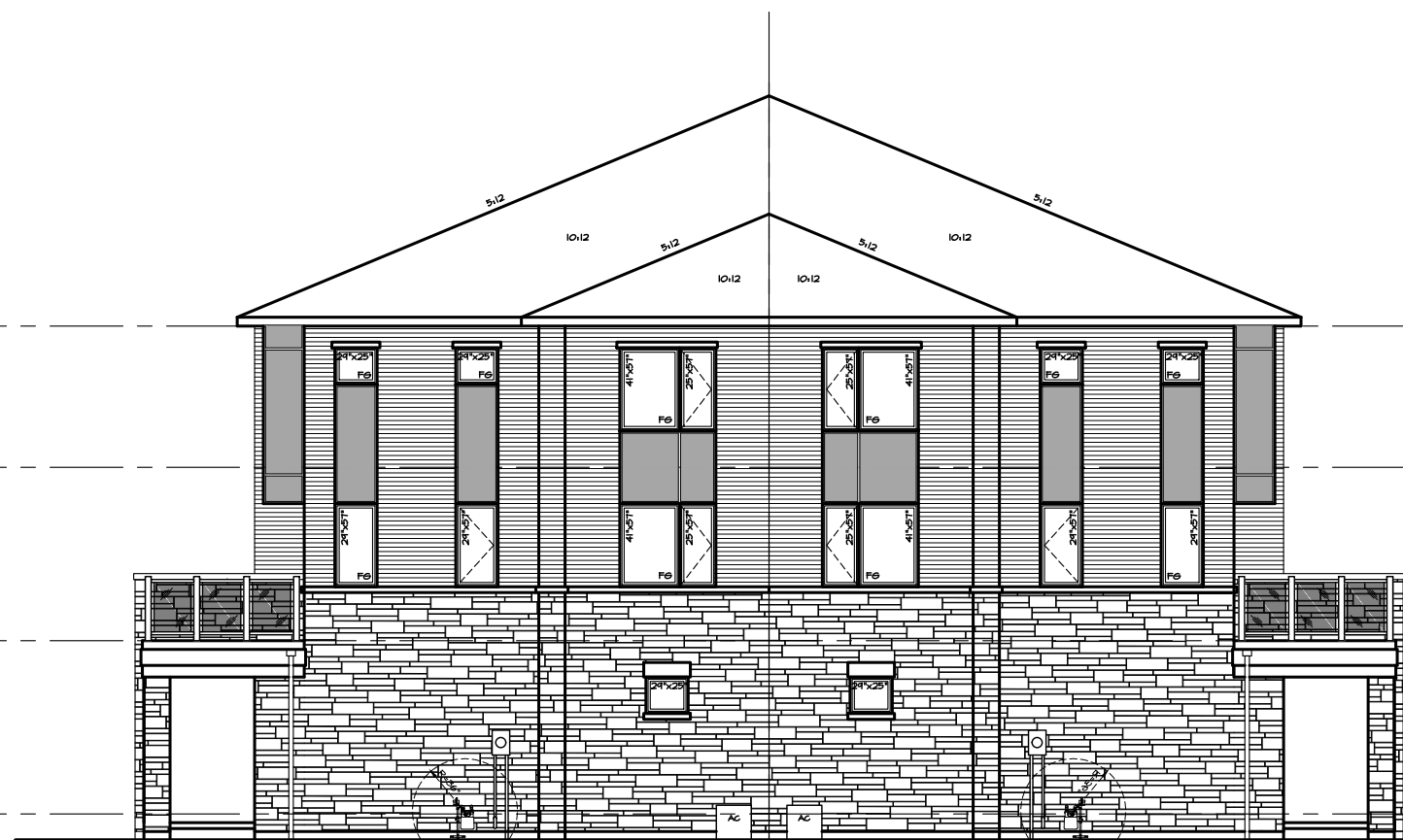




12 UNIT HVHD
REV.

1 UNIT HVHD

SOUTH SIDE ELEVATION 'MO'
VILLAGE HOMES
BLOCK 21



6 UNIT HVHB

7 UNIT HVHB
REV.

NORTH ELEVATION 'MO'
VILLAGE HOMES
BLOCK 21

TOP OF PLATE
TOP OF HINDOH
FIN. THIRD FLOOR
TOP OF HINDOH
FIN. MAIN FLOOR
TOP OF DOOR
FIN. GROUND FLOOR
U/S OF FOOTING

6'-11 1/2" (2076mm)
7'-11 1/2" (2394mm)
6'-0" (1829mm)
1'-0" (305mm)

4	REVISED AS PER NEW CONCEPT PLAN	22.07.19	DJS
3	ISSUED FOR DRAFTING & ZONING	22.06.20	DJS
2	ISSUED FOR CLIENT APPROVAL	22.06.02	DJS
1	ISSUED FOR CLIENT APPROVAL	22.03.07	DJS