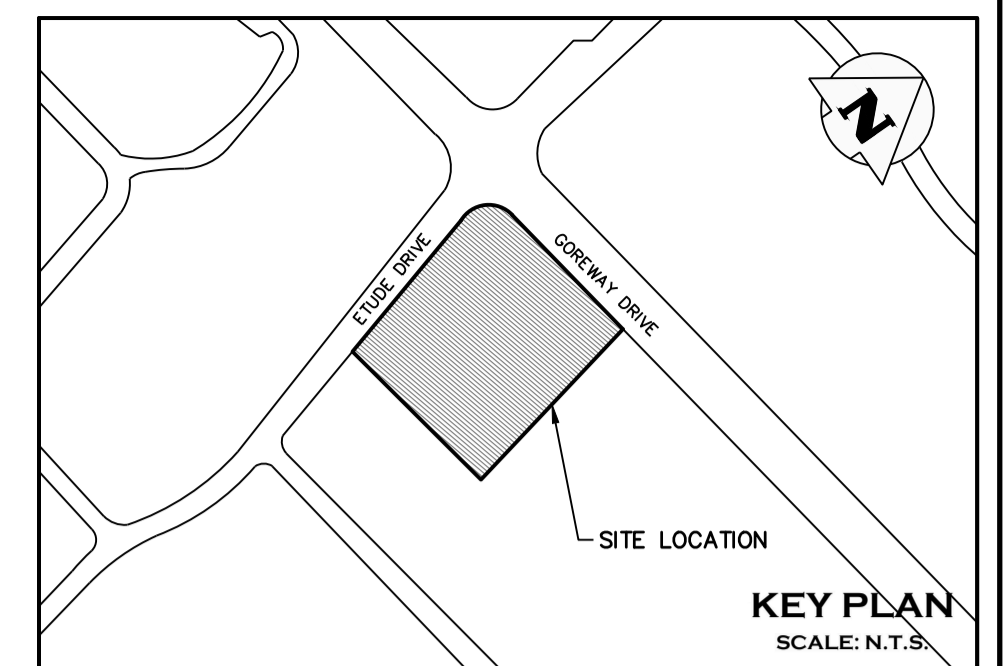
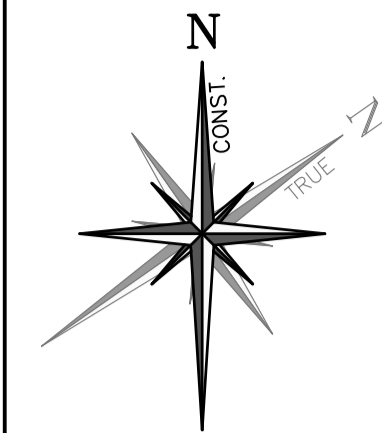
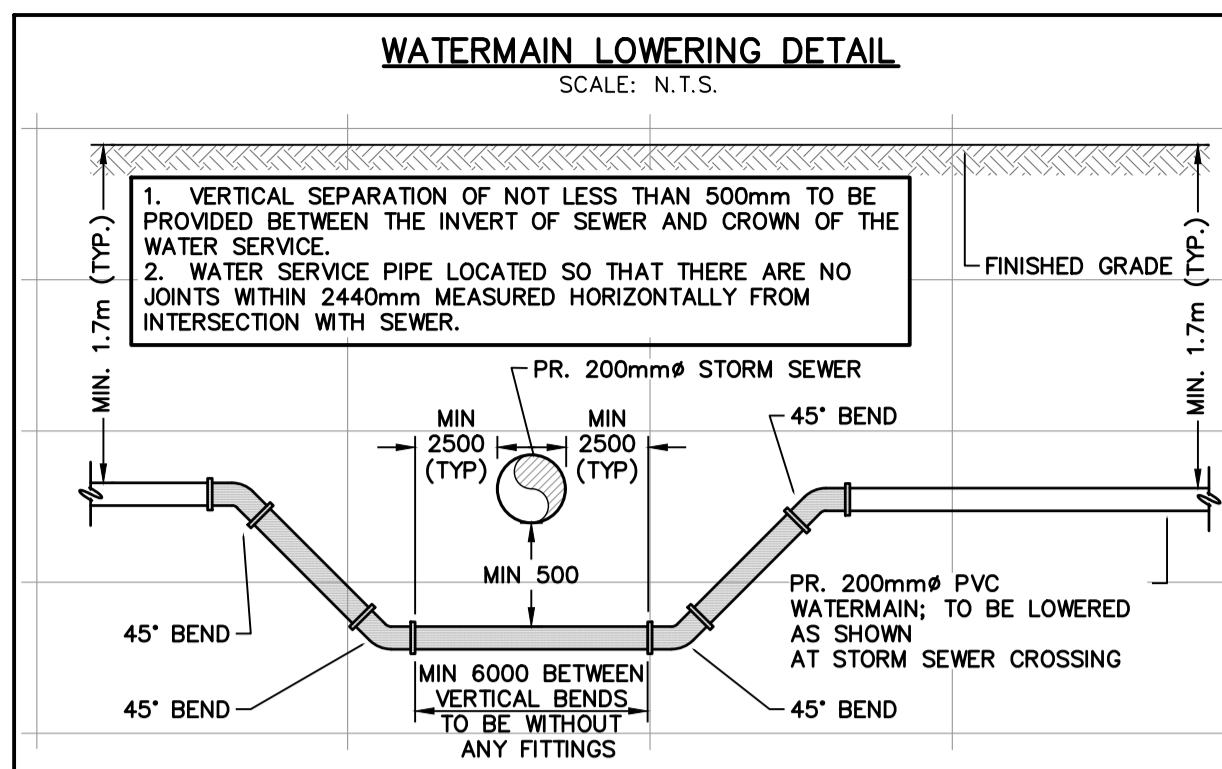
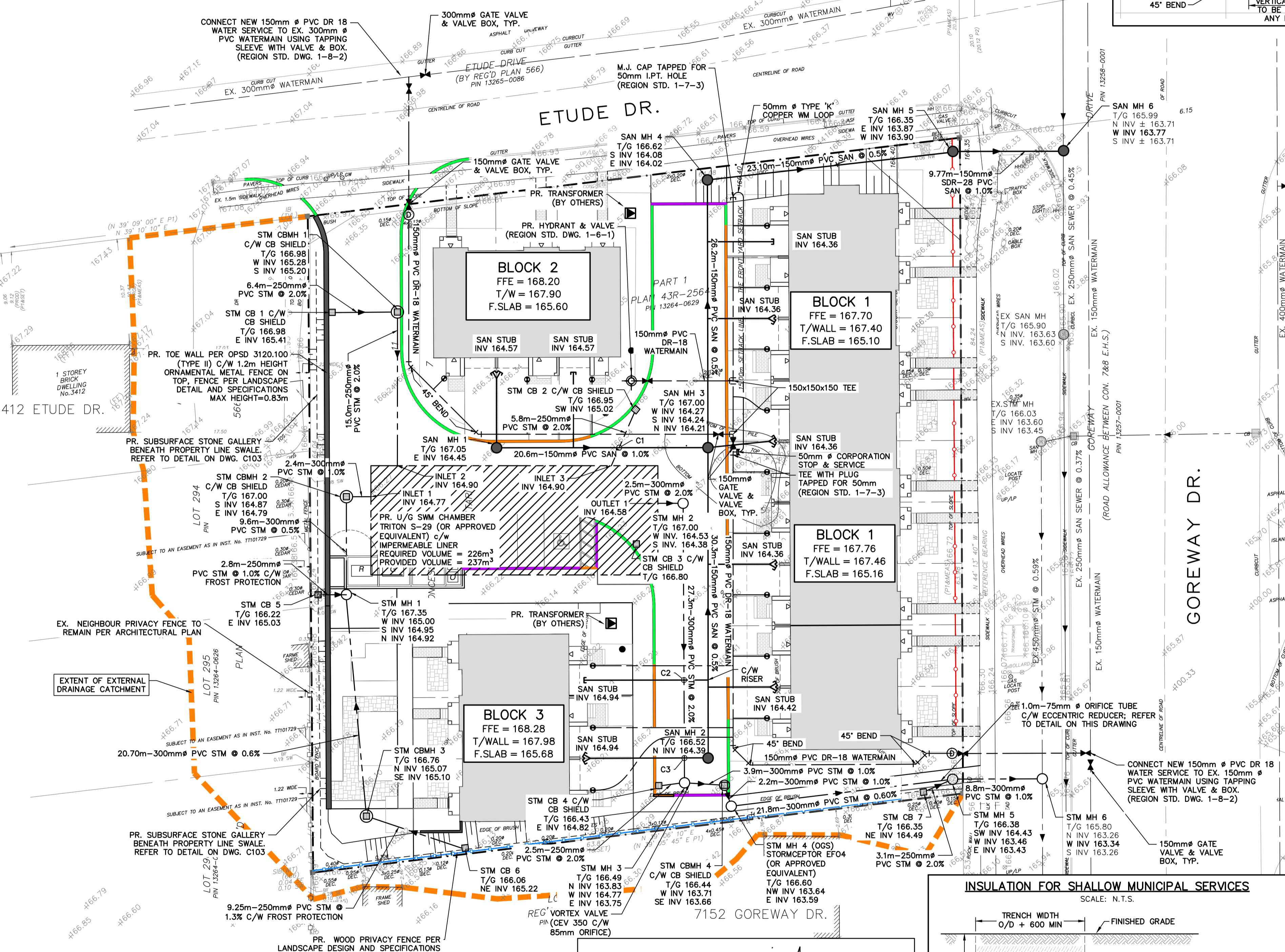


REGION OF PEEL NOTES:

- ALL MATERIALS AND CONSTRUCTION METHODS MUST CORRESPOND TO THE CURRENT PEEL PUBLIC WORKS STANDARDS AND SPECIFICATIONS.
- WATERMAIN AND/OR WATER SERVICE MATERIALS 100mm (4") AND LARGER MUST BE PVC DR-18 (AWWA C900-16). SIZE 50mm (2") AND SMALLER MUST BE COPPER TYPE "K" (ASTM-B88-49).
- WATERMAINS AND/OR WATER SERVICES ARE TO HAVE A MINIMUM COVER OF 1.7m (5'6") WITH A MINIMUM HORIZONTAL SPACING OF 1.2m (4") FROM THEMSELVES AND ALL OTHER UTILITIES.
- PROVISIONS FOR FLUSHING WATER LINE PRIOR TO TESTING, ETC., MUST BE PROVIDED WITH AT LEAST A 50mm (2") OUTLET ON 100mm (4") AND LARGER LINES. COPPER LINES ARE TO HAVE FLUSHING POINTS AT THE END, THE SAME SIZE AS THE LINE. THEY MUST ALSO BE HOSED OR PIPED TO ALLOW WATER TO DRAIN ONTO A PARKING LOT OR DOWN A DRAIN. ON FIRE LINES, FLUSHING OUTLET TO BE 100mm (4") MINIMUM ON A HYDRANT.

- ALL CURB STOPS TO BE 3.0m(10') OFF THE FACE OF THE BUILDING UNLESS OTHERWISE NOTED.
- HYDRANT AND VALVE SET TO REGION STANDARD 1-6-1 DIMENSION 'A' & 'B', 0.7m (2') AND 0.9m (3') AND TO HAVE PUMPER NOZZLE.
- WATERMAINS TO BE INSTALLED TO GRADES SHOWN ON APPROVED SITE PLAN. COPY OF GRADE SHEET MUST BE SUPPLIED TO INSPECTOR PRIOR TO COMMENCEMENT OF WORK, WHERE REQUESTED BY INSPECTOR.
- WATERMAINS MUST HAVE A VERTICAL CLEARANCE OF 0.3m (12") OVER / 0.5m (20") UNDER SEWERS AND ALL OTHER UTILITIES WHEN CROSSING.
- ALL PROPOSED WATER PIPING MUST BE ISOLATED FROM EXISTING LINES IN ORDER TO ALLOW INDEPENDENT PRESSURE TESTING AND CHLORINATING FROM EXISTING SYSTEMS.
- ALL LIVE TAPPING AND OPERATION OF REGION WATER VALVES SHALL BE ARRANGED THROUGH THE REGIONAL INSPECTOR ASSIGNED, OR BY CONTACTING THE OPERATIONS AND MAINTENANCE DIVISION.
- LOCATION OF ALL EXISTING UTILITIES IN THE FIELD TO BE ESTABLISHED BY THE CONTRACTOR.

- THE CONTRACTOR(S) SHALL BE SOLELY RESPONSIBLE FOR LOCATES, EXPOSING, SUPPORTING AND PROTECTING OF ALL UNDERGROUND AND OVERHEAD UTILITIES AND STRUCTURES EXISTING AT THE TIME OF CONSTRUCTION IN THE AREA OF THEIR WORK. WHETHER SHOWN ON THE PLANS OR NOT AND FOR ALL REPAIRS AND CONSEQUENCES RESULTING FROM DAMAGE TO SAME.
- THE CONTRACTOR(S) SHALL BE SOLELY RESPONSIBLE TO GIVE 72 HOURS WRITTEN NOTICE TO UTILITIES PRIOR TO CROSSING SUCH UTILITIES, FOR THE PURPOSE OF INSPECTION BY THE CONCERNED UTILITY. THIS INSPECTION WILL BE FOR THE DURATION OF THE CONSTRUCTION, WITH THE CONTRACTOR RESPONSIBLE FOR ALL COSTS ARISING FROM SUCH INSPECTION.
- ALL PROPOSED WATER PIPING MUST BE ISOLATED THROUGH A TEMPORARY CONNECTION THAT SHALL INCLUDE AN APPROPRIATE CROSS-CONNECTION CONTROL DEVICE, CONSISTENT WITH DEGREE OF HAZARD, FOR BACKFLOW PREVENTION OF THE ACTIVE DISTRIBUTION SYSTEM, CONFORMING TO REGION OF PEEL STANDARDS 1-7-7 OR 1-7-8.



LEGEND

- PROPERTY LINE
- EXISTING WATERMAIN & GATE VALVE
- EXISTING STORM SEWER & MANHOLE
- EXISTING SINGLE / DOUBLE CATCHBASIN
- EXISTING SANITARY SEWER & MANHOLE
- EXISTING FIRE HYDRANT & GATE VALVE
- PROPOSED WATERMAIN & GATE VALVE
- PROPOSED WATER SERVICE LATERAL (25mm Ø)
- PROPOSED FIRE HYDRANT & GATE VALVE
- PROPOSED DETECTOR CHECK VALVE IN CHAMBER INSTALLED PER REGION STD. 1-3-1
- PROPOSED STORM SEWER & MANHOLE
- PROPOSED SINGLE / DOUBLE CATCHBASIN
- PROPOSED SANITARY SEWER & MANHOLE
- PROPOSED SAN. SERVICE LATERAL (125mm Ø)
- PROPOSED LIGHT STANDARD (BY OTHERS)

CONTRACTOR TO ENSURE MINIMUM 0.50m VERTICAL CLEARANCE BETWEEN THE EXTERIOR OF THE WATERMAIN PIPE AND THE EXTERIOR OF SEWER PIPES.

IN CASE OF CONFLICT BETWEEN THE PROPOSED WATERMAIN AND THE PROPOSED SEWERS, CONTRACTOR TO LOWER THE WATERMAIN UNDER THE SEWER PIPE TO ENSURE MINIMUM 0.50m CLEARANCE BETWEEN THE EXTERIOR OF THE PIPES.

ALL SANITARY AND STORM SEWERS TO BE SDR-35 PVC, UNLESS OTHERWISE NOTED.

ALL SANITARY SERVICE CONNECTIONS TO BE SDR-28 PVC.

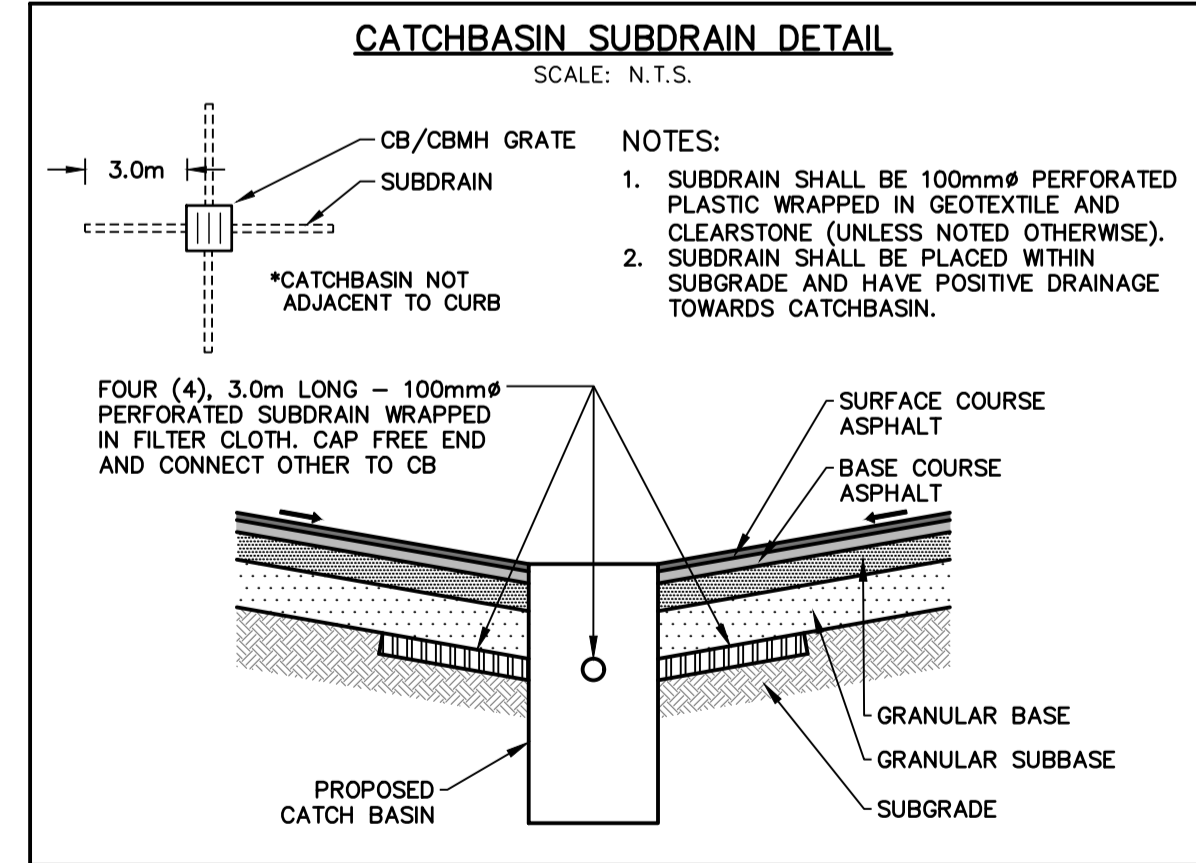
STORM STRUCTURE TABLE

STORM I.D.	SIZE	SPEC.
STM MH 1	1200mm Ø	OPSD 701.010
STM MH 2	1200mm Ø	OPSD 701.010
STM MH 3	1200mm Ø	OPSD 701.010
STM MH 4	1200mm Ø	OPSD 701.010
STM MH 5	1200mm Ø	OPSD 701.010
STM MH 6	1200mm Ø	OPSD 701.010
STM CBMH 1	1200mm Ø	OPSD 701.010
STM CBMH 2	1200mm Ø	OPSD 701.010
STM CBMH 3	1200mm Ø	OPSD 701.010
STM CBMH 4	1200mm Ø	OPSD 701.010
STM CBMH 5	1200mm Ø	OPSD 701.010
STM CBMH 6	1200mm Ø	OPSD 701.010
STM CB 1	600mm x 600mm	OPSD 705.010
STM CB 2	600mm x 600mm	OPSD 705.010
STM CB 3	600mm x 600mm	OPSD 705.010
STM CB 4	600mm x 600mm	OPSD 705.010
STM CB 5	600mm x 600mm	OPSD 705.010
STM CB 6	600mm x 600mm	OPSD 705.010
STM CB 7	600mm x 600mm	OPSD 705.010

SANITARY STRUCTURE TABLE

SAN I.D.	SIZE	SPEC.
SAN MH 1	1200mm Ø	R.O.P. 2-5-3
SAN MH 2	1200mm Ø	R.O.P. 2-5-3
SAN MH 3	1200mm Ø	R.O.P. 2-5-3
SAN MH 4	1200mm Ø	R.O.P. 2-5-3
SAN MH 5	1200mm Ø	R.O.P. 2-5-3
SAN MH 6	1200mm Ø	R.O.P. 2-5-3

CROSSINGS					
ID	UPPER		LOWER		SEP. (m)
	TYPE	EL.(m)	TYPE	EL.(m)	
C1	STM INV	164.94	SAN OBV	164.51	0.43
C2	SAN INV	164.84	STM OBV	164.34	0.50
C3	SAN INV	164.64	STM OBV	164.14	0.50



ALL CATCHBASIN GRATES WITHIN ROAD TO BE OPSD 400.02

ALL CATCHBASIN GRATES WITHIN LANDSCAPED AREAS/ SWALE TO BE OPSD 400.12

4	ISSUED FOR ZBA/OPA AND SUBMISSION	2022/APR/20
3	ISSUED FOR 4TH SUBMISSION ZBA/OPA	2019/OCT/30
2	ISSUED FOR 3RD SUBMISSION ZBA/OPA	2019/SEPT/30
1	ISSUED FOR 2ND SUBMISSION ZBA/OPA	2019/AUG/30
0	ISSUED FOR ZBA/OPA	2017/DEC/15
No.	ISSUE / REVISION	YYYY/MM/DD

ELEVATION NOTE:

ELEVATIONS SHOWN HEREON ARE DERIVED FROM THE CITY OF MISSISSAUGA BENCHMARK NO. 448 LOCATED ON WEST FACE AT SOUTH CHRMER OF WEST END OF A CONCRETE BOX CULVERT ACROSS GOREWAY DRIVE, 152m NORTH OF DERRY ROAD EAST.

ELEVATION = 162.55m

SURVEY NOTES:

SURVEY COMPLETED J.H. GELBLOOM SURVEYING LIMITED. (2017/MAY/08)

PROJECT No.: 17-089

BEARINGS ARE UTM GRID, DERIVED FROM RTN OBSERVATIONS

UTM ZONE 17, NAD83 (GRS83) (2010.0)

DISTANCES ARE GROUND AND CAN BE CONVERTED TO GRID BY MULTIPLYING BY THE COMBINED SCALE FACTOR OF 0.9996781

SITE PLAN NOTES:

DESIGN ELEMENTS ARE BASED ON SITE PLAN BY JARDIN DESIGN GROUP INC.

DRAWING No.: A-01a, REV.2 (2022/MAR/31)

PROJECT No.: 17-18

DRAWING NOTES:

THIS DRAWING IS THE EXCLUSIVE PROPERTY OF C.F. CROZIER & ASSOCIATES INC. AND THE REPRODUCTION OF ANY PART OF IT WITHOUT PRIOR WRITTEN CONSENT OF THIS OFFICE IS STRICTLY PROHIBITED.

THE CONTRACTOR SHALL VERIFY ALL DIMENSIONS, LEVELS, AND DATUMS ON SITE AND REPORT ANY DISCREPANCIES OR OMISSIONS TO THIS OFFICE PRIOR TO CONSTRUCTION.

THIS DRAWING IS TO BE READ AND UNDERSTOOD IN CONJUNCTION WITH ALL OTHER PLANS AND DOCUMENTS APPLICABLE TO THIS PROJECT. DO NOT SCALE THIS DRAWING.

ALL EXISTING UNDERGROUND UTILITIES TO BE VERIFIED IN THE FIELD BY THE CONTRACTOR PRIOR TO CONSTRUCTION.

EXISTING INVERTS FROM AS-BUILT DRAWINGS 20065-D, 40529-D

Region of Peel

Working for you

MISSISSAUGA

Project: 7170 GOREWAY DRIVE
CITY OF MISSISSAUGA

Drawing: SITE SERVICING PLAN

NOT FOR CONSTRUCTION

CROZIER CONSULTING ENGINEERS

2800 HIGH POINT DRIVE
SUITE 100
MILTON, ON L9T 6P4
905-875-0026 T
905-875-4915 F
WWW.CFCROZIER.CA

Drawn	R.L.	Design	H.L.	Project No.	1346-4573
Check	N.C.	Check	N.C.	Scale	1:250
				Dwg.	C 102

