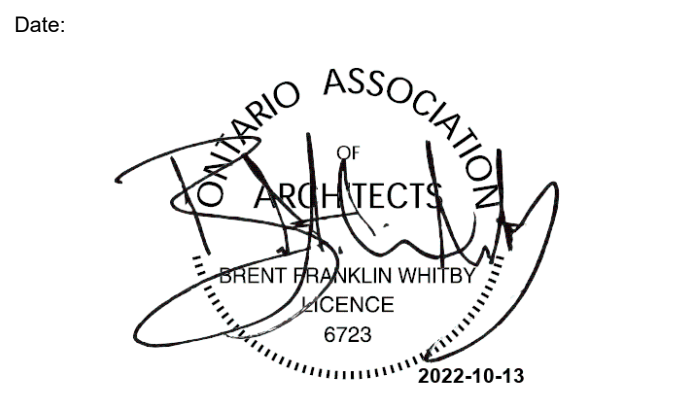


All Drawings, Specifications, and Related Documents are the Copyright of the Architect. The Architect retains all rights to control all uses of these documents for the intended issuance/use as identified below. Reproduction of these Documents, without permission from the Architect, is strictly prohibited. The Authorities Having Jurisdiction are permitted to use, distribute, and reproduce these drawings for the intended issuance as noted and dated below, however the extended permission to the Authorities Having Jurisdiction in no way debases or limits the Copyright of the Architect, or control of use of these documents by the Architect.

Do not scale the drawings.
This Drawing is Not To Be Used For Construction Until Signed By The Architect.



KIRKOR
ARCHITECTS AND PLANNERS

20 De Boers Drive Suite 400
Toronto, ON M3J 0H1

Revisions:		
No.:	Revision:	Date:

01	ZBA/OPA Submission	Oct. 14, 2022
----	--------------------	---------------

EDENSHAW

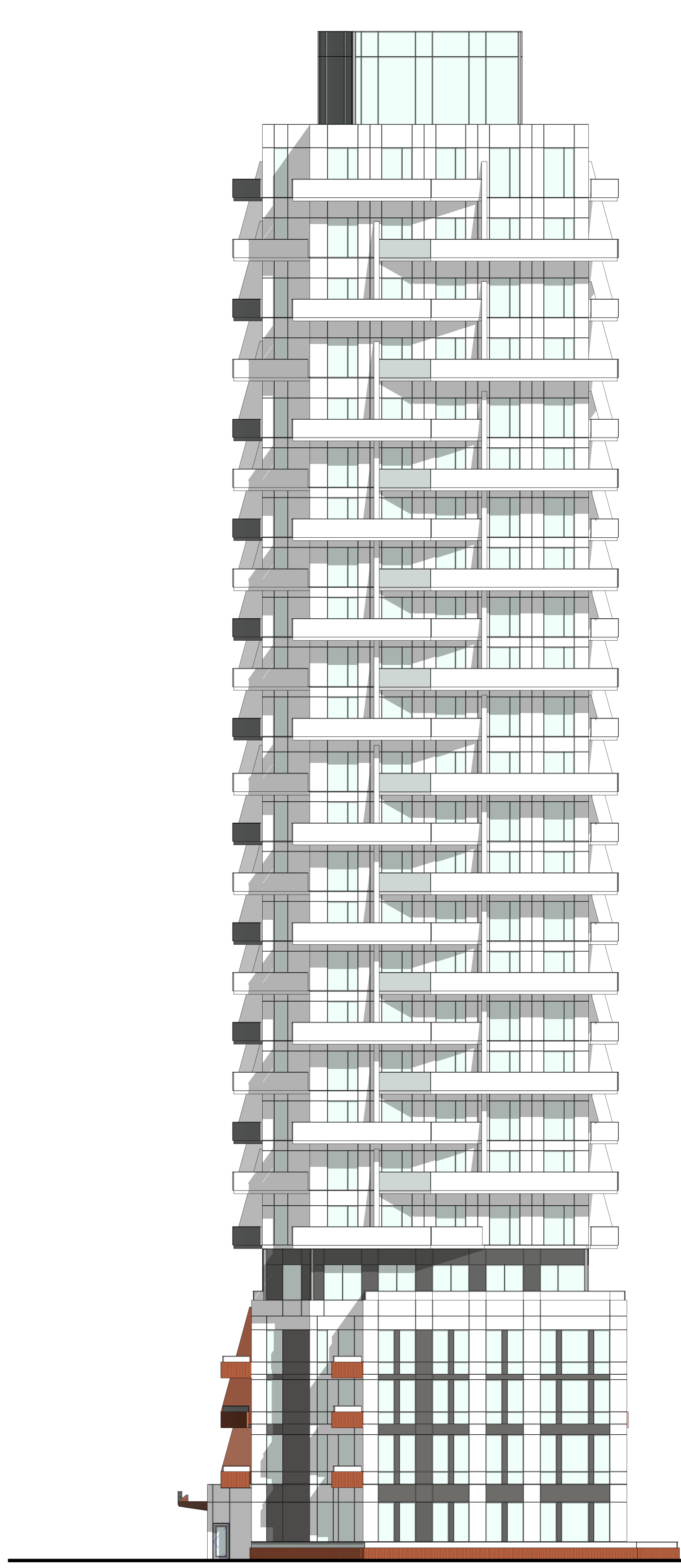
Client:
EDENSHAW SSR DEVELOPMENTS LTD.

49 SOUTH SERVICE RD, MISSISSAUGA, ON
Proposed Residential Development

Drawing Title:
North & East Elevations

Scale:
1 : 200
Drawn by:
A.E.
Checked by:
R.P.
Project No.:
22-073
Date:
10/14/22
Drawing No.:

dA3.01



6000	TOP MPH	90.500	190.200
3850	MPH	84.500	184.200
3550	LEVEL 26	80.650	180.350
3350	LEVEL 25	77.100	176.800
3150	LEVEL 24	73.550	173.250
2950	LEVEL 23	70.000	169.700
2750	LEVEL 22	66.450	166.150
2550	LEVEL 21	63.500	163.200
2350	LEVEL 20	60.550	160.250
2150	LEVEL 19	57.600	157.300
1950	LEVEL 18	54.650	154.350
1750	LEVEL 17	51.700	151.400
1550	LEVEL 16	48.750	148.450
1350	LEVEL 15	45.500	145.200
1150	LEVEL 14	42.550	142.250
950	LEVEL 13	39.600	139.300
750	LEVEL 12	36.650	136.350
550	LEVEL 11	33.700	133.400
350	LEVEL 10	30.750	130.450
150	LEVEL 09	27.800	127.500
0	LEVEL 08	24.850	124.550
0	LEVEL 07	21.900	121.600
0	LEVEL 06	18.950	118.650
0	LEVEL 05	14.850	114.550
0	LEVEL 04	11.000	110.700
0	LEVEL 03	8.050	107.750
0	LEVEL 02	4.500	104.200
0	LEVEL 01	0.000	99.700

North Elevation **2**
1 : 200 dA3.01



6000	TOP MPH	90.500	190.200
3850	MPH	84.500	184.200
3550	LEVEL 26	80.650	180.350
3350	LEVEL 25	77.100	176.800
3150	LEVEL 24	73.550	173.250
2950	LEVEL 23	70.000	169.700
2750	LEVEL 22	66.450	166.150
2550	LEVEL 21	63.500	163.200
2350	LEVEL 20	60.550	160.250
2150	LEVEL 19	57.600	157.300
1950	LEVEL 18	54.650	154.350
1750	LEVEL 17	51.700	151.400
1550	LEVEL 16	48.750	148.450
1350	LEVEL 15	45.500	145.200
1150	LEVEL 14	42.550	142.250
950	LEVEL 13	39.600	139.300
750	LEVEL 12	36.650	136.350
550	LEVEL 11	33.700	133.400
350	LEVEL 10	30.750	130.450
150	LEVEL 09	27.800	127.500
0	LEVEL 08	24.850	124.550
0	LEVEL 07	21.900	121.600
0	LEVEL 06	18.950	118.650
0	LEVEL 05	14.850	114.550
0	LEVEL 04	11.000	110.700
0	LEVEL 03	8.050	107.750
0	LEVEL 02	4.500	104.200
0	LEVEL 01	0.000	99.700

East Elevation **1**
1 : 200 dA3.01