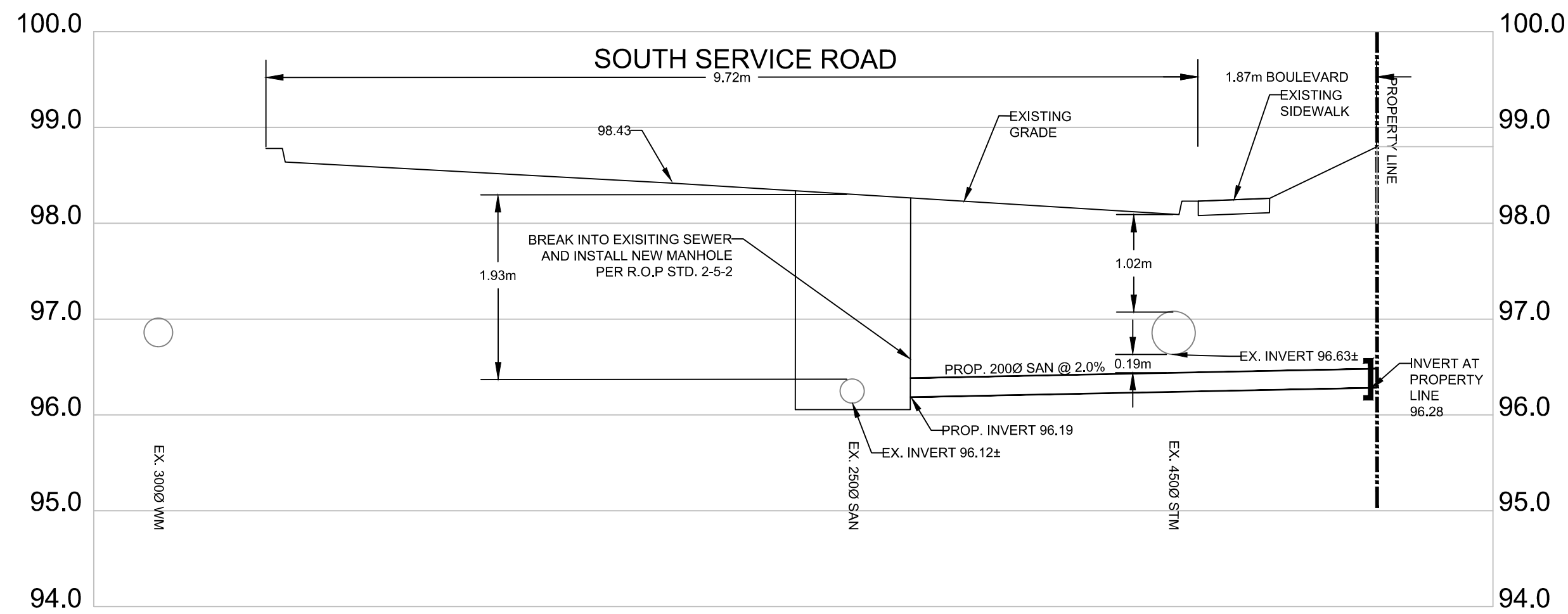
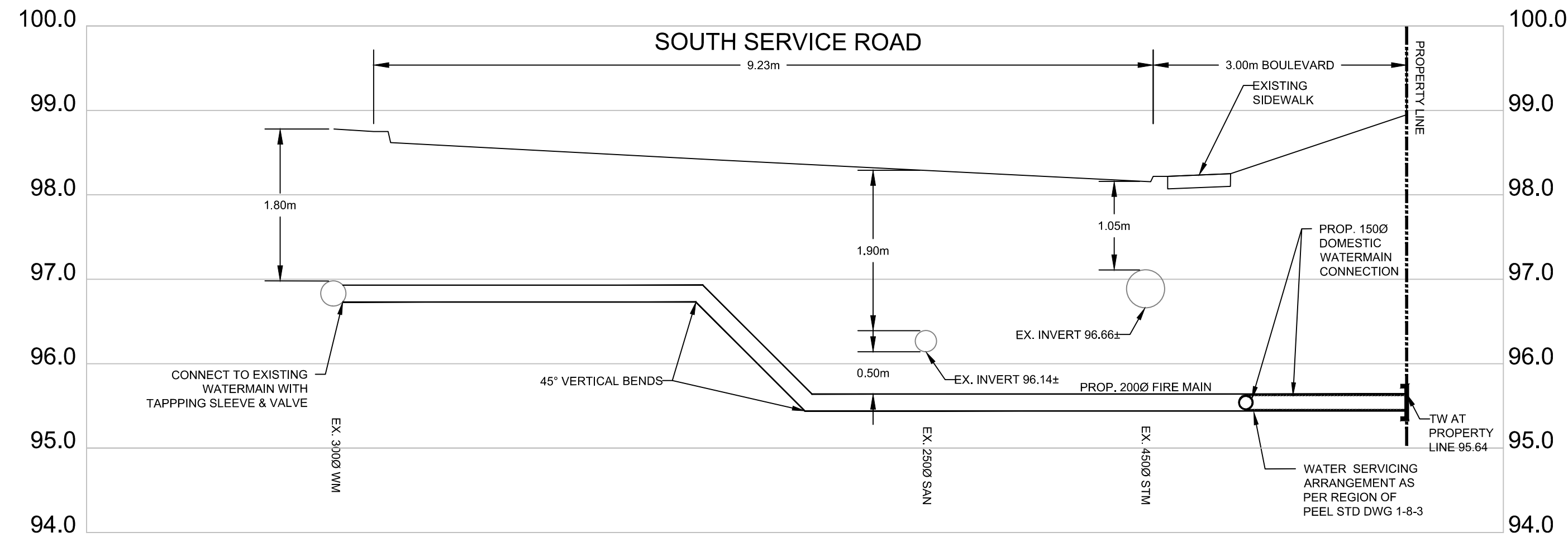


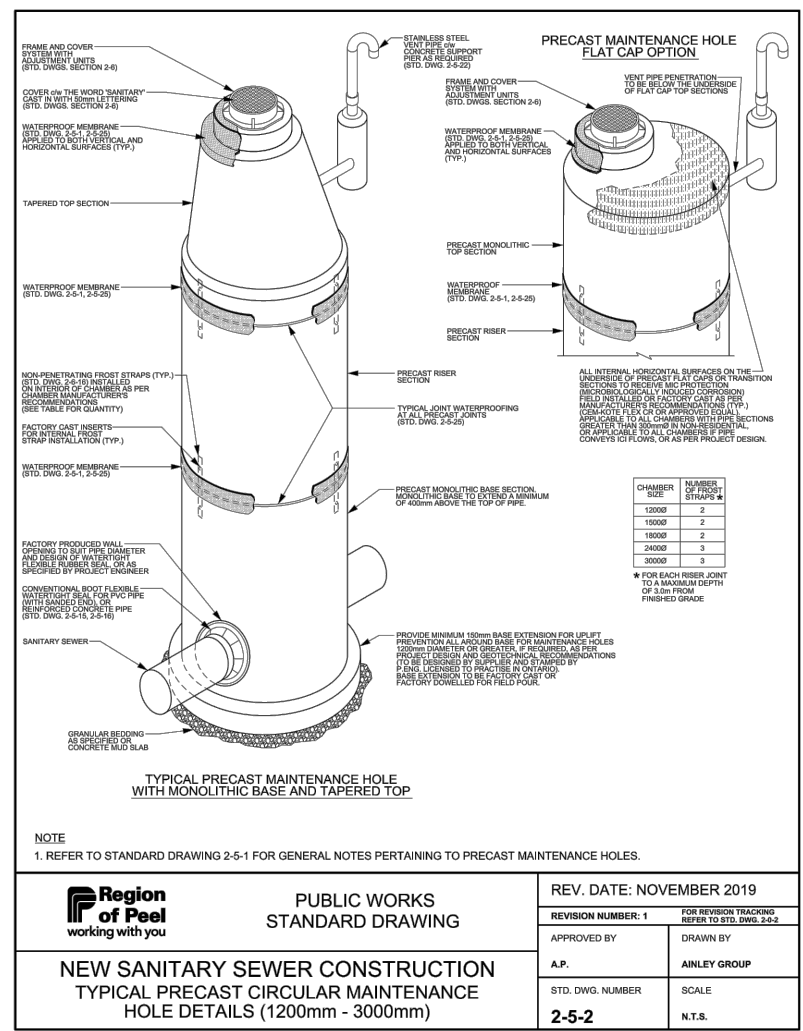
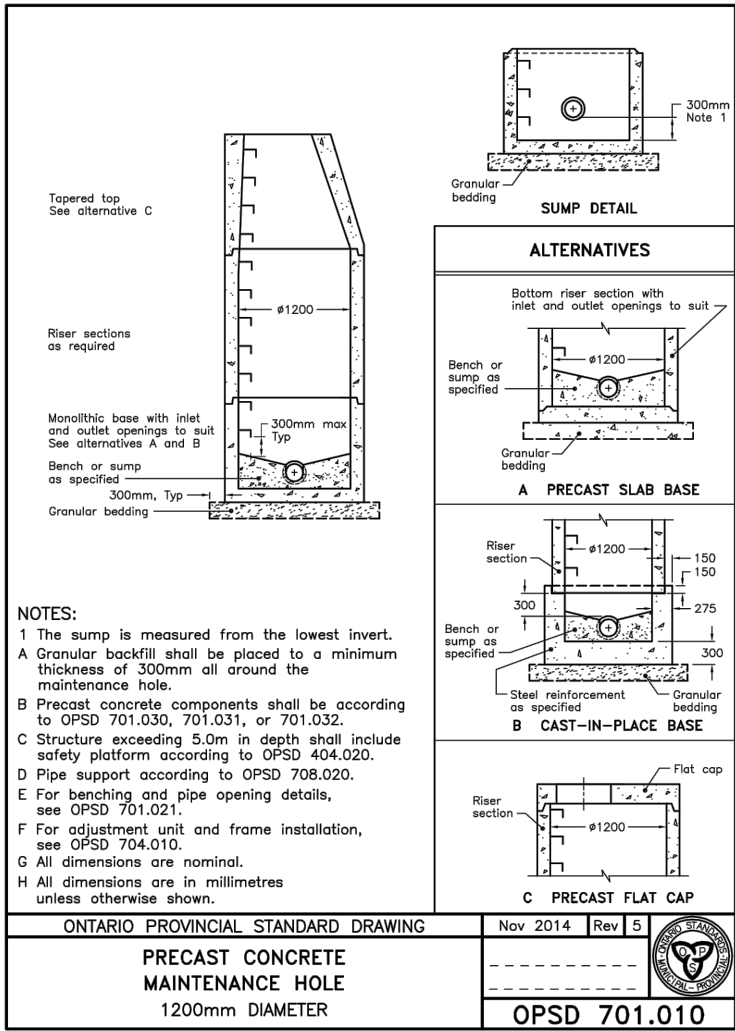
CROSS SECTION 1-1
SOUTH SERVICE ROAD - STORM CONNECTION
1:50



CROSS SECTION 2-2
SOUTH SERVICE ROAD - SANITARY CONNECTION
1:50



CROSS SECTION 3-3
SOUTH SERVICE ROAD - WATER CONNECTION
1:50



SITE PLAN No. 3592-OPS
BEARINGS SHOWN HEREON ARE GRID BEARINGS AND ARE DERIVED FROM OBSERVED REFERENCE POINTS A AND B HAVING A BEARING OF N37°35'55"E BY REAL TIME NETWORK(RTN) OBSERVATION. UTM ZONE 17, CENTRAL MERIDIAN 81° 00' WEST LONGITUDE. (3° MODIFIED TRANSVERSE MERCATOR PROJECTION, NAD 83 (CSRS-2010))

POINT	NORTHING	EASTING
A	4824807.213	613183.946
B	4824806.983	613229.664
C	4824802.548	613224.805
D	4824938.928	613177.338

ELEVATIONS SHOWN HEREON ARE GEODETIC AND ARE REFERRED TO CITY OF MISSISSAUGA BENCH MARK NO. BM350, HAVING AN ELEVATION = 97.563 metres.
ALL DIMENSIONS AND ELEVATIONS ARE IN METRES UNLESS OTHERWISE NOTED.
PIPE SIZES ARE IN MILLIMETRES.

1	ZBA SUBMISSION	A.S.	OCT. 2022	M.M.
No.	REVISIONS	BY	DATE	APPR.
ALL PREVIOUS ISSUES OF THIS DRAWING ARE SUPERSEDED				

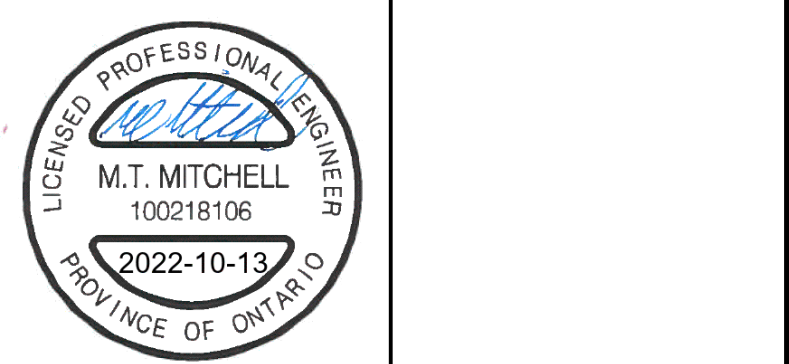
CLIENT
**Edenshaw SSR
Developments Limited**

MUNICIPALITY
**MISSISSAUGA
Transportation and Works**

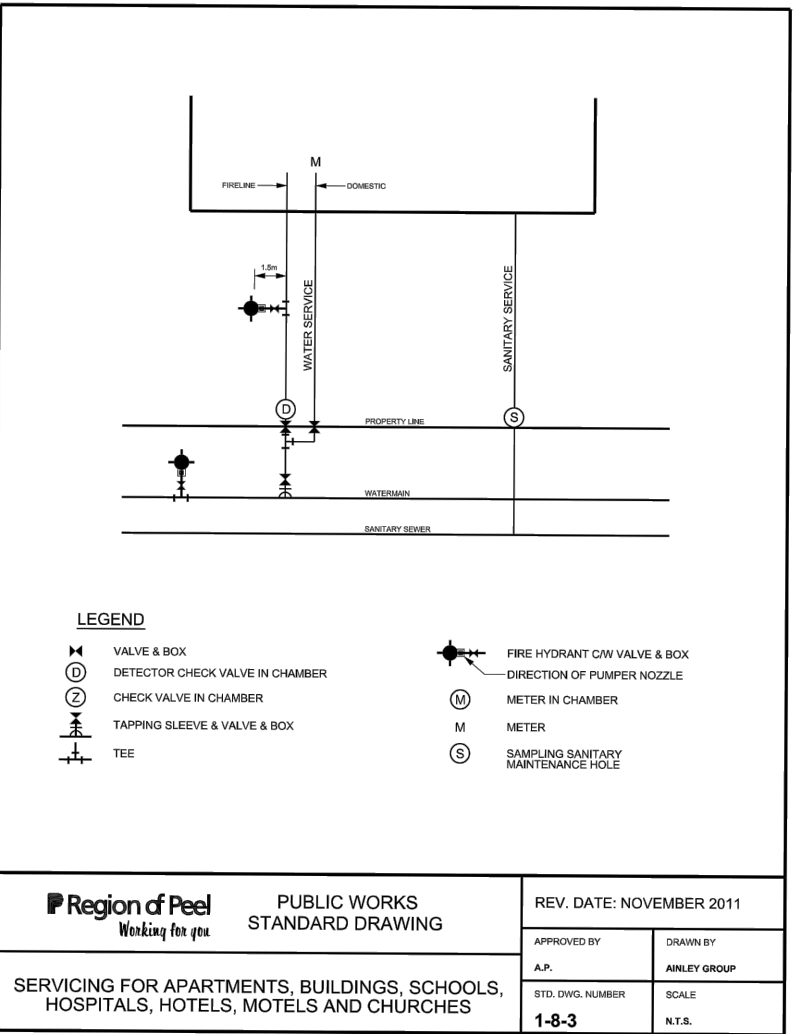
PROJECT TITLE
49 SOUTH SERVICE ROAD

SHEET TITLE
**SERVICING CROSS
SECTIONS**

CONSULTANT
wsp



DESIGNED M.M.	DRAWN A.S.	CHECKED A.W.
SCALE 1:50	DATE OCT. 2022	
PROJECT NUMBER 221-08605	DWG. NUMBER SEC1	



PROPOSED UTILITY DESIGN IS PRELIMINARY AND SUBJECT TO CHANGE DURING DETAILED DESIGN PHASE OF THE PROJECT

SERVICES OTHER THAN WATER, SANITARY, AND STORM HAVE NOT BEEN DESIGNED AND HAVE NOT BEEN INCLUDED ON THIS PLAN

CONTRACTOR TO CONFIRM DEPTH OF EXISTING UNDERGROUND INFRASTRUCTURE PRIOR TO CONSTRUCTION

EXISTING UTILITY INFORMATION IS FROM SUE INVESTIGATION BY T2 UTILITY ENGINEERS DATED SEPTEMBER 14, 2022 & TOPOGRAPHIC SURVEY BY R. AVIS SURVEYING INC., DATED JULY 13, 2022