

NTS

**NOTES:**

- The sump is measured from the lowest invert.
- A concrete sump shall be placed to a minimum dimension of 300mm all around the base.
- Precast concrete components shall be according to OPSD 701.030, 701.031, or 701.032.
- Structure exceeding 5.0m in depth and include tie-backing and pile spacing details.
- Flow support according to OPSD 708.020.
- For beaching and pile spacing details.
- For consolidation unit and frame installation.
- See OPSD 704.010.
- All dimensions are nominal.
- All dimensions are in millimetres unless otherwise shown.

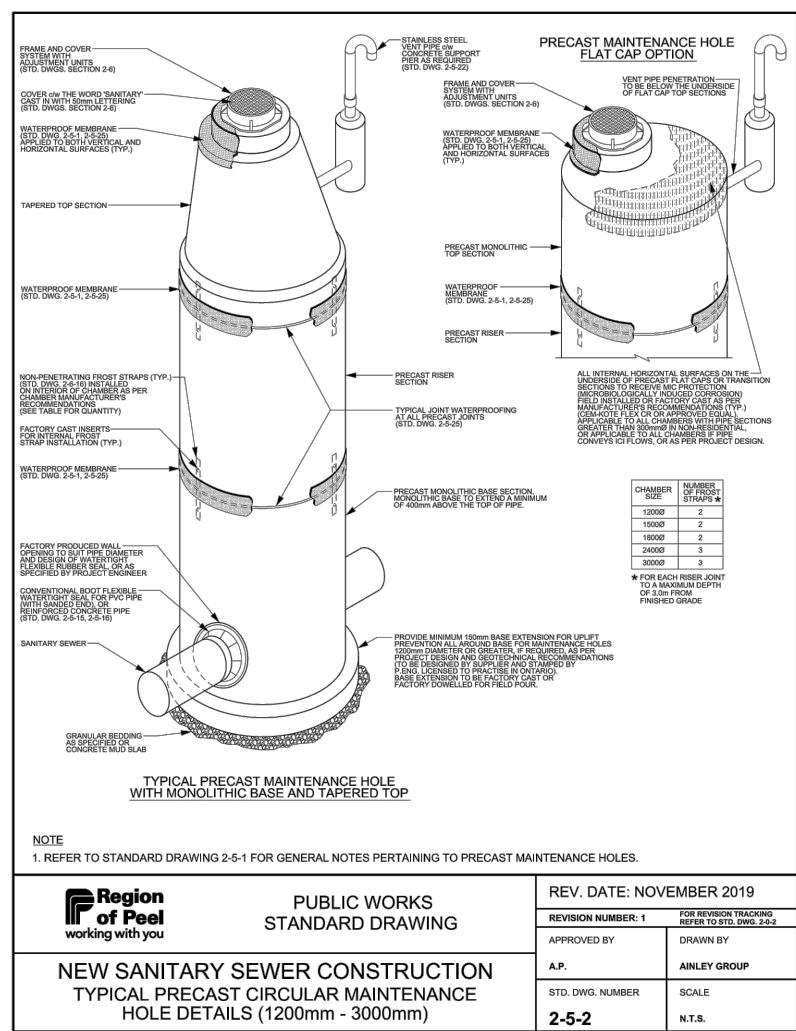
**ONTARIO PROVISIONAL STANDARD DRAWING**

**PRECAST CONCRETE MAINTENANCE HOLE**

**1200mm DIAMETER**

**OPSD 701.010**

**Nov 2014** **Rev 3**



POINT	NORTHING	EASTING
A	4824807.213	613183.946
B	4824866.583	613229.664
C	4824892.548	613224.805
D	4824938.928	613177.338


1	ZBA SUBMISSION	A.S.	OCT. 2022	M.M.
No.	REVISIONS	BY	DATE	APPR.
ALL PREVIOUS ISSUES OF THIS DRAWING ARE SUPERSEDED				

ALL PREVIOUS ISSUES OF THIS DRAWING ARE SUPERSEDED

CLIENT **Edenshaw SCD**

Edenshaw SSR  
Developments Limited

MUNICIPALITY

 **MISSISSAUGA**  
Transportation and Works

PROJECT TITLE  
49 SOUTH SERVICE ROAD

SHEET TITLE

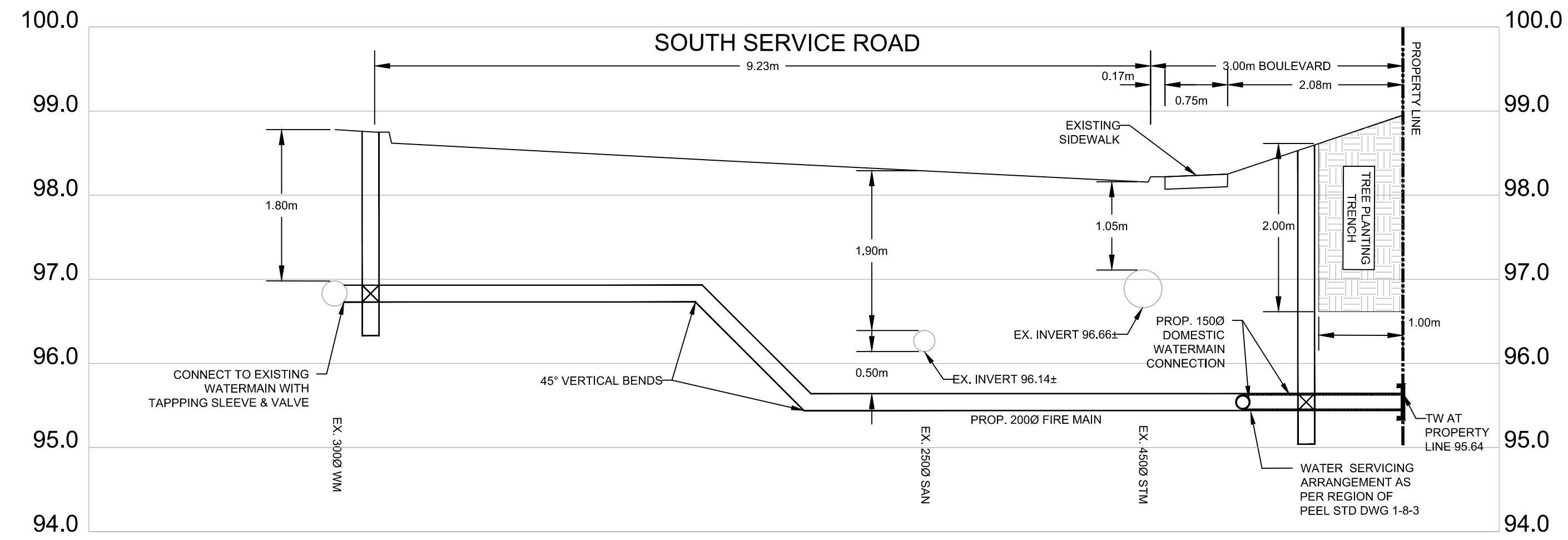
**STREETSCAPE FEASIBILITY  
STUDY - CROSS SECTIONS**

CONSULTANT

**WSP**



DESIGNED M.M.	DRAWN A.S.	CHECKED A.W.
SCALE 1:50	DATE OCT. 2022	
PROJECT NUMBER 221-08605	DWG. NUMBER STRTSCP2	

[illegible]

SERVICES OTHER THAN WATER,  
SANITARY, AND STORM HAVE NOT BEEN  
DESIGNED AND HAVE NOT BEEN  
INCLUDED ON THIS PLAN

EXISTING UTILITY INFORMATION IS  
FROM SUE INVESTIGATION BY T2  
UTILITY ENGINEERS DATED SEPTEMBER  
14, 2022 & TOPOGRAPHIC SURVEY BY R.  
AVIS SURVEYING INC., DATED JULY 13,  
2022