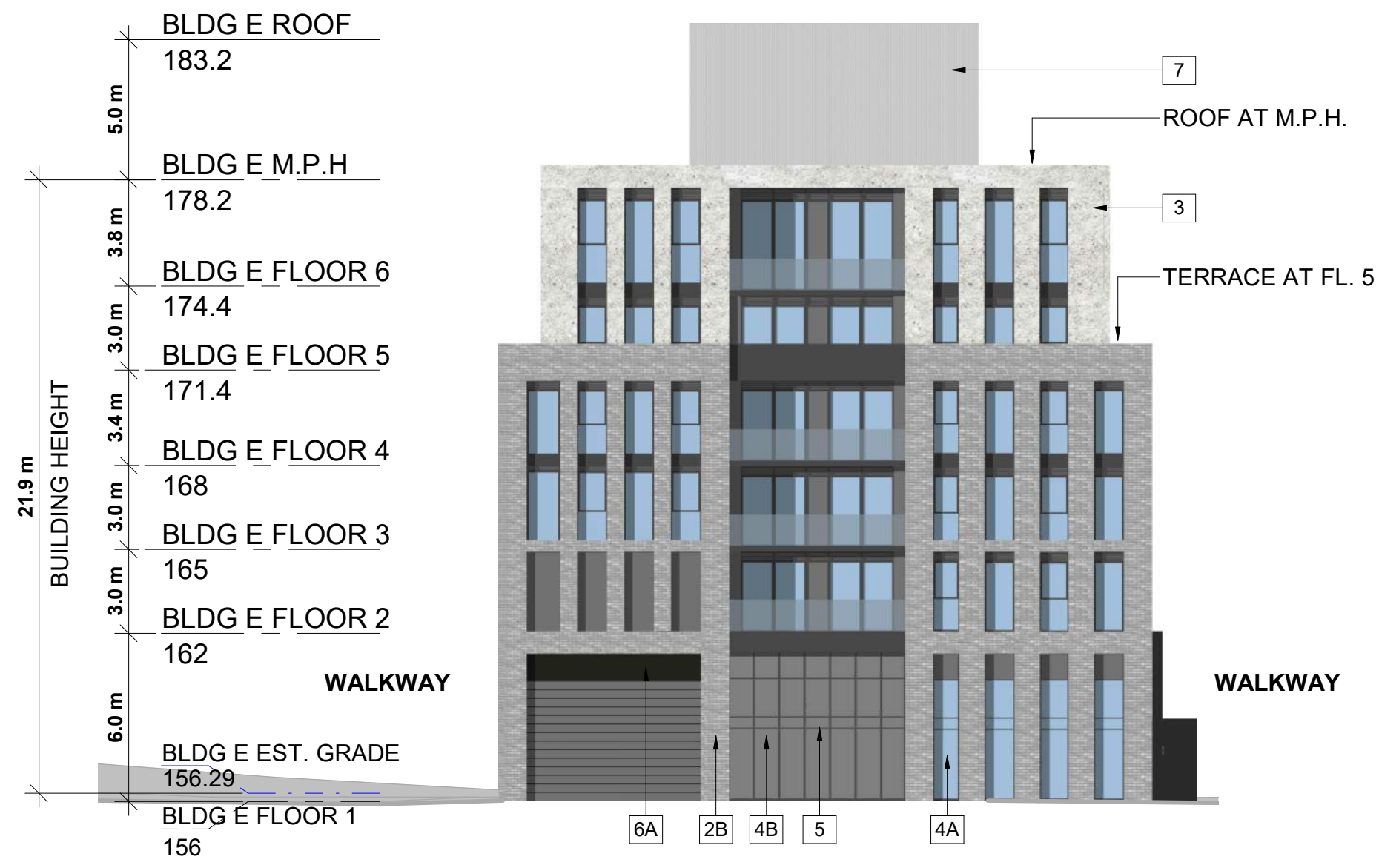


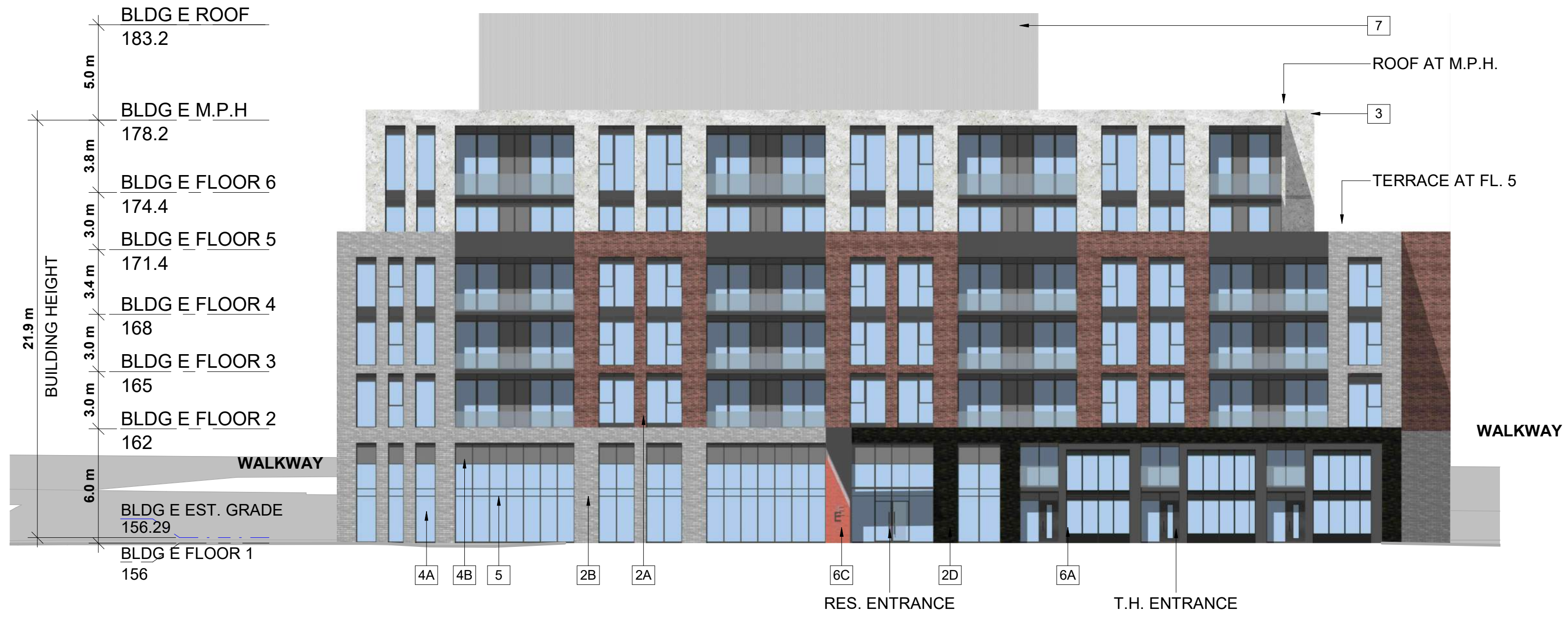
This drawing, as an instrument of service, is provided by and is the property of Turner Fleischer Architects Inc. The contractor must verify and accept responsibility for all dimensions and conditions on site and must notify Turner Fleischer Architects Inc. of any variations from the supplied information. This drawing is not to be scaled. The architect is not responsible for the accuracy of survey, structural, mechanical, electrical, etc. information shown on this drawing. Refer to the appropriate consultant drawings before proceeding with the work. Contractor must conform to all applicable codes and requirements of authority having jurisdiction. The contractor working from drawings not specifically marked 'for Contractor' must assume full responsibility and bear costs for any corrections or damages resulting from his work.

EXTERIOR FINISH LEGEND

| | |
|----|-----------------------------|
| 1 | STONE - LIGHT GREY |
| 2A | BRICK - LIGHT BROWN |
| 2B | BRICK - DARK GREY |
| 2C | BRICK - LIGHT BEIGE |
| 2D | BRICK - BLACK |
| 3 | PRECAST CONCRETE - WHITE |
| 4A | CLEAR GLAZING |
| 4B | SPENDRAL GLASS - GREY |
| 5 | ALLUMINIUM MULLIONS - BLACK |
| 6A | METAL PANEL - DARK GREY |
| 6B | METAL PANEL - LIGHT BEIGE |
| 6C | METAL PANEL - RED |
| 7 | STUCCO - LIGHT GREY |
| 7A | STUCCO - DARK GREY |



1 BLDG E WEST ELEVATION
SPA315 1 : 200



4 BLDG E SOUTH ELEVATION
SPA315 1 : 200



2 BLDG E EAST ELEVATION
SPA315 1 : 200



3 BLDG E NORTH ELEVATION
SPA315 1 : 200

| # | DATE | DESCRIPTION | BY |
|---|------------|---------------------------------------|-----|
| 1 | 2022-08-22 | OFFICIAL PLAN AND REZONING SUBMISSION | AYU |

PROJECT
4099 Erin Mills Parkway, Mississauga,
ON

DRAWING
BUILDING ELEVATIONS 'E'

PROJECT NO.
19.001
PROJECT DATE
2022-08-26
DRAWN BY
OKL
CHECKED BY
AYU
SCALE
As indicated



DRAWING NO. SPA315 REV. 1