

CLIENT
QUEENCORP ERIN MILLS L.P.

COPYRIGHT
 This drawing has been prepared solely for the intended use. Any reproduction or distribution for any other use without the written consent of IBI Group is prohibited. IBI Group and its employees shall not be held liable for any errors or omissions in this drawing, and the user shall be responsible for verifying the accuracy of the information provided. IBI Group shall not be held liable for any damages, including consequential damages, arising from the use of this drawing.

IBI Group Professional Services (Canada) Inc.
 a member of the IBI Group of Companies

ISSUES	NO.	DESCRIPTION	DATE
	1.	ISSUE FOR 20A	JULY 22, 2022
	2.		
	3.		
	4.		

LEGEND

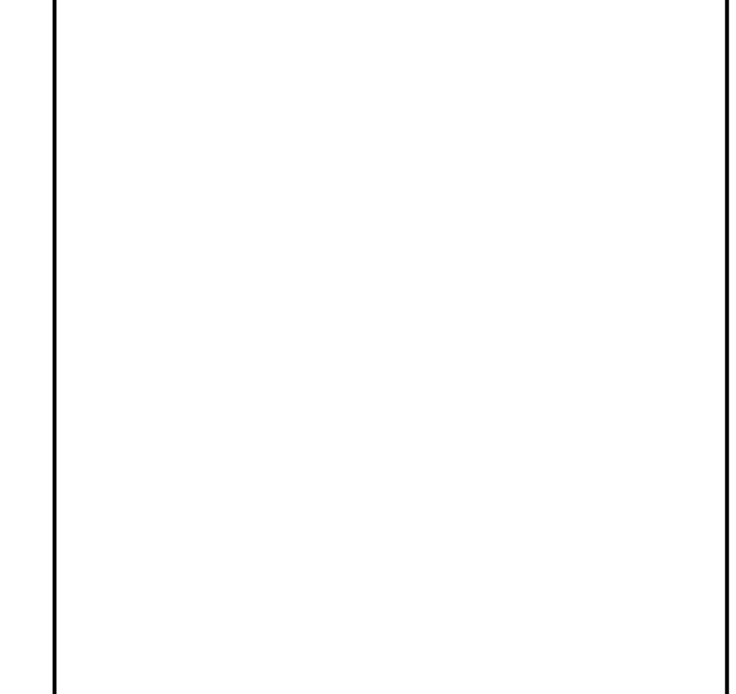
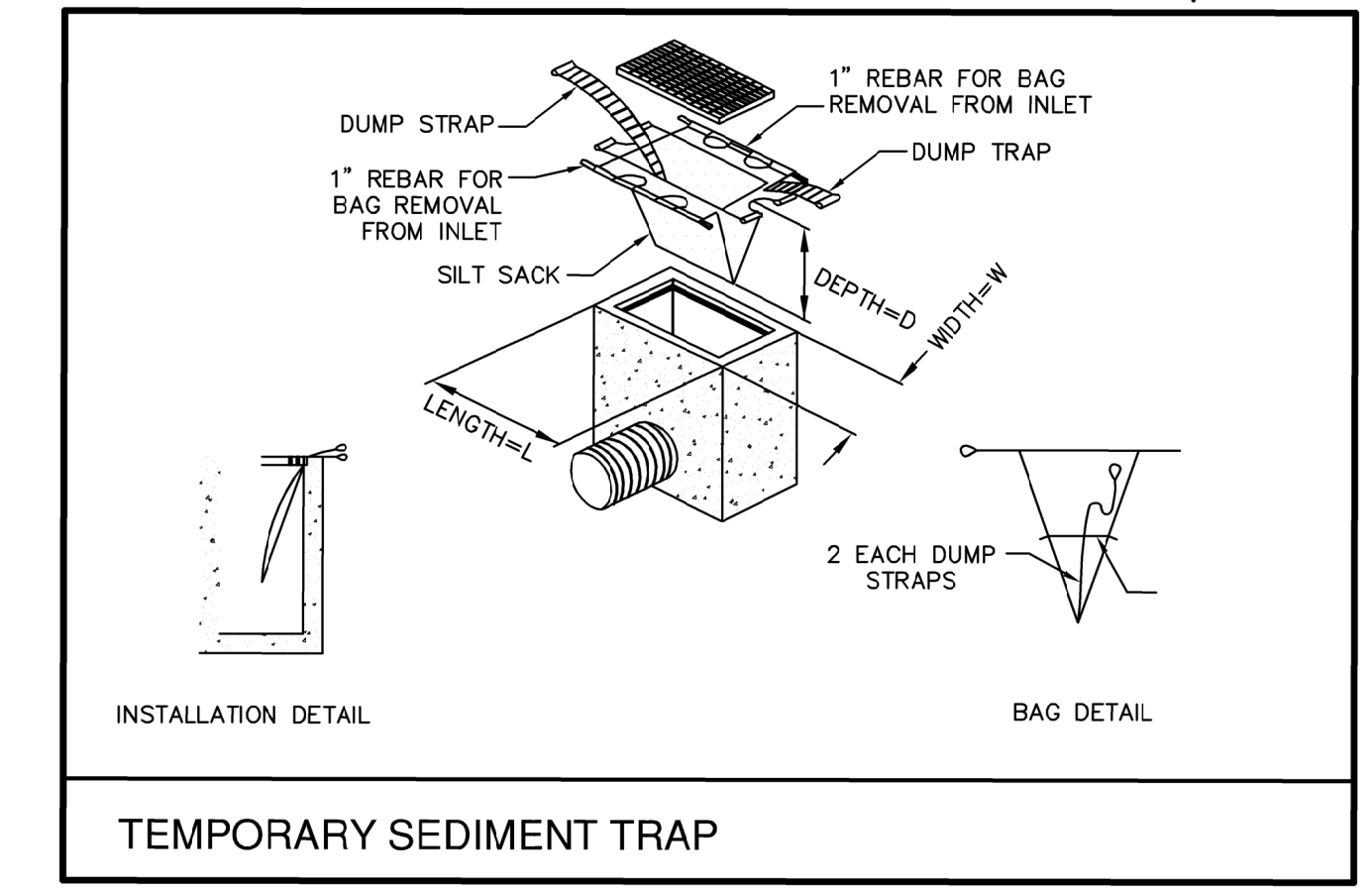
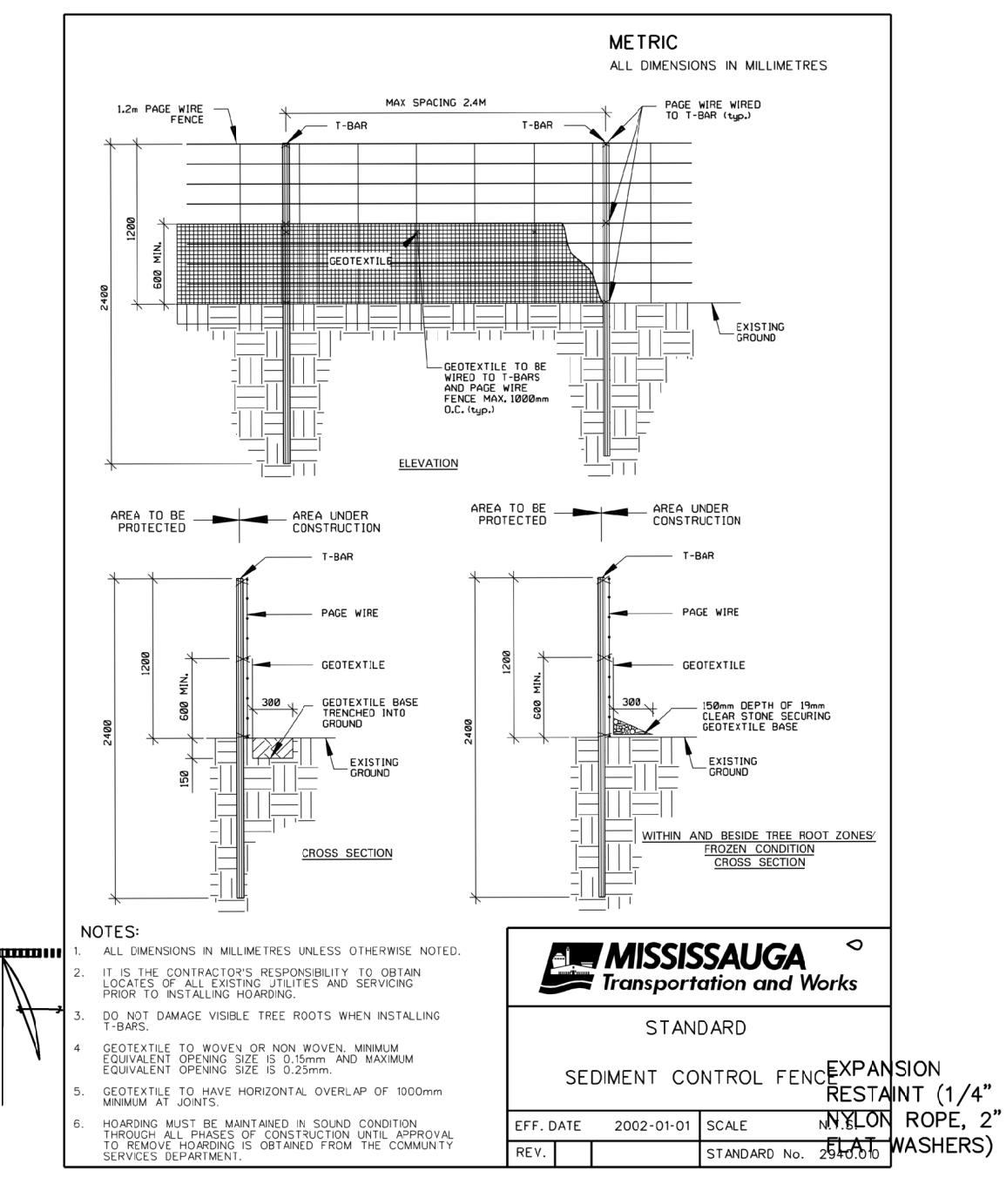
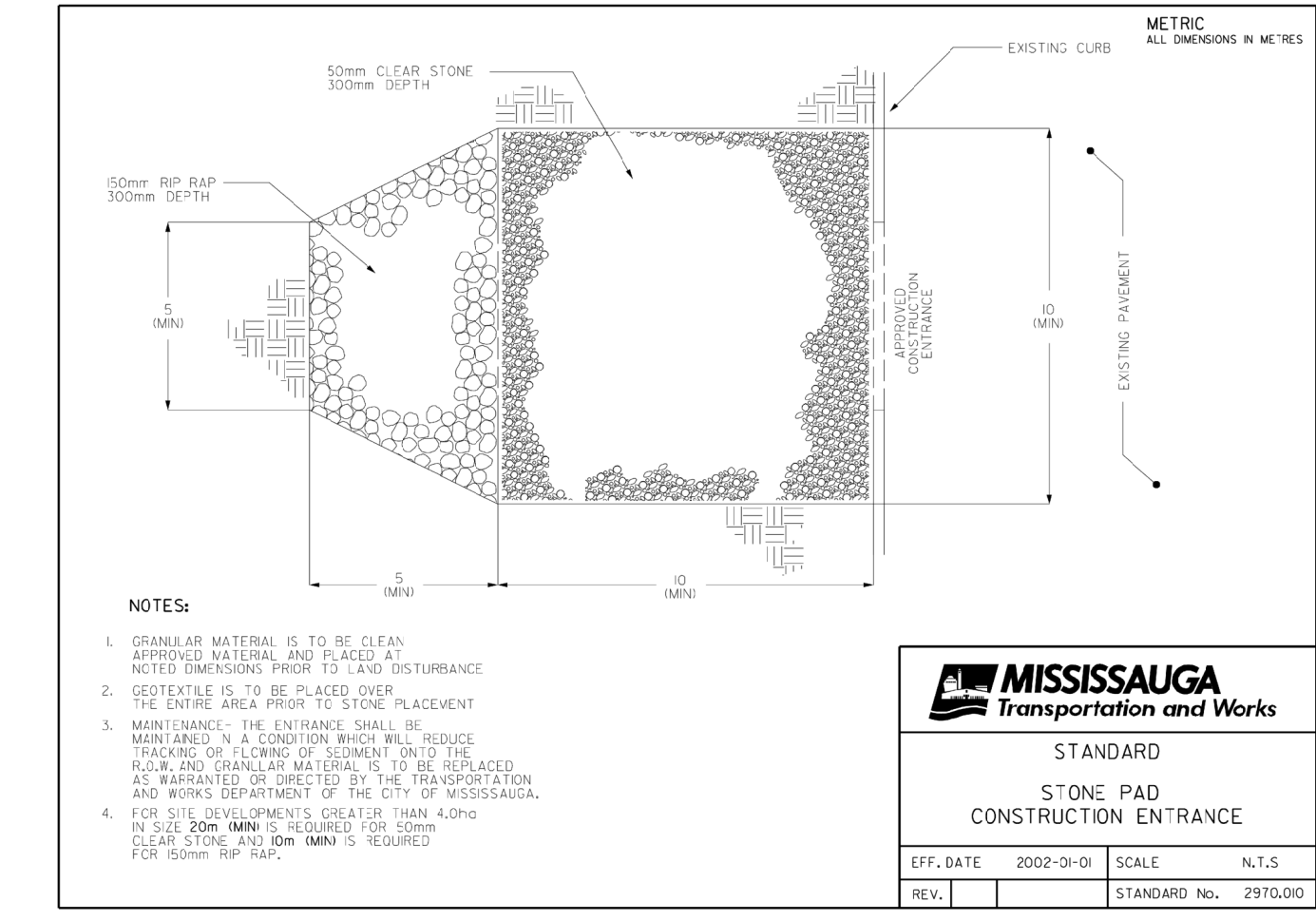
PROPERTY LINE ———

CONTROL FENCE TEMPORARY ———

TEMPORARY SEDIMENT TRAP [Symbol]

CONSTRUCTION ACCESS TEMPORARY [Symbol]

TEMPORARY GRAVEL MUD MAT [Symbol]



IBI GROUP
 Unit 300 - 8133 Warden Avenue
 Markham, ON L3R 9V6, Canada
 Tel: 905 763 2322 Fax: 905 763 9983
 ibigroup.com

PROJECT
4099 ERIN MILL PKWY
 CITY OF MISSISSAUGA

PROJECT NO:
137429

DRAWN BY:
ST

PROJECT MGR:
NG

CHECKED BY:
NDS

APPROVED BY:
NG

SHEET TITLE
EROSION AND SEDIMENT CONTROL PLAN

SHEET NUMBER
ESC-01

ISSUE
01

EROSION AND SEDIMENT CONTROL / GENERAL NOTES:

1. SEDIMENT BARRIER AND TEMPORARY CONSTRUCTION ACCESS TO BE INSTALLED PRIOR TO THE BEGINNING OF THE CONSTRUCTION.
2. ALL SEDIMENT CONTROL DEVICES TO BE ROUTINELY INSPECTED AND MAINTAINED IN PROPER WORKING ORDER UNTIL THE AREA IS STABILIZED.
3. IF NECESSARY, TRUCKS WILL BE WASHED DOWN BEFORE LEAVING THE SITE.
4. THE SITE WILL BE WET DOWN IF NECESSARY TO CONTROL DUST.
5. ALL CONSTRUCTION EQUIPMENT MUST BE PARKED ON SITE.
6. WILL COMPLY WITH CITY OF TORONTO NOISE BY-LAW.
7. SEDIMENT CONTROL FENCE TO BE AS PER CITY OF TORONTO STANDARD T-219-100-1 AND TO BE INSTALLED AROUND THE ENTIRE SITE.
8. ALL CONSTRUCTION VEHICLES TO BE SURROUNDED WITH SEDIMENT CONTROL FENCING. STOCKPILED MATERIALS WHICH WILL NOT BE USED WITHIN TWO WEEKS MUST BE STABILIZED USING ONE OR MORE OF THE FOLLOWING METHODS: TEMPORARY SEEDING (1 YEAR OR LESS), TRAP OR OTHER DURABLE COVERING, OR ANCHORED STRAW OR MULCH.

11. FILTER FABRIC TO BE PLACED UNDER GRATES ON ALL CATCHBASINS TO TRAP SEDIMENT. SILT TRAPS ARE TO BE CLEANED REGULARLY AND ARE NOT TO BE REMOVED UNTIL SUCH TIME AS THE CURBS ARE CONSTRUCTED AND THE BOLLIVARDS ARE BODDED OR BACKWARDS GRADED AND BODDED. FILTER FABRIC FOR SILT CONTROL TO BE TEMPORARY OR APPROVED EQUIVALENT.
12. STREET SWEEPING, CATCH-BASIN CLEANING AND DUST CONTROL ARE THE RESPONSIBILITY OF THE DEVELOPER AND MUST BE KEPT UNDER CONTROL ON ALL ROADWAYS TO THE SATISFACTION OF THE CITY.
13. THE CONTRACTOR WILL BE RESPONSIBLE FOR KEEPING THE MUNICIPAL ROADWAY CLEAN AND WILL WASH AND SWEEP THE ROADWAY AS REQUIRED.
14. FILTER CLOTH AND 150mm OF 19mm CRUSHED STONE WILL BE PLACED ON ALL CATCHBASINS FOR SEDIMENT PROTECTION DURING CONSTRUCTION. FILTER CLOTH WILL BE PLACED ON THE CATCHBASINS ON THE PUBLIC STREETS ACROSS THE PROPERTY'S FRONTAGE.
15. THE SILT FENCE WILL BE INSTALLED IN ACCORDANCE WITH CITY REQUIREMENTS FOR AN EROSION CONTROL FENCE.
16. IN THE CASE OF ANY CONFLICT WITH ANOTHER PLAN, THIS PLAN PREVAILS ONLY IN RESPECT TO CONSTRUCTION MEASURES AND ACTIVITIES SUCH AS THE CONSTRUCTION ACCESS, SILT FENCE, SECURITY FENCE, SEDIMENT CONTROL, AND MUD MATS.

NOTES:

1. INSTALL TEMPORARY CATCHBASIN SEDIMENT TRAP ON EX. CATCHBASINS

LIST OF DRAWINGS	SURVEY INFORMATION
ES-01 SITE SERVICES PLAN	J.D. BARNES LTD.
ES-02 SITE GRADING PLAN	475 BRIMLEY AVENUE, SUITE A
ES-03 EROSION AND SEDIMENT CONTROL PLAN	MILTON, ONTARIO L7L 1C1
ES-04 CROSS SECTIONS	PHONE: 905-881-8888
ES-05 GENERAL NOTES AND DETAILS	FAX: 905-881-8888

BENCHMARK INFORMATION:
 ELEVATIONS ARE QUASITIC AND ARE DERIVED FROM CITY OF MISSISSAUGA BENCHMARKS IN THE HORIZONTAL ALIGNMENT TO THE METRE.
 BENCHMARK NO. 35 SHOWN AN ELEVATION OF 102.761 METRES.

SCALE: 1:300

File Location: J:\137429_4099ErinMills\137429_Site\ESC-01.dwg, Last Saved: July 22, 2022 by: NG, Printed: Friday, July 22, 2022 1:07:12 PM by: NG