

William Prince with Le Ren

November 22, 2022 - 8:00 p.m.

RBC Theatre



PERFORMANCE NOTES

7:30 p.m.: Theatre doors open
8:00 p.m.: Le Ren, 30 minutes
8:30 p.m.: Intermission, 30 minutes
9:00 p.m.: William Prince, 90 minutes

**times are approximate*

Photo & video is permitted, however no professional cameras/lenses and no flash.

Late arrivals will be seated between songs.

Merchandise available in the Atrium.

Lobby bar will be open from 7:00 p.m. until after the intermission.



livingartscentre.ca



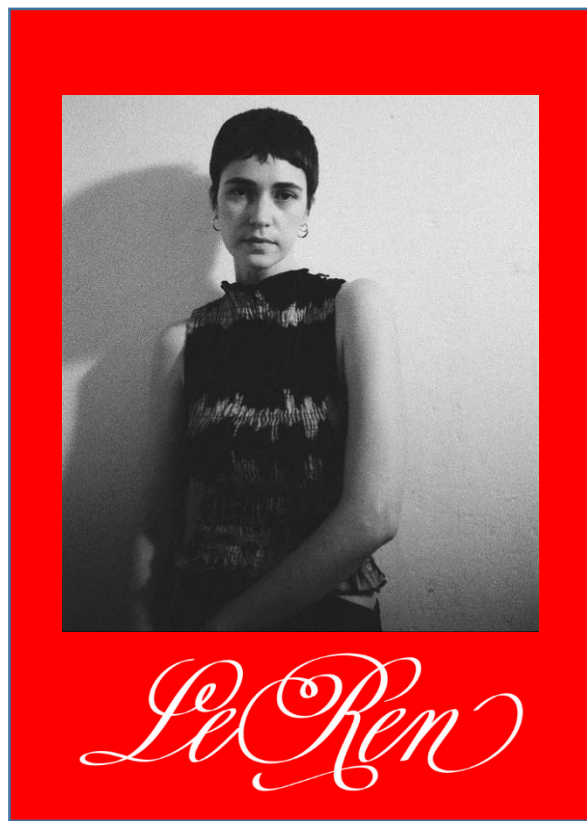


William Prince approaches the big questions with humility and curiosity. Prince’s influences and references span the pantheon of classic outlaw country singers, baseball, and the great beyond, all of which shape his approach to song craft and offer a masterclass in skilful simplicity.

Prince’s JUNO Award winning debut *Earthly Days* introduced the songwriter’s poignant philosophy and rich baritone to the world. His breakout song “Breathless,” found audiences worldwide. Prince followed up with *Reliever*, released February 2020. For this album, Prince began with a single word, *Reliever*, which informed a collection of that explored how peace is found. Prince surprised fans with a second new album in 2020. *Gospel First Nation*, released in October, is a “21st Century Northern Interlake Country Gospel” collection that tells stories of family and faith in the age of grief. The album explores Prince’s own family tree, the places and music that shaped his childhood, and explores the extremely complicated relationship of faith and colonialism with grace and empathy.

Prince’s momentum has continued to build, with each new album adding depth and dimension to an exceptional body of work that has received international acclaim. From national network television appearances, top tier media coverage including NPR Tiny Desk, LA Times and Rolling Stone, and high-profile performances at major international festivals, William Prince has become one of today’s most respected and celebrated songwriters.

williamprincemusic.com



Le Ren's close-to-the-bone, heartbreak folk songs seem, at first, to tap into a shared musical memory. A melody swirls forward and you're just sure it's known to the back of your mind; was it in a movie you saw, some classic mid-60s set piece? Maybe it's something you heard as a kid, in the backseat of your mom's Cutlass, or the shotgun seat of your own. But before you can zero in through the fog, your heart is torn apart by her voice — rich, direct and mellifluous — steering you through these slowburn tunes about real-life loss.

Lauren Spear, the artist behind Le Ren, created a physical quilt to mirror the assemblage of stories that comprise her album *Leftovers*: a coming-of-age collage that collects over four years of past experiences and finds their present meaning. "When I think of leftovers, I think of things that have been cast aside," she says. "When they're picked back up or remembered, they can be repurposed... *Leftovers* came to mean a collection of feelings and moments of the past that still remain relevant to my present."

Join saugaLIVE on social media!

Stay connected with the Living Arts Centre by scanning the QR code to sign up for our saugaLIVE e-news.



saugalive.ca

PATRON INFORMATION

GIFT CERTIFICATES

The perfect gift. Certificates are available in any denomination and can be redeemed for tickets to Living Arts Centre events.

Call 905-306-6000

THEATRE POLICIES

Food & Beverages:

Food and beverages are available prior to most shows and during intermission. Beverages, but not food, will be permitted inside the theatre. All beverages must be in a plastic cup/bottle. No outside food or beverages are permitted.

Babes In Arms:

Every person must have a ticket in order to be admitted to a performance. This policy applies to everyone, including children and infants.

Latecomers:

Will be seated at a suitable break in the performance. On-stage performances are shown on lobby monitors for the convenience of those waiting.

Cameras, Recording & Communication Devices:

Are prohibited inside the theatres for most shows. Professional equipment requires media approval. Cellular phones and electronic devices must be turned off.

There may be filming, photography and/or recordings at most events. By entering and by your presence, you consent to be photographed, filmed, and/or otherwise recorded. Please contact the Box Office or an Usher if you do not wish to be photographed or recorded.

Scent Advisory:

Please be considerate of those in the audience who have allergies and refrain from wearing cologne and perfume.

PATRON SERVICES

Booster Seats:

There are limited number of booster seats available for use and can be requested from an usher as you enter the theatre. Please note that these are in high demand during family shows, and are subject to availability.

Assistive Devices:

Hearing enhancement devices and wheelchairs are available. See Box Office or Usher staff.

Service Animals:

Service animals are welcome to enter the Living Arts Centre to accompany patrons with disabilities.



livingartscentre.ca

4141 Living Arts Drive
Mississauga, Ontario
L5B 4B8
Box Office: 905-306-6000

