

Dundas Corridor Policy Implementation

Dundas Street Corridor

Year 2011

24,000
jobs

39,000
people



Year 2031 (Forecast)

31,000*
jobs

57,000*
people

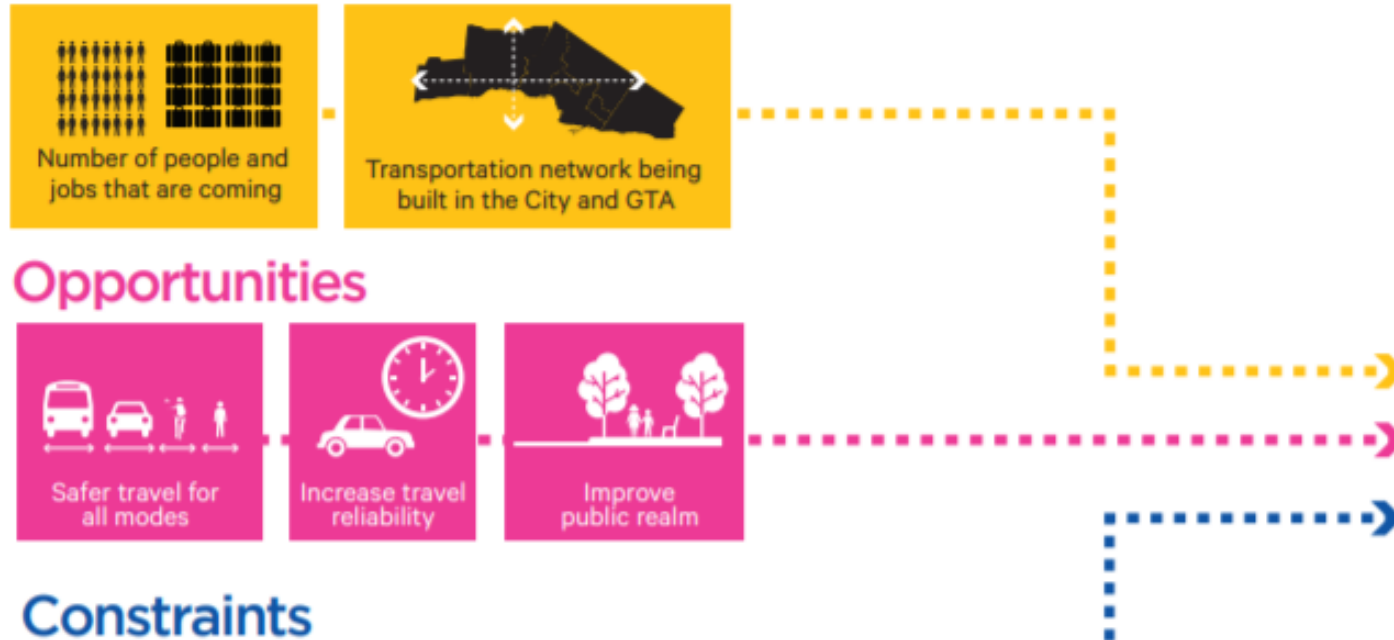
*At least this number



- Highway Expansion
- 407 Transitway Ninth Line Study
- Road Widening
- Mississauga Transitway
- Hurontario Light Rail Transit
- Dundas Connects
- Lakeshore Road Transportation Master Plan
- Regional Express Rail
- Finch West LRT
- Smart Track
- Subway
- Mobility Hub

Vision for Dundas Street – Dundas Connects

Growth



Dundas Connects Master Plan Key Recommendations



Transportation

- BRT Design
- Retain bus service
- Maintain 4 lanes

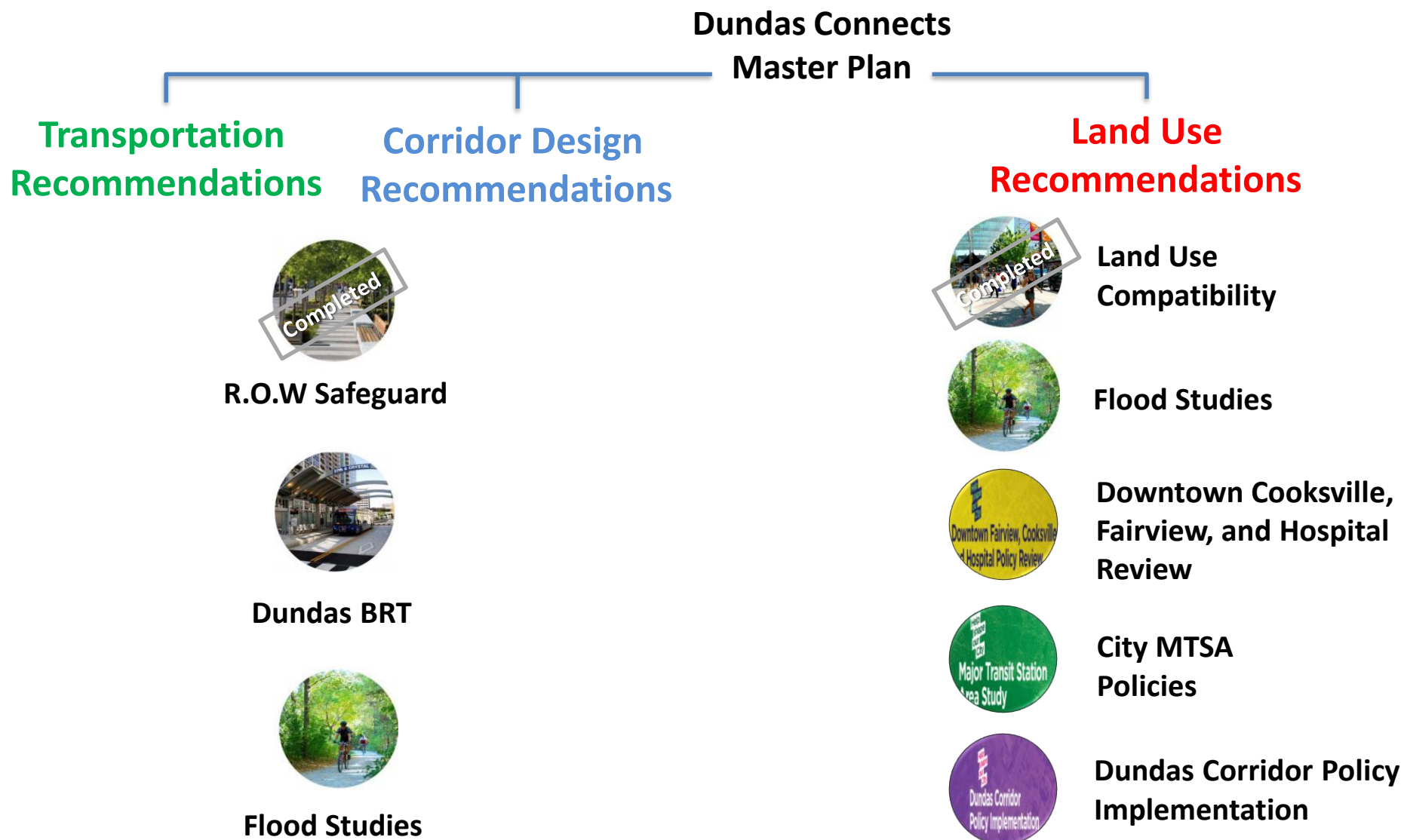
Corridor Design

- “Complete street”
- Protect cycle lanes
- Wider sidewalks
- Street trees

Land Use

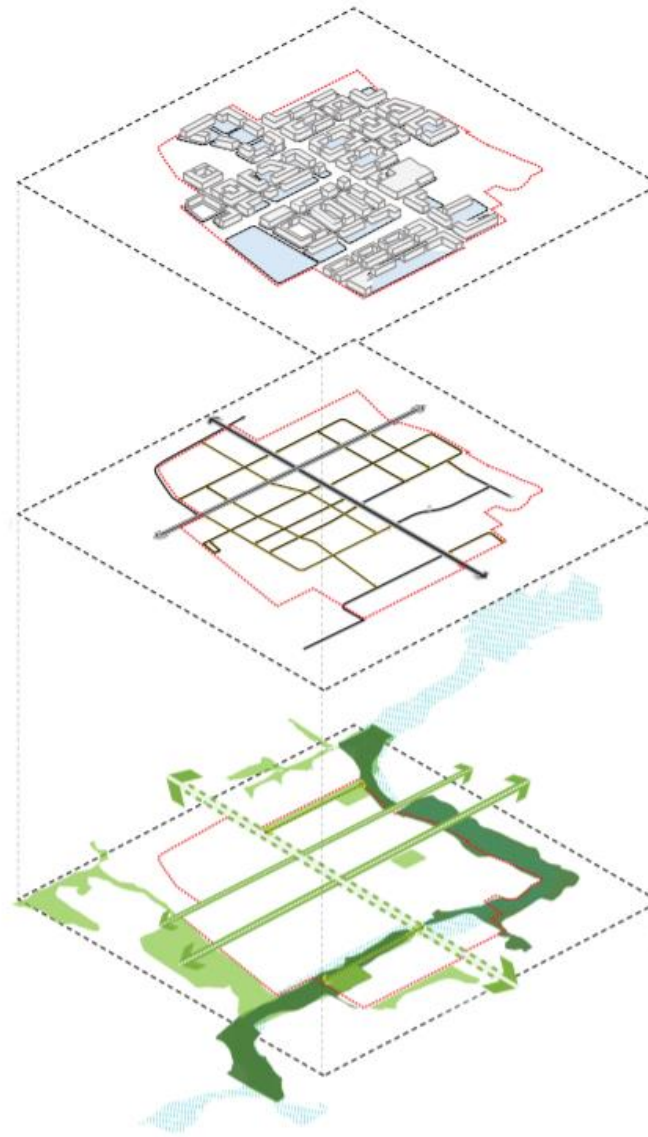
- More mixed uses
- Additional heights
- Urban design
- More open spaces

Parallel Projects - Realizing the Recommendations



Dundas Connects Implementation





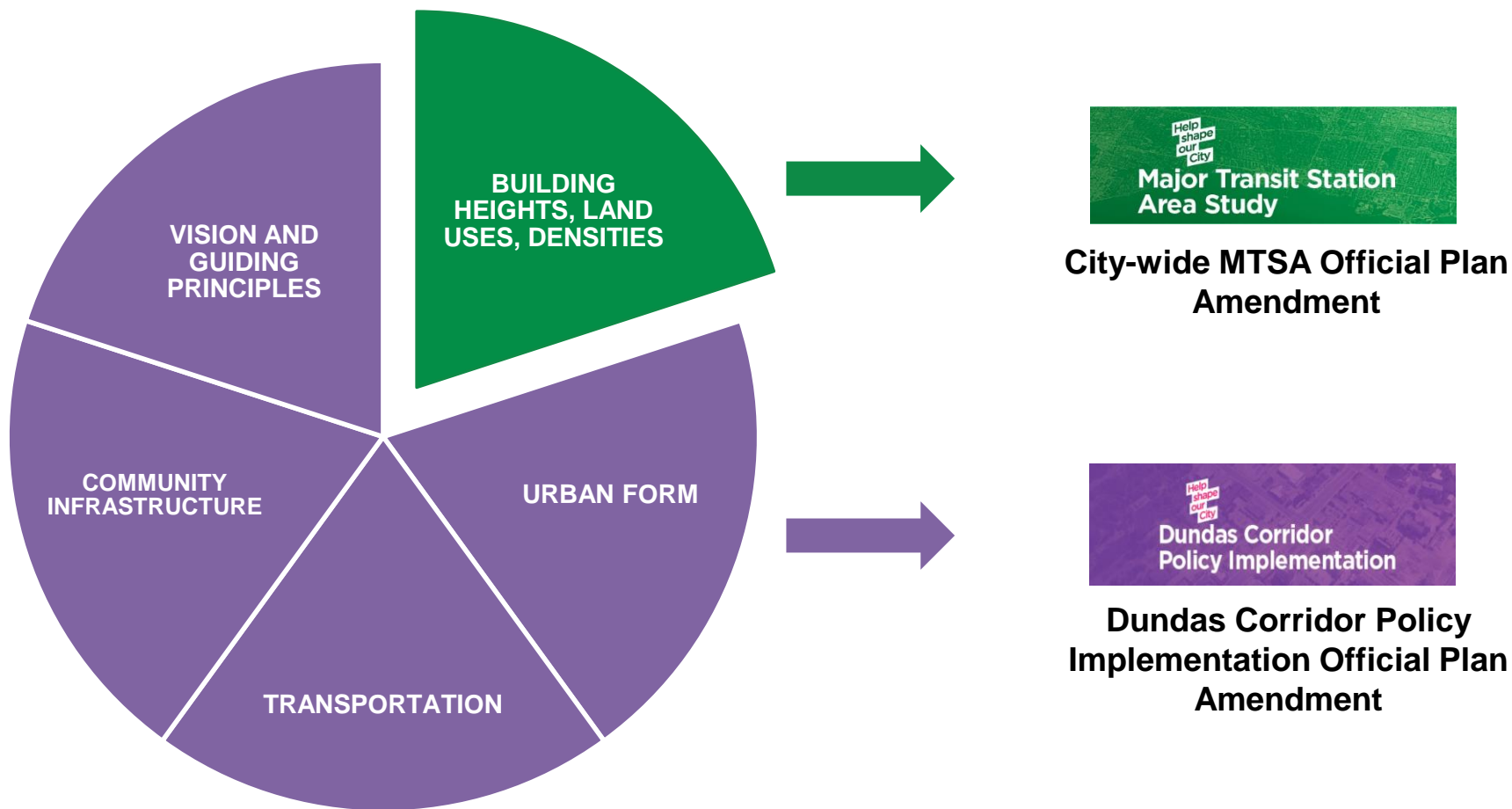
Land Uses,
Heights, and
Built Form

Street Network,
Blocks, and
Connectivity

Parks, and
Open Space
Network

Policy Implementation

Dundas Corridor Policy Implementation

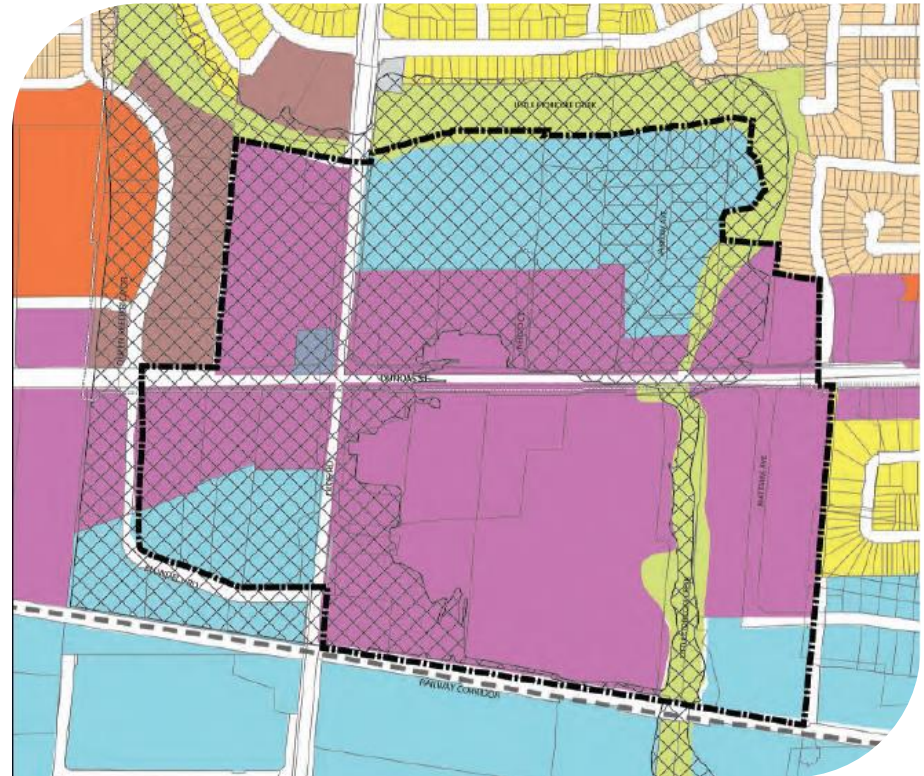


Key Policies – Community Node



New Community Node

- Delineate the Dixie-Dundas Community Node
- Proposed new heights and land use permissions
- Most development will be restricted by flood area, with underlying policies



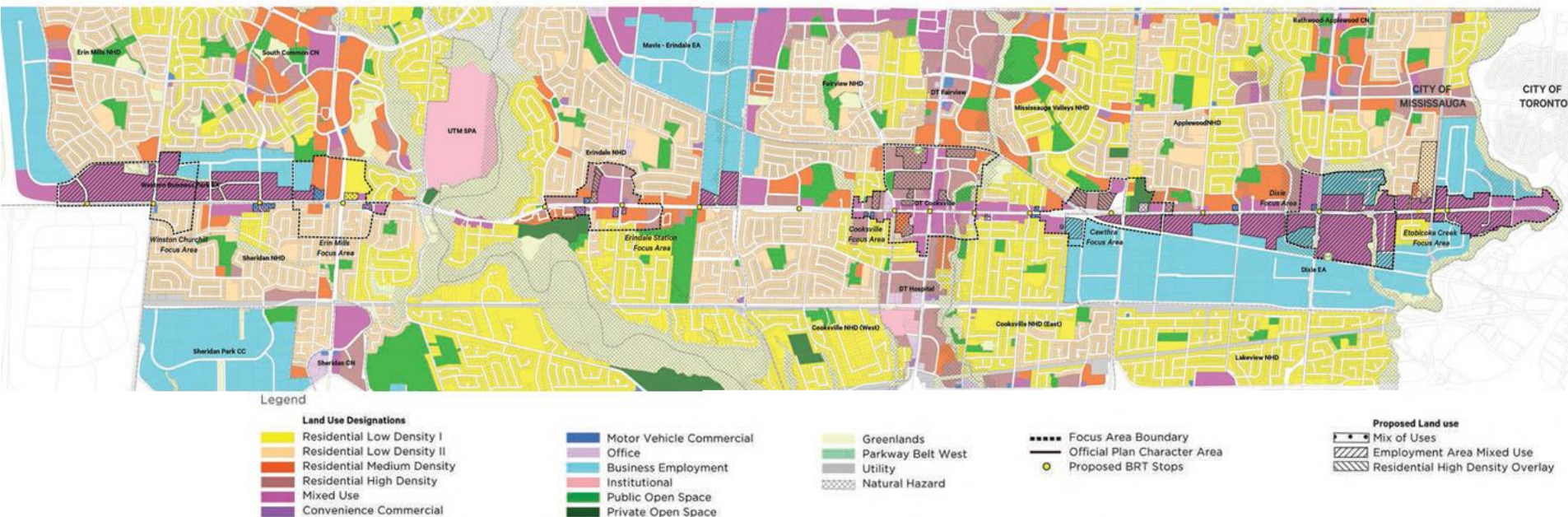
-  Hazard Lands
-  Community Node Boundary

Key Policies – Land Use



Land Uses

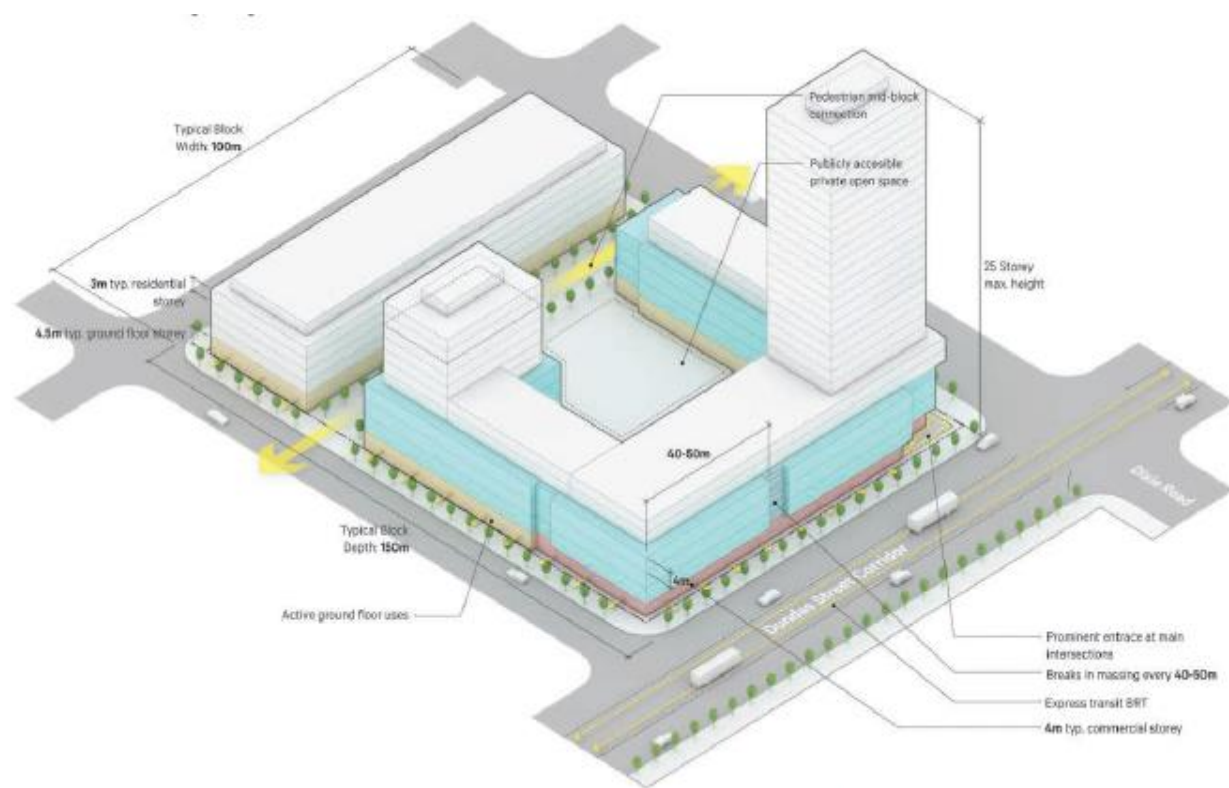
- Introduce additional Mixed Use land use designations
- Protect the planned function of employment areas
- Consider residential uses in Employment Areas, subject to a compatibility assessment
- Allow a range of housing options in underutilized high density residential areas





Built Form

- Promote active frontages adjacent to major corridors
- Require transitional built form adjacent to lower densities
- Establish setback and minimum separation policies



Key Implementing Policies



Public Realm

- Support the expansion of parks and public open spaces
- New parks and open spaces will serve new development the area The location of parks and open spaces will be proposed conceptually, and finalized as lands develop in the area



Key Implementing Policies

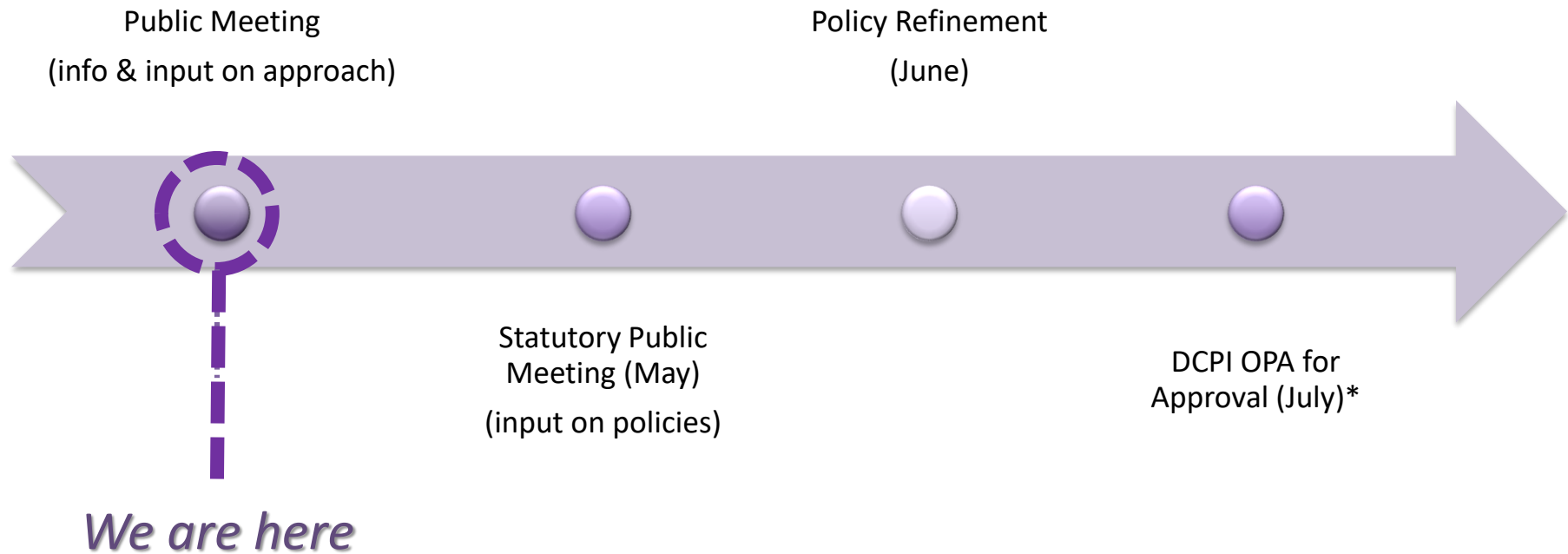


Increased Connectivity

- New policies encourage mid block connections to transit stations
- Multi modal access to transit stations will be required/encouraged
- Expand existing street network to provide connectivity to support growth



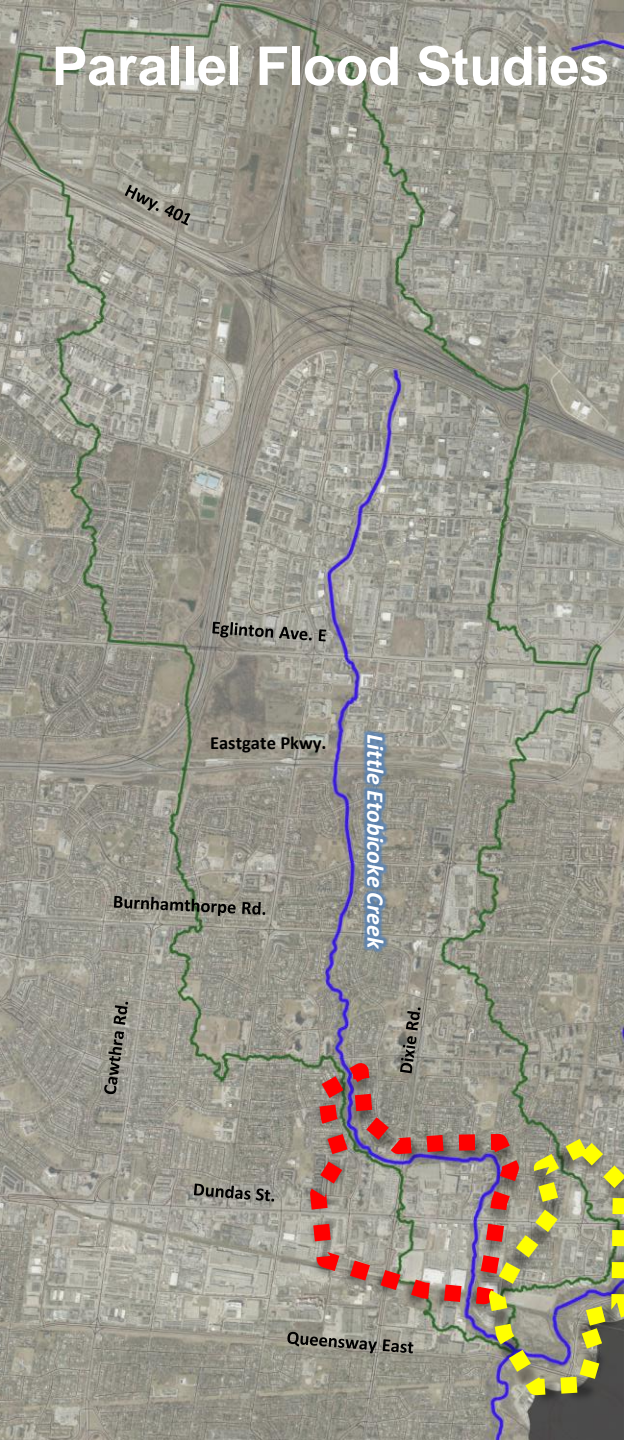
Next Steps



**Subject to Region's MTSA policies approval, will be presented concurrently with City's MTSA OPA*

Dundas Corridor Policy Implementation (Flood Areas and Employment Area Policies)

Parallel Flood Studies



Little Etobicoke Creek Flood Evaluation Study



Dixie-Dundas Flood Mitigation Study



Etobicoke Creek Preliminary Flood Mitigation Study

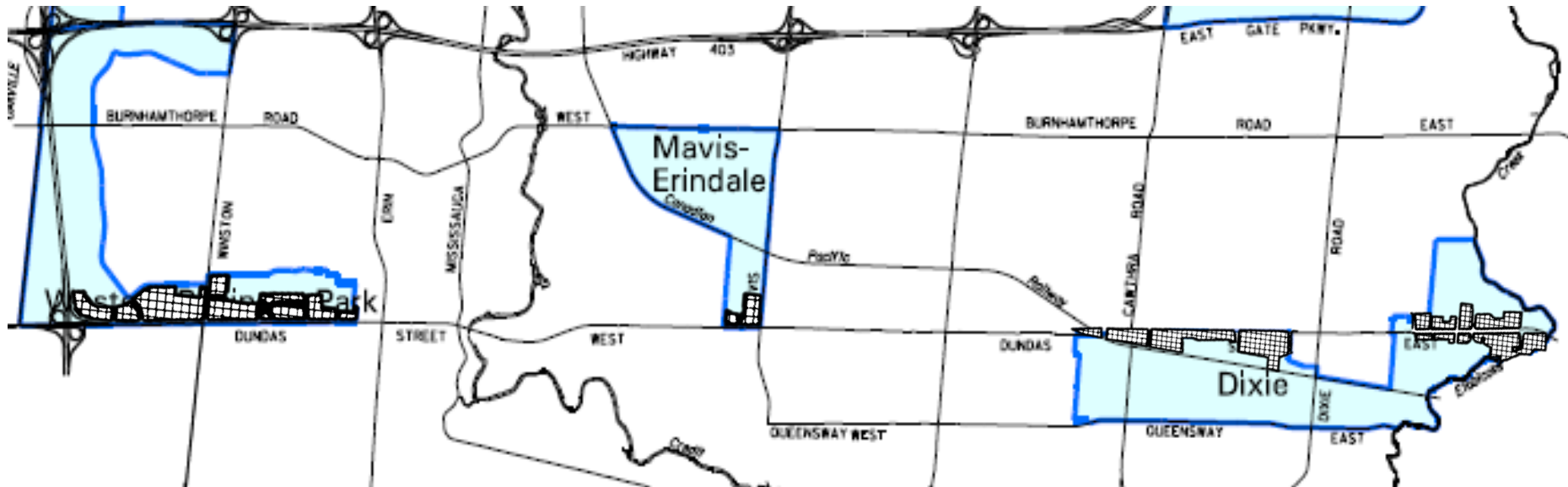
Current Flood Area Constraints



Current Flood Area Constraints



Sensitive Uses in Employment Areas



Land Use Compatibility Criteria

Identify context

- Locate site
- Identify Class type of surrounding employment uses

Determine Impact

- Determine area of influence based on class type
- Take into account employment area future operations

Carry out Studies

- Carry out the required studies
- May include noise, air, odour, and vibration



Further Information



**Dundas Corridor Policy
Implementation – Yoursay Page**



**City of Mississauga MTSA
Website**



For more information please contact Bashar Al-Hussaini

- bashar.al-hussaini@mississauga.ca

For more information please contact:

Matthew.Williams@Mississauga.ca



**Transit Project Assessment Process Study
for the Dundas BRT**

For more information please contact:

- Anthony DiGiandomenico
- Anthony.DiGiandomenico@mississauga.ca



**Dixie-Dundas Flood Mitigation
Study**

Thank You!