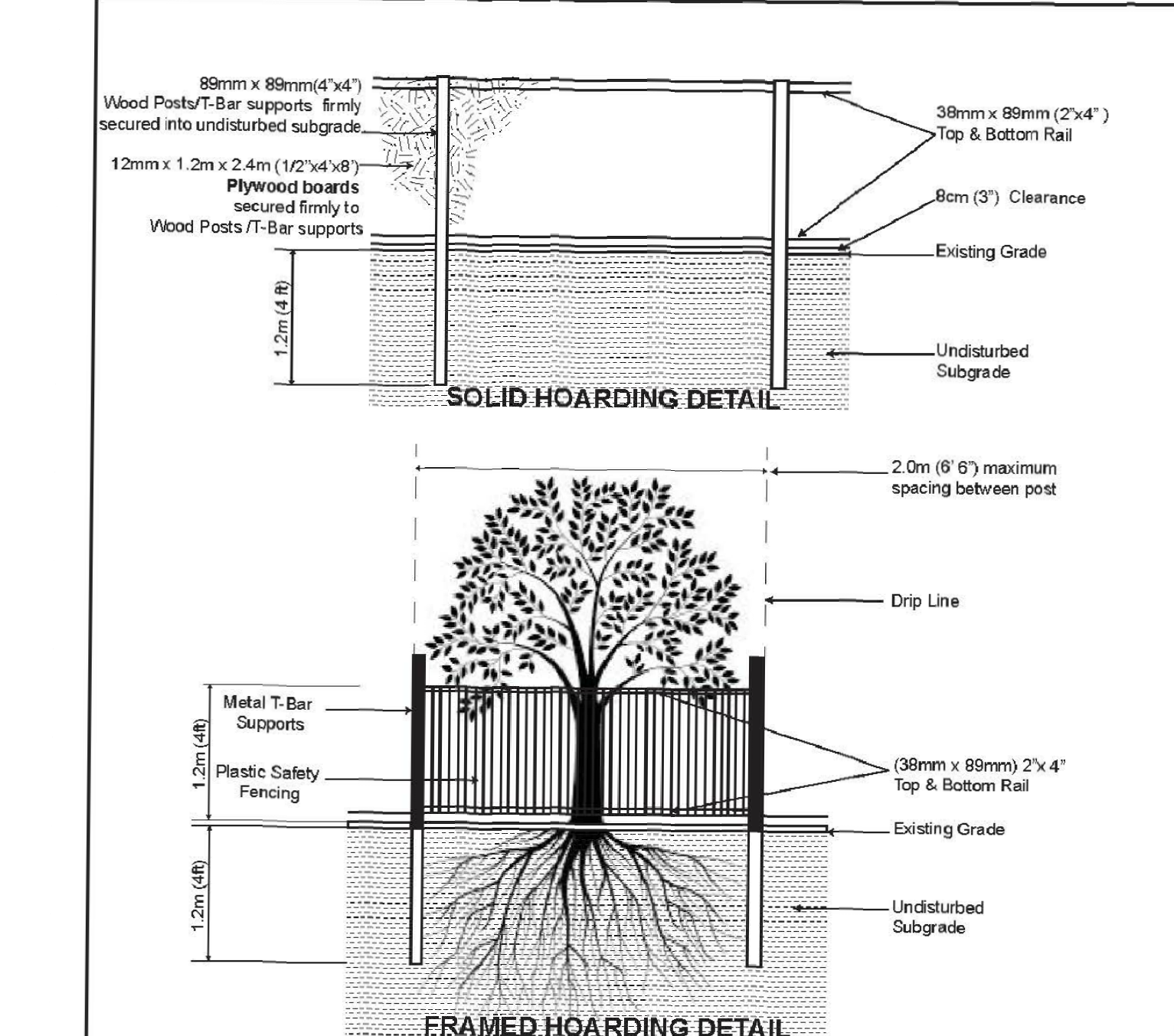


EXISTING TREE INVENTORY

KEY	SPECIES	CALIPER IN (cm)	CROWN IN (m)	HEALTH G/F/P	STRUCTURE	COMMENTS	PRESERVATION DIRECTION	MIN. TPZ	KEY
1	Linden	28.5	5.0	Poor	One sided form	60% dead, declining	REMOVE	1.8	1
2	Austrian Pine	33.0	7.0	Good	Double leader	Asymmetrical form	REMOVE	2.4	2
3	Honey locust	37.0	11.0	Fair	Asymmetrical form	Epicormic growth throughout	REMOVE	2.4	3
4	Honey locust	41.0	14.0	Good	Good form	Some epicormic growth on lower branches	REMOVE	3.0	4
5	Honey locust	35.0	13.0	Good	One sided form	Elavated crown, east side pruned due to hydro wires	REMOVE	2.4	5
6	Honey locust	31.5	10.0	Fair	Good form	Minor dieback in crown	REMOVE	2.4	6
7	Linden	41.0	6.0	Good	Double leader	Significant sucker growth at base	REMOVE	3.0	7
8	Linden	36.0	9.0	Good	Broad form	Multiple leaders, crowded by adjacent tree	REMOVE	2.4	8
9	Linden	30.0	9.0	Good	Asymmetrical form	Crowded by adjacent tree, elevated crown	REMOVE	2.4	9
10	Linden	34.0	10.0	Good	Broad form	Minor dieback on lower branches	REMOVE	2.4	10
11	Linden	35.0	7.0	Fair	Irregular form	Leaning, double leader, one sided form	REMOVE	2.4	11
12	White Mulberry	20.0	7.0	Good	Pollarded form	Heavily pruned	PRESERVE	1.8	12
13	Juniper	15.21	7.0	Good	Multi-stemmed	One sided form, crowded by adjacent tree, elevated crown	REMOVE	1.8	13
14	Juniper	40.0	7.0	Good	Multi-stemmed	Multiple stems fused together, One sided form, crowded by adjacent tree, elevated crown	REMOVE	2.4	14
15	Juniper	31.0	8.0	Good	One sided form	crowded by adjacent tree, elevated crown	REMOVE	2.4	15
16	Juniper	23.0	8.0	Good	Multi-stemmed	One sided form, crowded by adjacent tree, elevated crown	REMOVE	1.8	16
17	Juniper	9.28	7.0	Fair	One sided form	Significant dieback on east side	REMOVE	1.8	17
18	Juniper	12.28	10.0	Fair	One sided form	Dieback on lower branches	REMOVE	1.8	18
19	Juniper	22.5	7.0	Fair	One sided form	Crown subordinated by adjacent tree	REMOVE	1.8	19
20	Black Walnut	60.0	15.0	Good	One sided form	West side of crown pruned due to overhead wires	PRESERVE	3.6	20
21	Manitoba Maple	25.0	7.0	Fair	One sided form	Leaning, epicormic growth throughout	PRESERVE	1.8	21
22	Silver Maple	Approx. 50	16.0	Good	Double stem	Broad form, low branching, minor internal dieback	PRESERVE	2.4	22
23	Norway Maple	20.0	8.0	Fair	Irregular form	Crossing branches, some sucker growth throughout	REMOVE	1.8	23
24	Norway Maple	23.0	6.0	Poor	Irregular form	Wound at base, significant dieback in crown	REMOVE	1.8	24
25	Norway Maple	24.0	8.0	Good	Good form	Minor decay near base, some internal deadwood	REMOVE	1.8	25
26	Norway Maple	21.0	7.0	Poor	Good form	Girdled stem, basal decay, minor dieback throughout	REMOVE	1.8	26
27	Austrian Pine	Approx. 30	7.0	Fair	Co-dominant leaders	Elevated crown, crowded by adjacent trees, minor dieback in crown	PRESERVE	2.4	27
28	Austrian Pine	35.0	8.0	Fair	High crown	Dieback on lower branches, dieback in crown	PRESERVE	2.4	28
29	Austrian Pine	Approx. 35	8.0	Poor	One sided form	Crowded by adjacent tree, dieback on lower branches, no clear leader	PRESERVE	2.4	29
30	Serviceberry	8.0	2.0	Poor	Good form	Dieback throughout	REMOVE	1.2	30
31	Linden	11.5	4.0	Good	Asymmetrical form	Girdled roots	REMOVE	1.8	31
32	Linden	13.0	4.0	Good	Good form	Immature tree	REMOVE	1.8	32
33	Linden	11.0	3.0	Good	Good form	Immature tree	REMOVE	1.8	33
34	Linden	22.5	6.0	Good	Irregular form	Multiple leaders, lower limbs pruned, sucker growth at base	REMOVE	1.8	34
35	Honey locust	10.0	4.0	Good	Good form	Immature tree	REMOVE	1.2	35
36	Honey locust	9.0	3.0	Good	Good form	Immature tree	REMOVE	1.2	36
37	Honey locust	9.0	3.0	Good	Good form	Immature tree	REMOVE	1.2	37
38	Honey locust	6.0	2.0	Poor	Narrow form	Dead leader	REMOVE	1.2	38
39	Honey locust	7.0	3.0	Poor	Narrow form	95% Dead	REMOVE	1.2	39
40	Honey locust	6.0	3.0	Poor	Good form	50% of crown dead	REMOVE	1.2	40
41	Honey locust	7.0	3.0	Fair	Good form	Minor dieback in crown	REMOVE	1.2	41
42	Honey locust	3.0	5.0	Good	Good form	Good form	REMOVE	1.2	42
43	Linden	19.5	7.0	Good	Good form	Good form	REMOVE	1.8	43
44	Emerald Cedar	Whip-13	2.0	Good	Good form	Minor internal dieback	REMOVE	1.8	44
45	Emerald Cedar	Whip-13	2.0	Good	Good form	Minor internal dieback	REMOVE	1.8	45

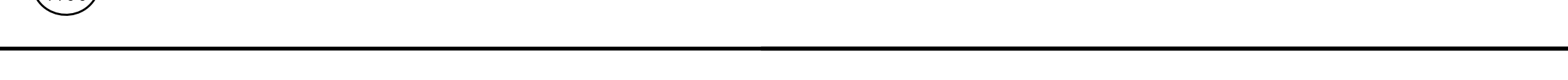
EXISTING TREE INVENTORY



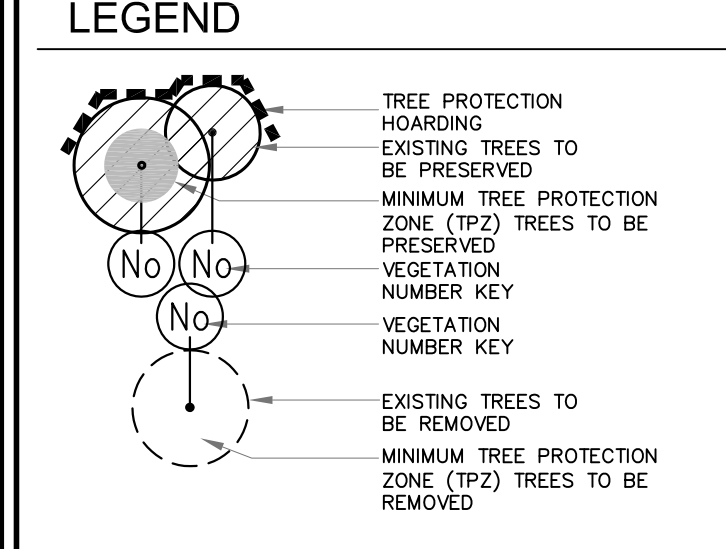
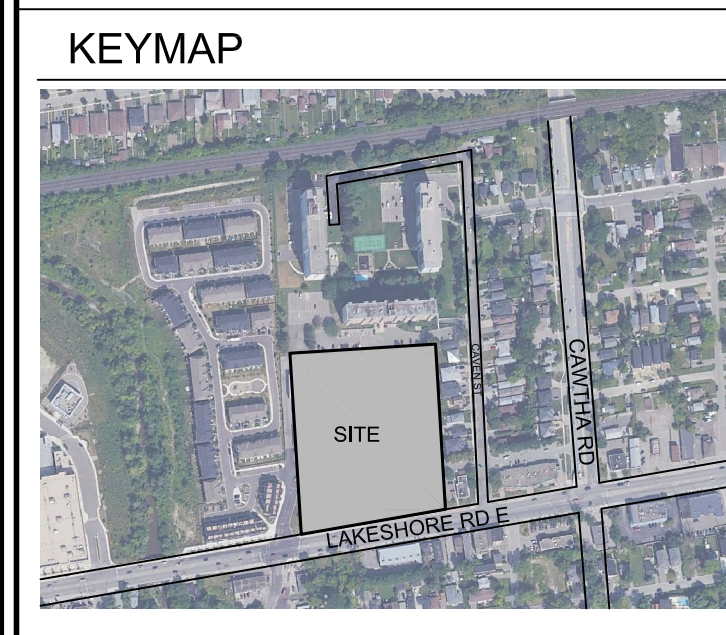
- NOTES:**
- Hoarding details to be determined following initial site inspection.
 - Private tree hoarding to be approved by Development & Design.
 - City tree hoarding to be approved by Community Services Dept.
 - Hoarding must be supplied, installed and maintained by the applicant throughout all phases of construction.
 - Inspection must be conducted by the Development and Design Division prior to removing any/all private tree hoarding.
 - Do not allow water to collect and pond behind or within hoarding.
 - T-bar supports are acceptable alternative to 4x4 posts. U-shaped metal supports will not be accepted.
 - Plywood must be utilized for solid hoarding. OSB/Chipboard will not be accepted for solid hoarding. Plywood sheets must be installed on "construction" side of frame.
 - Applicant is responsible to ensure utility locates are completed within city boulevard prior to installing framed hoarding.

TREE PRESERVATION HOARDING
 SCALE: NTS DATE: JAN 2017

TREE HOARDING DETAIL FOR REFERENCE



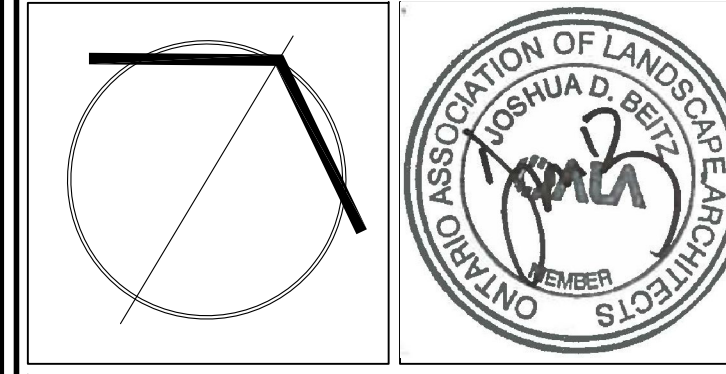
- GENERAL NOTES**
- VERIFY ALL DIMENSIONS.
 - DO NOT SCALE DRAWINGS.
 - REPORT ANY DISCREPANCIES, DISCOVERED ERRORS, OR OMISSIONS TO THE LANDSCAPE ARCHITECT BEFORE PROCEEDING.
 - IT IS ADVISED THAT CONTRACTORS CONTACT THE LANDSCAPE ARCHITECT PRIOR TO CONSTRUCTION TO ENSURE THE USE OF THE LATEST REVISED DRAWINGS.
 - DRAWINGS AND SPECIFICATIONS ARE THE PROPERTY OF THE LANDSCAPE ARCHITECT.



Math Jones
MATTHEW C. GEHRES
 International Society of Arboriculture
 Certified Arborist #ON-114A
 Date: **OCTOBER 28, 2022**

No.	DATE	REVISION	BY
2	OCT. 28 2022	ISSUED FOR REZONING	JOB
1	NOV 18 2021	ISSUED FOR COORDINATION	JOB

It is the responsibility of the Contractor and/or Owner to ensure that the drawings with the latest revisions are used for construction.



SBK 1770 HURONTARIO STREET, SUITE 320
 MISSISSAUGA, ONTARIO, L4R 3G9
 416-695-4949 F: 905-712-3101
 WWW.STRYBOS.COM

STRYBOS BARRON KING
 LANDSCAPE ARCHITECTURE

PROJECT: **PROPOSED MIXED-USE RESIDENTIAL DEVELOPMENT**
 579, 619 Lakeshore Road E
 + 1022, 1028 Caven Street
 Mississauga, Ontario
 THE BREDA GROUP

DRAWING TITLE: **TREE INVENTORY AND PRESERVATION PLAN**

SCALE: 1:400	PROJECT No. 5559
DATE: NOVEMBER 2021	
DRAWN BY: S.D. K.L.	DRAWING No.
CHECKED BY: M.G. J.B.	V100