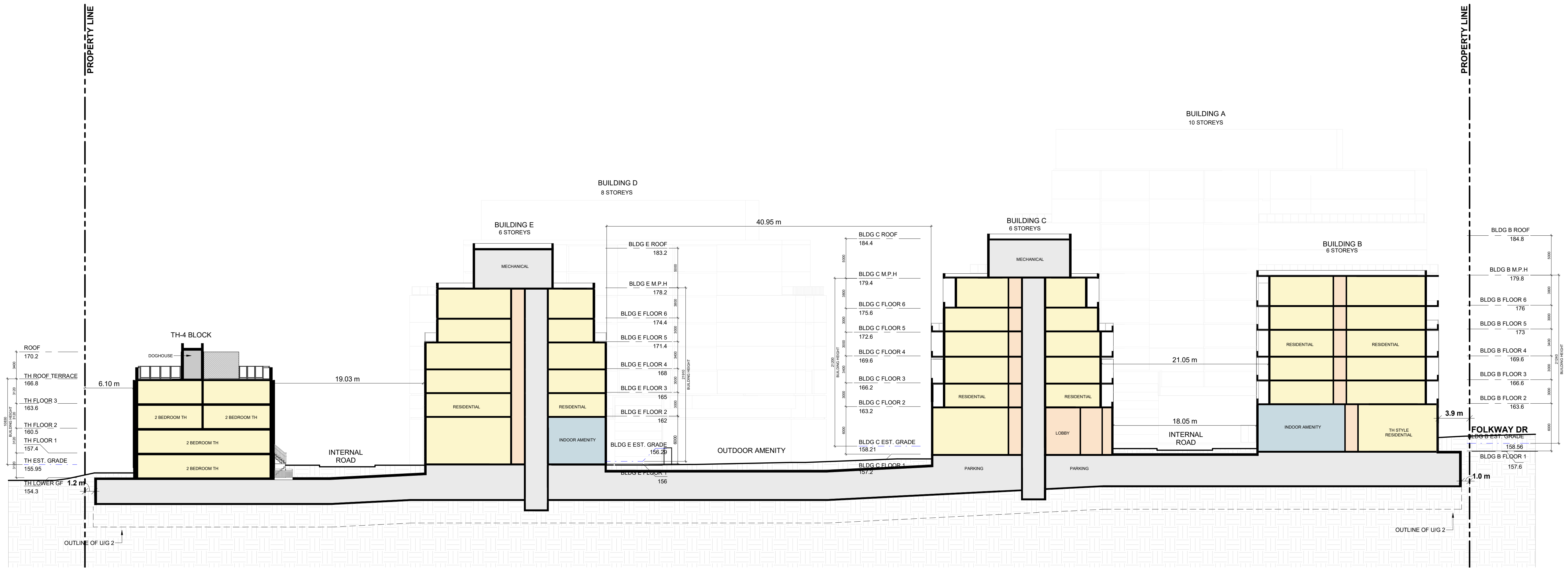


This drawing, as an instrument of service, is provided by and is the property of Turner Fleischer Architects Inc. The contractor must verify and accept responsibility for all dimensions and conditions on site and must notify Turner Fleischer Architects Inc. of any variations from the supplied information. This drawing is not to be scaled. The architect is not responsible for the accuracy of survey, structural, mechanical, electrical, etc. information shown on this drawing. Refer to the appropriate consultant drawings before proceeding with the work. Contractor must conform to all applicable codes and requirements of authorities having jurisdiction. The contractor working from drawings not specifically marked "For Contractor" must assume full responsibility and bear costs for any corrections or damages resulting from his work.



1 N-S SITE SECTION
SPA401 1:250

#	DATE	DESCRIPTION	BY
1	2022-08-22	OFFICIAL PLAN AND REZONING SUBMISSION	AYU

PROJECT
4099 Erin Mills Parkway, Mississauga, ON

DRAWING
N-S SITE SECTION

PROJECT NO.	19.001
PROJECT DATE	2022-08-26
DRAWN BY	JMS
CHECKED BY	AYU
SCALE	1:250



DRAWING NO.	SPA401	REV.	1
-------------	--------	------	---

2022-08-26 7:22:06 PM