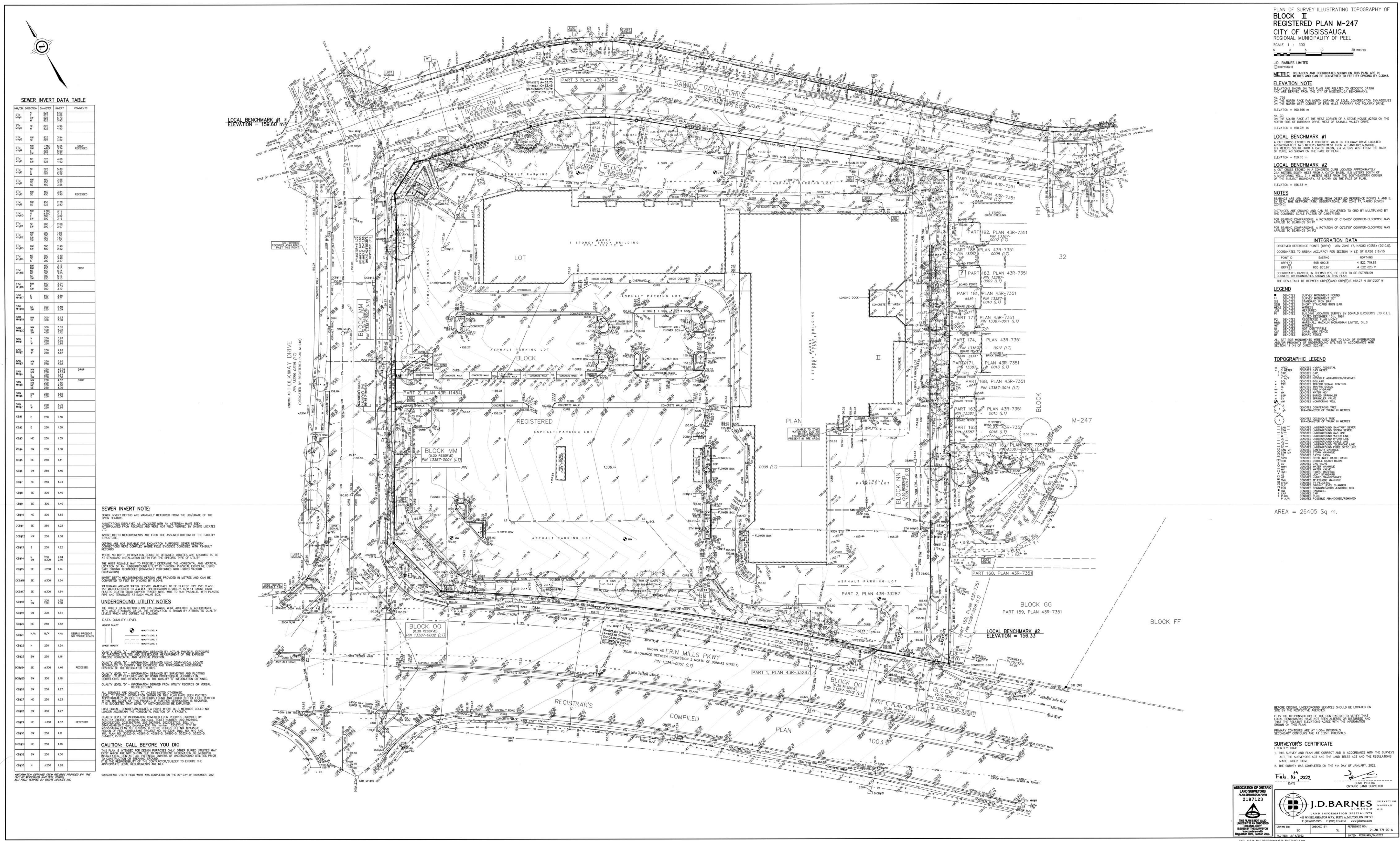


This drawing, as an instrument of service, is provided by and is the property of Turner Fleischer Architects Inc. The contractor must verify and accept responsibility for all dimensions and conditions on site and must notify Turner Fleischer Architects Inc. of any variations from the supplied information. This drawing is not to be scaled. The architect is not responsible for the accuracy of survey, structural, mechanical, electrical, etc., information shown on this drawing. Refer to the applicable codes and requirements of authorities having jurisdiction. The contractor working from drawings not specifically marked "For Construction" must assume full responsibility and bear costs for any corrections or damages resulting from his work.



1	2022-08-22	OFFICIAL PLAN AND REZONING SUBMISSION	AYU
#	DATE	DESCRIPTION	BY

PROJECT
**4099 Erin Mills Parkway, Mississauga,
ON**

DRAWING

SURVEY

PROJECT NO. 19.001	
PROJECT DATE 2022-08-26	
DRAWN BY JMS	
CHECKED BY AYU	
SCALE	