

This drawing, as an instrument of service, is provided by and is the property of Turner Fleischer Architects Inc. The contractor must verify and accept responsibility for all dimensions and conditions on site and must notify Turner Fleischer Architects Inc. of any variations from the supplied information. This drawing is not to be scaled. The architect is not responsible for the accuracy of survey, structural, mechanical, electrical, etc. information shown on this drawing. Refer to the appropriate consultant drawings before proceeding with the work. Contractor must conform to all applicable codes and requirements of all applicable building authorities. The contractor working from drawings not specifically marked 'for Contractor' must assume full responsibility and bear costs for any corrections or damages resulting from his work.

EXTERIOR FINISH LEGEND

1	STONE - LIGHT GREY
2A	BRICK - LIGHT BROWN
2B	BRICK - DARK GREY
2C	BRICK - LIGHT BEIGE
2D	BRICK - BLACK
3	PRECAST CONCRETE - WHITE
4A	CLEAR GLAZING
4B	SPENDRAL GLASS - GREY
5	ALUMINUM MULLIONS - BLACK
6A	METAL PANEL - DARK GREY
6B	METAL PANEL - LIGHT BEIGE
6C	METAL PANEL - RED
7	STUCCO - LIGHT GREY
7A	STUCCO - DARK GREY



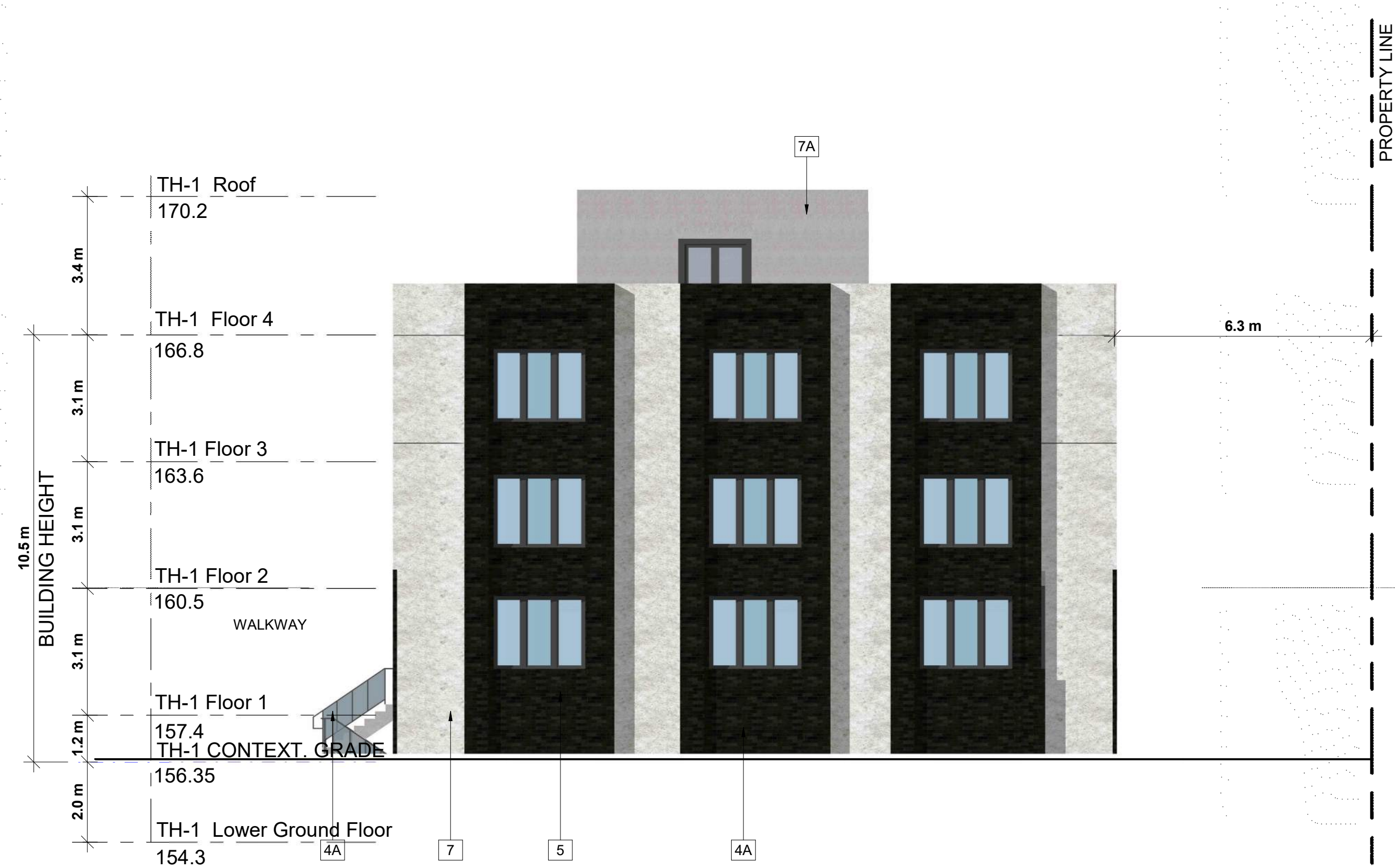
3 Townhouse Elevation A
SPA316 1:100



2 Townhouse Elevation B
SPA316 1:100



4 Townhouse Elevation C
SPA316 1:100



1 Townhouse Elevation D
SPA316 1:100

#	DATE	DESCRIPTION	BY
1	2022-08-22	OFFICIAL PLAN AND REZONING SUBMISSION	AYU

PROJECT
4099 Erin Mills Parkway, Mississauga, ON

DRAWING
TOWNHOUSE ELEVATIONS

PROJECT NO.	19.001
PROJECT DATE	2022-08-26
DRAWN BY	OKL
CHECKED BY	AYU
SCALE	As indicated



DRAWING NO. SPA316 REV. 1