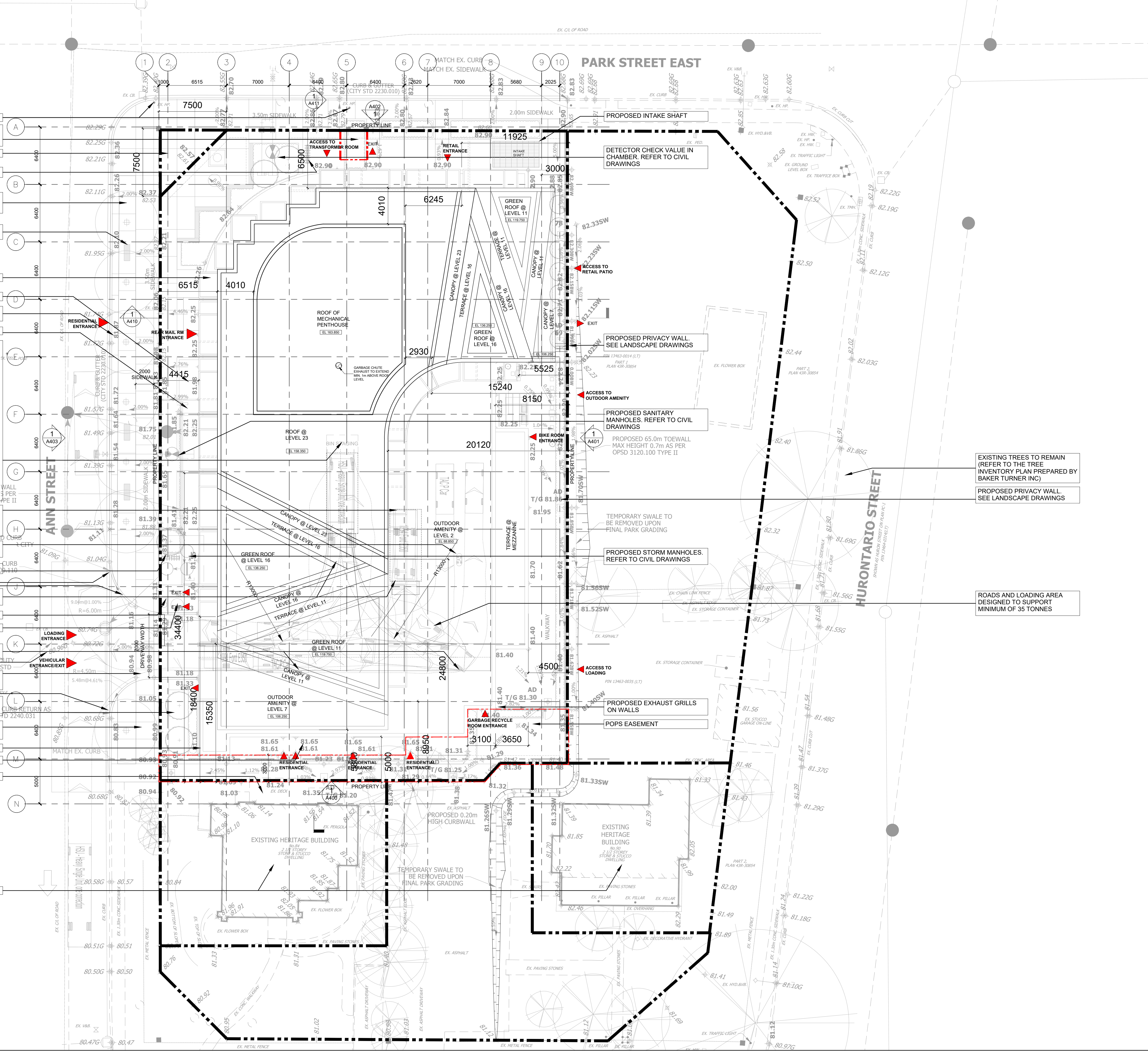


ESTABLISHED GRADE CALCULATION					
LENGTH NO.	BEGIN ELEV.	END ELEV.	LENGTH	(L1+L2)/2XL	
1	82.25	82.25	23,365.00	1,921,771.25	25
2	82.25	81.55	7,455.00	610,564.50	5
3	81.55	81.18	5,920.00	481,680.80	5
4	81.18	82.25	799,880.00	65,594.40	5
5	82.25	82.90	79,144.00	6,509.594,000	5
6	82.25	82.90	5,770.00	476,457.75	5
7	82.90	82.75	6,565.00	543,746.13	5
8	82.75	82.90	21,025.00	1,741,395.63	5
9	82.90	82.90	7,805.00	647,034.50	5
10	82.90	82.25	29,080.00	2,395,080.00	5
TOTAL:			195,844.00	16,127,322.28	82.35
EG:					



ROADS AND LOADING AREA
DESIGNED TO SUPPORT
MINIMUM OF 35 TONNES

Project No. 21-182	Drawing No. A104
-----------------------	---------------------