

WESTMINSTER MISSISSAUGA UNITED CHURCH

October 14, 2022

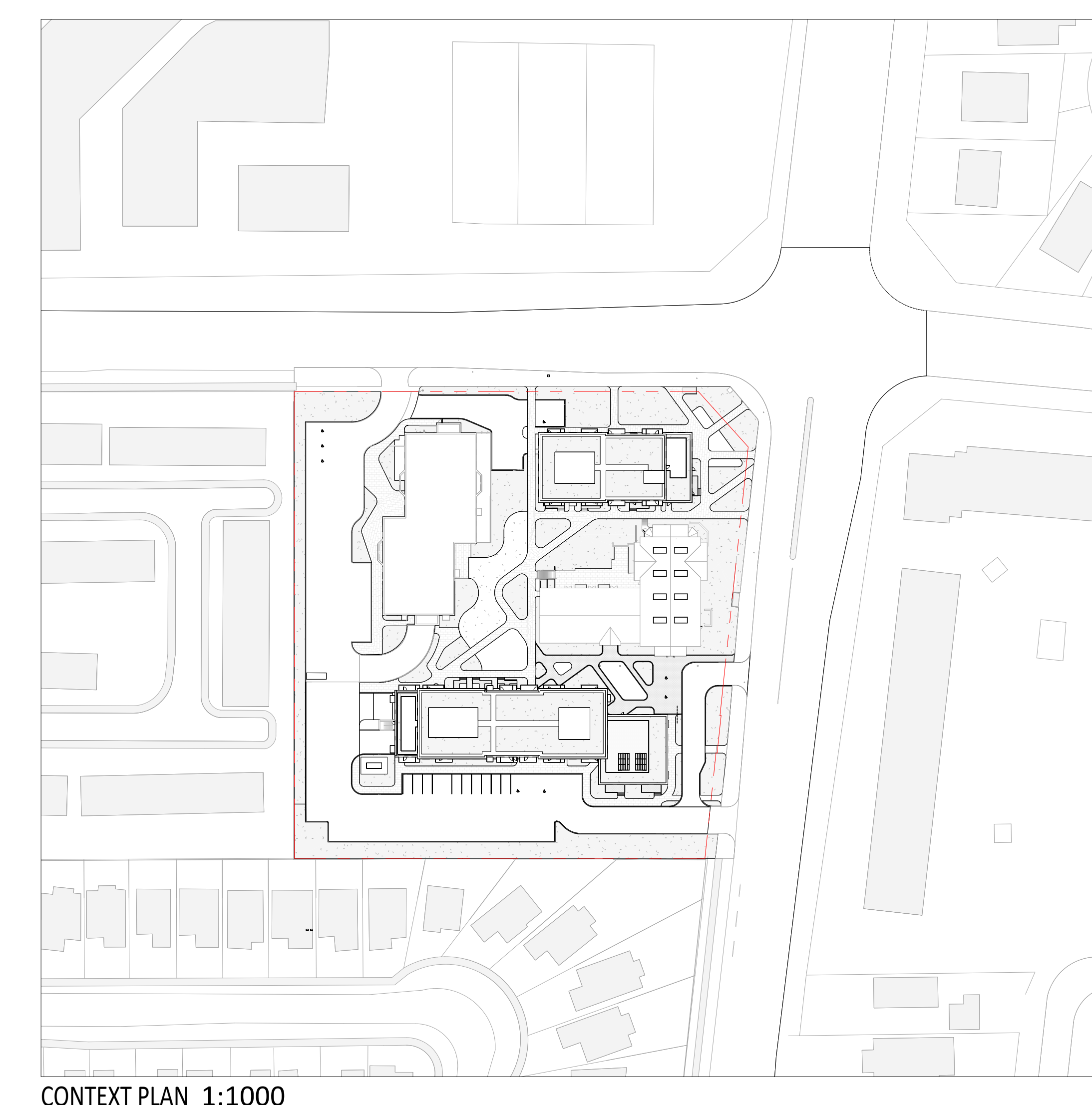


OFFICIAL PLAN AMENDMENT & ZONING BYLAW APPROVAL

PROJECT TEAM

APPLICANT Kindred Works 8 King St. E, Unit 1802 Toronto, ON M5C 1B5 T: 416-618-2097	ARCHITECT KPMB Architects Inc. 351 King St E, Suite 1200 Toronto, ON M5A 0L6 T: 416-977-5104	STRUCTURAL ENGINEERS Aspect Structural Engineers 53 Jarvis St, Suite 200 Toronto, ON M5C 2H2 T: 647-954-4004	ELECTRICAL ENGINEERS Mulvey & Banani International Inc. 90 Sheppard Ave E, Suite 500 Toronto, ON M2N 3A1 T: 416-751-2520	MECHANICAL ENGINEERS Hammerschlag & Joffe Inc. 43 Lesmill Road Toronto, ON M3B 2T8 T: 416-444-9263	CIVIL ENGINEERS WSP Global Inc. 500 -119 Spadina Ave Toronto, ON M5V 2L1 T: 416-260-1560	TRANSPORTATION, PARKING & WASTE MANAGEMENT BA Consulting Group Ltd 45 St Clair Ave W, Suite 300 Toronto, ON M4V 1K9 T: 416-961-7110
LANDSCAPE ARCHITECT Janet Rosenberg & Studio 148 Kenwood Ave Toronto, ON M6C 2S3 T: 416-656-6665	ENVIRONMENTAL RWDI 901 King St W, Suite 400 Toronto, ON M5V 3H5 T: 647-475-1048	PASSIVE HOUSE JMV Consulting XXXXXXXXXX Toronto, ON XXX XXX T: 819-230-0369	GEOTECH Grounded Engineering 1 Banigan Drive Toronto, ON M4H 1G3 T: 647-254-7909	PLANNING MHBC 442 Brant St, Suite 204 Burlington, ON L7R 2G4 T: 905-639-8686		

Sheet No.	Drawing Name
A0-00	COVER PAGE & CONTEXT PLAN
A1-00	STATISTICS
A1-01	RENDERINGS
A1-02	SITE SURVEY
A1-03	SITE PLAN
A2-00	FLOOR PLAN - LOWERLEVEL 3
A2-01	FLOOR PLAN - LOWERLEVEL 2
A2-02	FLOOR PLAN - GROUND LEVEL
A2-03	FLOOR PLAN - LEVEL 2
A2-04	FLOOR PLAN - LEVEL 3
A2-05	FLOOR PLAN - LEVEL 4
A2-06	FLOOR PLAN - LEVEL 5
A2-07	FLOOR PLAN - LEVEL 6
A2-08	FLOOR PLAN - LEVEL 7
A2-09	FLOOR PLAN - LEVEL 8
A2-10	FLOOR PLAN - LEVEL 9
A2-11	FLOOR PLAN - LEVEL 10
A2-12	FLOOR PLAN - LEVEL 11
A2-13	FLOOR PLAN - LEVEL 12
A2-14	FLOOR PLAN - LEVEL 12
A2-15	FLOOR PLAN - ROOF LEVEL
A5-00	EAST FULL ELEVATION
A5-01	WEST FULL ELEVATION
A5-02	BUILDING 1 - NORTH ELEVATION
A5-03	BUILDING 1 - SOUTH ELEVATION
A5-04	BUILDING 2 - NORTH ELEVATION
A5-05	BUILDING 2 - SOUTH ELEVATION
A6-00	BUILDING 1 SECTION - LONGITUDINAL
A6-01	BUILDING 1 SECTION - TRANSVERSE
A6-02	BUILDING 2 SECTION - LONGITUDINAL
A6-03	BUILDING 2 SECTION - TRANSVERSE



CONTEXT PLAN 1:1000

Copyright © 2022 by the architect. All rights reserved. This drawing is the property of the architect and is not to be reproduced, stored in a retrieval system, or transmitted in any form or by any means, electronic, mechanical, photocopying, recording, or by any information storage and retrieval system, without the prior written consent of the architect.

GENERAL NOTES:
1. Drawings are to be used by the client. Contractors are to verify existing conditions and dimensions prior to construction. The architect is not responsible for any errors or omissions in the drawings or for any damage or injury resulting from the use of the drawings.
2. The architect is not responsible for any errors or omissions in the drawings or for any damage or injury resulting from the use of the drawings.
3. The architect is not responsible for any errors or omissions in the drawings or for any damage or injury resulting from the use of the drawings.
4. The architect is not responsible for any errors or omissions in the drawings or for any damage or injury resulting from the use of the drawings.
5. The architect is not responsible for any errors or omissions in the drawings or for any damage or injury resulting from the use of the drawings.
6. These documents are not to be used for construction unless specifically noted on the drawings.

1: 2022-10-14
No. Date Issued

KPMB Architects
251 King St. E. Suite 1200
Toronto, ON, Canada M5A 0L6
416.977.5104

UPRC
Westminster Mississauga

4094 Tormken Rd, Mississauga, ON
L4W 1J5

Project North True North

Project No. 2112
Scale 1:1000
Plot Date 10/14/2022

COVER PAGE & CONTEXT PLAN

A0-00