

© 2022 GOOGLE MAP DATA © 2022 TELEATLAS
LOCATION PLAN
 NTS

LEGEND

PROPERTY LINE	---
LIMIT OF CONSTRUCTION	---
PROPOSED LOT LINE	---
PROPOSED GRADE	• 149.22
PROPOSED GRADE (TOP OF CURB)	• 148.53TC
PROPOSED GRADE (BOTTOM OF CURB)	• 148.43BC
EXISTING GRADE	• 149.45EX
PROPOSED STORMWATER MANHOLE	○
PROPOSED SANITARY MANHOLE	○
PROPOSED STORM TANK ACCESS HATCH	○
PROPOSED STORM ACCESS HATCH	○
PROPOSED SANITARY ACCESS HATCH	○
PROPOSED AREA DRAIN	○
PROPOSED CATCH BASIN	○
EXISTING CATCH BASIN	○
EXISTING MANHOLE	○
EMERGENCY OVERLAND FLOW ROUTE	→

LIST OF DRAWINGS

SG-01 (SITE GRADING PLAN - PHASE I)	
SG-02 (SITE GRADING PLAN - PHASE II)	
SG-03 (SITE SERVICING PLAN - PHASE I)	
SG-04 (SITE SERVICING PLAN - PHASE II)	

SITE PLAN INFORMATION

GENSLER
 150 King Street West, Suite 1400
 TORONTO, ON M5H 1K9
 TEL: (416) 801 3880
 www.gensler.com

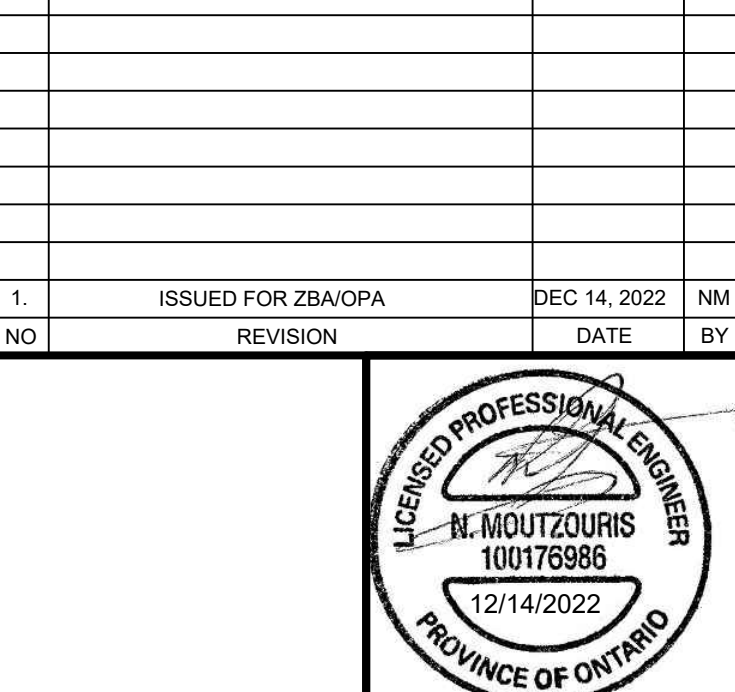
SURVEY INFORMATION

J. D. BARNES SURVEYING LIMITED
 LAND INFORMATION SPECIALISTS
 401 WHEELABRATOR WAY, SUITE A, MILTON, ON L9T 3C1
 TEL: (905) 875-9665 FAX: (905) 875-6986
 www.jdbarnes.com

BENCHMARK

ELEVATIONS SHOWN ON THIS PLAN ARE DERIVED FROM THE CITY OF MISSISSAUGA BENCHMARKS:
 No. 1035 ELEVATION = 98.825 m
 No. 1036 ELEVATION = 100.258 m

NO.	ISSUED FOR	DATE	BY
1	ISSUED FOR ZHANGRA	DEC 14, 2022	MM
	REVISION	DATE	BY



CITY OF MISSISSAUGA
SITE GRADING PLAN
 (PHASE I)
 MIXED USE DEVELOPMENT
 2072-2105 ROYAL WINDSOR DRIVE
 MISSISSAUGA, ONTARIO



DESIGNED BY: DS	DATE: SEP. 29, 2022	CHECKED BY: MM
DRAWN BY: DS	PROJECT No:	APPROVED BY: MM
SCALE: 1:200		
© copyright 2022 Lithos Group Inc.	UD22-046	SG-01