

NOTES

The following notes shall apply to all drawings and associated documents.

Copyright of this drawing and design is reserved by the Designer. The drawing and all associated documents are an asset of the Designer. The drawing and all associated documents may not be reproduced in whole or in part without the written permission of the Designer.

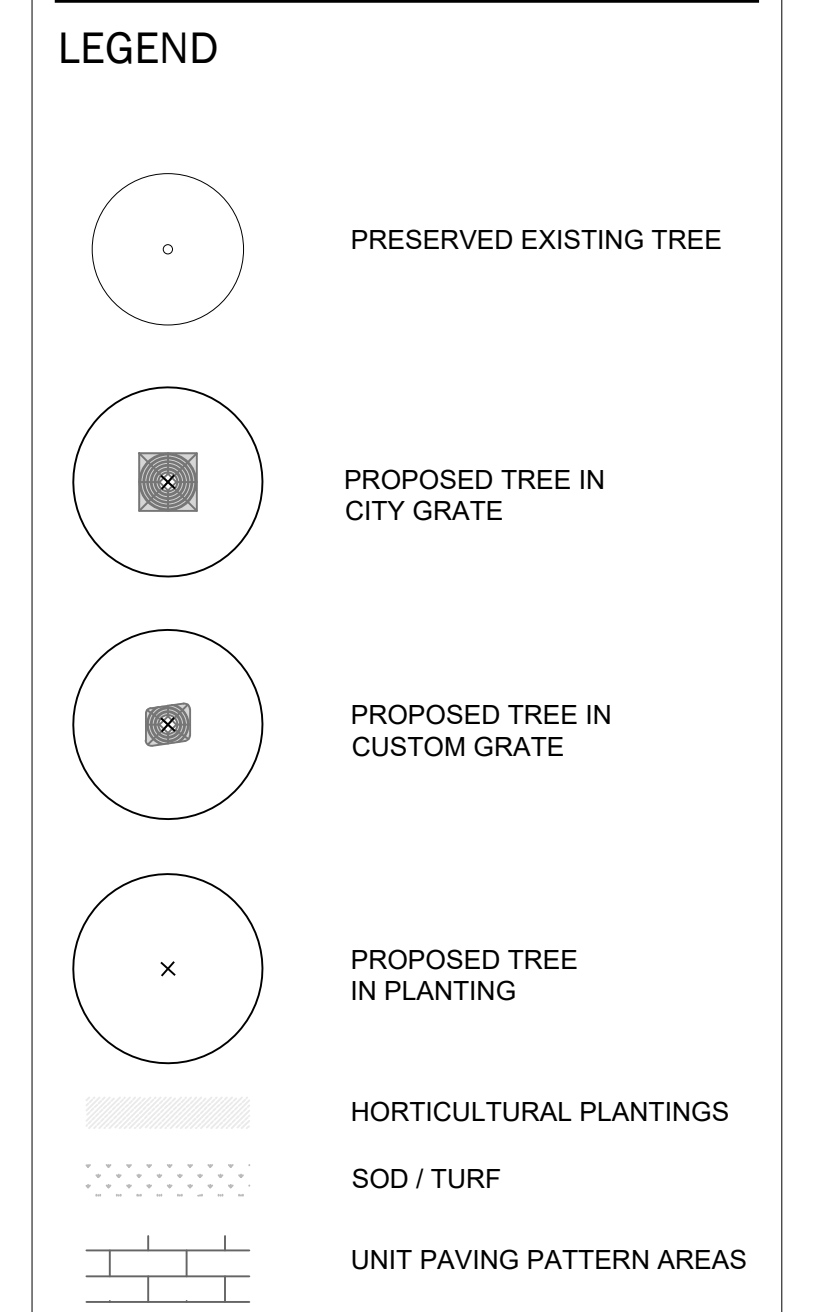
These Contract Documents are the property of the Landscape Architect. The Landscape Architect does not accept responsibility for the reproduction of these documents by the Contractor. The Contractor shall provide the Landscape Architect with a copy of the Contract Documents. The Landscape Architect will review the Contractor's design and provide any necessary clarifications or supplementary information regarding the intent of the Contract Documents. The Landscape Architect will review the Contractor's design and provide any necessary clarifications or supplementary information regarding the intent of the Contract Documents.

Designs are void if not sealed for construction. Contractor to verify all existing conditions and dimensions required to perform the work and report any discrepancies with the Contract Documents to the Landscape Architect before commencing work.

Positions of proposed mechanical or electrical devices, fittings, and fixtures are indicated on this drawing as approximate. The location of these devices, fittings, and fixtures shall be as shown on the drawings and as indicated on the drawings. These items not clearly located shall be located as directed by the Landscape Architect. These drawings are to be used for construction unless noted otherwise.

All work to be carried out in accordance with the Code and Bylaws of the authority having jurisdiction.

The Designer of these plans and specifications gives no warranty or representation to any party about the constructability of the represented by them. All contractors or subcontractors must verify measurements and existing conditions before they can properly construct the work represented by these plans.



ISSUE

10	
9	
8	
7	
6	
5	
4	
3	
2	2022-12-13 ISSUED FOR REZONING

Janet Rosenberg & Studio
 Landscape Architecture and Urban Design
 416 558 0855 • 416 558 5156 • www.jrbs.com
 188 Hurontario Avenue, Toronto Ontario M5C 2P3 Canada

SLATE ASSET MANAGEMENT

CLARKSON GO DEVELOPMENT
 2105-2077 Royal Windsor Drive, Mississauga, ON L5E 1V4

LANDSCAPE LAYOUT PLAN

SCALE: 1:200
 DRAWN: EY
 CHECKED: TD
 PROJECT NUMBER: 22-002
 DRAWING DATE: 2022-12-07

L100