

KPMB

Westminster Mississauga United Church
4095 Tomken Road

October 14, 2022
Issued for ZBA Submission

Waste Management Plan

Find below the initial ZBA concept for Waste Management for the Westminster Mississauga United Church application.

Waste Storage Building 1

For Building 1 on the north side of the site a garbage collection and storage room is available to store waste on the lower level 1. See figure 1 & 2 below for the townhouse pedestrian route to the lower level garbage collection and storage room using the lobby elevators.

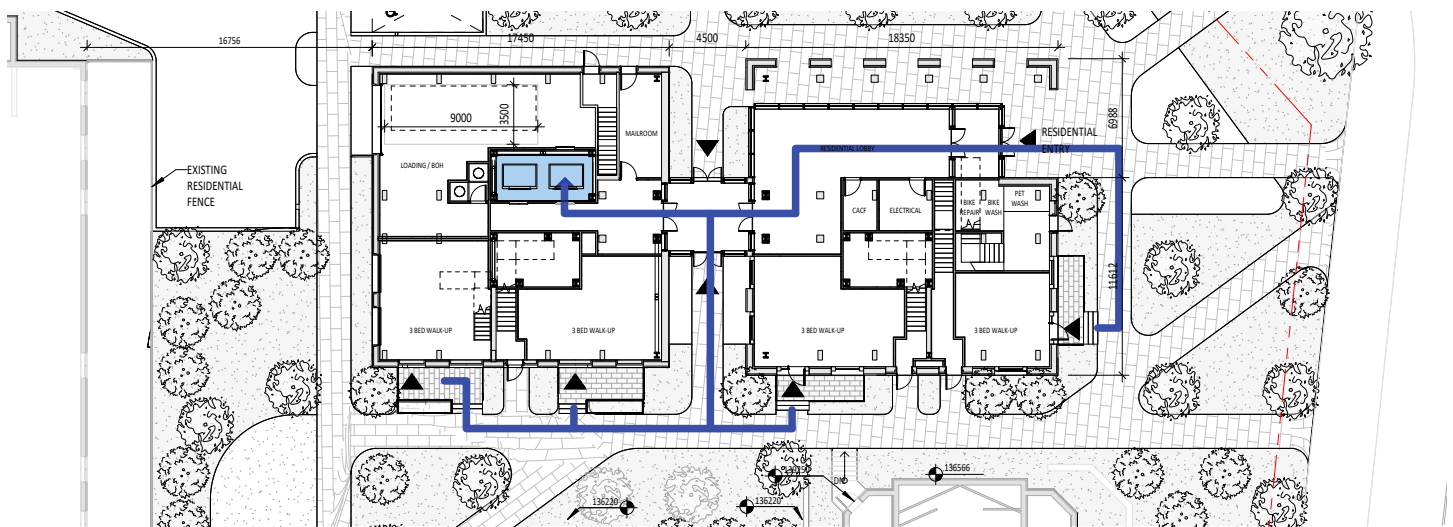


Figure 1 Building 1 Ground Floor - Townhome Pedestrian Route to Garbage Collection & Storage Room

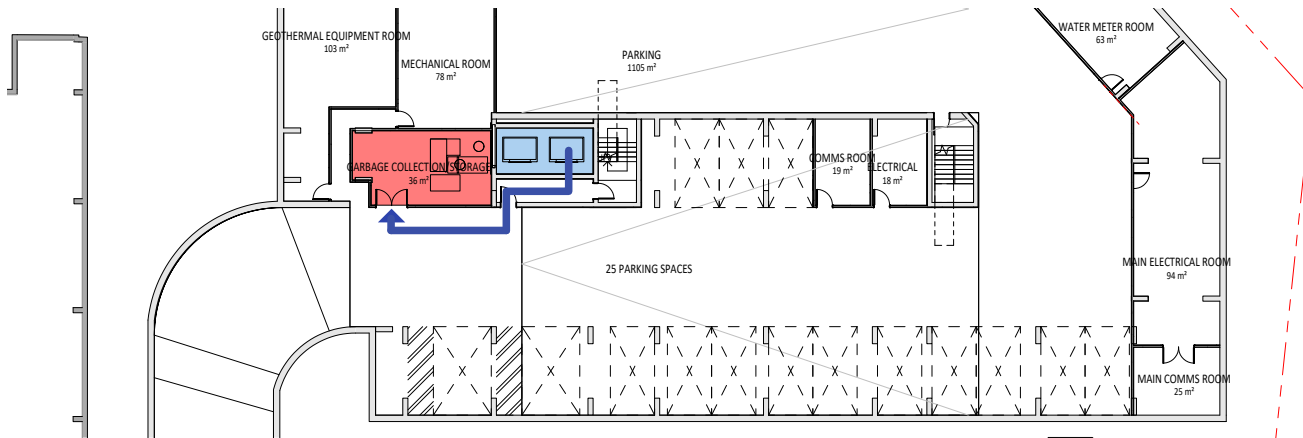





Figure 2 Building 1 Lower Level - Townhome Pedestrian Route to Garbage Collection & Storage Room

-  Townhome Units Pedestrian Route to Garbage Collection & Storage
-  Vertical Circulation
-  Garbage Collection & Storage

KPMB

Westminster Mississauga United Church
4095 Tomken Road

October 14, 2022
Issued for ZBA Submission

Waste Storage Building 2

For Building 2 on the south side of the site, storage is provided for waste materials including a townhome and church garbage drop-off room as well as a bulky item storage area on the ground floor of Building 2. See figure 3 below.

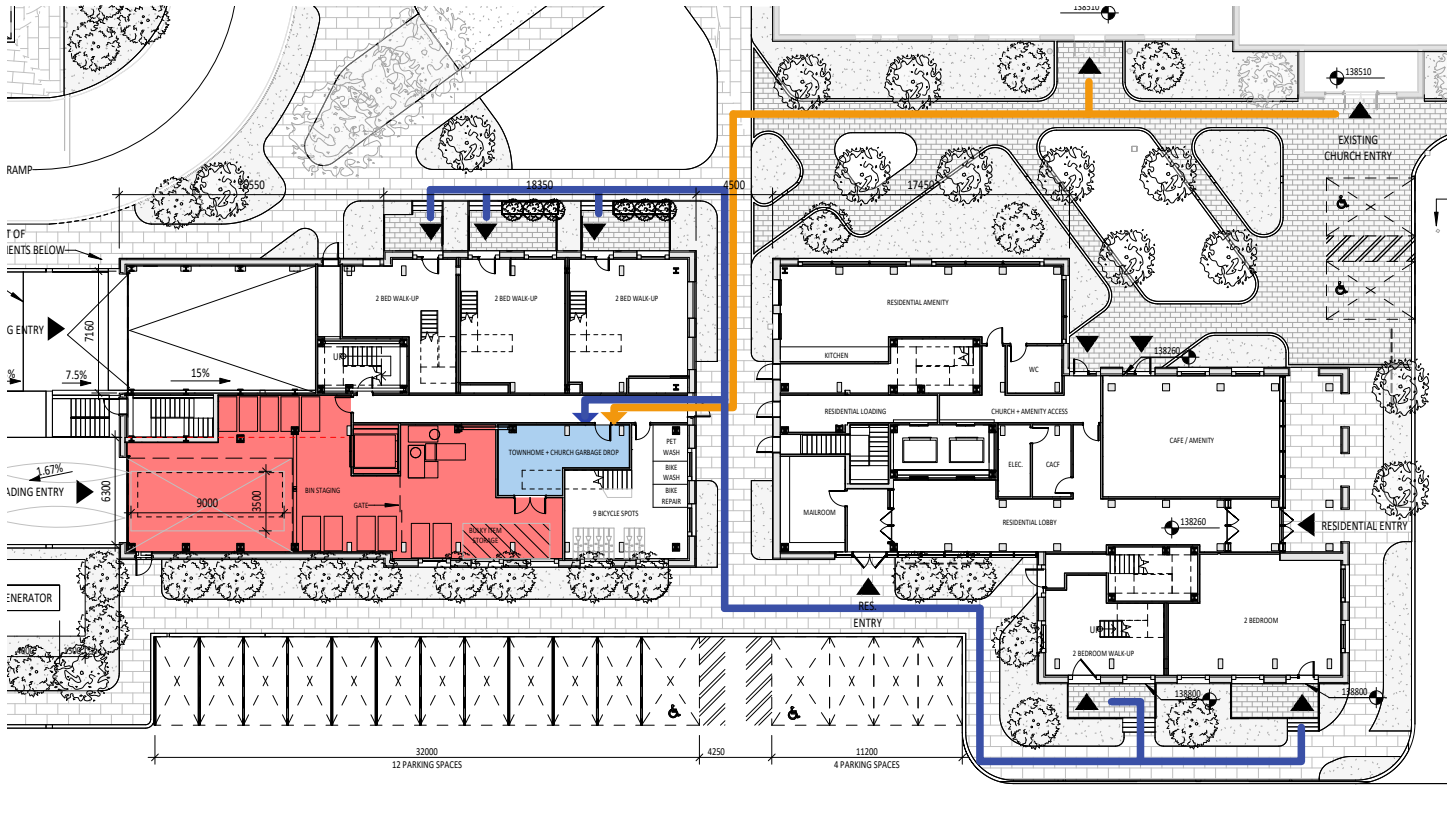


Figure 3 Building 2 Townhome and Church Garbage Drop Off + Bulky Item Storage

- Townhome Units Pedestrian Route to Garbage Drop-off Room
- Church Pedestrian Route to Garbage Drop-off Room
- Townhome and Church Garbage Drop-off Room
- Loading and Bulky Item Storage

KPMB

Westminster Mississauga United Church
4095 Tomken Road

October 14, 2022
Issued for ZBA Submission

Waste Collection Days

On collection days the waste would be moved through the tunnel from Building 1 to Building 2 to the holding room in the lower level 1 of Building 2 to prepare for garbage pickup. See figure 4 and 5 below.

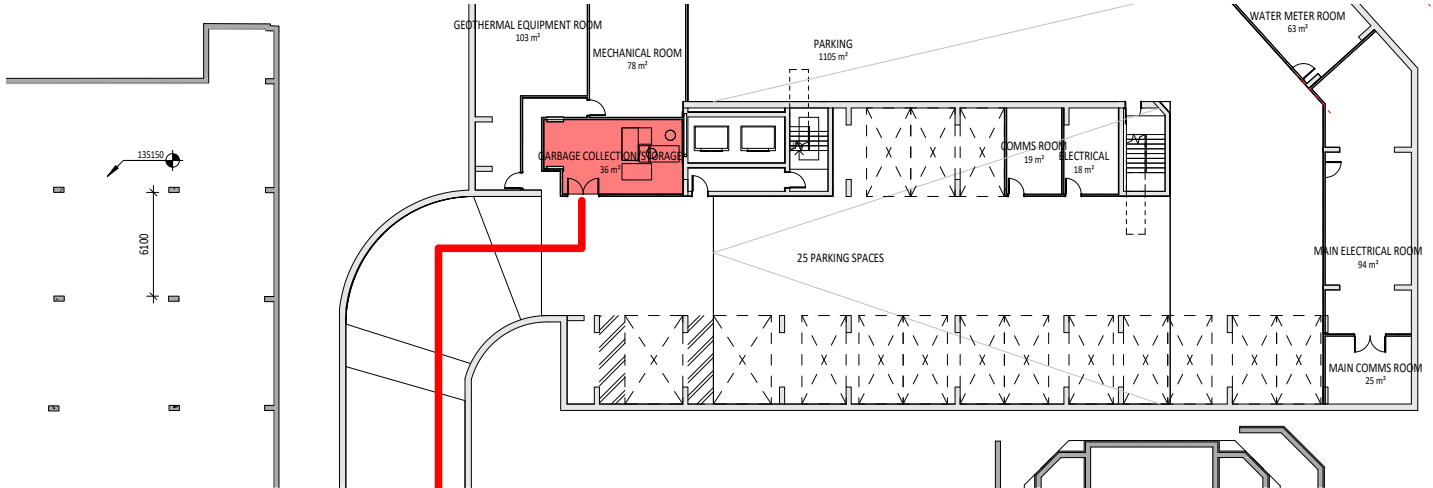


Figure 4 Garbage collection storage in the Lower level 1 of Building 1

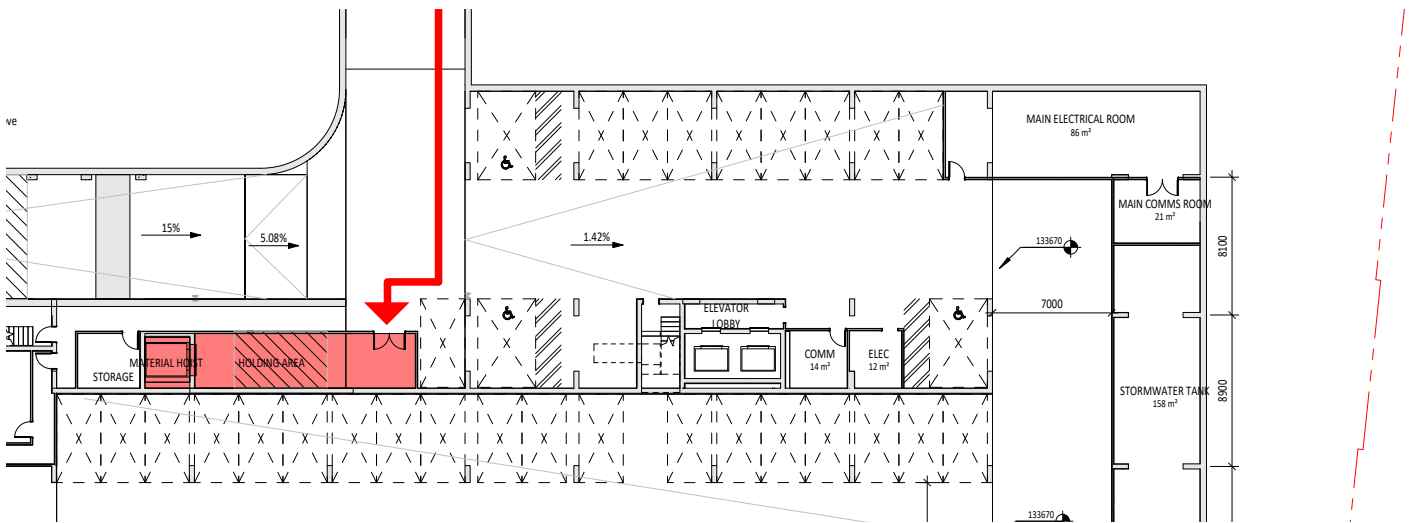


Figure 5 Holding area and Material hoist in the Lower level 1 of Building 2

Maintenance would use the material hoist to bring the garbage from the holding area in the lower level 1 up to the ground floor of Building 2 loading space for municipal pickup.

- Route of Garbage on Collection Day
- Garbage Storage/ Staging / Hoistway

KPMB

Westminster Mississauga United Church
4095 Tomken Road

October 14, 2022

Issued for ZBA Submission

Sufficient space is provided for the collection vehicle access to collection and loading areas in the loading space of Building 2. This loading space is 9.0m (L) x 3.5m (W) x 7.5m (H). See figure 4 below.

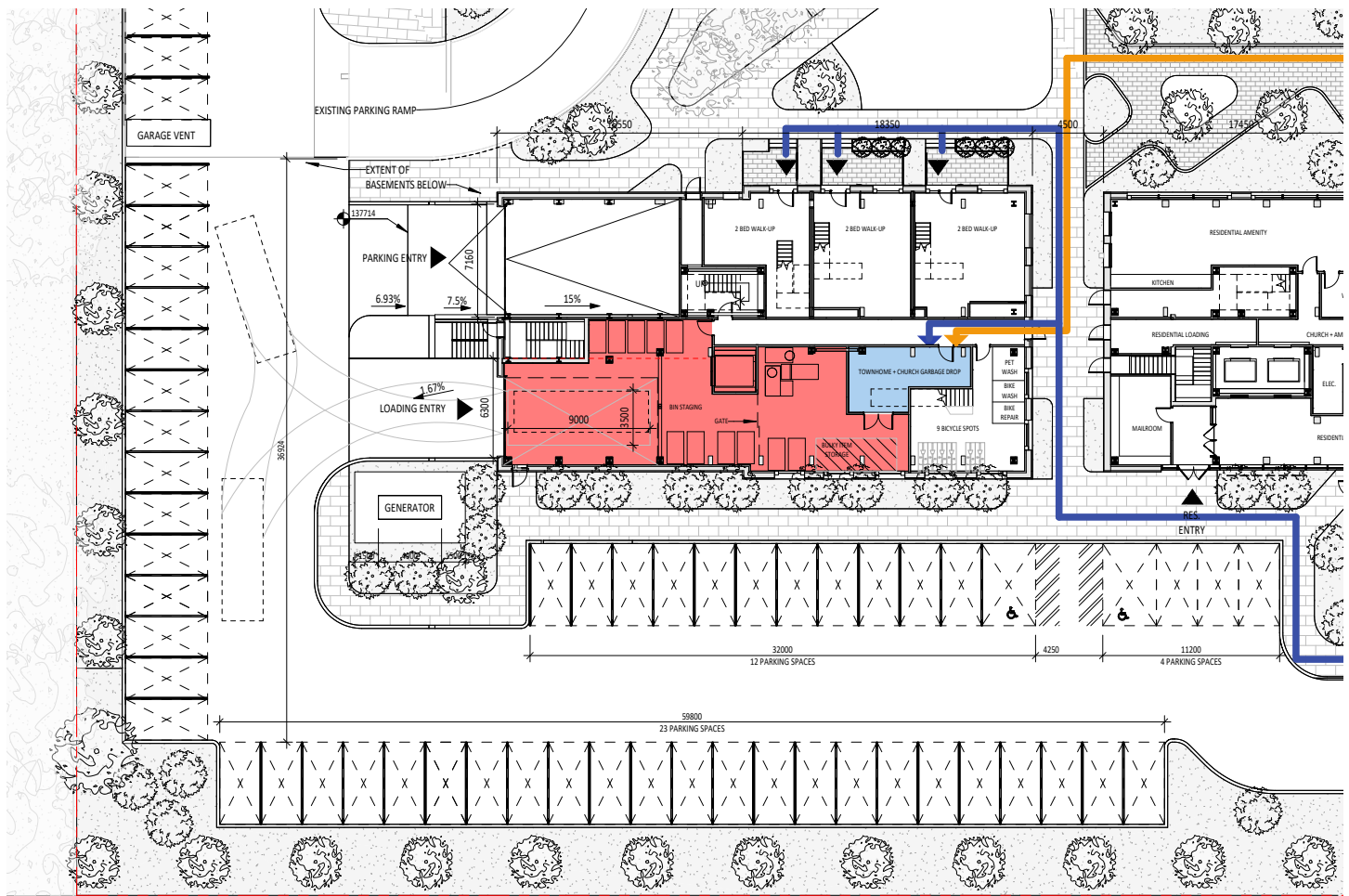


Figure 4 Loading space in Building 2 for municipal garbage pickup on collection days

Vehicle Maneuvering

The vehicle maneuvering and turning radii for the garbage truck can be found within our transportation package from BA Group; these drawings include access routes for the collection vehicle to and from collection areas.

Development Statistics

The proposed development statistics and number of units can be found on sheet A1-00 of the submitted architectural set.