

Oct. 25, 2022

**EXTERIOR FINISH LEGEND**

21115 - 805 DUNDAS STREET EAST

<p><b>1A</b> ARCHITECTURAL PRE-CAST CONCRETE PANEL COLOUR : LIGHT MANUFACTURER : RES PRECAST INC. STYLE : SANDBLASTED</p> <p><b>1B</b> ARCHITECTURAL PRE-CAST CONCRETE PANEL COLOUR : DARK MANUFACTURER : RES PRECAST INC. STYLE : SANDBLASTED</p> <p><b>2</b> ARCHITECTURAL BRICK MASONRY COLOUR : DARK MANUFACTURER : - STYLE : MODULAR</p> <p><b>3A</b> PREFINISHED WINDOW WALL SYSTEM - VISION PANEL GLAZING : CLEAR MANUFACTURER : GUARDIAN SUNGUARD FRAMING : ALUMINUM</p> <p><b>3B</b> PREFINISHED WINDOW WALL SYSTEM - GLASS SPANDREL PANEL GLASS COLOUR : #3-4595 GRAY THORN - VITRO CLEAR 6MM MANUFACTURER : OPACI-COAT-300 FRAMING : ALUMINUM</p> <p><b>3C</b> PREFINISHED WINDOW WALL SYSTEM - FRITTED VISION PANEL GLAZING : BIRD1st ETCH 21 MANUFACTURER : GUARDIAN SUNGUARD FRAMING : ALUMINUM</p>	<p><b>4</b> PREFINISHED WINDOW WALL - METAL PANELS / MULLION COLOUR : DARK MANUFACTURER : - METAL PANEL : PREFINISHED ALUMINUM</p> <p><b>5</b> PREFINISHED WINDOW WALL - METAL PANELS COLOUR : COPPER MANUFACTURER : - METAL PANEL : PREFINISHED ALUMINUM</p> <p><b>6</b> MECHANICAL LOUVERS COLOUR : TO MATCH MANUFACTURER : -</p> <p><b>7A</b> PREFINISHED CANOPY COLOUR : COPPER MANUFACTURER : - METAL PANEL : PREFINISHED ALUMINUM</p> <p><b>7B</b> PREFINISHED CANOPY COLOUR : LIGHT MANUFACTURER : - METAL PANEL : PREFINISHED ALUMINUM</p> <p><b>8</b> ROOF - SOFFIT WITH ROOF SHINGLE COLOUR : DARK MANUFACTURER : -</p>	<p><b>9A</b> PREFINISHED METAL ROOFING COLOUR : LIGHT MANUFACTURER : - METAL PANEL : ALUMINUM</p> <p><b>9B</b> PREFINISHED METAL ROOFING COLOUR : DARK MANUFACTURER : - METAL PANEL : ALUMINUM</p> <p><b>10A</b> PREFINISHED LOADING DOOR COLOUR : TO MATCH MANUFACTURER : -</p> <p><b>10B</b> TOWNHOUSE GARAGE DOOR COLOUR : DARK MANUFACTURER : - GLASS TYPE : TRANSLUCENT</p> <p><b>11</b> TOWNHOUSE ENTRY DOOR COLOUR : COPPER MANUFACTURER : -</p> <p><b>R1</b> RAILING W/ TINTED GLASS AND SLAB COVERS MATERIAL : PREFINISHED ALUMINUM GLASS TYPE : TEMPERED</p>
---	---	--

Exterior Finish Legend **2**  
NTS dA4.06

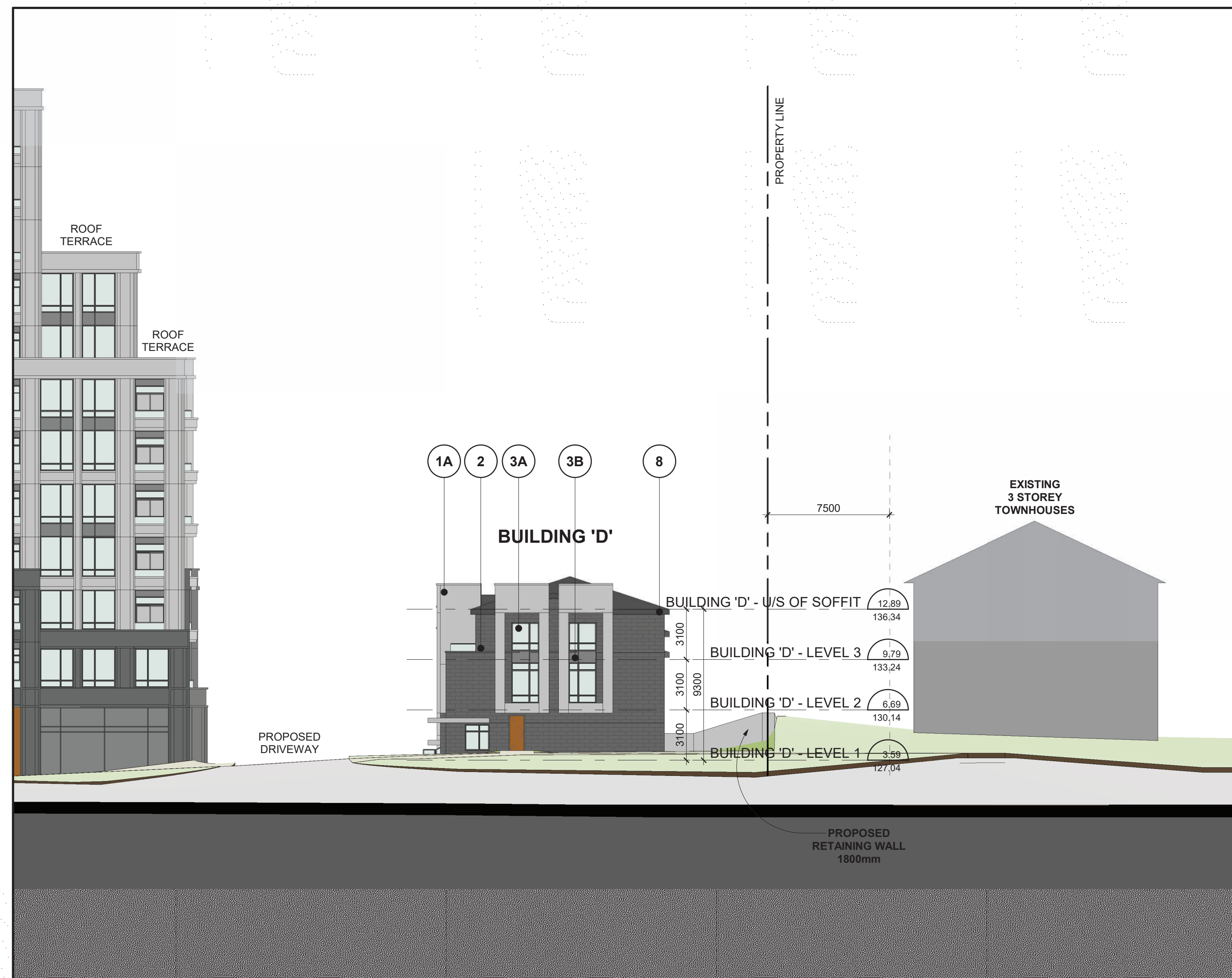
All Drawings, Specifications, and Related Documents are the Copyright of the Architect. The Architect retains all rights to control all uses of these documents for the intended issuance/use as identified below. Reproduction of these Documents, without permission from the Architect, is strictly prohibited. The Authorities Having Jurisdiction are permitted to use, distribute, and reproduce these drawings for the intended issuance as noted and dated below, however the extended permission to the Authorities Having Jurisdiction in no way debases or limits the Copyright of the Architect, or control of use of these documents by the Architect.

Do not scale the drawings.  
This Drawing is Not To Be Used For Construction Until Signed By The Architect.  
Date:

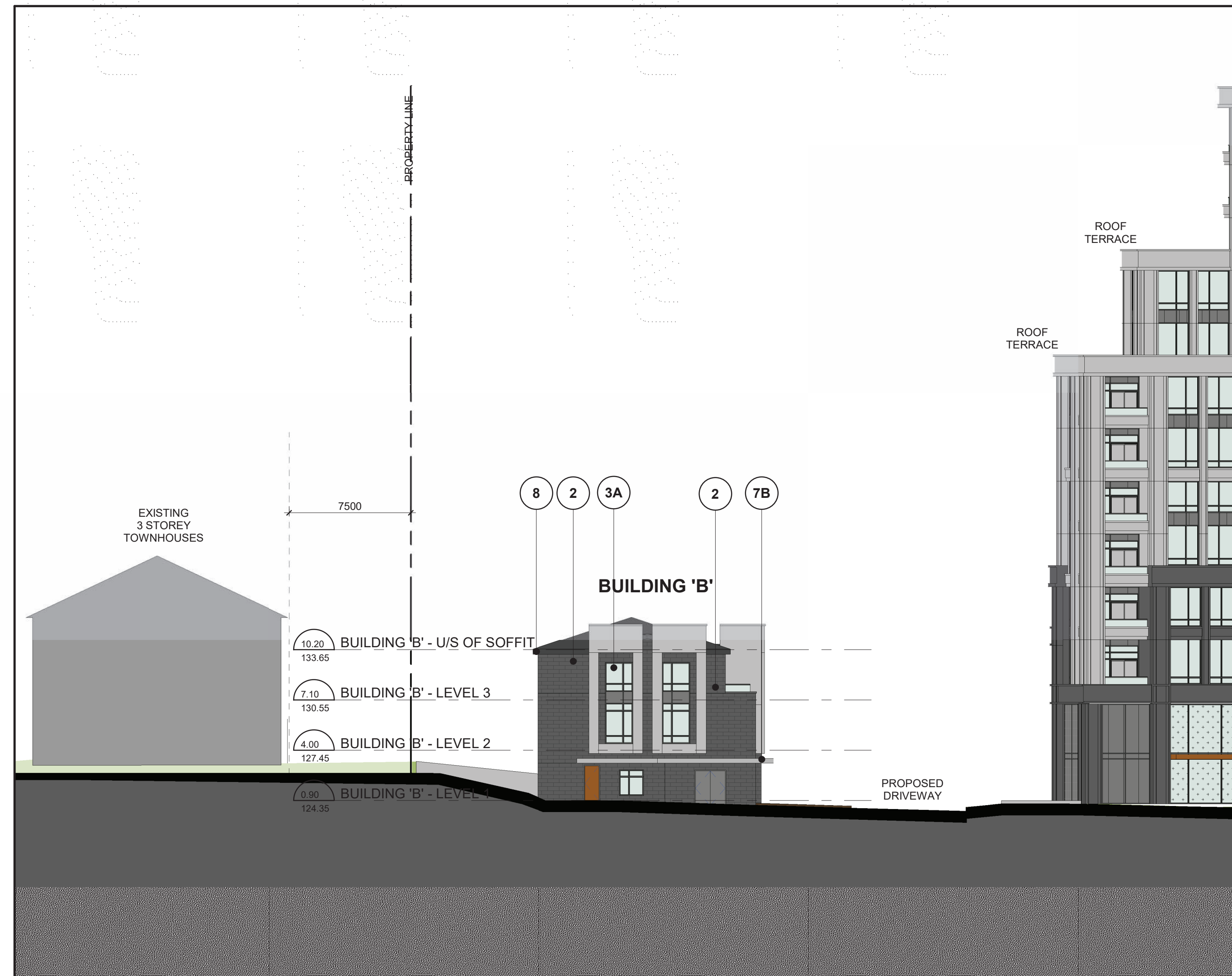
**KIRKOR**  
ARCHITECTS AND PLANNERS

20 De Boers Drive Suite 400  
Toronto, ON M3J 0H1

Revisions:		
No.:	Revision:	Date:
1	Rezoning Submission	Oct. 31, 2022



Townhouse - East Elevation **2**  
1 : 200 dA4.06



Townhouse - West Elevation **1**  
1 : 200 dA4.06

Revisions:		
No.:	Revision:	Date:
1	Rezoning Submission	Oct. 31, 2022
No.:	Issued For:	Date:

Client:  
**KJC PROPERTIES INC.**  
805 Dundas Street East, Mississauga, ON.  
Proposed Residential Development

Drawing Title:  
**Elevations - Townhouses**

Scale:  
**1 : 200**  
Drawn by:  
**D.S.**  
Checked by:  
**G.H.**  
Project No.:  
**21-115**  
Date:  
**Oct. 25, 2022**  
Drawing No.:

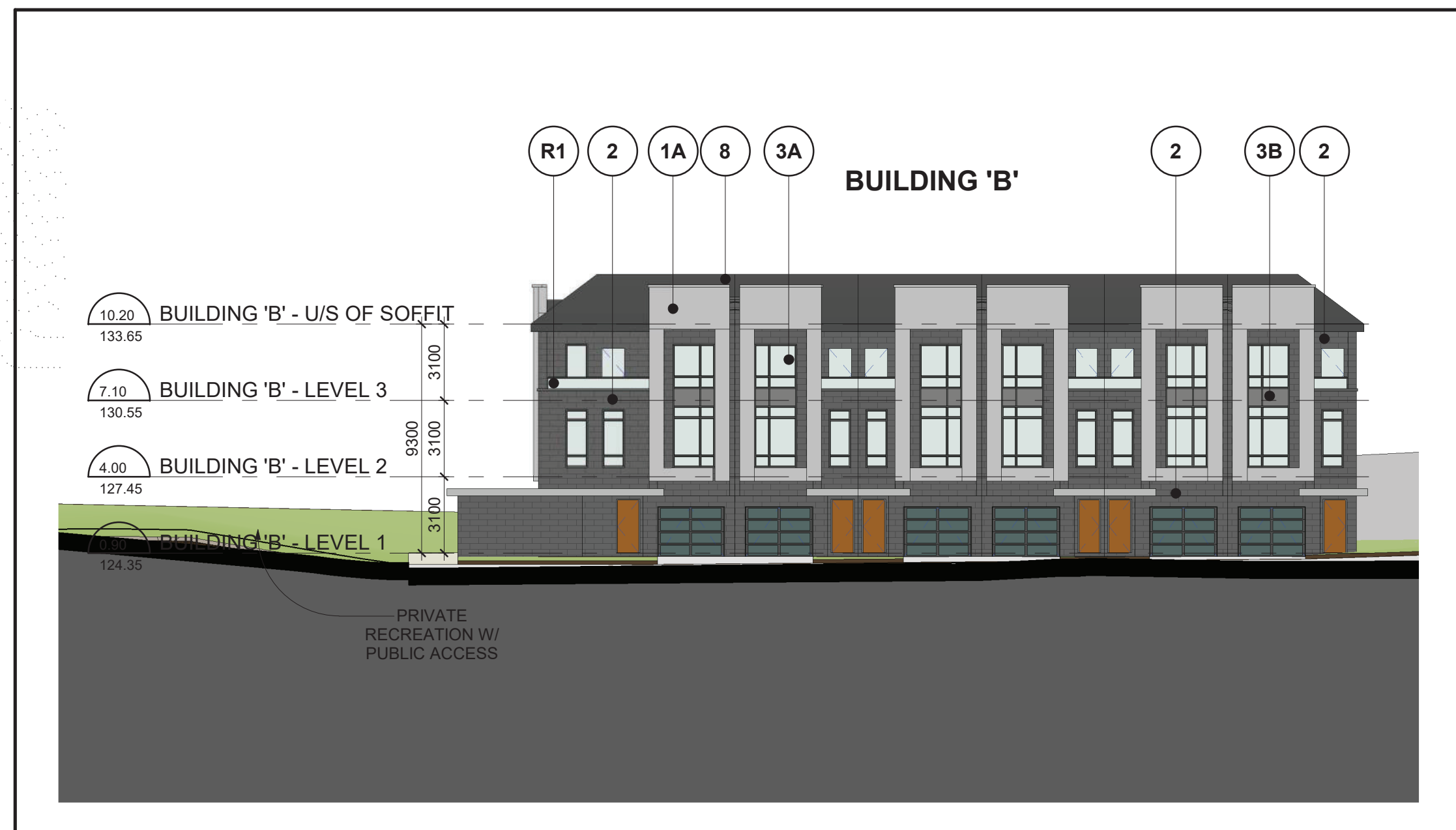
**dA4.06**

Plot Date: 10/26/2022 2:22:45 PM File Path: C:\Users\j2021\OneDrive\Documents\21115\21115.dwg Plot Date: 10/26/2022 2:22:45 PM File Path: C:\Users\j2021\OneDrive\Documents\21115\21115.dwg

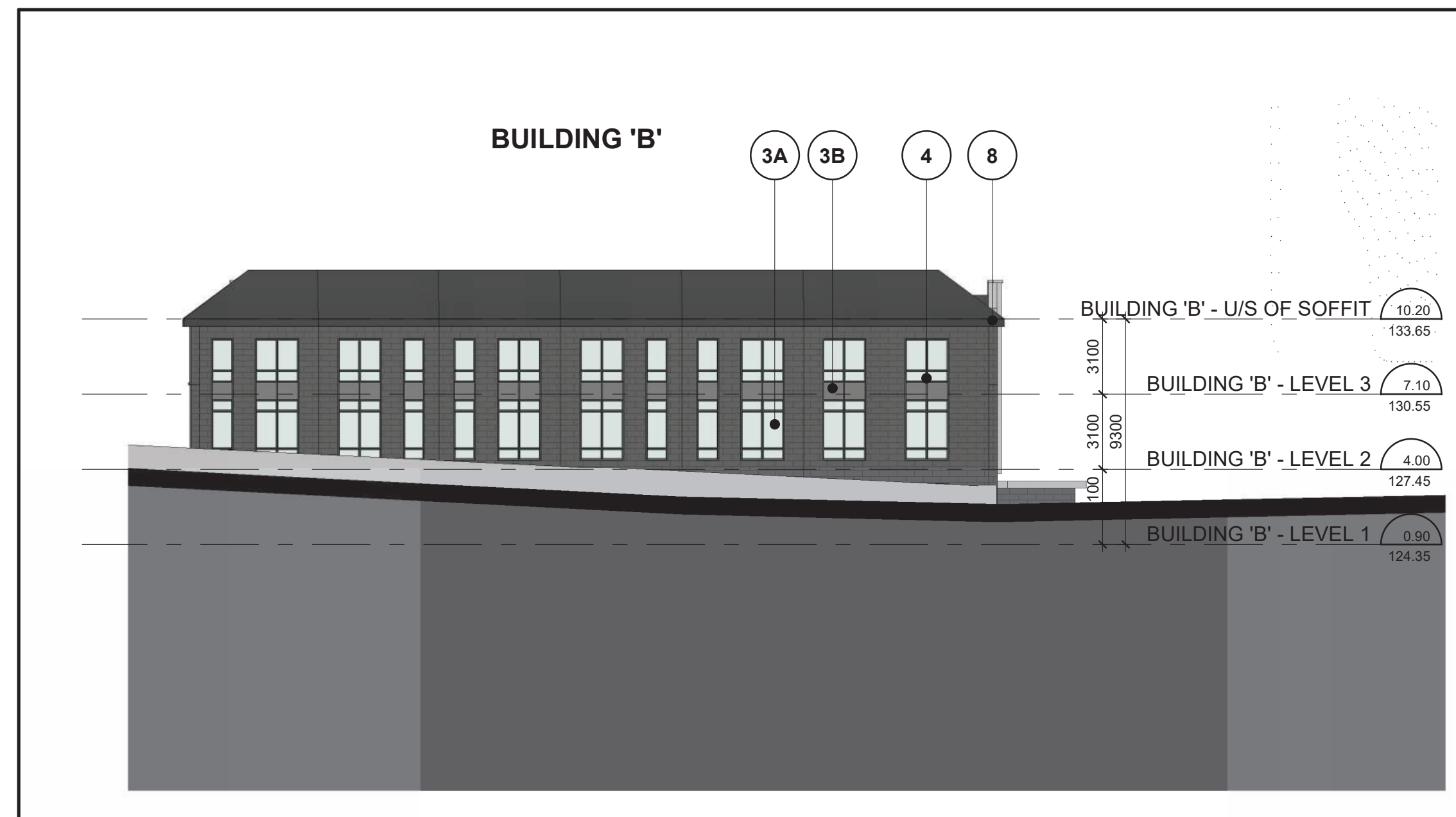
Oct. 25, 2022



Townhouse C&D - South Elevation 5  
1 : 200 dA4.05



Townhouse B - South Elevation 4  
1 : 200 dA4.05



Townhouse B - North Elevation 3  
1 : 200 dA4.05



Townhouse C&D - North Elevation 2  
1 : 200 dA4.05

EXTERIOR FINISH LEGEND

21115 - 805 DUNDAS STREET EAST

- 1A** ARCHITECTURAL PRE-CAST CONCRETE PANEL  
COLOUR : LIGHT  
MANUFACTURER : RES PRECAST INC.  
STYLE : SANDBLASTED
- 1B** ARCHITECTURAL PRE-CAST CONCRETE PANEL  
COLOUR : DARK  
MANUFACTURER : RES PRECAST INC.  
STYLE : SANDBLASTED
- 2** ARCHITECTURAL BRICK MASONRY  
COLOUR : DARK  
MANUFACTURER :  
STYLE : MODULAR
- 3A** PREFINISHED WINDOW WALL SYSTEM - VISION PANEL  
GLAZING : CLEAR  
MANUFACTURER : GUARDIAN SUNGUARD  
FRAMING : ALUMINUM
- 3B** PREFINISHED WINDOW WALL SYSTEM - GLASS SPANDREL PANEL  
GLASS COLOUR : #3-4595 GRAY THORN - VITRO CLEAR 6MM  
MANUFACTURER : OPACK-COAT-300  
FRAMING : ALUMINUM
- 3C** PREFINISHED WINDOW WALL SYSTEM - FRITTED VISION PANEL  
GLAZING : BIRD HET ETCH 21  
MANUFACTURER : GUARDIAN SUNGUARD  
FRAMING : ALUMINUM
- 4** PREFINISHED WINDOW WALL - METAL PANELS / MULLION  
COLOUR : DARK  
MANUFACTURER :  
METAL PANEL : PREFINISHED ALUMINUM
- 5** PREFINISHED WINDOW WALL - METAL PANELS  
COLOUR : COPPER  
MANUFACTURER :  
METAL PANEL : PREFINISHED ALUMINUM
- 6** MECHANICAL LOUVERS  
COLOUR : TO MATCH  
MANUFACTURER : .
- 7A** PREFINISHED CANOPY  
COLOUR : COPPER  
MANUFACTURER :  
METAL PANEL : PREFINISHED ALUMINUM
- 7B** PREFINISHED CANOPY  
COLOUR : LIGHT  
MANUFACTURER :  
METAL PANEL : PREFINISHED ALUMINUM
- 8** ROOF - SOFFIT WITH ROOF SHINGLE  
COLOUR : DARK  
MANUFACTURER : .
- 9A** PREFINISHED METAL ROOFING  
COLOUR : LIGHT  
MANUFACTURER :  
METAL PANEL : ALUMINUM
- 9B** PREFINISHED METAL ROOFING  
COLOUR : DARK  
MANUFACTURER :  
METAL PANEL : ALUMINUM
- 10A** PREFINISHED LOADING DOOR  
COLOUR : TO MATCH  
MANUFACTURER : .
- 10B** TOWNHOUSE GARAGE DOOR  
COLOUR : DARK  
MANUFACTURER :  
GLASS TYPE : TRANSLUCENT
- 11** TOWNHOUSE ENTRY DOOR  
COLOUR : COPPER  
MANUFACTURER : .
- R1** RAILING W/ TINTED GLASS AND SLAB COVERS  
MATERIAL : PREFINISHED ALUMINUM  
GLASS TYPE : TEMPERED

Exterior Finish Legend 1  
NTS dA4.05

All Drawings, Specifications, and Related Documents are the Copyright of the Architect. The Architect retains all rights to control all uses of these documents for the intended issuance/use as identified below. Reproduction of these Documents, without permission from the Architect, is strictly prohibited. The Authorities Having Jurisdiction are permitted to use, distribute, and reproduce these drawings for the intended issuance as noted and dated below, however the extended permission to the Authorities Having Jurisdiction in no way debases or limits the Copyright of the Architect, or control of use of these documents by the Architect.

Do not scale the drawings.  
This Drawing is Not To Be Used For Construction Until Signed By The Architect.  
Date:



20 De Boers Drive Suite 400  
Toronto, ON M3J 0H1

Revisions:		
No.:	Revision:	Date:
1	Rezoning Submission	Oct. 31, 2022

No.:	Issued For:	Date:
1	Rezoning Submission	Oct. 31, 2022

Client:  
**KJC PROPERTIES INC.**  
805 Dundas Street East, Mississauga, ON.  
Proposed Residential Development

Drawing Title:  
**Elevations - Townhouses**

Scale:  
**1 : 200**  
Drawn by:  
**D.S.**  
Checked by:  
**G.H.**  
Project No.:  
**21-115**  
Date:  
**Oct. 25, 2022**  
Drawing No.:

**dA4.05**

Plot Date: 10/25/2022 3:42:48 PM File Path: C:\Users\j2021\OneDrive\Documents\21115\21115.dwg Plot Date: 10/25/2022 3:42:48 PM File Path: C:\Users\j2021\OneDrive\Documents\21115\21115.dwg

Oct. 25, 2022

**EXTERIOR FINISH LEGEND**

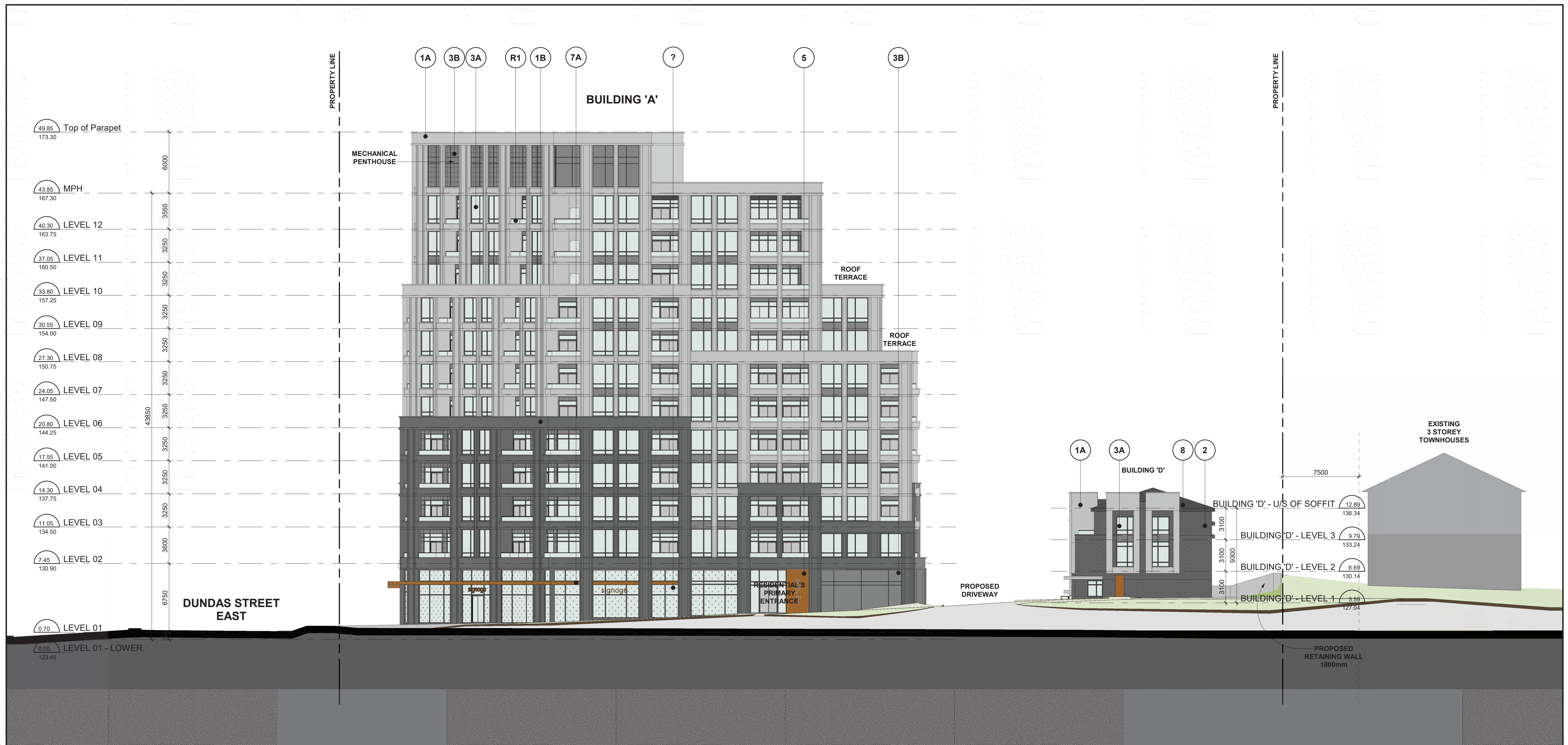
21115 - 805 DUNDAS STREET EAST

<p><b>1A</b> ARCHITECTURAL PRE-CAST CONCRETE PANEL COLOUR : LIGHT MANUFACTURER : RES PRECAST INC. STYLE : SANDBLASTED</p> <p><b>1B</b> ARCHITECTURAL PRE-CAST CONCRETE PANEL COLOUR : DARK MANUFACTURER : RES PRECAST INC. STYLE : SANDBLASTED</p> <p><b>2</b> ARCHITECTURAL BRICK MASONRY COLOUR : DARK MANUFACTURER : - STYLE : MODULAR</p> <p><b>3A</b> PREFINISHED WINDOW WALL SYSTEM - VISION PANEL GLAZING : CLEAR MANUFACTURER : GUARDIAN SUNGUARD FRAMING : ALUMINUM</p> <p><b>3B</b> PREFINISHED WINDOW WALL SYSTEM - GLASS SPANDREL PANEL GLASS COLOUR : #3-4595 GRAY THORN - VITRO CLEAR 6MM MANUFACTURER : OPACI-COAT-300 FRAMING : ALUMINUM</p> <p><b>3C</b> PREFINISHED WINDOW WALL SYSTEM - FRITTED VISION PANEL GLAZING : BIRD1st ETCH 21 MANUFACTURER : GUARDIAN SUNGUARD FRAMING : ALUMINUM</p>	<p><b>4</b> PREFINISHED WINDOW WALL - METAL PANELS / MULLION COLOUR : DARK MANUFACTURER : - METAL PANEL : PREFINISHED ALUMINUM</p> <p><b>5</b> PREFINISHED WINDOW WALL - METAL PANELS COLOUR : COPPER MANUFACTURER : - METAL PANEL : PREFINISHED ALUMINUM</p> <p><b>6</b> MECHANICAL LOUVERS COLOUR : TO MATCH MANUFACTURER : -</p> <p><b>7A</b> PREFINISHED CANOPY COLOUR : COPPER MANUFACTURER : - METAL PANEL : PREFINISHED ALUMINUM</p> <p><b>7B</b> PREFINISHED CANOPY COLOUR : LIGHT MANUFACTURER : - METAL PANEL : PREFINISHED ALUMINUM</p> <p><b>8</b> ROOF - SOFFIT WITH ROOF SHINGLE COLOUR : DARK MANUFACTURER : -</p>	<p><b>9A</b> PREFINISHED METAL ROOFING COLOUR : LIGHT MANUFACTURER : - METAL PANEL : ALUMINUM</p> <p><b>9B</b> PREFINISHED METAL ROOFING COLOUR : DARK MANUFACTURER : - METAL PANEL : ALUMINUM</p> <p><b>10A</b> PREFINISHED LOADING DOOR COLOUR : TO MATCH MANUFACTURER : -</p> <p><b>10B</b> TOWNHOUSE GARAGE DOOR COLOUR : DARK MANUFACTURER : - GLASS TYPE : TRANSLUCENT</p> <p><b>11</b> TOWNHOUSE ENTRY DOOR COLOUR : COPPER MANUFACTURER : -</p> <p><b>R1</b> RAILING W/ TINTED GLASS AND SLAB COVERS MATERIAL : PREFINISHED ALUMINUM GLASS TYPE : TEMPERED</p>
---	---	--

Exterior Finish Legend **2**  
NTS dA4.03

All Drawings, Specifications, and Related Documents are the Copyright of the Architect. The Architect retains all rights to control all uses of these documents for the intended issuance/use as identified below. Reproduction of these Documents, without permission from the Architect, is strictly prohibited. The Authorities Having Jurisdiction are permitted to use, distribute, and reproduce these drawings for the intended issuance as noted and dated below, however the extended permission to the Authorities Having Jurisdiction in no way debases or limits the Copyright of the Architect, or control of use of these documents by the Architect.

Do not scale the drawings.  
This Drawing is Not To Be Used For Construction Until Signed By The Architect.  
Date:



East Elevation **1**  
1 : 200 dA4.03

**KIRKOR**  
ARCHITECTS AND PLANNERS

20 De Boers Drive Suite 400  
Toronto, ON M3J 0H1

No.	Revision	Date
1	Rezoning Submission	Oct. 31, 2022

No.	Issued For	Date
1	Rezoning Submission	Oct. 31, 2022

Client:  
**KJC PROPERTIES INC.**  
805 Dundas Street East, Mississauga, ON.  
Proposed Residential Development

Drawing Title:  
**Elevations - Condominium**

Scale:  
**1 : 200**  
Drawn by:  
**D.S.**  
Checked by:  
**G.H.**  
Project No.:  
**21-115**  
Date:  
**Oct. 25, 2022**  
Drawing No.:

**dA4.03**

Plot Date: 10/26/2022 2:02:02 PM File Path: C:\Users\3201\Documents\21115\21115.dwg Plot Date: 10/26/2022 2:02:02 PM File Path: C:\Users\3201\Documents\21115\21115.dwg

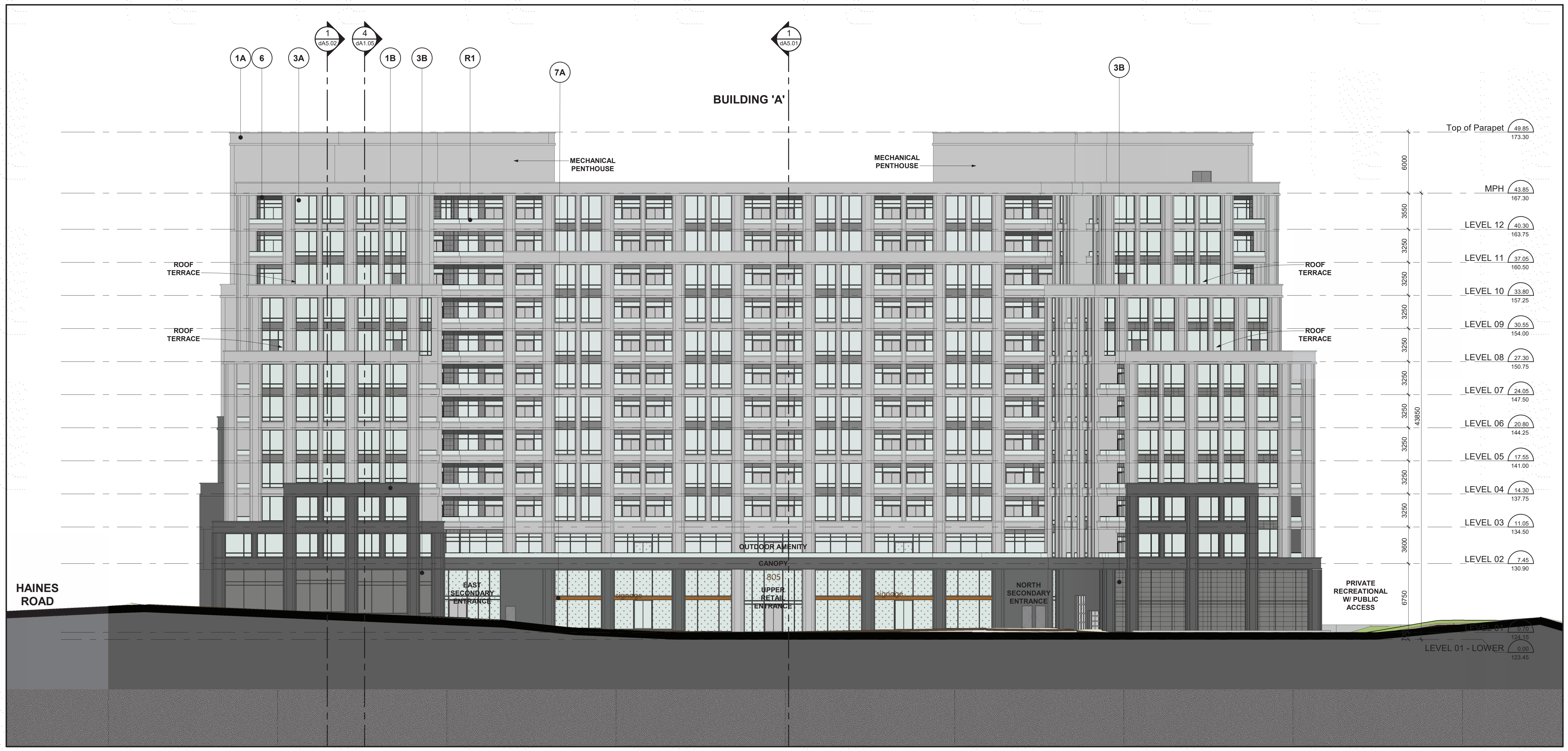
Oct. 25, 2022

**EXTERIOR FINISH LEGEND**

21115 - 805 DUNDAS STREET EAST

<p><b>1A</b> ARCHITECTURAL PRE-CAST CONCRETE PANEL COLOUR : LIGHT MANUFACTURER : RES PRECAST INC. STYLE : SANDBLASTED</p> <p><b>1B</b> ARCHITECTURAL PRE-CAST CONCRETE PANEL COLOUR : DARK MANUFACTURER : RES PRECAST INC. STYLE : SANDBLASTED</p> <p><b>2</b> ARCHITECTURAL BRICK MASONRY COLOUR : DARK MANUFACTURER : MODULAR</p> <p><b>3A</b> PREFINISHED WINDOW WALL SYSTEM - VISION PANEL GLAZING : CLEAR MANUFACTURER : GUARDIAN SUNGUARD FRAMING : ALUMINUM</p> <p><b>3B</b> PREFINISHED WINDOW WALL SYSTEM - GLASS SPANDREL PANEL GLASS COLOUR : #3-4595 GRAY THORN - VITRO CLEAR 6MM MANUFACTURER : OPACICOAT-300 FRAMING : ALUMINUM</p> <p><b>3C</b> PREFINISHED WINDOW WALL SYSTEM - FRITTED VISION PANEL GLAZING : BIRD1st ETCH 21 MANUFACTURER : GUARDIAN SUNGUARD FRAMING : ALUMINUM</p>	<p><b>4</b> PREFINISHED WINDOW WALL - METAL PANELS / MULLION COLOUR : DARK MANUFACTURER : - METAL PANEL : PREFINISHED ALUMINUM</p> <p><b>5</b> PREFINISHED WINDOW WALL - METAL PANELS COLOUR : COPPER MANUFACTURER : - METAL PANEL : PREFINISHED ALUMINUM</p> <p><b>6</b> MECHANICAL LOUVERS COLOUR : TO MATCH MANUFACTURER : -</p> <p><b>7A</b> PREFINISHED CANOPY COLOUR : COPPER MANUFACTURER : - METAL PANEL : PREFINISHED ALUMINUM</p> <p><b>7B</b> PREFINISHED CANOPY COLOUR : LIGHT MANUFACTURER : - METAL PANEL : PREFINISHED ALUMINUM</p> <p><b>8</b> ROOF - SOFFIT WITH ROOF SHINGLE COLOUR : DARK MANUFACTURER : -</p>	<p><b>9A</b> PREFINISHED METAL ROOFING COLOUR : LIGHT MANUFACTURER : - METAL PANEL : ALUMINUM</p> <p><b>9B</b> PREFINISHED METAL ROOFING COLOUR : DARK MANUFACTURER : - METAL PANEL : ALUMINUM</p> <p><b>10A</b> PREFINISHED LOADING DOOR COLOUR : TO MATCH MANUFACTURER : -</p> <p><b>10B</b> TOWNHOUSE GARAGE DOOR COLOUR : DARK MANUFACTURER : - GLASS TYPE : TRANSLUCENT</p> <p><b>11</b> TOWNHOUSE ENTRY DOOR COLOUR : COPPER MANUFACTURER : -</p> <p><b>R1</b> RAILING W/ TINTED GLASS AND SLAB COVERS MATERIAL : PREFINISHED ALUMINUM GLASS TYPE : TEMPERED</p>
--	---	--

Exterior Finish Legend **2**  
NTS dA4.02



North Elevation **1**  
1 : 200 dA4.02

**KIRKOR**  
ARCHITECTS AND PLANNERS

20 De Boers Drive Suite 400  
Toronto, ON M3J 0H1

Revisions:  
No. Revision Date

No.	Revision	Date
1	Rezoning Submission	Oct. 31, 2022

Client:  
**KJC PROPERTIES INC.**  
805 Dundas Street East, Mississauga, ON.  
Proposed Residential Development

Drawing Title:  
**Elevations - Condominium**

Scale:  
**1 : 200**  
Drawn by:  
**D.S.**  
Checked by:  
**G.H.**  
Project No.:  
**21-115**  
Date:  
**Oct. 25, 2022**  
Drawing No.:

**dA4.02**

Plot Date: 10/25/2022 3:45:18 PM File Path: C:\Users\3201\1110911\_205\_Dundas Street East.dwg Plot Date: 10/25/2022 3:45:18 PM

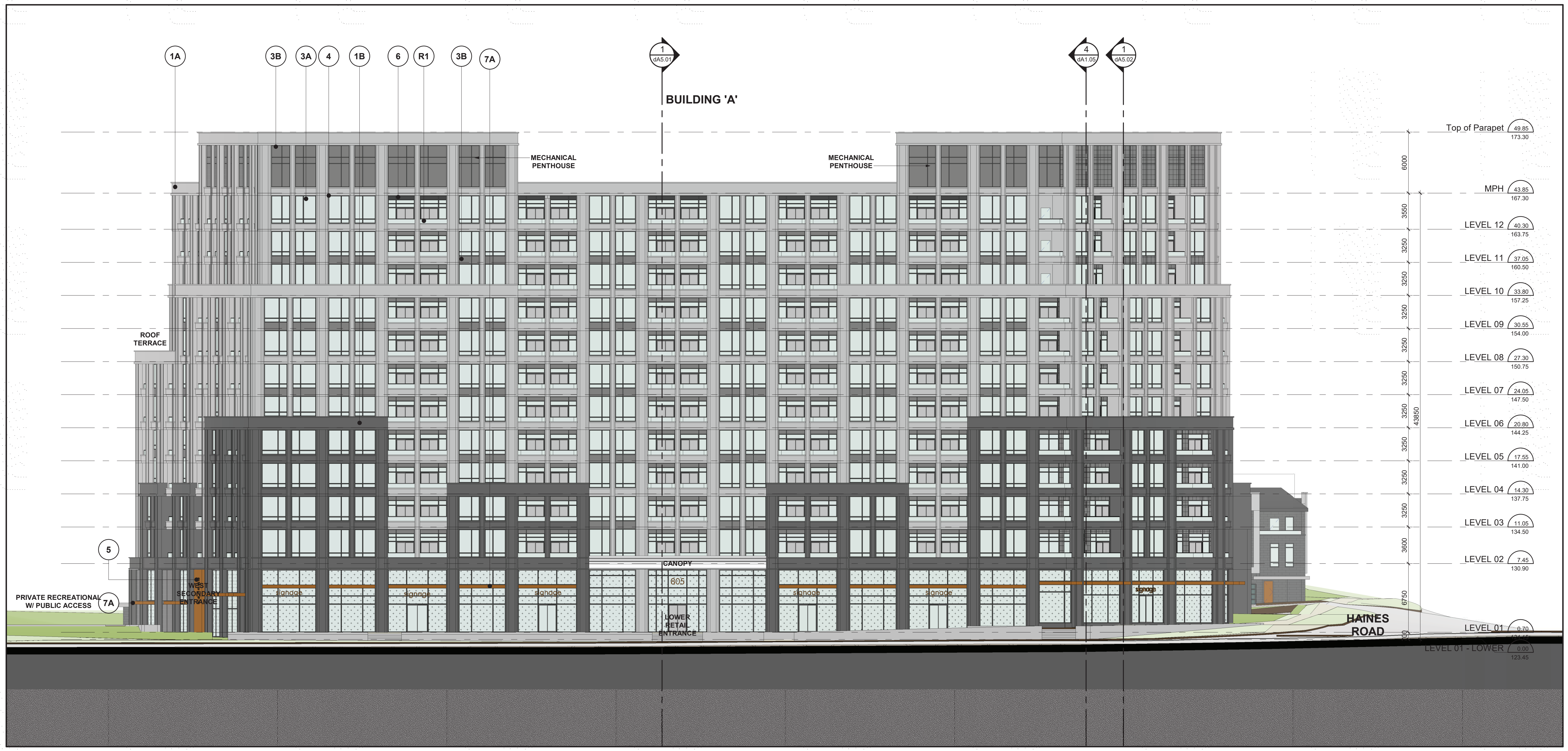
Oct. 25, 2022

**EXTERIOR FINISH LEGEND**

21115 - 805 DUNDAS STREET EAST

<p><b>ARCHITECTURAL PRE-CAST CONCRETE PANEL</b></p> <p><b>1A</b> COLOUR : LIGHT MANUFACTURER : RES PRECAST INC. STYLE : SANDBLASTED</p> <p><b>1B</b> COLOUR : DARK MANUFACTURER : RES PRECAST INC. STYLE : SANDBLASTED</p> <p><b>2</b> <b>ARCHITECTURAL BRICK MASONRY</b> COLOUR : DARK MANUFACTURER : MODULAR STYLE : MODULAR</p> <p><b>3A</b> <b>PREFINISHED WINDOW WALL SYSTEM - VISION PANEL</b> GLAZING : CLEAR MANUFACTURER : GUARDIAN SUNGUARD FRAMING : ALUMINUM</p> <p><b>3B</b> <b>PREFINISHED WINDOW WALL SYSTEM - GLASS SPANDREL PANEL</b> GLASS COLOUR : #3-4595 GRAY THORN - VITRO CLEAR 6MM MANUFACTURER : OPACI-COAT-300 FRAMING : ALUMINUM</p> <p><b>3C</b> <b>PREFINISHED WINDOW WALL SYSTEM - FRITTED VISION PANEL</b> GLAZING : BIRD1st ETCH 21 MANUFACTURER : GUARDIAN SUNGUARD FRAMING : ALUMINUM</p>	<p><b>PREFINISHED WINDOW WALL - METAL PANELS / MULLION</b></p> <p><b>4</b> COLOUR : DARK MANUFACTURER : - METAL PANEL : PREFINISHED ALUMINUM</p> <p><b>5</b> COLOUR : COPPER MANUFACTURER : - METAL PANEL : PREFINISHED ALUMINUM</p> <p><b>6</b> <b>MECHANICAL LOUVERS</b> COLOUR : TO MATCH MANUFACTURER : -</p> <p><b>7A</b> <b>PREFINISHED CANOPY</b> COLOUR : COPPER MANUFACTURER : - METAL PANEL : PREFINISHED ALUMINUM</p> <p><b>7B</b> <b>PREFINISHED GLAZING</b> COLOUR : LIGHT MANUFACTURER : - METAL PANEL : PREFINISHED ALUMINUM</p> <p><b>8</b> <b>ROOF - SOFFIT WITH ROOF SHINGLE</b> COLOUR : DARK MANUFACTURER : -</p>	<p><b>PREFINISHED METAL ROOFING</b></p> <p><b>9A</b> COLOUR : LIGHT MANUFACTURER : - METAL PANEL : ALUMINUM</p> <p><b>9B</b> COLOUR : DARK MANUFACTURER : - METAL PANEL : ALUMINUM</p> <p><b>10A</b> <b>PREFINISHED LOADING DOOR</b> COLOUR : TO MATCH MANUFACTURER : -</p> <p><b>10B</b> <b>TOWNHOUSE GARAGE DOOR</b> COLOUR : DARK MANUFACTURER : - GLASS TYPE : TRANSLUCENT</p> <p><b>11</b> <b>TOWNHOUSE ENTRY DOOR</b> COLOUR : COPPER MANUFACTURER : -</p> <p><b>R1</b> <b>RAILING W/ TINTED GLASS AND SLAB COVERS</b> MATERIAL : PREFINISHED ALUMINUM GLASS TYPE : TEMPERED</p>
---	---	--

Exterior Finish Legend **2**  
NTS **dA4.01**



South Elevation **1**  
1 : 200 **dA4.01**

**KIRKOR**  
ARCHITECTS AND PLANNERS

20 De Boers Drive Suite 400  
Toronto, ON M3J 0H1

Revisions:  
No. Revision Date

1 Rezoning Submission Oct. 31, 2022

No. Issued For Date

Client:  
**KJC PROPERTIES INC.**

805 Dundas Street East, Mississauga, ON.  
Proposed Residential Development

Drawing Title:  
**Elevations - Condominium**

Scale:  
**1 : 200**  
Drawn by:  
**D.S.**  
Checked by:  
**G.H.**  
Project No.:  
**21-115**  
Date:  
**Oct. 25, 2022**  
Drawing No.:

**dA4.01**

Plot Date: 10/25/2022 3:45:05 PM File Path: C:\Users\G301\111121\205\_Dundas Street East.dwg Plot Date: 10/25/2022 3:45:05 PM

Oct. 25, 2022

**EXTERIOR FINISH LEGEND**

21115 - 805 DUNDAS STREET EAST

<p><b>1A</b> ARCHITECTURAL PRE-CAST CONCRETE PANEL COLOUR : LIGHT MANUFACTURER : RES PRECAST INC. STYLE : SANDBLASTED</p> <p><b>1B</b> ARCHITECTURAL PRE-CAST CONCRETE PANEL COLOUR : DARK MANUFACTURER : RES PRECAST INC. STYLE : SANDBLASTED</p> <p><b>2</b> ARCHITECTURAL BRICK MASONRY COLOUR : DARK MANUFACTURER : MODULAR</p> <p><b>3A</b> PREFINISHED WINDOW WALL SYSTEM - VISION PANEL GLAZING : CLEAR MANUFACTURER : GUARDIAN SUNGUARD FRAMING : ALUMINUM</p> <p><b>3B</b> PREFINISHED WINDOW WALL SYSTEM - GLASS SPANDREL PANEL GLASS COLOUR : #3-4595 GRAY THORN - VITRO CLEAR 6MM MANUFACTURER : OPACI-COAT-300 FRAMING : ALUMINUM</p> <p><b>3C</b> PREFINISHED WINDOW WALL SYSTEM - FRITTED VISION PANEL GLAZING : BIRD1st ETCH 21 MANUFACTURER : GUARDIAN SUNGUARD FRAMING : ALUMINUM</p>	<p><b>4</b> PREFINISHED WINDOW WALL - METAL PANELS / MULLION COLOUR : DARK MANUFACTURER : - METAL PANEL : PREFINISHED ALUMINUM</p> <p><b>5</b> PREFINISHED WINDOW WALL - METAL PANELS COLOUR : COPPER MANUFACTURER : - METAL PANEL : PREFINISHED ALUMINUM</p> <p><b>6</b> MECHANICAL LOUVERS COLOUR : TO MATCH MANUFACTURER : -</p> <p><b>7A</b> PREFINISHED CANOPY COLOUR : COPPER MANUFACTURER : - METAL PANEL : PREFINISHED ALUMINUM</p> <p><b>7B</b> PREFINISHED CANOPY COLOUR : LIGHT MANUFACTURER : - METAL PANEL : PREFINISHED ALUMINUM</p> <p><b>8</b> ROOF - SOFFIT WITH ROOF SHINGLE COLOUR : DARK MANUFACTURER : -</p>	<p><b>9A</b> PREFINISHED METAL ROOFING COLOUR : LIGHT MANUFACTURER : - METAL PANEL : ALUMINUM</p> <p><b>9B</b> PREFINISHED METAL ROOFING COLOUR : DARK MANUFACTURER : - METAL PANEL : ALUMINUM</p> <p><b>10A</b> PREFINISHED LOADING DOOR COLOUR : TO MATCH MANUFACTURER : -</p> <p><b>10B</b> TOWNHOUSE GARAGE DOOR COLOUR : DARK MANUFACTURER : - GLASS TYPE : TRANSLUCENT</p> <p><b>11</b> TOWNHOUSE ENTRY DOOR COLOUR : COPPER MANUFACTURER : -</p> <p><b>R1</b> RAILING W/ TINTED GLASS AND SLAB COVERS MATERIAL : PREFINISHED ALUMINUM GLASS TYPE : TEMPERED</p>
---	---	--

Exterior Finish Legend **2**  
NTS dA4.04

**KIRKOR**  
ARCHITECTS AND PLANNERS

20 De Boers Drive Suite 400  
Toronto, ON M3J 0H1

No.	Revision	Date

1	Rezoning Submission	Oct. 31, 2022
---	---------------------	---------------

Client:  
**KJC PROPERTIES INC.**

805 Dundas Street East, Mississauga, ON.  
Proposed Residential Development

Drawing Title:  
**Elevations -  
Condominium**

Scale:  
**1 : 200**  
Drawn by:  
**D.S.**  
Checked by:  
**G.H.**  
Project No.:  
**21-115**  
Date:  
**Oct. 25, 2022**  
Drawing No.:

**dA4.04**



West Elevation **1**  
1 : 200 dA4.04