

Oct. 25, 2022

All Drawings, Specifications, and Related Documents are the Copyright of the Architect. The Architect retains all rights to control all uses of these documents for the intended issuance/use as identified below. Reproduction of these Documents, without permission from the Architect, is strictly prohibited. The Authorities Having Jurisdiction are permitted to use, distribute, and reproduce these drawings for the intended issuance as noted and dated below, however the extended permission to the Authorities Having Jurisdiction in no way debases or limits the Copyright of the Architect, or control of use of these documents by the Architect.

Do not scale the drawings.  
This Drawing is Not To Be Used For Construction Until Signed By The Architect.  
Date:



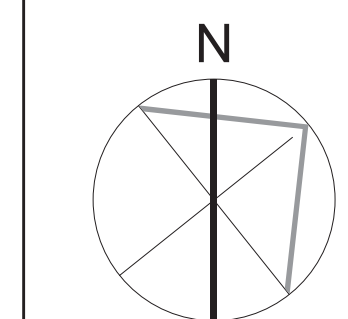
Revisions:  
No. Revision: Date:

1	Rezoning Submission	Oct. 31, 2022
No.:	Issued For:	Date:

Client:  
**KJC PROPERTIES INC.**  
805 Dundas Street East, Mississauga, ON.  
Proposed Residential Development

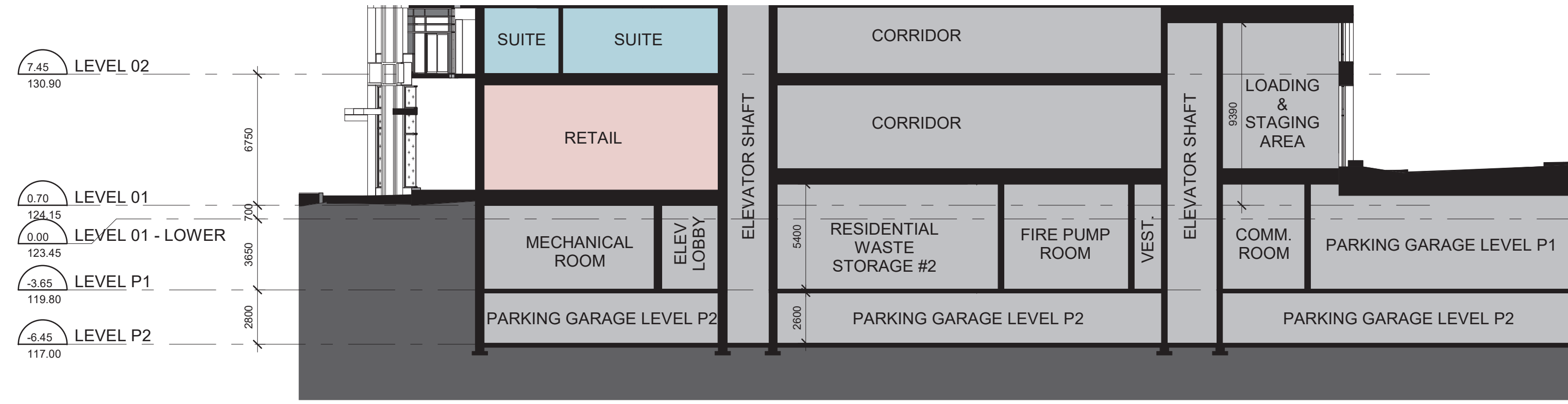
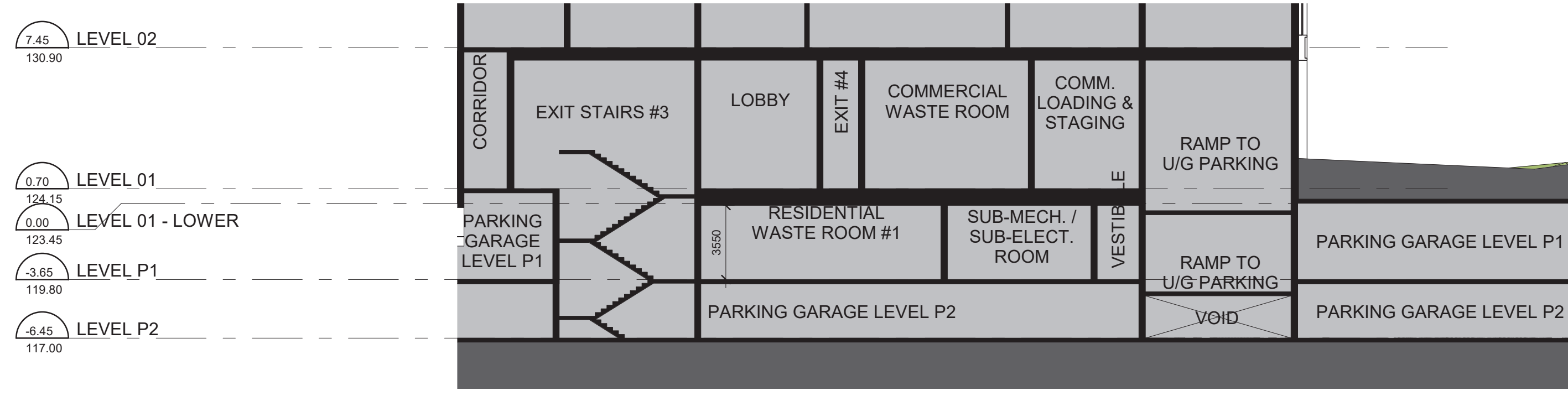
**Waste Management Plans**

Scale:  
1 : 200  
Drawn by:  
G.H.  
Checked by:  
G.H.  
Project No.:  
21-115  
Date:  
Oct. 25, 2022  
Drawing No.:



**dA1.05**

**Retail Loading Section 5**  
1 : 200 dA1.05



**Residential Loading Section 4**  
1 : 200 dA1.05

Residential Waste Room #1 indicates the size on the drawing as 107.05m<sup>2</sup>

Streams	Equipment	Length (m)	Width (m)	Number of Totes	M2
Mixed Containers	3-yard Container	2.03	2.01	4	16.3212
Mixed Paper	3-yard Container	2.03	2.01	4	16.3212
Glass	95 gallon/360 L Totes	0.89	0.69	1	0.6141
Organics	3-yard Container	2.03	1.07	3	6.5163
Cardboard	3-yard Container	2.03	2.01	1	4.0803
E-waste	95 gallon/360 L Totes	0.89	0.69	1	0.6141
Waste	3-yard Container	2.03	2.01	3	12.2409
Compactor	Tri Sorter	2.71	0.933	1	2.52843
<b>TOTAL m2</b>					<b>59.23653</b>

Weekly Anticipated Waste/Recycling Weight

Residential Weekly Generation	Kg's
Cans/Bottles/Glass Jars	24.39
Glass Bottles	1.41
Mixed Fibres	30.74
Organic/Compost	47.49
E-waste, Light Bulbs, Scrap Metal, Batteries	0.20
Non-recyclable waste	26.57
<b>Total Generation</b>	<b>130.80</b>

Residential Waste Room #2 indicates the size on the drawing as 170.24m<sup>2</sup>

Streams	Equipment	Length (m)	Width (m)	Number of Totes	M2
Mixed Containers	3-yard Container	2.03	2.01	4	16.3212
Mixed Paper	3-yard Container	2.03	2.01	4	16.3212
Glass	95 gallon/360 L Totes	0.89	0.69	1	0.6141
Organics	3-yard Container	2.03	1.07	3	6.5163
Cardboard	3-yard Container	2.03	2.01	1	4.0803
E-waste	95 gallon/360 L Totes	0.89	0.69	1	0.6141
Waste	3-yard Container	2.03	2.01	3	12.2409
Compactor	Tri Sorter	2.71	0.933	1	2.52843
<b>TOTAL m2</b>					<b>59.23653</b>

Weekly Anticipated Waste/Recycling Weight

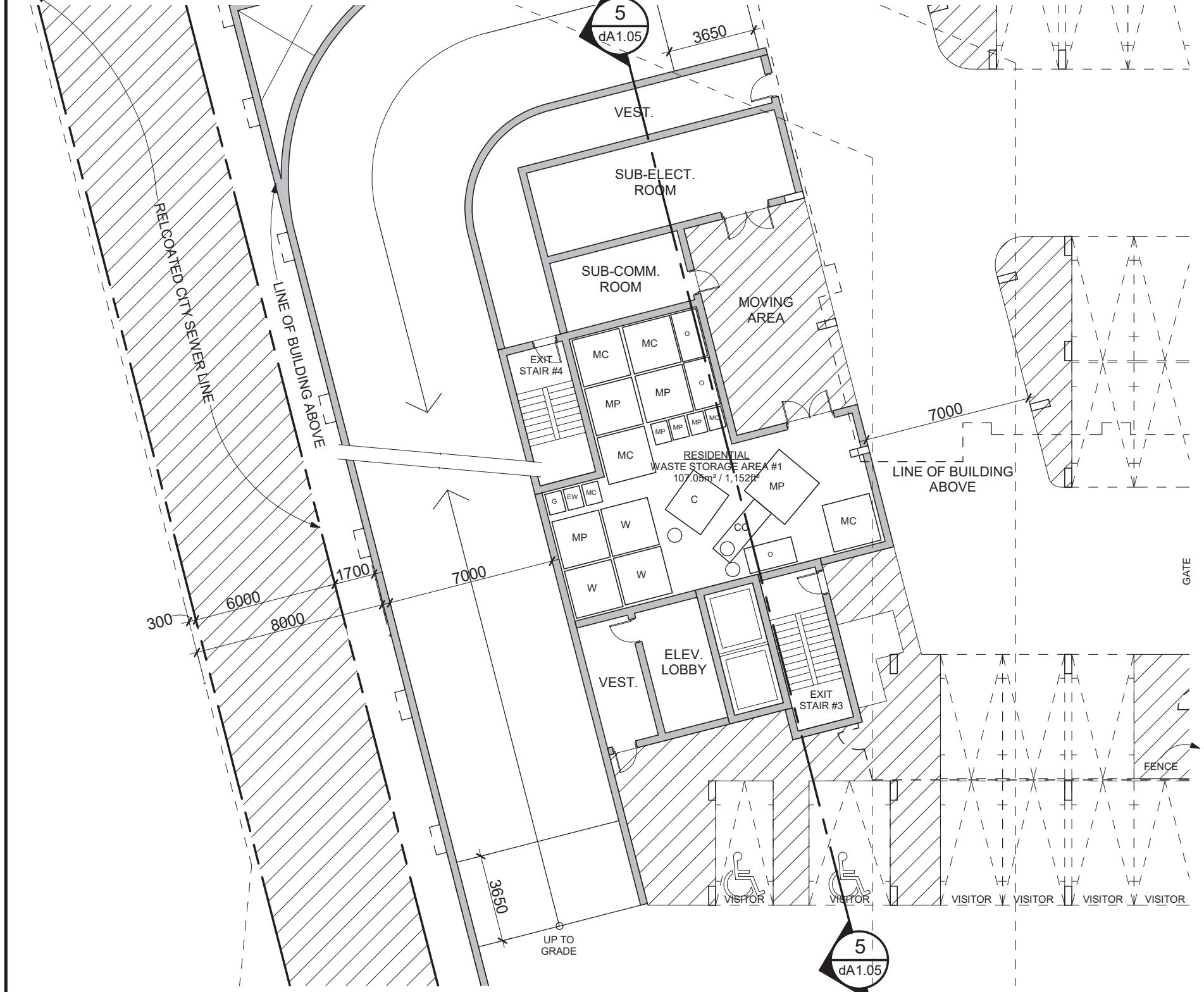
Townhome Residential Weekly Generation	Kg's
Cans/Bottles/Glass Jars	24.39
Glass Bottles	1.41
Mixed Fibres	30.74
Organic/Compost	47.49
E-waste, Light Bulbs, Scrap Metal, Batteries	0.20
Non-recyclable waste	26.57
<b>Total Generation</b>	<b>130.80</b>

Town Homes Waste Room indicates the size on the drawing as 21.37m<sup>2</sup>

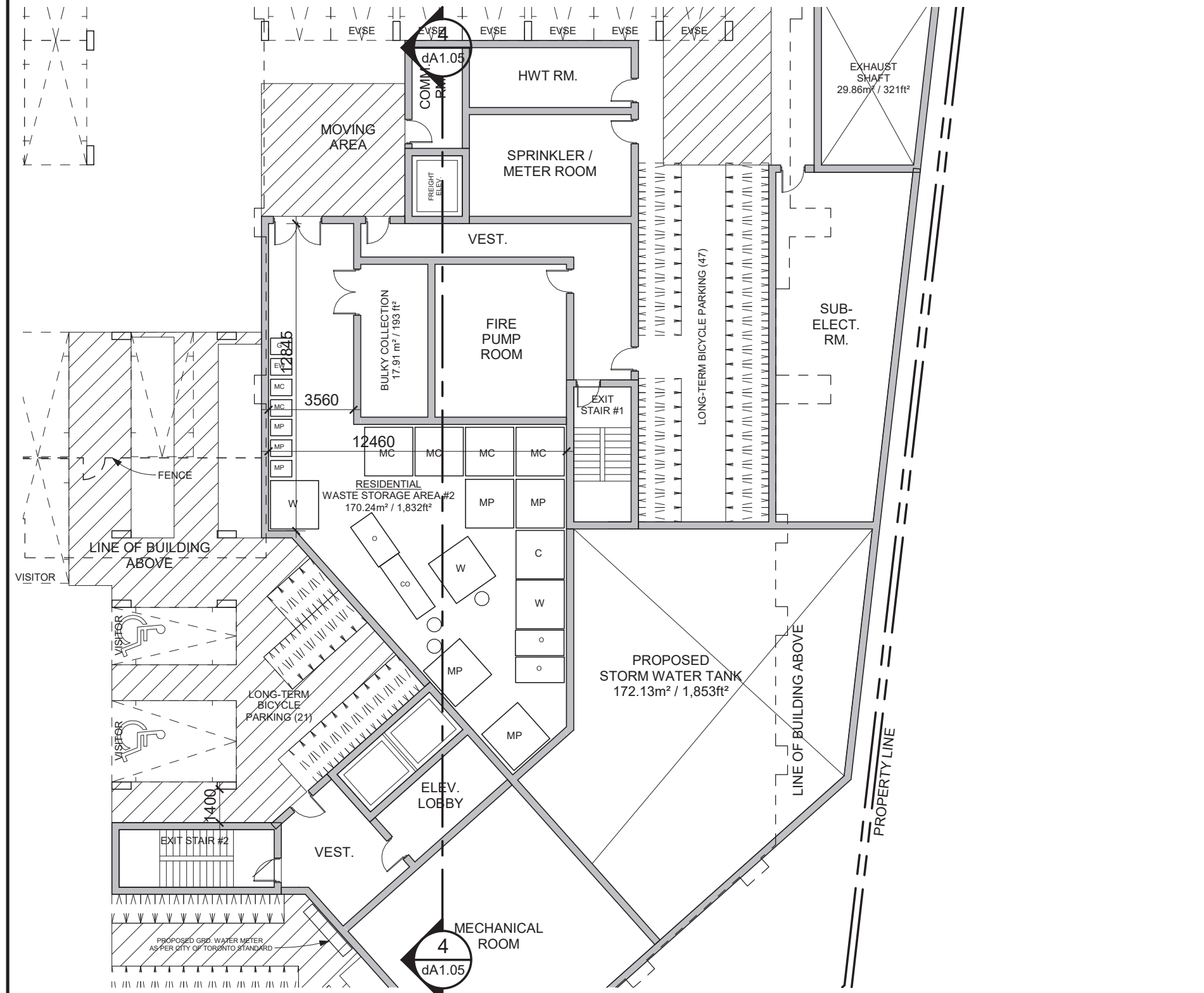
Streams	Equipment	Length (m)	Width (m)	Number of Equipment	M2
Mixed Containers	95 gallon/360 L Totes	0.89	0.69	1	0.61
Mixed Paper	95 gallon/360 L Totes	0.89	0.69	1	0.61
Organics	64 gallon/240 L Totes	0.64	0.51	3	0.98
Waste	Cart	1.836	0.851	2	3.12
<b>TOTAL m2</b>					<b>5.33</b>

Weekly Anticipated Waste/Recycling Weight

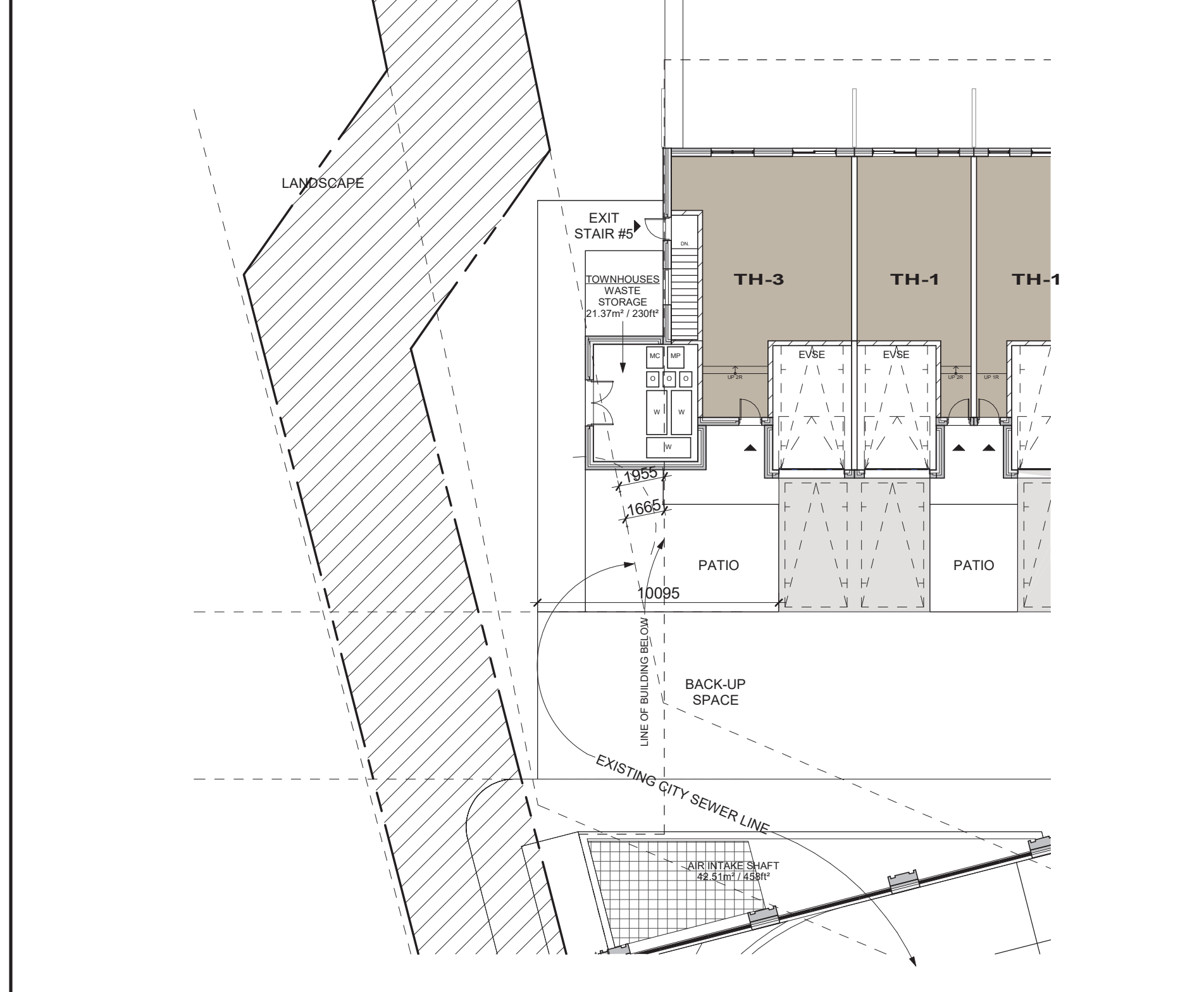
Townhome Residential Weekly Generation	Kg's
Cans/Bottles/Glass Jars	24.39
Glass Bottles	1.41
Mixed Fibres	30.74
Organic/Compost	47.49
E-waste, Light Bulbs, Scrap Metal, Batteries	0.20
Non-recyclable waste	26.57
<b>Total Generation</b>	<b>130.80</b>



**Residential Waste Room #1 - Floor Plan Level P1** 3  
1 : 200 dA1.05



**Residential Waste Room #2 - Floor Plan Level P1** 2  
1 : 200 dA1.05



**Townhouse Waste Room - Floor Plan Level 1** 1  
1 : 200 dA1.05

Commercial Waste Room indicates the size on the drawing as 58.25m<sup>2</sup>

Streams	Equipment	Length (m)	Width (m)	Number of Equipment	M2
Mixed Containers	95 gallon/360 L Totes	0.89	0.69	3	1.8423
Mixed Paper	95 gallon/360 L Totes	0.89	0.69	3	1.8423
Glass	95 gallon/360 L Totes	0.89	0.69	1	0.5141
Organics	64 gallon/240 L Totes	0.64	0.51	8	2.6112
Cardboard	4-yard Container	2.03	2.01	3	12.2409
Cardboard Baler	Baler	1.39	1.71	1	3.4029
Used Cooking Oil System	Holding Tank	1.07	1.07	1	1.1449
Used Cooking Oil System	Collection Cart	0.985	0.305	2	0.5885
Waste	4-yard Container	2.03	2.01	3	12.2409
TOTAL m2					36.52815

Weekly Anticipated Waste/Recycling Weight	
<b>Retail Weekly Generation</b>	<b>56%</b>
Cardboard	235.2
Cans/Bottles/Glass Jars	75.60
Mixed Fibres	100.80
Organic/Compost	168.00
E-waste, Light Bulbs, Scrap Metal, Batteries	6.40
Non-recyclable waste	252.00
<b>Total Generation</b>	<b>604.80</b>

Oct. 25, 2022

All Drawings, Specifications, and Related Documents are the Copyright of the Architect. The Architect retains all rights to control all uses of these documents for the intended issuance/use as identified below. Reproduction of these Documents, without permission from the Architect, is strictly prohibited. The Authorities Having Jurisdiction are permitted to use, distribute, and reproduce these drawings for the intended issuance as noted and dated below, however the extended permission to the Authorities Having Jurisdiction in no way debases or limits the Copyright of the Architect, or control of use of these documents by the Architect.

Do not scale the drawings.  
This Drawing is Not To Be Used For Construction Until Signed By The Architect.  
Date:

**KIRKOR**  
ARCHITECTS AND PLANNERS  
20 De Boers Drive Suite 400  
Toronto, ON M3J 0H1

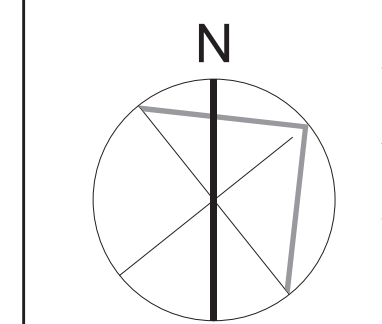
No.:	Revision:	Date:

1	Rezoning Submission	Oct. 31, 2022
---	---------------------	---------------

Client:  
**KJC PROPERTIES INC.**  
805 Dundas Street East, Mississauga, ON.  
Proposed Residential Development

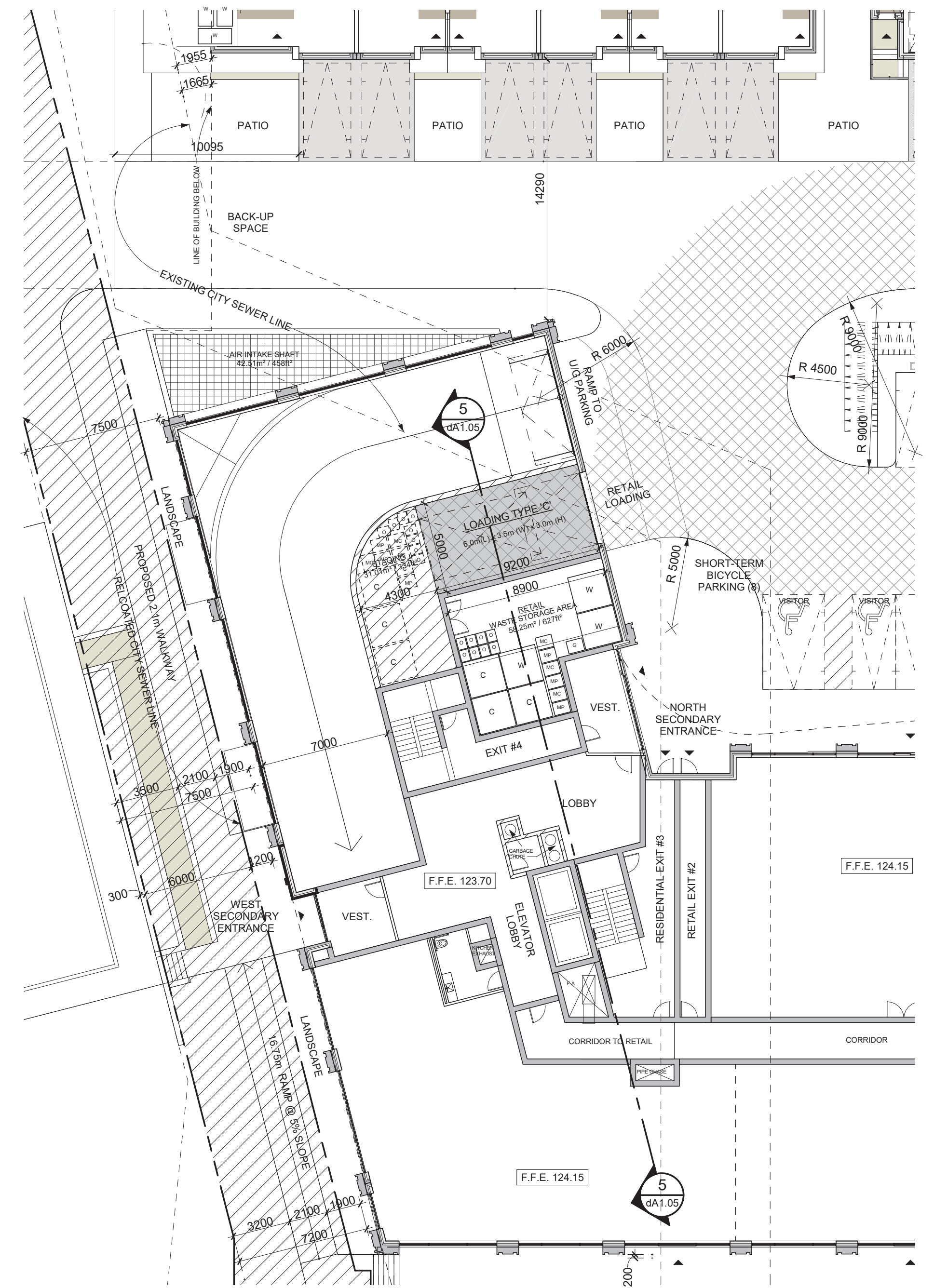
Drawing Title:  
**Waste Management Plans**

Scale:  
1 : 200  
Drawn by:  
Author  
Checked by:  
Checker  
Project No.:  
21-115  
Date:  
Oct. 25, 2022  
Drawing No.:

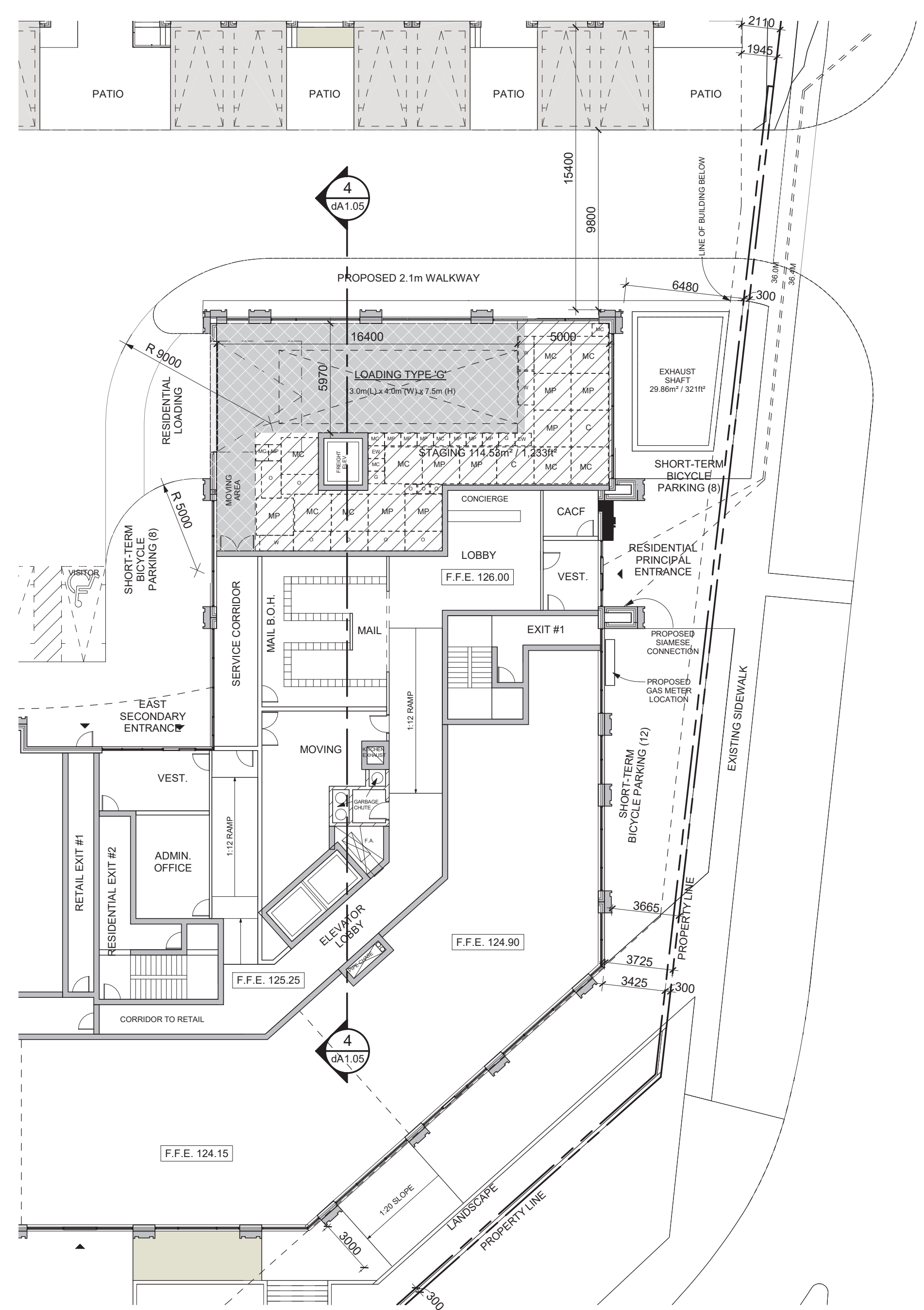


**dA1.06**

Plot Date: 10/26/2022 3:42:25 PM File Path: C:\Users\j2021\11119211\_005\_Dundas Street East.dwg Plot Date: 10/26/2022 3:42:25 PM



Retail Waste Area and Loading - Floor Plan Level 1 2  
1 : 200 dA1.06



Residential Loading - Floor Plan Level 1 1  
1 : 200 dA1.06