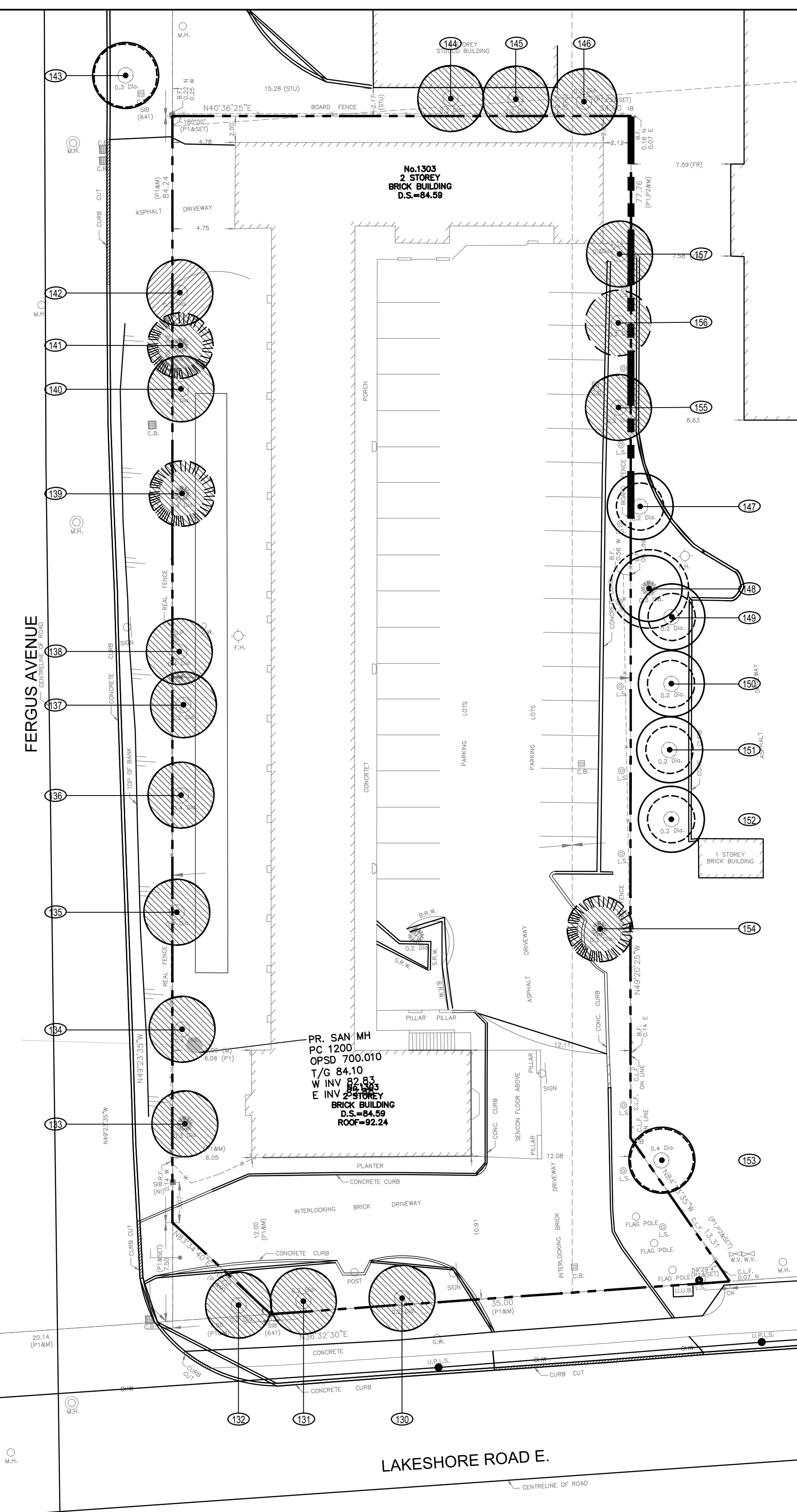
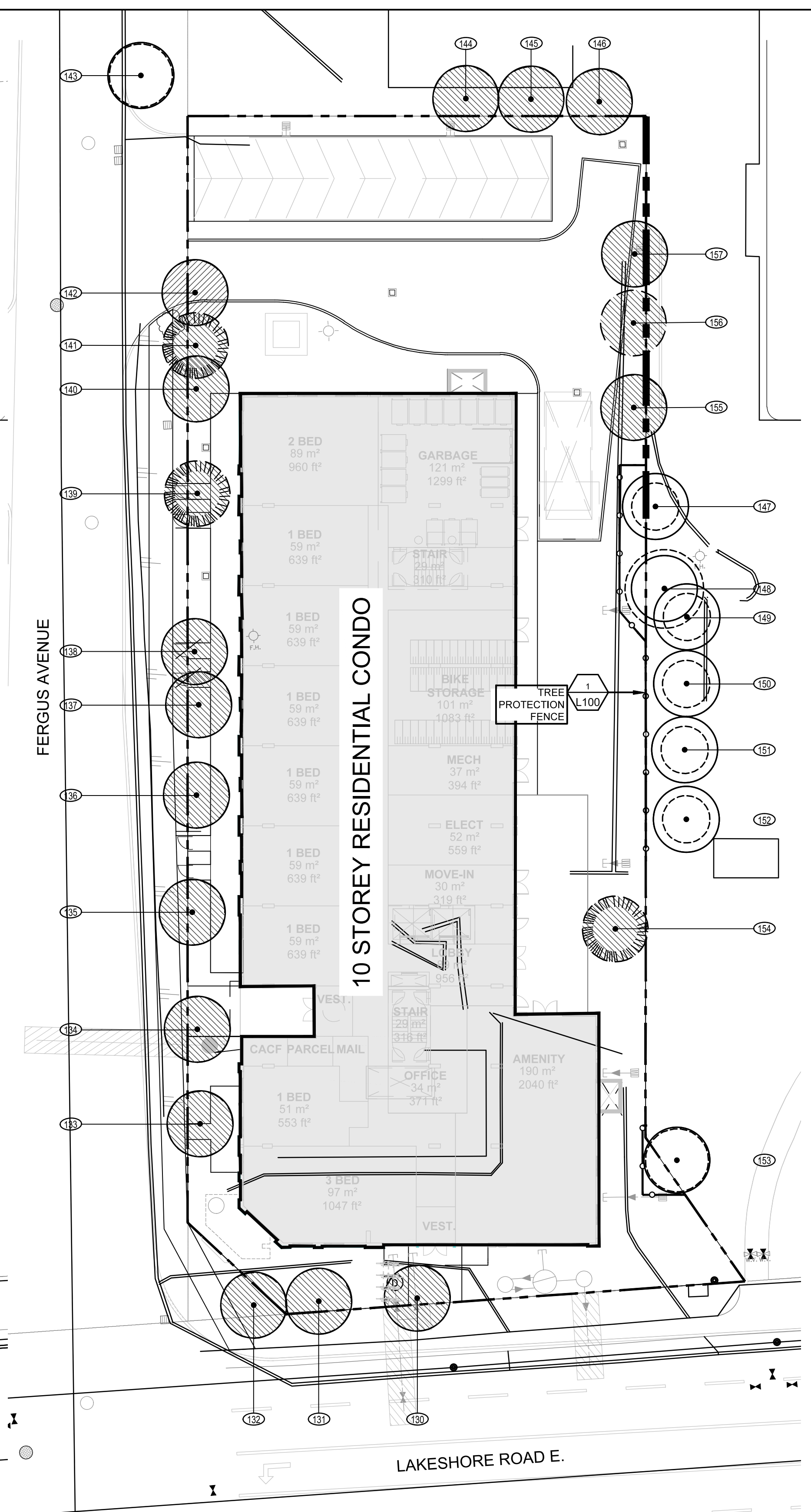


user: wk Wong file: L:\LPL_Projects\2021-073 - Lakeshore Road East Cond\1.0 ZBA Phase\CAD\2021-073 - Lakeshore Road East Cond\1.0 ZBA Phase\2021-073 - Lakeshore Road East Cond\1.0 ZBA Phase.dwg plot: Feb 13, 2023 - 11:06am



EXISTING CONDITIONS PLAN

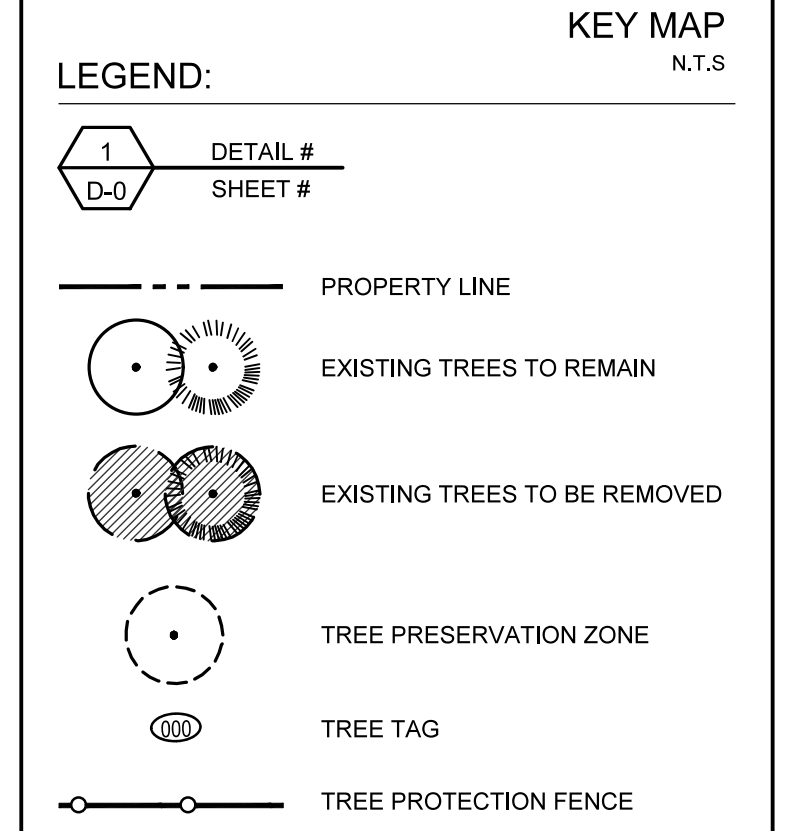
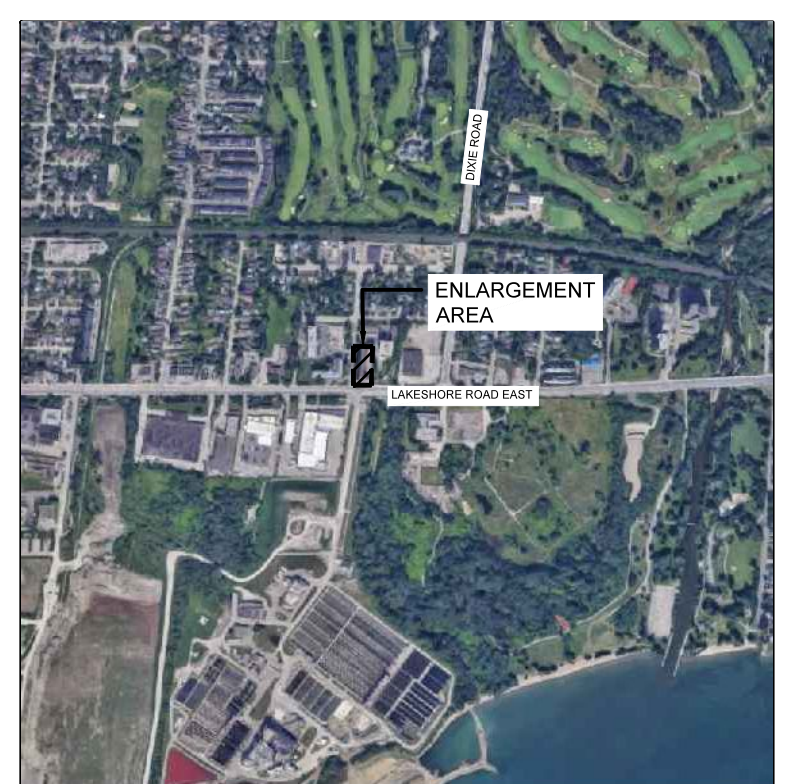
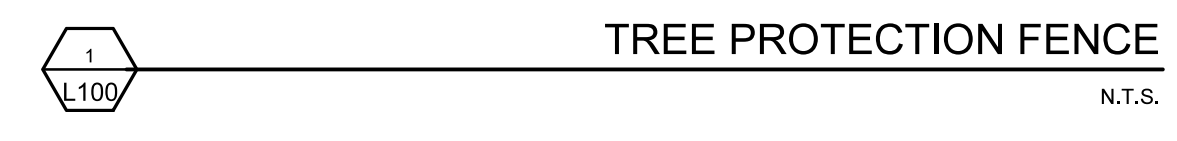
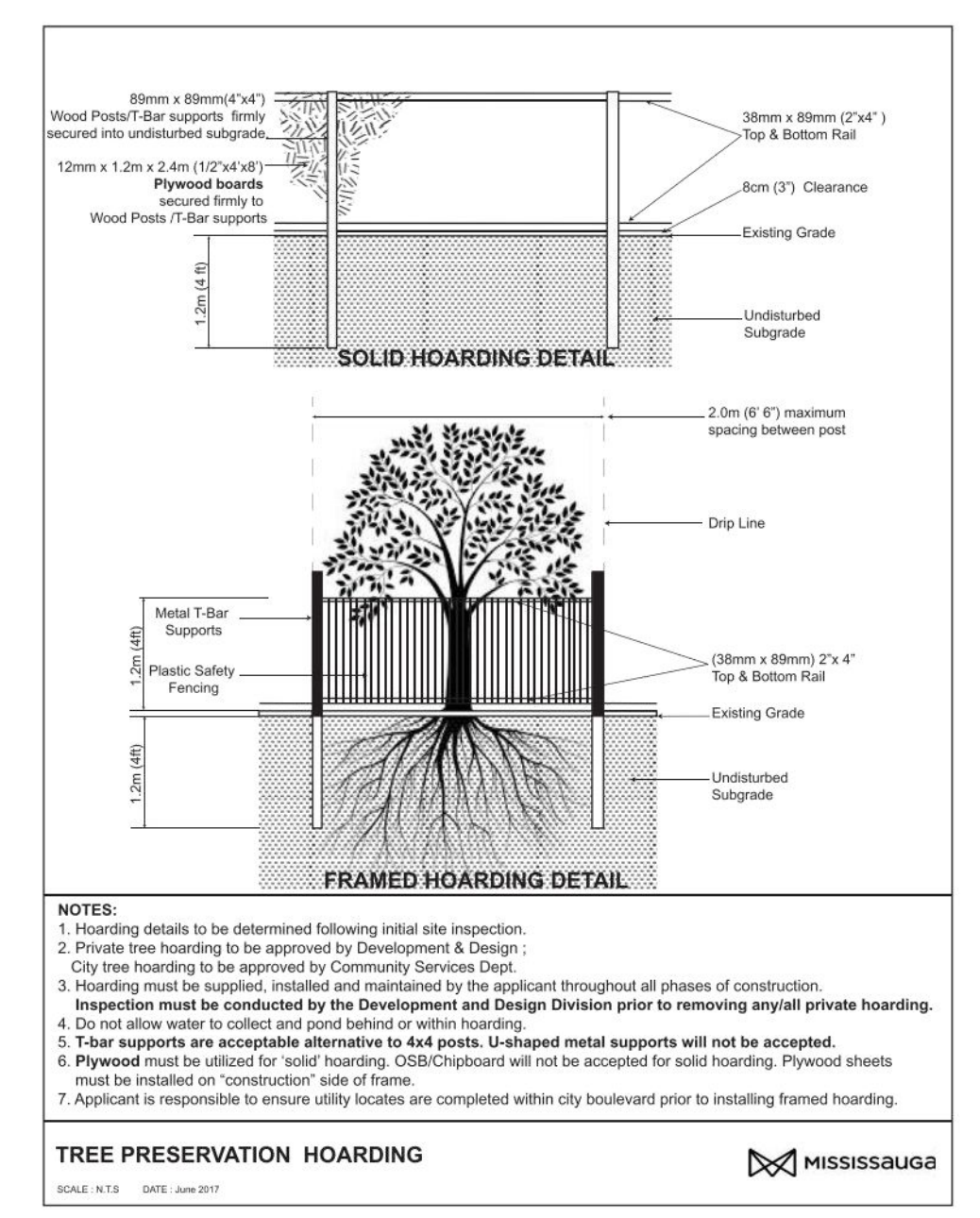
1:250



TREE PRESERVATION AND REMOVALS PLAN

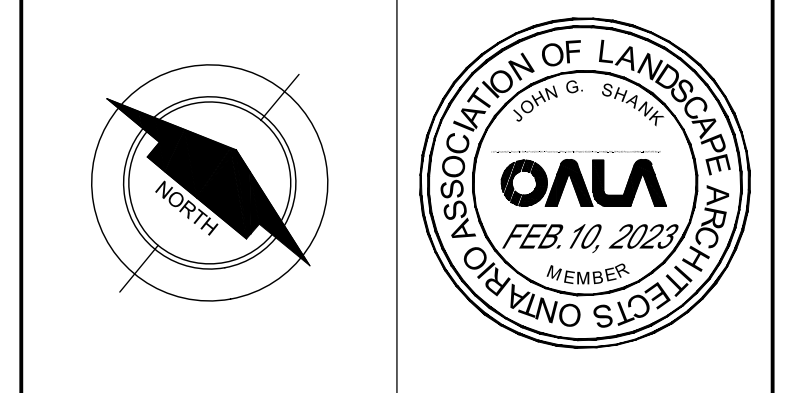
1:250

| Tree Inventory - Lakeshore Road E | | | | | | | | | |
|-----------------------------------|-----------------|--------------------------------|-------|--------|-----------|--|--|---|--|
| Tag # | Common Name | Diameter at Breast Height (cm) | Crown | Health | Structure | Notes | Tree TPFZ | Recommendations Based on Site Plan | |
| 130 | Crab Apple | 25 | 5 | G | G | minor deadwood | 1.8m | Tree to be Removed, Within Construction Limits | |
| 131 | Crab Apple | 23 | 5 | G | F | minor deadwood, trunk lean, suckering at base, cavity | 1.8m | Tree to be Removed, Within Construction Limits | |
| 132 | Crab Apple | 25 | 5 | G | G | minor deadwood | 1.8m | Tree to be Removed, Within Construction Limits | |
| 133 | Norway Maple | 26 | 7.50 | G | F | Cavity, Trunk lean, Growing into Cedar Hedge | 1.8m | Tree to be Removed, Within Construction Limits | |
| 134 | Honey Locust | 26 | 38 | 7 | F | F | Codominant stems, Minor deadwood one sided form, crowded by adjacent trees | 1.8m | Tree to be Removed, Within Construction Limits |
| 135 | Honey Locust | 45 | 13 | F | F | Codominant stems, Minor deadwood cavity, one sided form, crowded by adjacent trees | 3m | Tree to be Removed, Within Construction Limits | |
| 136 | Honey Locust | 51 | 10 | F | F | Crowded by Adjacent Tree, Understory crowding | 3.6m | Tree to be Removed, Within Construction Limits | |
| 137 | Norway Maple | 19 | 6 | G | G | Crowded by Adjacent Tree | 1.8m | Tree to be Removed, Within Construction Limits | |
| 138 | Honey Locust | 30 | 5 | F | F | Codominant stems, growing into Hydroline, weak branch union | 2.4m | Tree to be Removed, Within Construction Limits | |
| 139 | Serbian Spruce | 44 | 8 | G | G | Suckering at base, Exposed roots, Elevated Lower Branching | 3m | Tree to be Removed, Within Construction Limits | |
| 140 | Norway Maple | 45 | 8 | F | F | Crowded by Adjacent Tree | 3m | Tree to be Removed, Within Construction Limits | |
| 141 | Serbian Spruce | 31 | 5 | P | P | Crowded by Adjacent Tree | 2.4m | Tree to be Removed, Within Construction Limits | |
| 142 | Norway Maple | 32 | 8 | F | F | Crowded by Adjacent Tree | 2.4m | Tree to be Removed, Within Construction Limits | |
| 143 | Norway Maple | 37 | 6 | G | G | On Neighbouring Property | 2.4m | Tree to Remain, Preserve and Protect | |
| 144 | Norway Maple | 26 | 6 | G | G | Crowded by Adjacent Tree | 1.8m | Tree to be Removed, Within Construction Limits - with Owner's consent | |
| 145 | Norway Maple | 29 | 6 | G | G | Crowded by Adjacent Tree | 1.8m | Tree to be Removed, Within Construction Limits - with Owner's consent | |
| 146 | Norway Maple | 30 | 6 | G | G | Crowded by Adjacent Tree | 2.4m | Tree to be Removed, Within Construction Limits - with Owner's consent | |
| 147 | Norway Maple | 29 | 6 | G | G | Crowded by Adjacent Tree, On Neighbouring Property | 1.8m | Tree to Remain, Preserve and Protect | |
| 148 | Austrian Pine | 42 | 6 | G | G | Crowded by Adjacent Tree, Trunk Lean, On Neighbouring Property | 3m | Tree to Remain, Preserve and Protect | |
| 149 | Norway Maple | 28 | 6 | G | G | Crowded by Adjacent Tree, On Neighbouring Property | 1.8m | Tree to Remain, Preserve and Protect | |
| 150 | Norway Maple | 25 | 6 | G | G | Crowded by Adjacent Tree, Girdling Roots, On Neighbouring Property | 1.8m | Tree to Remain, Preserve and Protect | |
| 151 | Norway Maple | 22 | 6 | G | G | Crowded by Adjacent Tree, Girdling Roots, On Neighbouring Property | 1.8m | Tree to Remain, Preserve and Protect | |
| 152 | Norway Maple | 28 | 6 | G | G | Trunk lean, On Neighbouring Property | 1.8m | Tree to Remain, Preserve and Protect | |
| 153 | Norway Maple | 37 | 6 | F | F | Minor deadwood, On Neighbouring Property | 2.4m | Tree to Remain, Preserve and Protect | |
| 154 | Colorado Spruce | 21 | 5 | G | G | | 1.8m | Tree to be Removed, Within Construction Limits | |
| 155 | Linden | 30 | 4 | F | F | Suckering at base | 2.4m | Tree to be Removed, Within Construction Limits | |
| 156 | Linden | 30 | 4 | F | F | Crowded by Adjacent Tree | 2.4m | Tree to be Removed, Within Construction Limits | |
| 157 | Linden | 32 | 5 | F | F | | 2.4m | Tree to be Removed, Within Construction Limits | |



| | | | |
|-----|-------------------|------------|----|
| | | | |
| R2 | RE-ISSUED FOR ZBA | 2023-02-13 | WK |
| RT | RE-ISSUED FOR ZBA | 2022-09-01 | SG |
| RD | RE-ISSUED FOR ZBA | 2021-08-30 | RS |
| no. | revision | date | by |

THESE DRAWINGS ARE THE PROPERTY OF LANDSCAPE PLANNING LIMITED AND SHALL NOT BE ALTERED, MODIFIED, REVISED OR CHANGED WITHOUT THE WRITTEN CONSENT OF LANDSCAPE PLANNING LIMITED. SEAL IS NOT VALID WITHOUT SIGNATURE OF THE LANDSCAPE ARCHITECT. DRAWINGS CANNOT BE USED FOR TENDER/CONSTRUCTION UNTIL SIGNED BY LANDSCAPE ARCHITECT.



project number
2021-073



project title
1303 LAKESHORE ROAD E

city file: OZ/OPA 21-20 W1
municipality: MISSISSAUGA

drawing title
TREE INVENTORY, PRESERVATION & REMOVALS PLAN

| | | |
|-------------------|-------------------|--------------------------------|
| drawn by RS | reviewed by SG | drawing number: L100 |
| date JULY 2021 | scale 1:250 | |