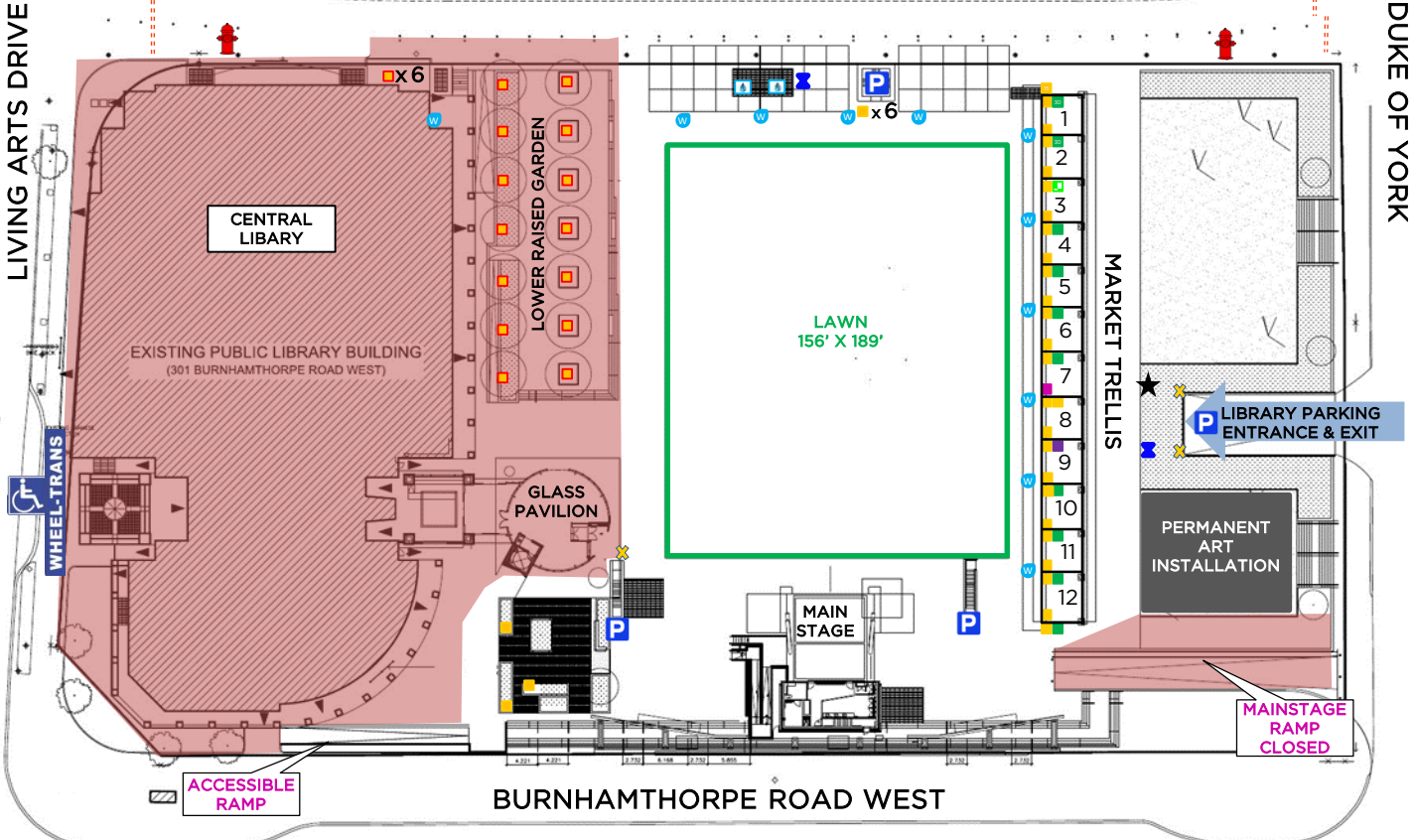
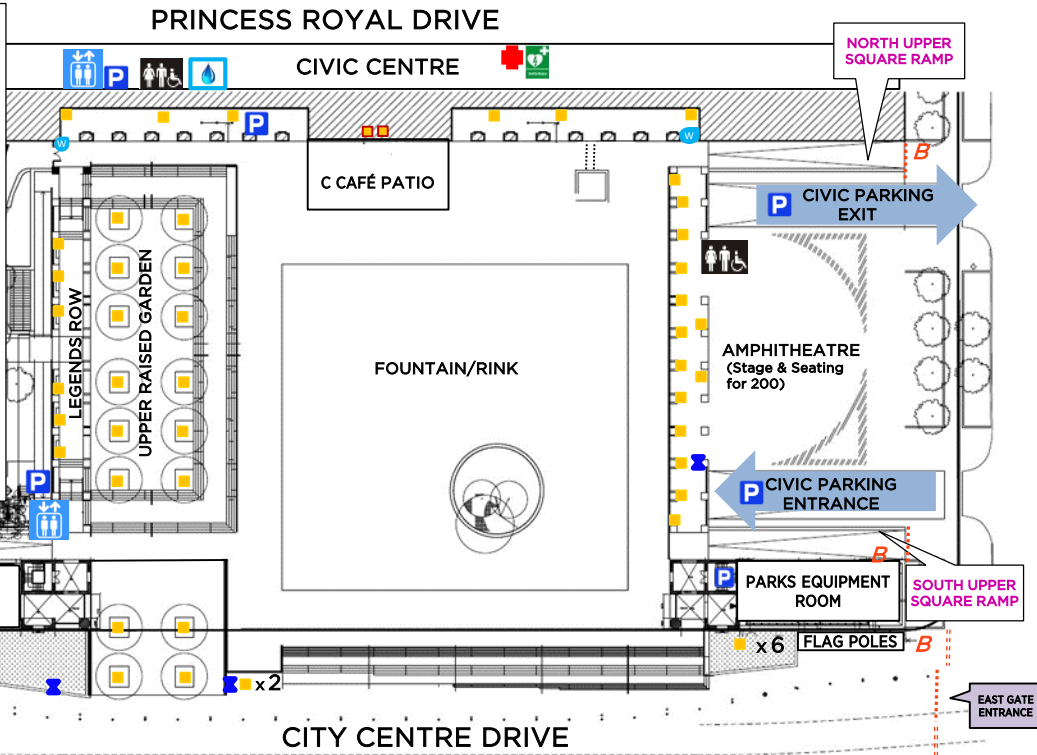


# 2023 MCS ELECTRICAL MAP

## LEGEND

- 15amp 120V
- 15amp 120V accessed by chord
- 30amp 120/208V twist lock
- 30amp 208V
- 50amp 120/208V
- 60amp 120/208V
- ⚡ Power cart (2) *by request only*
- ⚡ Pass-through *by request only*
- ⚡ Potable Water Hookup
- ★ Grey water sink
- 🔥 Fire Hydrant
- 💧 Water Bottle Filling Station
- 🚑 First Aid Kit
- 🚑 Automated External Defibrillator
- 🅑 Access to parking
- ♿ Accessible Washroom
- 🚗 Elevator to parking
- ⋯ Automatic bollard
- ⋯ Permanent bollard
- B Bollard access panel



- Each Market Trellis bay has two 15 amp 120V circuits; one on either side of the bay
  - Market Trellis Bays #1, #5 & #12: 30amp 120/208V circuits (in addition to 15amp circuit on both sides of each pillar)
  - Market Trellis Bay #9: 50amp 125/208V pin sleeve (in addition to 15amp circuit on both sides of each pillar)
  - Market Trellis Bay #7: 60amp 120/208V straight pin plug (in addition to 15amp circuit on both sides of each pillar)
  - Market Trellis Bay #3: 30amp 208V single phase circuit (in addition to 15 amp circuit on both sides of each pillar)
  - ***We have (2) power carts available***, there are (5) options for locations *if requested in advance*: 15amp 120V power with **24 circuits**
  - Each vendor must supply their own extension cords, and cable mats rated for outdoor use in safe working condition
- If electrical requirements exceed what is available on this map, a private electrical contractor may be arranged by the organizer at the organizer's expense to for running cable, laying cable mats and plugging into any distribution panels.***