

DESIGN DETAILS OF EROSION AND SEDIMENT CONTROL MEASURES (STAGE 1)

1. INSTALL MUD MAT
2. INSTALL TREE HOARDING AS INDICATED ON LANDSCAPE PLANS.
3. INSTALL SEDIMENT CONTROL FENCE
4. INSTALL TEMPORARY SEDIMENT TRAP
5. INSTALL CONVEYANCE SWALES C/W ROCK CHECK DAMS

SEE DRAWING C101A FOR ALL EROSION AND SEDIMENT CONTROL NOTES AND DETAILS.

NOTES:

1. ALL EXISTING DOMESTIC WELLS AND SANITARY SEPTIC SYSTEMS TO BE DECOMMISSIONED AND DISPOSED OFFSITE.

INSTALLATION & MAINTENANCE CONSIDERATIONS FOR TEMP. SEDIMENT TRAP

1. SEDIMENT TRAP MUST BE CONSTRUCTED PRIOR TO ANY CONSTRUCTION ACTIVITIES EXCEPT FOR TOPSOIL STRIPPING AND GRADING OPERATIONS ASSOCIATED WITH THE CONSTRUCTION OF THE SEDIMENT TRAP
2. PROPER COMPACTION CONTROL MUST BE USED WHEN CONSTRUCTING THE EMBANKMENT TO ENSURE ITS STABILITY
3. THE EMERGENCY SPILLWAY INSTALLATION IS CRITICAL TO PREVENTING FAILURE OF THE STRUCTURE DURING HIGH FLOWS AND ALL SPECIFICATIONS PROVIDED BY THE DESIGNER MUST BE FOLLOWED.
5. SEDIMENT ACCUMULATION IN THE TRAP MUST BE MEASURED A MINIMUM OF ONCE EVERY SIX (6) MONTHS. THE BASIN WILL REQUIRE CLEANING WHEN SEDIMENT ACCUMULATION REACHES 50% OF THE DESIGN CAPACITY.
6. SEDIMENT TRAP EMBANKMENTS, AND SPILLWAY SHOULD BE INSPECTED WEEKLY AND AFTER EACH RAINFALL AND SIGNIFICANT SNOWMELT EVENTS.

NOTES

8. AT-SOURCE AND CONVEYANCE ESC MEASURES MUST BE USED IN ADDITION TO THE SEDIMENT TRAP

INSTALLATION & MAINTENANCE CONSIDERATIONS FOR TEMP. SEDIMENT TRAP

1. SEDIMENT TRAP MUST BE CONSTRUCTED PRIOR TO ANY CONSTRUCTION ACTIVITIES EXCEPT FOR TOPSOIL STRIPPING AND GRADING OPERATIONS ASSOCIATED WITH THE CONSTRUCTION OF THE SEDIMENT TRAP
2. PROPER COMPACTION CONTROL MUST BE USED WHEN CONSTRUCTING THE EMBANKMENT TO ENSURE ITS STABILITY
3. THE EMERGENCY SPILLWAY INSTALLATION IS CRITICAL TO PREVENTING FAILURE OF THE STRUCTURE DURING HIGH FLOWS AND ALL SPECIFICATIONS PROVIDED BY THE DESIGNER MUST BE FOLLOWED.
5. SEDIMENT ACCUMULATION IN THE TRAP MUST BE MEASURED A MINIMUM OF ONCE EVERY SIX (6) MONTHS. THE BASIN WILL REQUIRE CLEANING WHEN SEDIMENT ACCUMULATION REACHES 50% OF THE DESIGN CAPACITY.
6. SEDIMENT TRAP EMBANKMENTS, AND SPILLWAY SHOULD BE INSPECTED WEEKLY AND AFTER EACH RAINFALL AND SIGNIFICANT SNOWMELT EVENTS.

NOTES

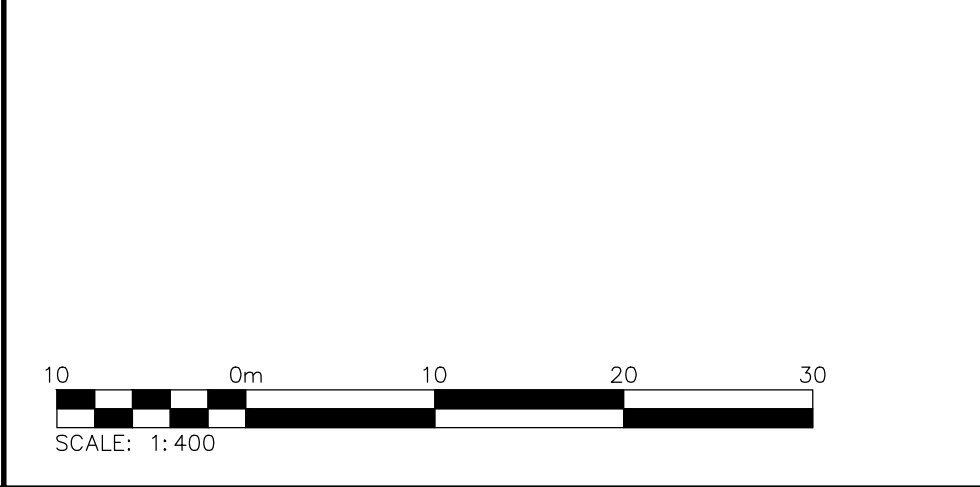
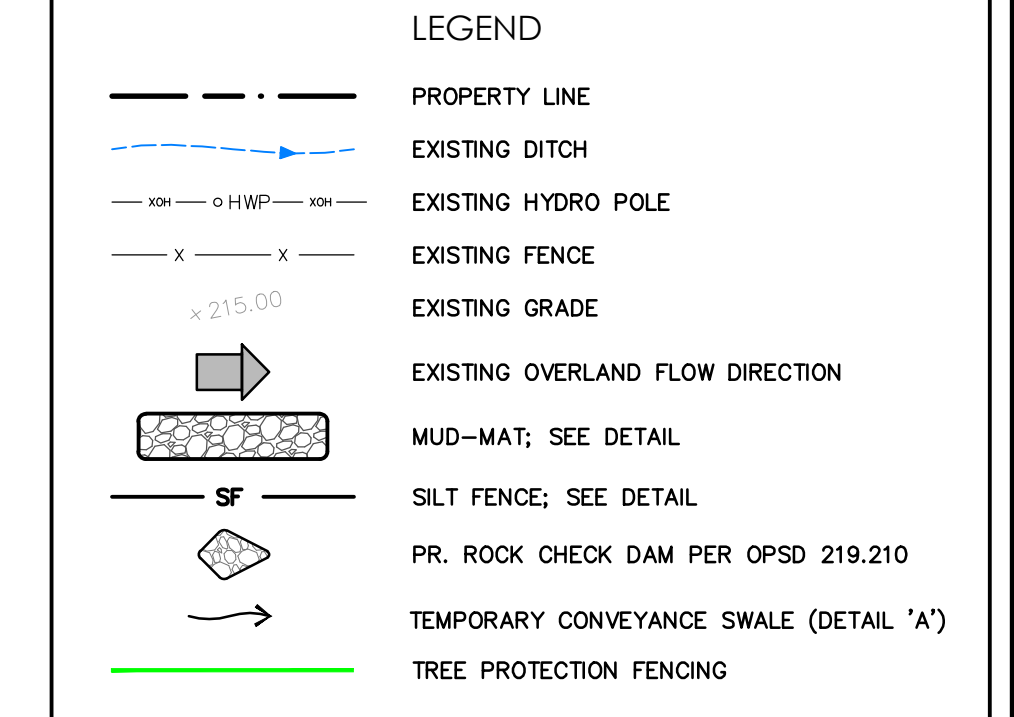
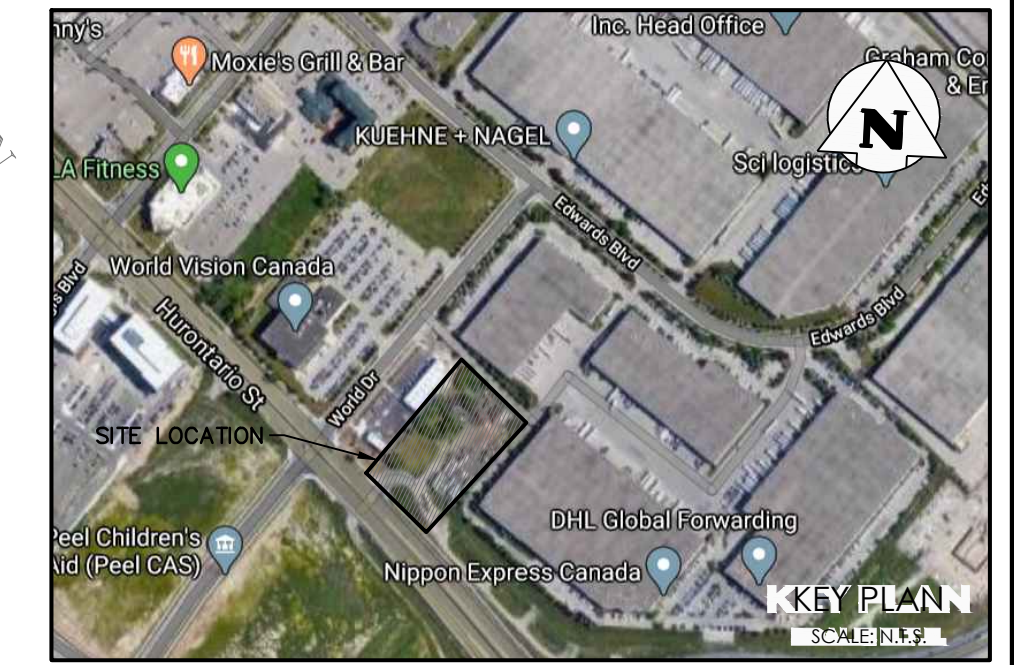
8. AT-SOURCE AND CONVEYANCE ESC MEASURES MUST BE USED IN ADDITION TO THE SEDIMENT TRAP

EROSION & SEDIMENT CONTROLS (ESC) MANAGEMENT STRATEGY

THE EROSION AND SEDIMENT CONTROLS SHALL BE A MULTI BARRIER APPROACH TO PREVENT EROSION DURING CONSTRUCTION TO DEAL WITH SEDIMENT TRANSPORT AT SOURCE AND TO MINIMIZE SEDIMENT TRANSPORT FROM LEAVING THE SITE. THE MITIGATION MEASURES OUTLINED BELOW SHALL BE MAINTAINED BY THE CONTRACTOR THROUGH REGULAR INSPECTIONS, MONITORING AND MAINTENANCE UNTIL THE SOIL HAS BEEN STABILIZED. THE CONTRACTOR SHALL KEEP A COPY OF THE ESC PLANS AND THE TORONTO AND REGION CONSERVATION AUTHORITY, EROSION AND SEDIMENT CONTROL GUIDELINE, DECEMBER 2006, ON SITE AT ALL TIMES

GENERAL NOTES

1. EROSION AND SEDIMENT CONTROL (ESC) MEASURES WILL BE IMPLEMENTED PRIOR TO, AND MAINTAINED DURING THE CONSTRUCTION PHASES TO PREVENT ENTRY OF SEDIMENT INTO THE WATER. ALL DAMAGED EROSION AND SEDIMENT CONTROL MEASURES SHOULD BE REPAIRED AND/OR REPLACED WITHIN 48 HOURS OF THE INSPECTION.
2. THE EROSION AND SEDIMENT CONTROL STRATEGIES OUTLINED ON THE PLANS ARE NOT STATIC AND MAY NEED TO BE UPGRADED / AMENDED AS SITE CONDITIONS CHANGE TO MINIMIZE SEDIMENT LADEN RUNOFF FROM LEAVING THE WORK AREAS. IF THE PRESCRIBED MEASURES ON THE PLANS ARE NOT EFFECTIVE IN PREVENTING THE RELEASE OF A DELETERIOUS SUBSTANCE, INCLUDING SEDIMENT, THEN ALTERNATIVE MEASURES MUST BE IMPLEMENTED IMMEDIATELY TO MINIMIZE POTENTIAL ECOLOGICAL IMPACTS. TRCA ENFORCEMENT OFFICER SHOULD BE IMMEDIATELY CONTACTED. ADDITIONAL ESC MEASURES ARE TO BE KEPT ON SITE AND USED AS NECESSARY.
3. AN ENVIRONMENTAL MONITOR WILL ATTEND THE SITE TO INSPECT ALL NEW CONTROLS, AS WELL AS ON A WEEKLY BASIS, OR FOLLOWING RAIN/SNOWMELT EVENT, TO MONITOR ALL WORKS, AND IN PARTICULAR WORKS RELATED TO EROSION AND SEDIMENT CONTROLS. SHOULD CONCERNS ARISE ON SITE THE ENVIRONMENTAL MONITOR WILL CONTACT THE TRCA ENFORCEMENT OFFICER AS WELL AS THE CONTRACTOR. WEEKLY INSPECTION REPORTS ARE TO BE PROVIDED TO THE TOWN AND TRCA.
4. ALL ACTIVITIES, INCLUDING MAINTENANCE PROCEDURES, WILL BE CONTROLLED TO PREVENT THE ENTRY OF PETROLEUM PRODUCTS, DEBRIS, RUBBLE, CONCRETE OR OTHER DELETERIOUS SUBSTANCES INTO THE WATER. VEHICULAR REFUELING AND MAINTENANCE WILL BE CONDUCTED A MINIMUM OF 30M FROM THE WATER.
5. AT THE TOWN'S DISCRETION, PRE-GRADE AREAS TO BE STABILIZED BY HYDRO SEEDING C/W APPLICATION OF STRAW MULCH PER OPSS 804 TO A DEPTH OF 25mm TO 50mm TO THE SATISFACTION OF TOWN STAFF.



EXISTING UTILITIES AND SERVICES
 CONTRACTOR SHALL NOTE THAT THE CONSTRUCTION ZONE HAS NUMEROUS EXISTING UNDERGROUND UTILITIES AND SERVICES, SOME OF WHICH ARE TO BE ABANDONED OR REMOVED, AND OTHERS WHICH ARE TO BE PROTECTED AND MAINTAINED IN SERVICE.
 PRIOR TO CONSTRUCTION, THE CONTRACTOR SHALL RETAIN THE SERVICES OF A COMPANY, WHICH SPECIALIZES IN SUBSURFACE UTILITY ENGINEERING FOR THE PURPOSES OF LOCATING, MARKING AND SURVEYING ALL UNDERGROUND UTILITIES AND SERVICES. ALL CURRENT METHODS SHALL BE USED FOR THESE LOCATIONS INCLUDING ELECTRONIC METHODS, VACUUM EXCAVATIONS, SURVEYING MANHOLES AND CHAMBERS ETC.
 THE UTILITIES AND SERVICES SHALL BE SURVEYED AND TIED INTO THE PROJECT COORDINATE SYSTEM. A COPY OF THE SURVEY SHALL BE PROVIDED TO THE ENGINEER FOR RECORD PURPOSES.
 ANY CONFLICT WITH THE PROPOSED WORKS SHALL BE BROUGHT TO THE ATTENTION OF THE ENGINEER.
 THE CONTRACTOR SHALL BE RESPONSIBLE FOR ALL LOCATIONS FOR PROTECTION AND TEMPORARY RELOCATION OF UNDERGROUND UTILITIES AND SERVICES AS REQUIRED FOR THE COMPLETE INSTALLATION OF THE PROPOSED WORKS.

EROSION & SEDIMENT CONTROL NOTES:

1. EROSION & SEDIMENT CONTROL MEASURES MUST BE INSTALLED PRIOR TO THE COMMENCEMENT OF SITE WORKS.
2. EROSION & SEDIMENT CONTROLS MUST BE INSPECTED ON A REGULAR BASIS AND AFTER EVERY RAIN FALL EVENT, AND MUST BE MAINTAINED AND REPAIRED IN A TIMELY MANNER TO PREVENT SEDIMENT FROM LEAVING THE SITE.
3. EXISTING AND PROPOSED CATCHBASINS ARE TO BE PROTECTED WITH FILTER CLOTH AND 150mm OF 50mm STONE COVER DURING CONSTRUCTION.
4. IT IS REQUIRED TO STABILIZE ALL AREAS THAT WILL REMAIN DISTURBED FOR MORE THAN 30 DAYS.
5. MUD MAT, SILT FENCE, AND CATCHBASIN PROTECTION ARE NOT TO BE REMOVED UNTIL COMPLETION OF CONSTRUCTION.

ALL DISTURBED AREAS TO BE RESTORED TO THE SATISFACTION OF THE CITY OF MISSISSAUGA AND REGION OF PEEL.
 ALL REMOVED MATERIALS TO BE DISPOSED OF OFF-SITE.
 THE REMOVAL/RELOCATION OF ELECTRICAL AND COMMUNICATION DUCTS, CABLES, ELECTRICAL POLES, LIGHT STANDARDS, GAS PIPES AND OTHER EX. UTILITIES TO BE COMPLETED PER ELECTRICAL DESIGN AND UTILITIES COMPANIES DESIGN.
NOTES:
 ALL DISTURBED AREAS WITHIN MUNICIPAL RIGHT-OF-WAYS ARE TO BE REINSTATED TO EXISTING CONDITIONS OR BETTER

NOT FOR CONSTRUCTION

Stamp: A. D. FARINA, 100523860, NOV/09/2022, PROVINCE OF ONTARIO

1	ISSUED FOR SECOND SUBMISSION (ZBA & SPA)	2022/NOV/09
0	ISSUED FOR FIRST SUBMISSION	2020/OCT/30

ELEVATION NOTE:
 ELEVATIONS ARE GEODETIC AND ARE DERIVED FROM THE CITY OF MISSISSAUGA BENCHMARK NO. 1015. TABLE SET HORIZONTALLY AT BASE OF A 0.75m DIAMETER CONCRETE TRAFFIC POLE AT THE NORTHEAST CORNER OF CORNIEPARK DRIVE EAST AND HURONTARIO STREET.
 PUBLISHED ELEVATION = 200.113 METERS

BEARING NOTE:
 BEARINGS SHOWN HEREON ARE ASTRONOMIC AND ARE REFERRED TO THE EASTERLY LIMIT OF HURONTARIO STREET AS SHOWN ON PLAN 43R-38391, HAVING A BEARING OF N43°44'10"W.

SURVEY NOTES:
 SURVEY COMPLETED BY COMPANY SPEIGHT, VAN NOSTRAND AND GIBSON LIMITED (2020/JUL/13).
 DISTANCES SHOWN ON THIS PLAN ARE IN METRES AND CAN BE CONVERTED TO FEET BY DIVIDING BY 0.3048.

SITE PLAN NOTES:
 DESIGN ELEMENTS ARE BASED ON SITE PLAN BY GLOBAL ARCHITECT INC. DRAWING No.: A-101, REV.3 (2022/NOV/03)
 PROJECT No.: 22-08

DRAWING NOTES:
 THIS DRAWING IS THE EXCLUSIVE PROPERTY OF C.F. CROZIER & ASSOCIATES INC. AND THE REPRODUCTION OF ANY PART OF IT WITHOUT PRIOR WRITTEN CONSENT OF THIS OFFICE IS STRICTLY PROHIBITED.
 THE CONTRACTOR SHALL VERIFY ALL DIMENSIONS, LEVELS, AND DATUMS ON SITE AND REPORT ANY DISCREPANCIES OR OMISSIONS TO THIS OFFICE PRIOR TO CONSTRUCTION. THIS DRAWING IS TO BE READ AND UNDERSTOOD IN CONJUNCTION WITH ALL OTHER PLANS AND DOCUMENTS APPLICABLE TO THIS PROJECT. DO NOT SCALE THIS DRAWING.
 ALL EXISTING UNDERGROUND UTILITIES TO BE VERIFIED IN THE FIELD BY THE CONTRACTOR PRIOR TO CONSTRUCTION.

Project: **DYMON GROUP OF COMPANIES**
6333 HURONTARIO STREET
CITY OF MISSISSAUGA

Drawing: **REMOVALS PLAN**
EROSION & SEDIMENT CONTROL PLAN

CROZIER CONSULTING ENGINEERS
 2800 HIGH POINT DRIVE SUITE 100 MILTON, ON L9T 6P4 905-875-0026 T 905-875-4915 F WWW.CFCROZIER.CA

Drawn: D.B.	Design: D.B.	Project No: 1644-5564
Check: A.D.F.	Check: A.D.F.	Scale: 1:400
		Dwg: C 101