



VIEW FROM BRITANNIA ROAD WEST 1
A405



VIEW INTO RESIDENTIAL COURTYARD 2
A405



VIEW LOOKING OUT FROM COURTYARD ENTRANCE 3
A405



VIEW OF QUEEN STREET RESIDENTIAL ENTRY 4
A405

THIS DRAWING, AS AN INSTRUMENT OF SERVICE, IS PROVIDED BY AND IS THE PROPERTY OF GRAZIANI-CORAZZA ARCHITECTS INC. THE CONTRACTOR MUST VERIFY AND ACCEPT RESPONSIBILITY FOR ALL DIMENSIONS AND CONDITIONS ON SITE AND MUST NOTIFY GRAZIANI-CORAZZA ARCHITECTS INC. OF ANY VARIATIONS FROM THE SUPPLIED INFORMATION. GRAZIANI-CORAZZA ARCHITECTS INC. IS NOT RESPONSIBLE FOR THE ACCURACY OF SURVEY, STRUCTURAL, MECHANICAL, ELECTRICAL, AND OTHER ENGINEERING INFORMATION SHOWN ON THIS DRAWING. REFER TO THE APPROPRIATE ENGINEERING DRAWINGS BEFORE PROCEEDING WITH THE WORK. CONSTRUCTION MUST CONFORM TO ALL APPLICABLE CODES AND REQUIREMENTS OF THE AUTHORITIES HAVING JURISDICTION, UNLESS OTHERWISE NOTED. NO INVESTIGATION HAS BEEN UNDERTAKEN OR REPORTED ON BY THIS OFFICE IN REGARDS TO THE ENVIRONMENTAL CONDITION OF THIS SITE.

THIS DRAWING IS NOT TO BE SCALED. ALL ARCHITECTURAL SYMBOLS INDICATED ON THIS DRAWING ARE GRAPHIC REPRESENTATIONS ONLY.

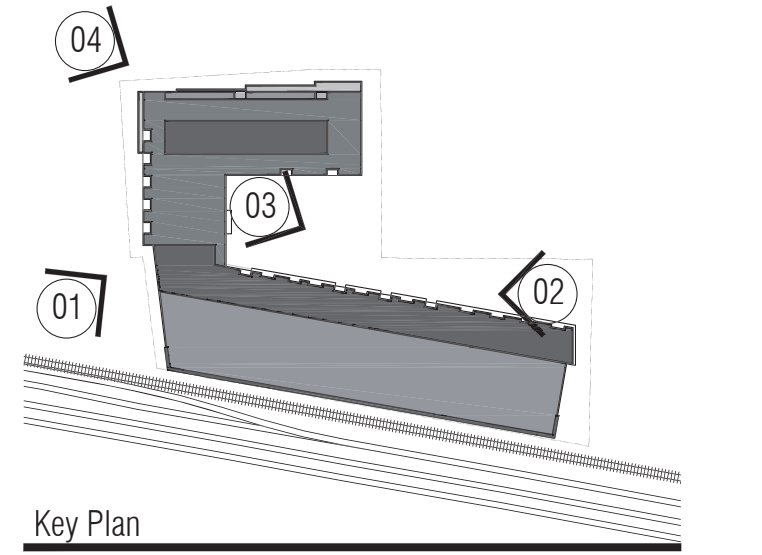
CONDITIONS FOR ELECTRONIC INFORMATION TRANSFER:

ELECTRONIC INFORMATION IS SUPPLIED TO THE OTHER ASSOCIATED FIRMS TO ASSIST THEM IN THE EXECUTION OF THEIR WORK/REVIEW. THE RECIPIENT FIRMS MUST DETERMINE THE COMPLETENESS/APPROPRIATENESS/RELEVANCE OF THE INFORMATION IN RESPECT TO THEIR PARTICULAR RESPONSIBILITY.

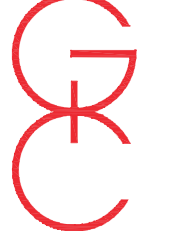
GRAZIANI-CORAZZA ARCHITECTS INC. SHALL NOT BE RESPONSIBLE FOR:

1. ERRORS, OMISSIONS, INCOMPLETENESS DUE TO LOSS OF INFORMATION IN WHOLE OR PART WHEN INFORMATION IS TRANSFERRED.
2. TRANSMISSION OF ANY VIRUS OR DAMAGE TO THE RECEIVING ELECTRONIC SYSTEM WHEN INFORMATION IS TRANSFERRED.

01. FEB.03.2023 issued for ZBA + OPA B6




issued for revisions



**GRAZIANI
CORAZZA
ARCHITECTS**

8400 JANE STREET, BUILDING G, SUITE 300 CONCORD, ONTARIO L4K 4L8
T.905.725.2901 F.905.725.2844 WWW.GC-ARCHITECTS.COM



ONTARIO ASSOCIATION
OF
ARCHITECTS

BERNARDO E. GRAZIANI
LICENCE
4684

Mixed-Use

Queen+Britannia

6,10,12 Queen Street South, 16 James Street & 2 William Street
Mississauga Ontario

PROJECT ARCHITECT:	B.Graziani
ASSISTANT DESIGNER:	C.Kotva
DRAWN BY:	S.P
CHECKED BY:	G.COLANGELO / D.BIASE
PLOT DATE:	FEB.03.2023
JOB #	2045.22

CONCEPT RENDERINGS

NTS **A405**

TITLEBLOCK SIZE: 610 x 900