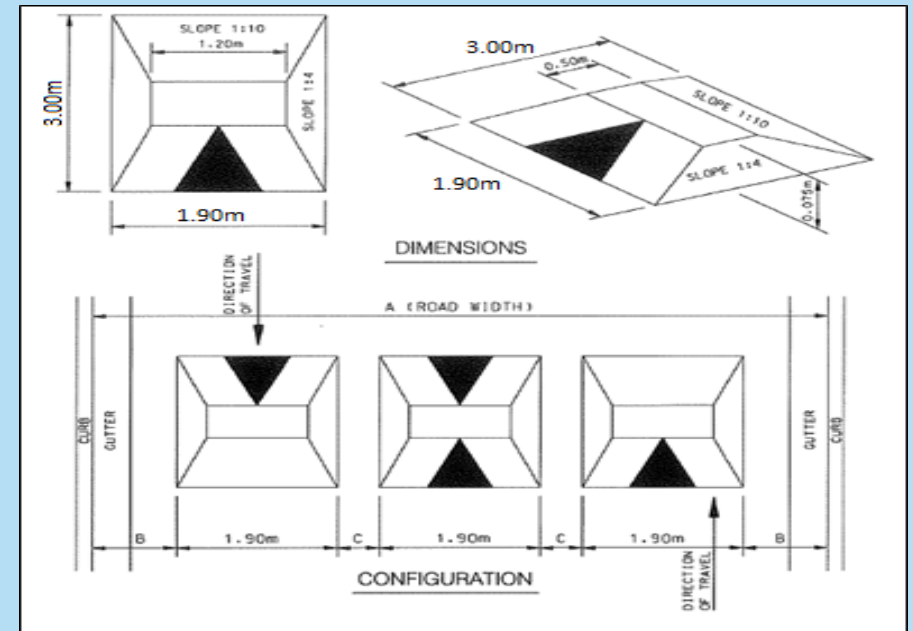
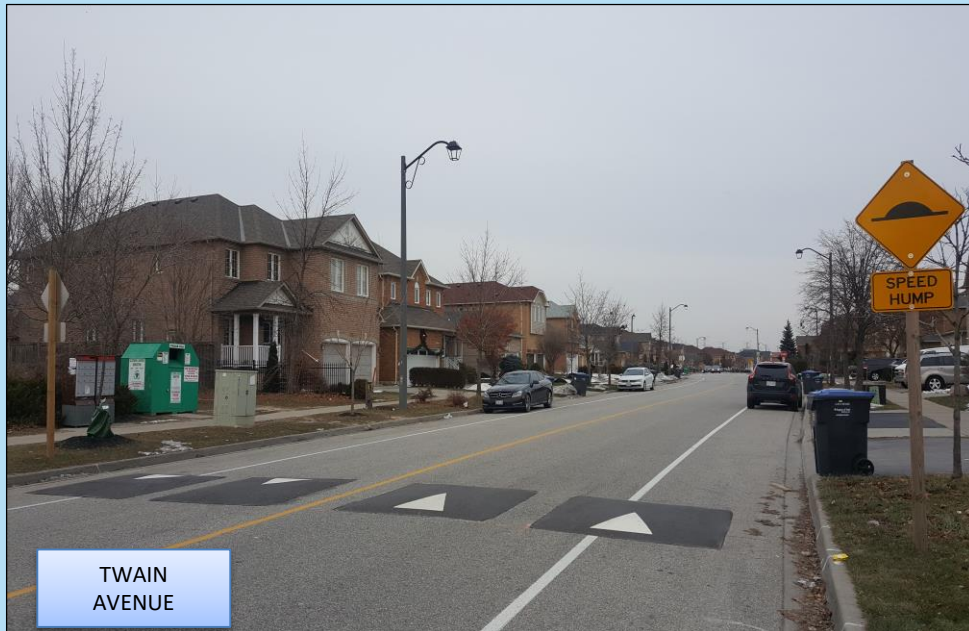


WARD 6 – TRAFFIC CALMING

Heatherleigh Avenue

SPEED CUSHIONS AND SPEED CUSHION DESIGN



FLEXIBLE BOLLARDS

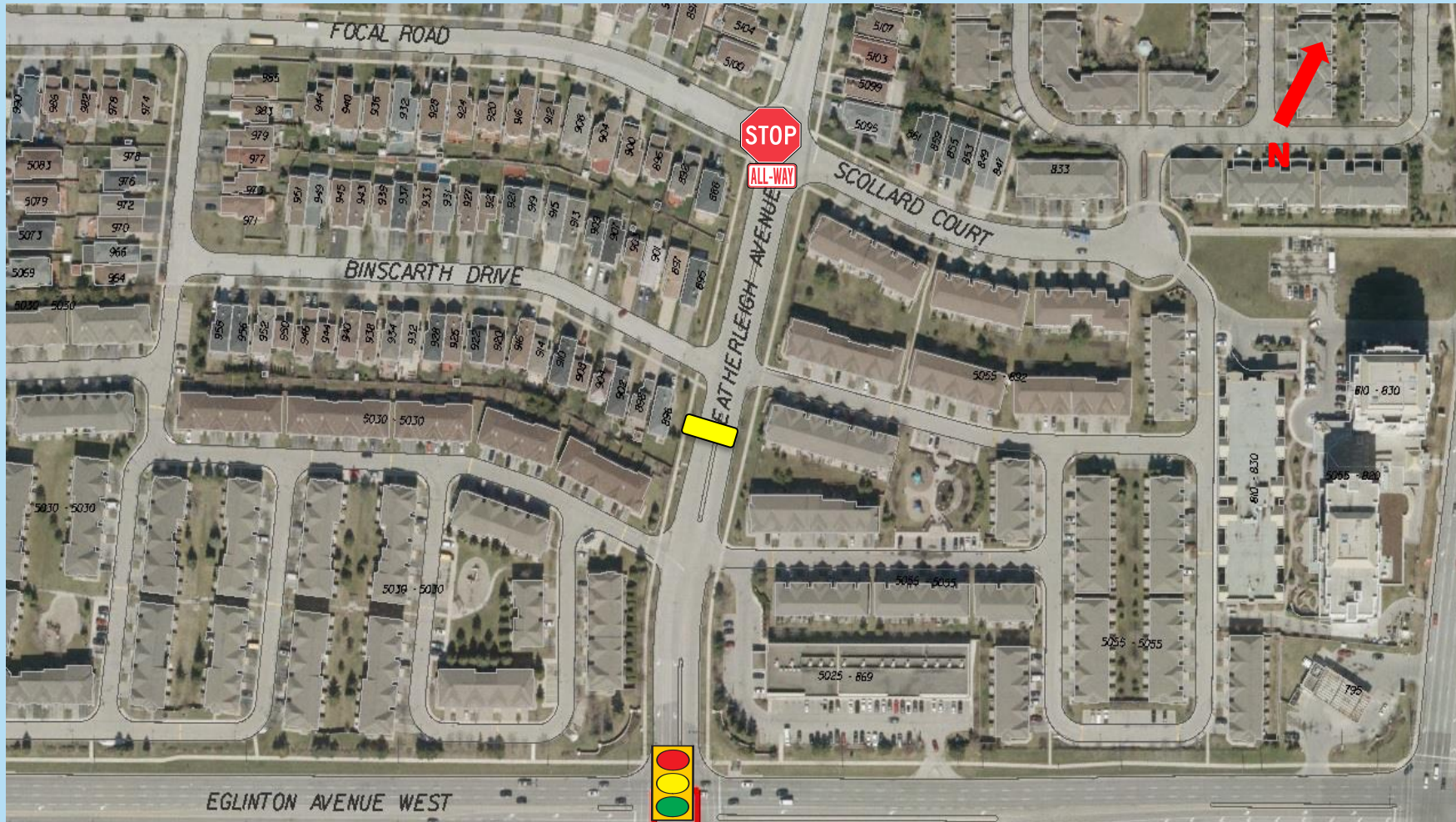




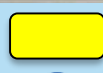

STAVEBANK ROAD



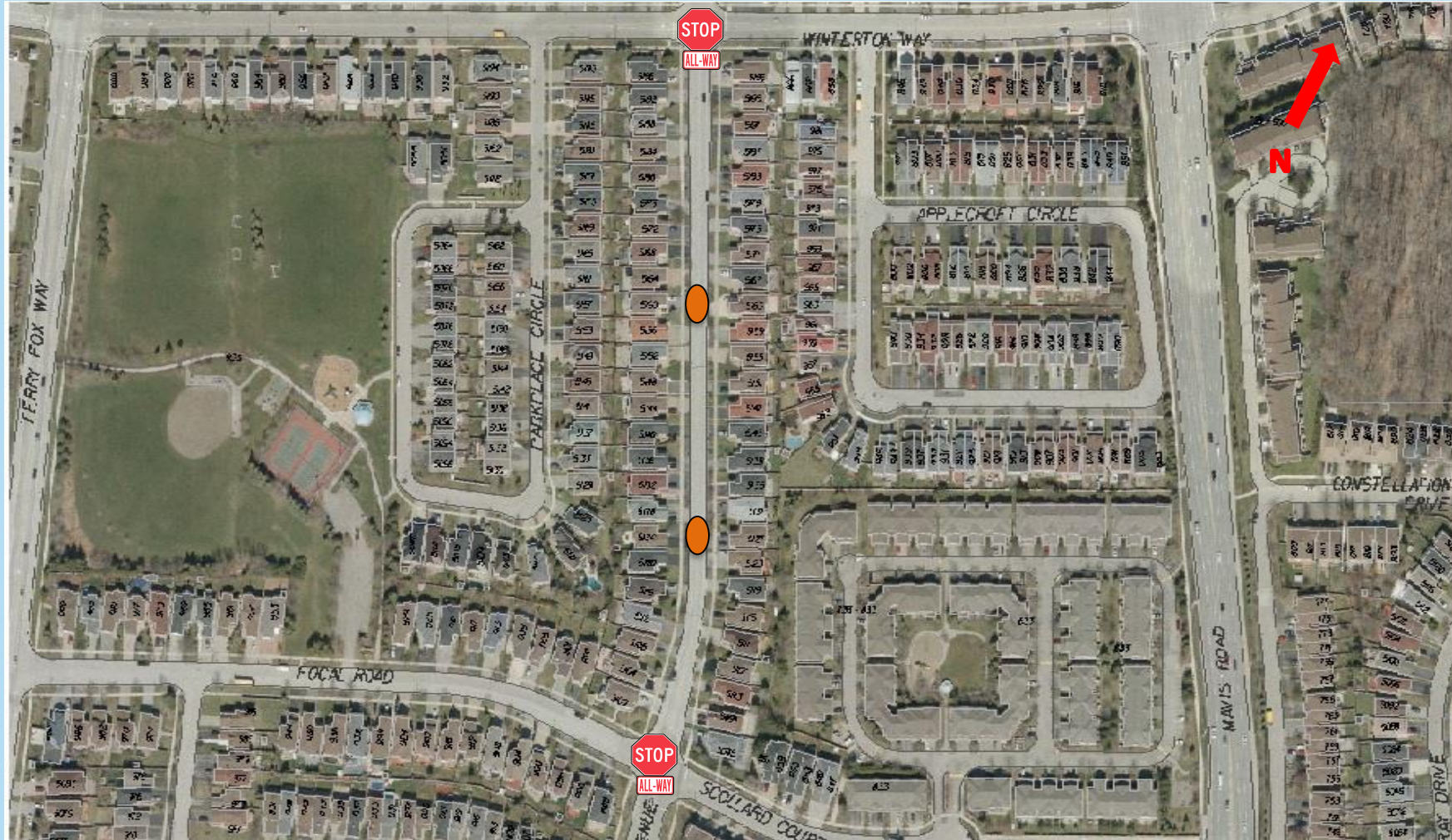
BALSAM AVENUE

HEATHERLEIGH AVENUE



-  - Existing Signalized Intersection
-  - Existing location of an All-Way Stop
-  - Traffic Calming Device
-  - Flexible Bollard

HEATHERLEIGH AVENUE



- Signalized Intersection



- Existing Location of an All-Way Stop

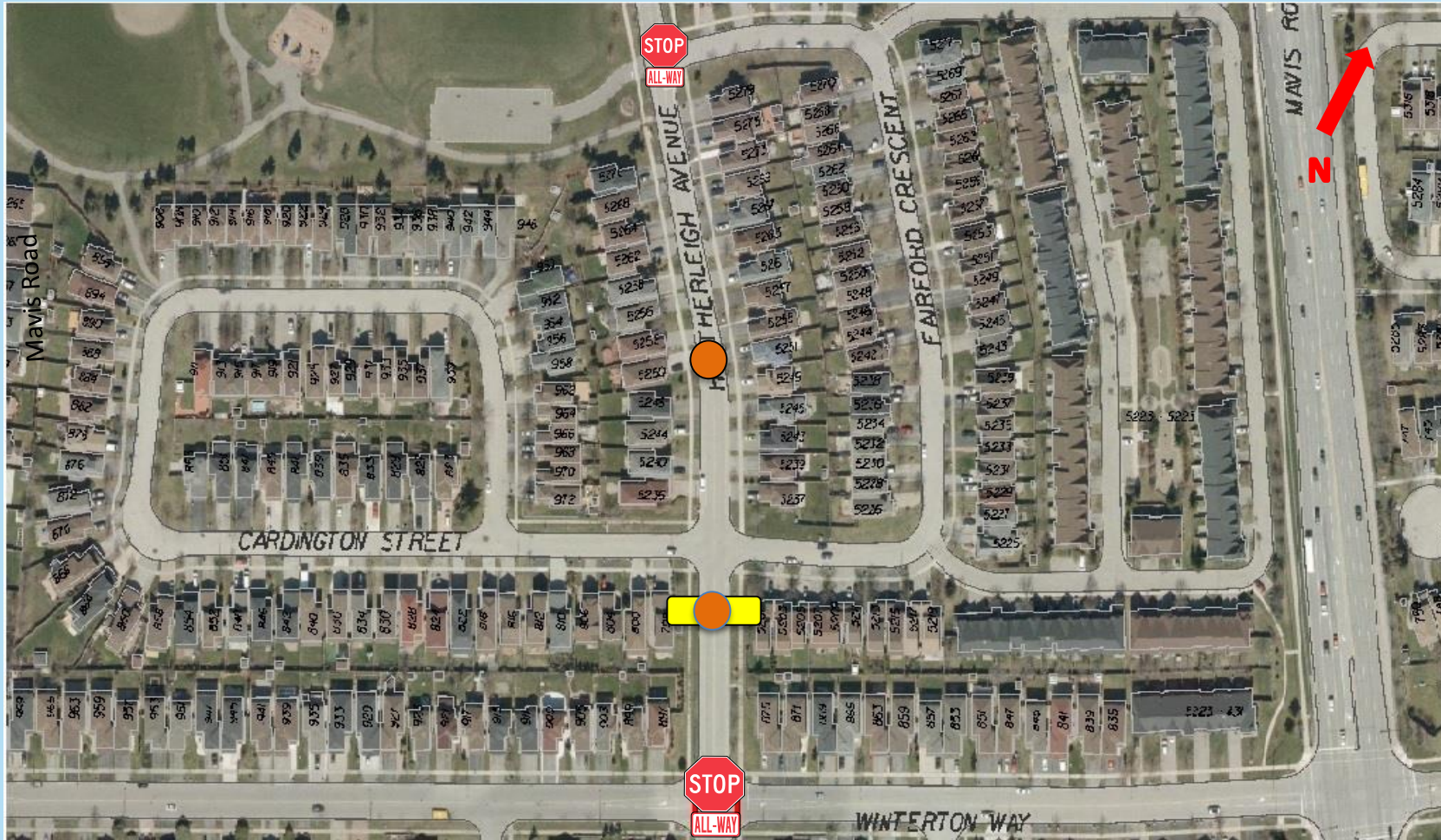


- Traffic Calming Device



- Flexible Bollard

HEATHERLEIGH AVENUE



- Signalized Intersection



- Existing Location of an All-Way Stop



- Traffic Calming Device

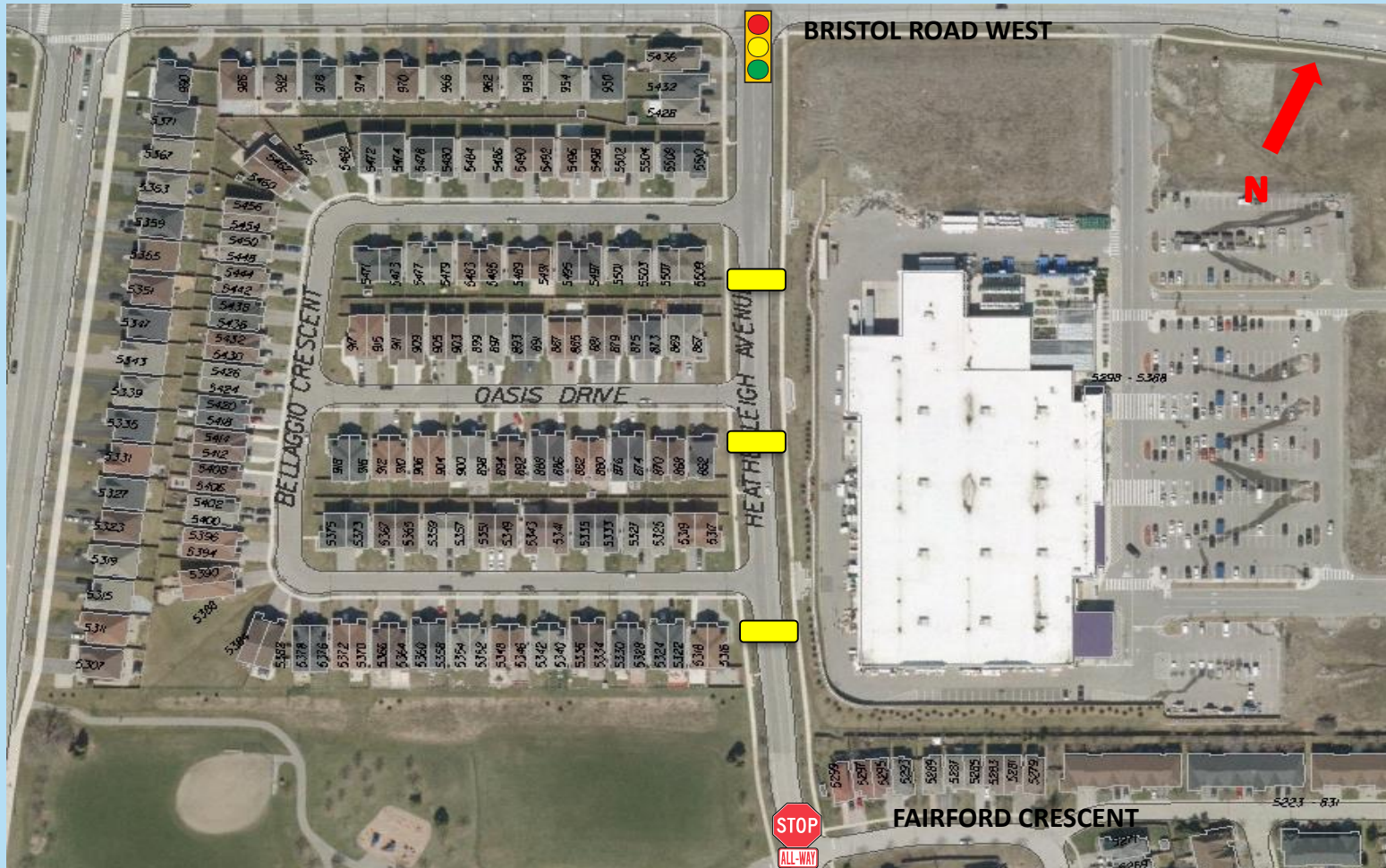


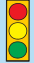



- Flexible Bollard



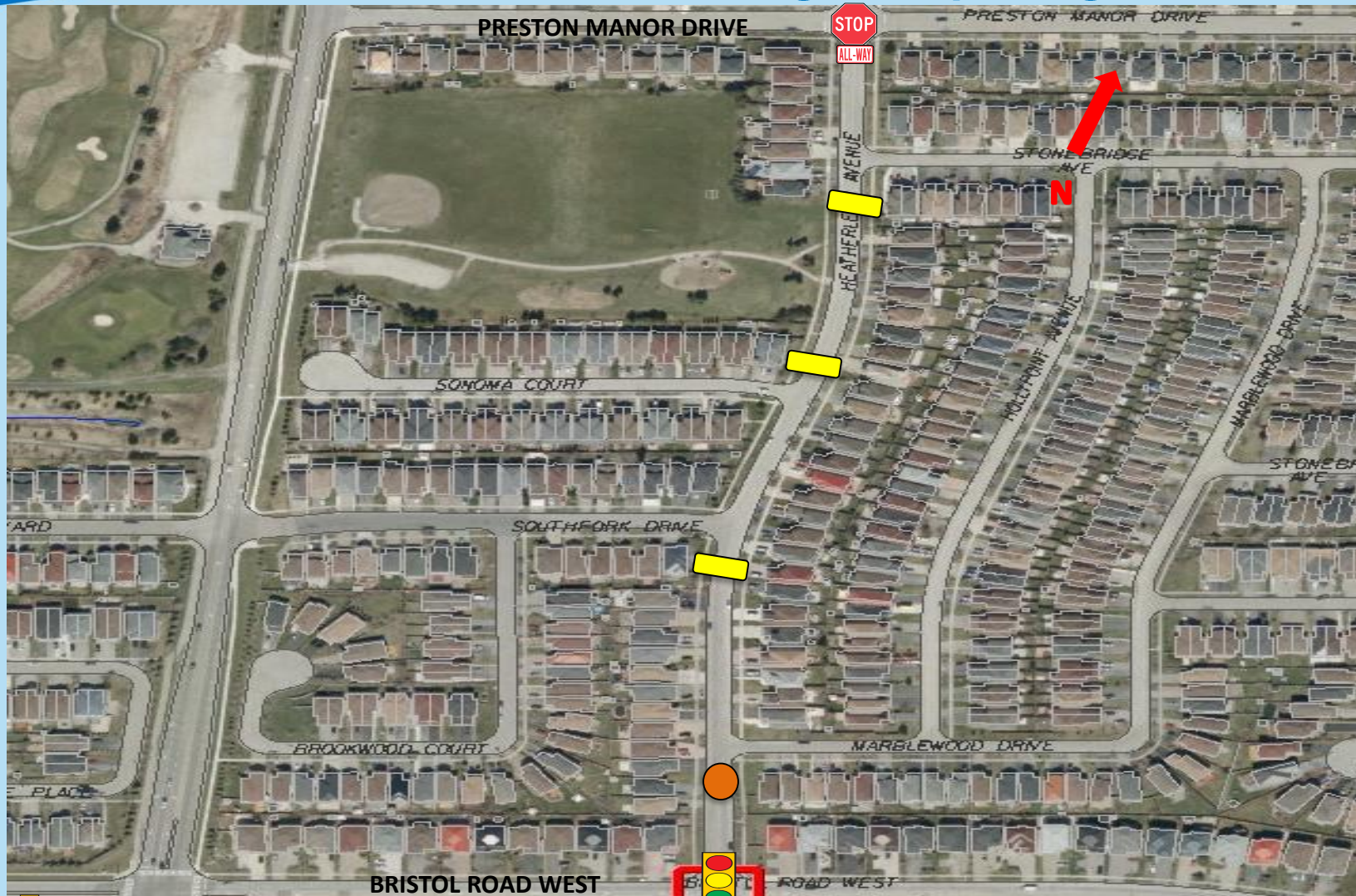
- Traffic Calming Device and Flexible Bollard





HEATHERLEIGH AVENUE



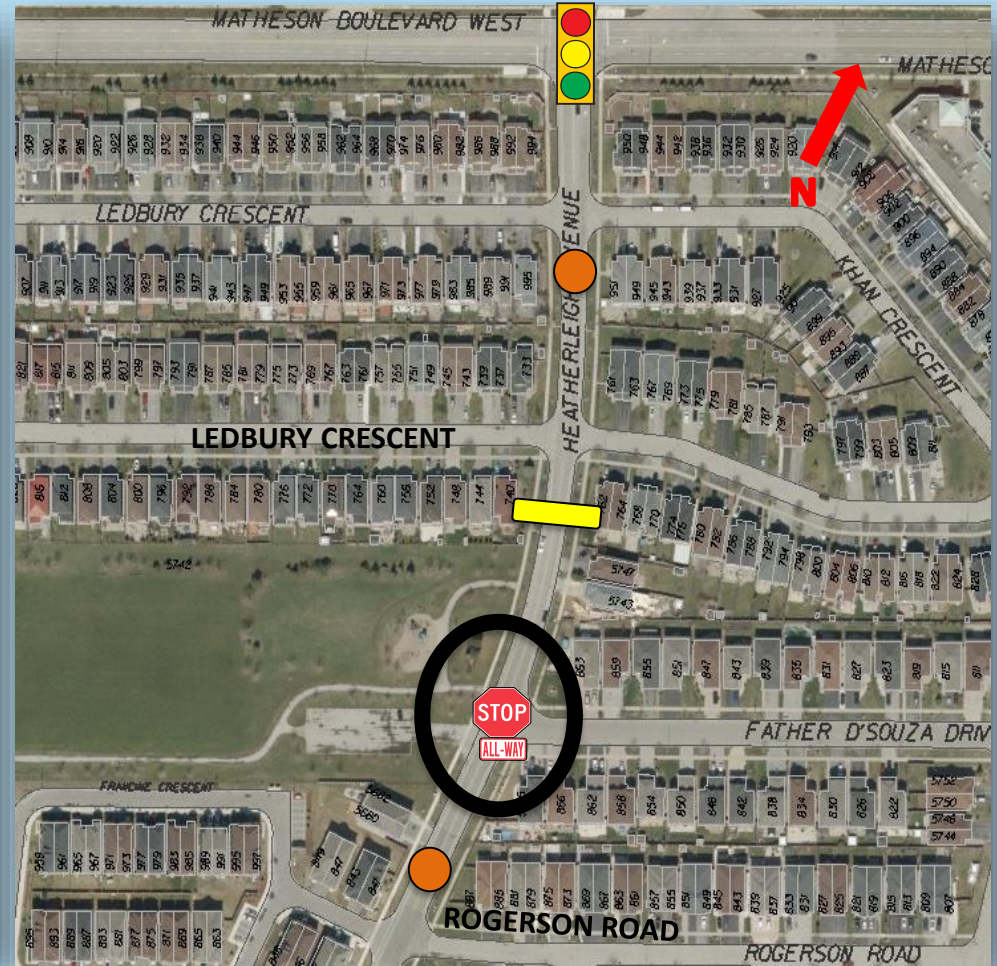
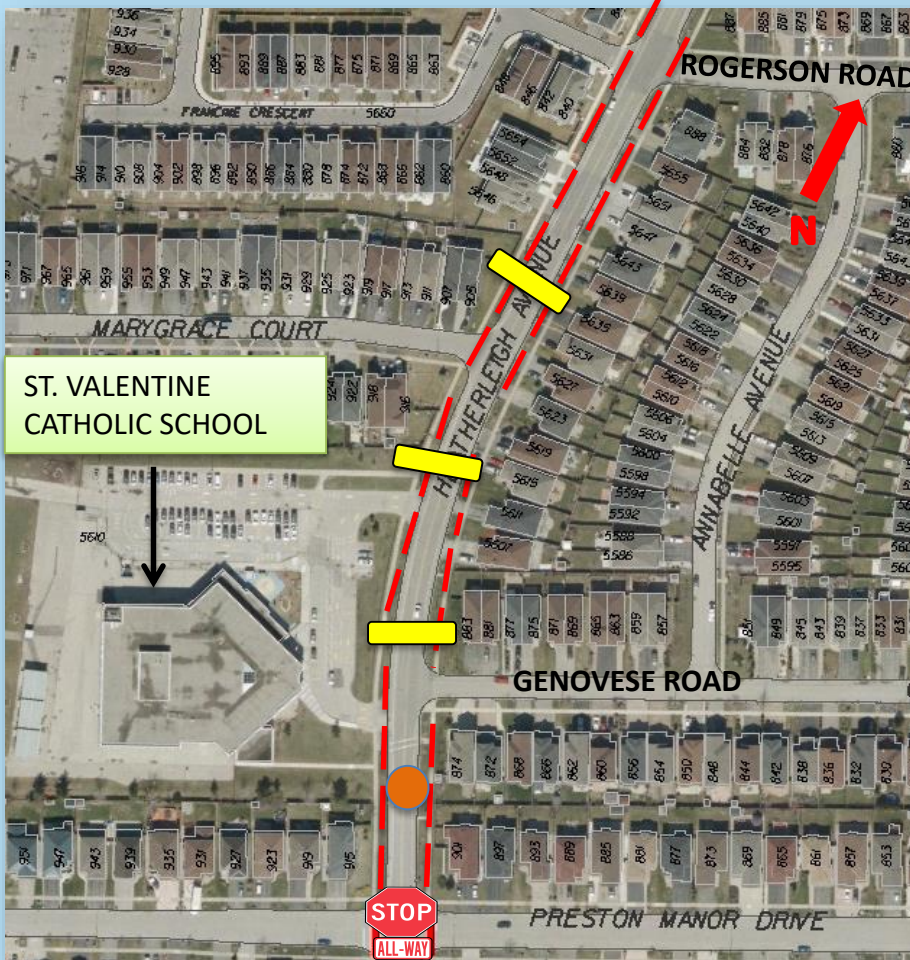
-  - Existing Signalized Intersection
-  - Traffic Calming Device
-  - Existing Location of an All-Way Stop
-  - Flexible Bollard

HEATHERLEIGH AVENUE



-  - Existing Signalized Intersection
-  - Existing Location of an All-Way Stop
-  - Traffic Calming Device
-  - Flexible Bollard

HEATHERLEIGH AVENUE



- Existing Signalized Intersection



- Existing All-Way Stop



- Traffic Calming Device



- 30km/h speed limit zone



- Flexible Bollard



- Proposed NEW All-Way Stop