

CITY OF MISSISSAUGA – NOTICE OF STUDY COMMENCEMENT

Municipal Class Environmental Assessment Study: Credit River Erosion Control Project Behind Kenninghall Blvd and Plainsman Rd

WHAT?

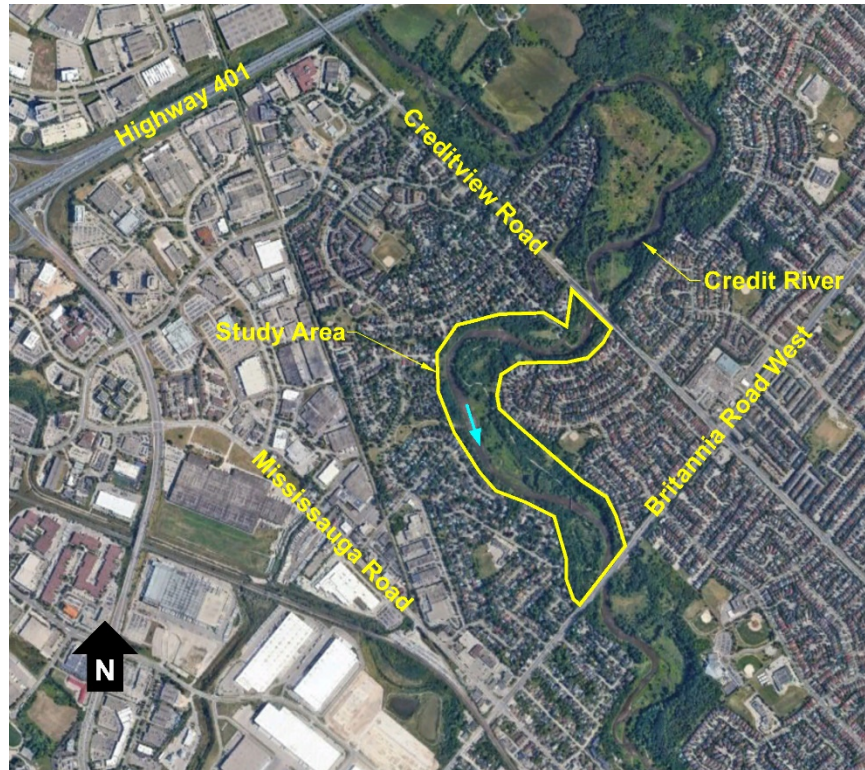
- The City of Mississauga is undertaking a Municipal Class Environmental Assessment (Class EA) Study to identify erosion sites along the Credit River, assess associated risks to infrastructure and properties, and develop remedial options to address any concerns.

WHY?

- The City of Mississauga recognizes that erosion along this section of the Credit River may pose a risk to infrastructure and properties.

HOW?

- The study will examine this section of the river and associated natural resources to identify existing erosion issues, potential risks, and opportunities for restoration and improvements.
- Multiple alternative solutions will be developed and evaluated by the Study Team and refined through public and agency consultation (see below). The Study Team will then select a Preferred Alternative.
- At the end of the study, a Project File report documenting the study process will be available for public review.
- Following completion of the Class EA Study, designs will be developed and implemented in accordance with Study recommendations.



GET INVOLVED!

- Consultation is an important part of the Class EA process. Public input and comment are invited for incorporation into the planning and design of this project.
- A Public Information Centre (PIC) will be held to present the study findings, to consider alternative solutions, and to answer any questions you may have. Details regarding the PIC will be advertised publicly as the study progresses.
- Project information will be made available on the City's project website:

www.mississauga.ca/projects-and-strategies/environmental-assessments/credit-river-erosion-control-behind-Kenninghall-Boulevard-and-Plainsman-Road

- If you have any questions or comments regarding the study, wish to provide input, or want to be added or removed from the study mailing list, please contact:

Greg Frew, P.Eng.
Project Manager
City of Mississauga
300 City Centre Dr
Mississauga, ON L5B 3C1
(905) 615-3200, ext. 3362
greg.frew@mississauga.ca

Kevin Tabata
Consultant Project Manager
GEO Morphix Ltd.
36 Main St N
Campbellville, ON L0P 1B0
(416) 920-0926
kevint@geomorphix.com

This notice signals the commencement of the Class EA, a study which will define the problem, identify/evaluate alternative solutions, and determine a preferred design in consultation with regulatory agencies and the public. The study is being undertaken in accordance with the planning and design process for Schedule 'B' projects, as outlined in the "Municipal Class Environmental Assessment" document (October 2000, amended in 2015), which is approved under the Ontario *Environmental Assessment Act*.

Personal information is collected under the authority of the Environmental Assessment Act and will be used in the assessment process. With exception of personal information, all comments shall become part of the public records. Questions about this collection should be directed to the Project Manager listed above.