



EXISTING
RESIDENTIAL

90

SUNNINGDALE BEND

SUNNINGDALE BEND

EXISTING
RESIDENTIAL

Condo Road

Lot 1
559m²
B.E. = 226m²
(40%)

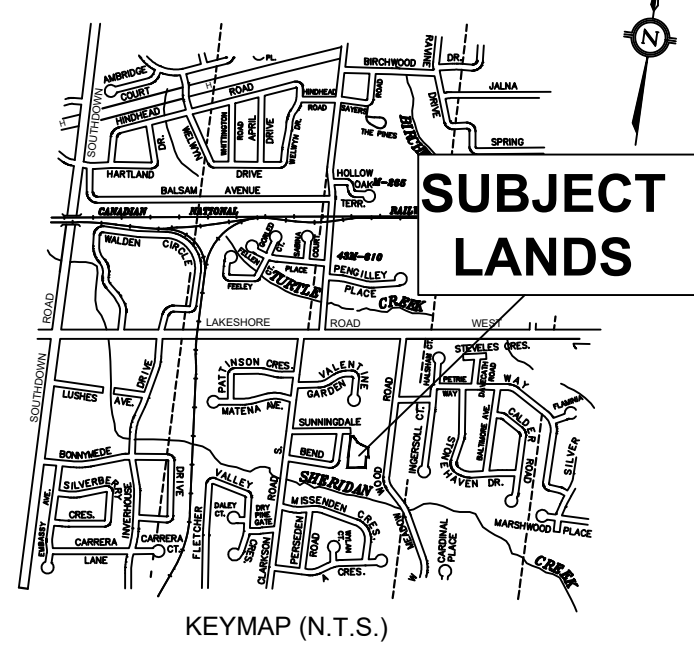
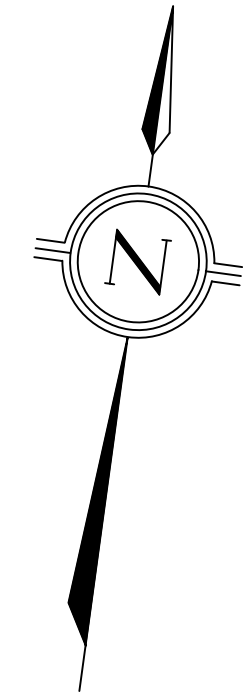
Lot 2
565m²
B.E. = 243m²
(43%)

Lot 3
693m²
B.E. = 231m²
(33%)

Lot 4
773m²
B.E. = 255m²
(33%)

Lot 5
1,250m²
B.E. = 198m²
(16%)

Only shielded exterior lighting fixtures will be used except as required for compliance with the Ontario Building Code and/or the recommendations of the Illuminating Engineering Society of North America (IESNA) lighting handbook for uses and/or activities.



- LEGEND**
- METERED CONDO STREETLIGHT SUPPLY PEDESTAL (SMALL SQUARE IS ACTUAL SIZE)
 - ▣ HYDRO TRANSFORMER BY ALECTRA WITH GROUND GRID SHOWN FINAL LOCATION TO BE APPROVED BY ALECTRA AS PART OF HYDRO APPLICATION.
 - SITE LIGHTING 50W EALS LED LUMINAIRE BY G.E. TO BE INSTALLED ON 30' OVERALL HEIGHT (25' ABOVE GRADE) POLE (SPECIFICATION TO BE CONFIRMED BY CLIENT). LUMINAIRE TO MATCH EAL5009_C2ANT30_IES
 - CITY STANDARD STREETLIGHT: CON-X-CORP COBRA STYLE LUMINAIRE INSTALLED WITH 8' T.E. ARM ON 32.5' CONCRETE POLE. ROADWAY LUMINAIRE TO BE CNX-LRL4-P1-2M-42-32-M-XX7-GRY-700. LUMINAIRE AND ARM TO BE GREY TO MATCH POLE. ALL LUMINAIRE VOLTAGES SHALL BE 120/240V WIRED TO 240V COMPLETE WITH RME-XBP CONTROLS BY DIMONOFF INC. LUMINAIRE TO MATCH IES FILE: CNX-LRL4-2M-42-032-M-XXX-700.IES
 - EXISTING STREETLIGHT

ALL SITE LIGHTING IS TO BE SHIELDED IN CONFORMITY WITH THE SITE PLAN AND TO THE SATISFACTION OF THE CITY OF MISSISSAUGA.

REV. NO.	REVISION	REV. BY	DATE

RTG SYSTEMS INC.
ELECTRICAL CONSULTING ENGINEERS
3518 Mainway Dr., Suite 201 Office: (905) 335-4470
BURLINGTON ON L7M 1A8 Toronto: (905) 927-7987
E-MAIL: general@rtgsystems.com 05995-00

70 MISSISSAUGA ROAD S. AND
181 LAKESHORE ROAD E.
TOWNHOUSE BLOCK
ELECTRICAL LAYOUT

SCALE	1:250			0 10 20 30 40 50 METRES		
DES. TECH.	DRAWN	WORK ORDER	DATE			
	S.C.G.		JAN 31, 2023			
REVIEWED BY	AREA	SHEET				
S.C.G.	MISS.	1 of 1	E100			