

- LEGEND**
- PROPOSED CATCHBASIN
 - ▣ PROPOSED DOUBLE CATCHBASIN
 - PROPOSED CATCHBASIN MANHOLE
 - ⊙ PROPOSED STORM MANHOLE
 - ⊚ PROPOSED DOUBLE CATCHBASIN MANHOLE
 - PROPOSED SANITARY MANHOLE
 - ⊕ PROPOSED FIRE HYDRANT
 - ⊞ PROPOSED VALVE & BOX
 - ⊟ PROPOSED PLUG
 - EXISTING ELEVATION
 - 000.00 PROPOSED FINISHED ELEVATION
 - PROPOSED DRAINAGE DIRECTION
 - PROPOSED SWALE DRAINAGE DIRECTION
 - PROPOSED OVERLAND FLOW DIRECTION
 - CB* CATCH BASIN WITH CB SHIELD
 - ▨ PROPOSED SLOPE
 - 104 TREE NUMBER
 - ⊕ TREE TO BE REMOVED
 - TREE TO REMAIN
 - - - TREE HOARDING
 - - - 100-YEAR FLOODLINE (96.05 m)
 - STREET LIGHT POST
 - ◻ TRANSFORMER

NO.	DATE	BY/DRAWN	REVISIONS
2	23/02/07	AJP/JN	RE-ISSUED FOR RE-ZONING
1	21/06/09	SF/ZG	ISSUED

CAD FILE: 1407GS.dwg PLOT SCALE: 1:1 PLOT DATE: Jun 15, 2023

BENCHMARK
 ELEVATIONS SHOWN HEREON ARE GEODETIC VERTICAL DATUM-1928, AND WERE DERIVED FROM CITY OF MISSISSAUGA BENCHMARK No. 713, HAVING ELEVATIONS OF 96.649m.

NOTE
 EXISTING TOPOGRAPHIC INFORMATION WAS COMPLETED ON THE 20TH DAY OF OCTOBER, 2020 AND PREPARED BY TARASIK McMILLAN LTD. ONTARIO LAND SURVEYORS. File No.4985-20-T

DESIGNED BY

APPROVED BY

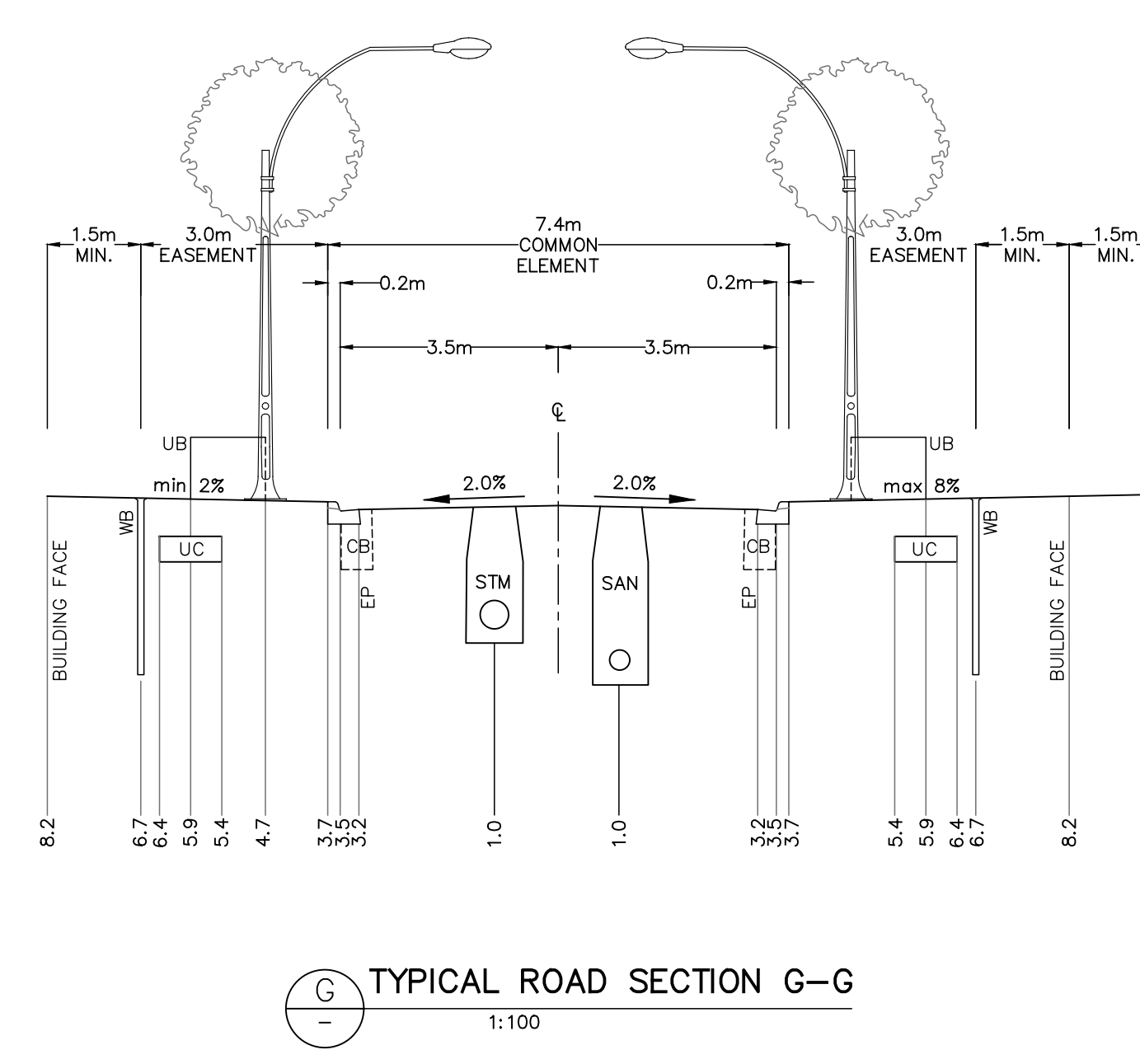
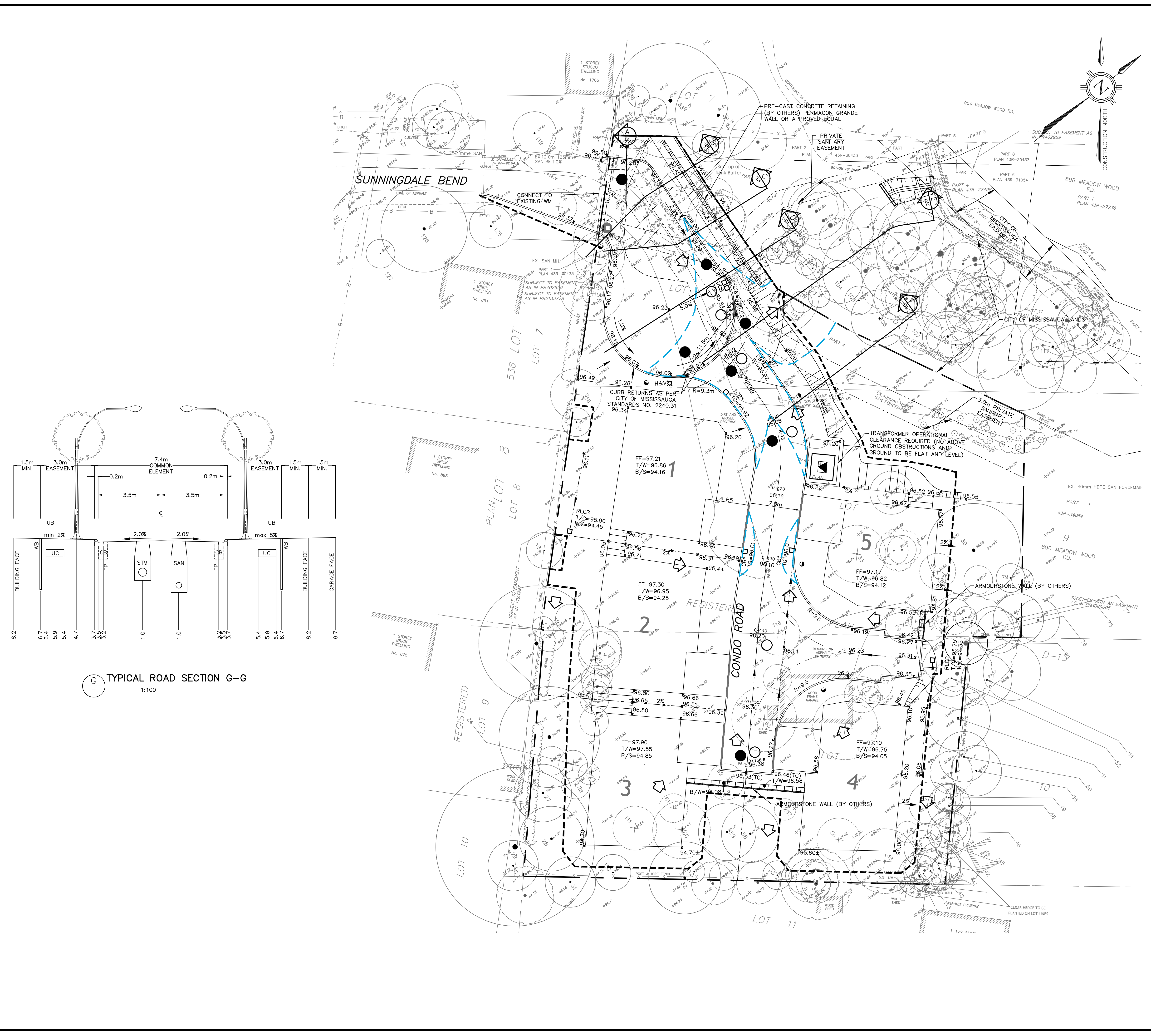
TRAFALGAR ENGINEERING
 #1-481 MORDEN ROAD, OAKVILLE, ON, L6K 3W6
 www.trafalgareng.com

PROJECT TITLE
RESIDENTIAL DEVELOPMENT

LOCATION
**1667 SUNNINGDALE BEND
 MISSISSAUGA ON**

DRAWING TITLE
GRADING PLAN

SCALE	1:250	DESIGN BY	AJP	PROJECT No.	1407
DRAWN BY	ZG	CHECKED BY	JN	PLAN No.	G1
DATE	2023/06/15	SHEET	1 OF 1		



FILENAME: P:\1407 Welton\Drawings\DWG\1407GS.dwg
 PLOT DATE: Jun 15, 2023 - 2:42pm