

- LEGEND**
- PROPOSED CATCHBASIN
 - ▣ PROPOSED DOUBLE CATCHBASIN
 - PROPOSED CATCHBASIN MANHOLE
 - ⊕ PROPOSED DOUBLE CATCHBASIN MANHOLE
 - PROPOSED STORM MANHOLE
 - PROPOSED SANITARY MANHOLE
 - ⊕ PROPOSED FIRE HYDRANT
 - ⊕ PROPOSED VALVE & BOX
 - ▴ PROPOSED 300mm x 100mm REDUCER
 - PROPOSED PLUG
 - PROPOSED STORM SEWER
 - PROPOSED SANITARY SEWER
 - PROPOSED WATERMAIN
 - PROPOSED PROPERTY BOUNDARY
 - - - PROPOSED STORM CONNECTION
 - - - PROPOSED SAN CONNECTION
 - - - PROPOSED WATERMAIN CONNECTION
 - ↗ OVERLAND FLOW
 - CB* CATCH BASIN WITH CB SHIELD
 - ⊕ SUMP PUMP REQUIRED
 - 104 TREE NUMBER
 - ⊕ TREE TO BE REMOVED
 - TREE TO REMAIN
 - - - TREE HOARDING
 - ⊕ STREET LIGHT POST
 - ⊕ TRANSFORMER

2	23/01/20	AJP/JN	RE-ISSUED FOR RE-ZONING
1	21/08/09	SP/ZG	ISSUED
NO.	DATE	BY/DRAWN	REVISIONS

CAD FILE: 1407GS.dwg PLOT SCALE: 1:1 PLOT DATE: Jun 15, 2023

BENCHMARK
ELEVATIONS SHOWN HEREON ARE GEODETIC VERTICAL DATUM-1928, AND WERE DERIVED FROM CITY OF MISSISSAUGA BENCHMARK No. 713, HAVING ELEVATIONS OF 96.649m.

NOTE
EXISTING TOPOGRAPHIC INFORMATION WAS COMPLETED ON THE 20TH DAY OF OCTOBER, 2020 AND PREPARED BY TARASIK McMILLAN LTD. ONTARIO LAND SURVEYORS. File No.4985-20-T

DESIGNED BY

APPROVED BY

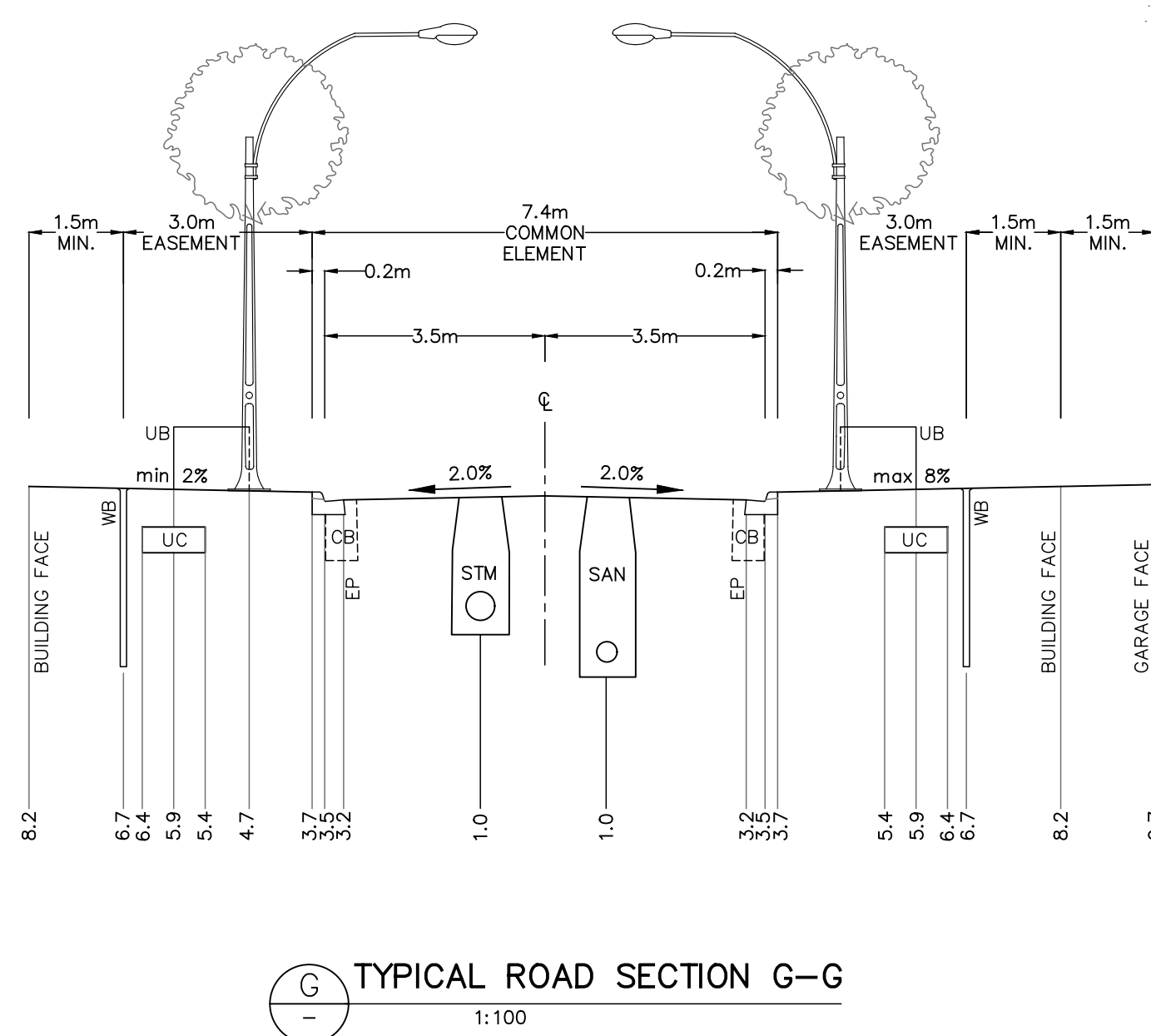
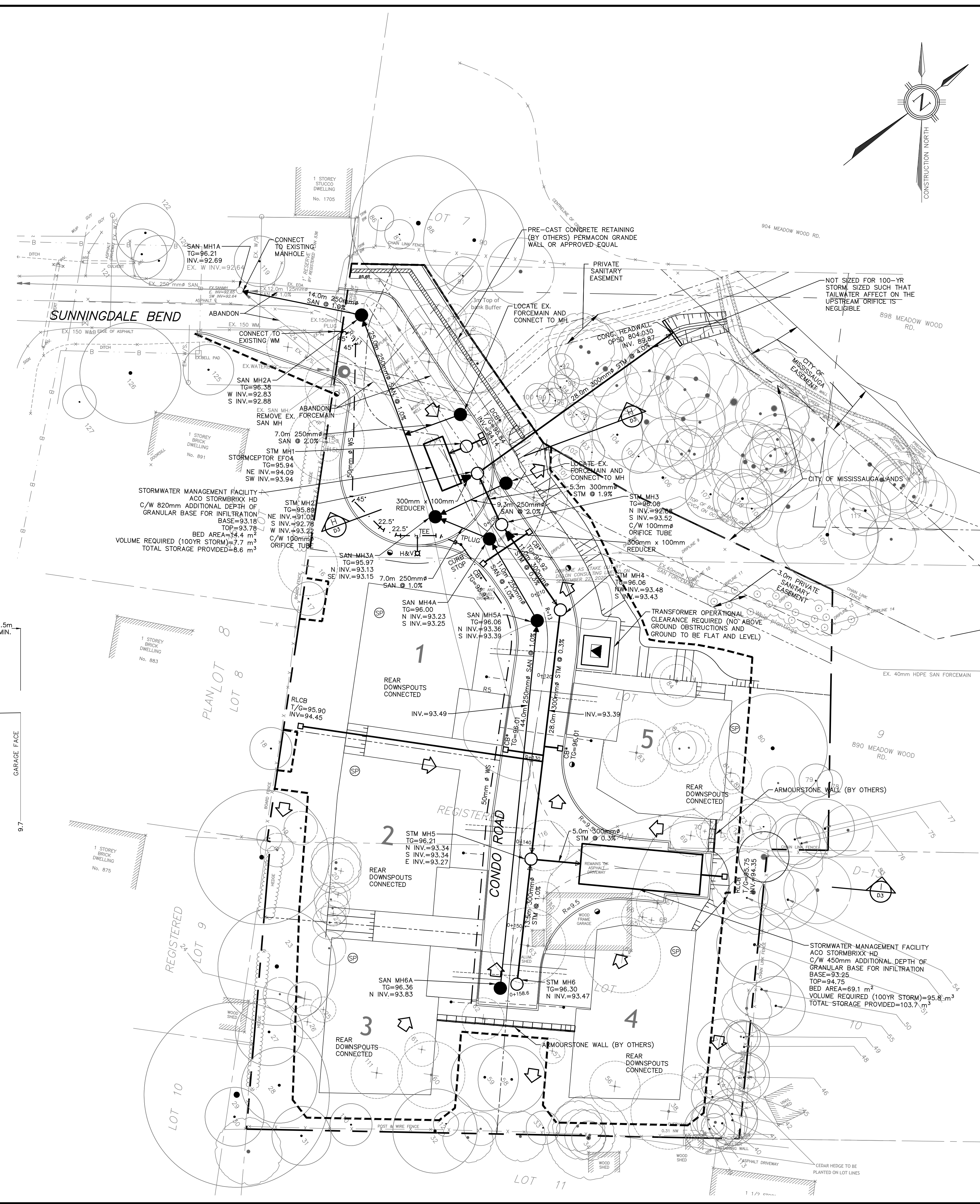
81-481 MORDEN ROAD, OAKVILLE, ON, L6K 3W6
www.trafalgar-eng.com

PROJECT TITLE
RESIDENTIAL DEVELOPMENT

LOCATION
**1667 SUNNINGDALE BEND
MISSISSAUGA ON**

DRAWING TITLE
SERVICING PLAN

SCALE	1:250	DESIGN BY	SP	PROJECT No.	1407
DRAWN BY	AJP	CHECKED BY	JN	PLAN No.	S1
DATE	2023/06/15	SHEET	1 OF 1		



FILENAME: P:\1407 Welton\Drawings\DWG\1407GS.dwg
 PLOIDATE: Jun 15, 2023 - 2:42pm