

TREE INVENTORY AND PRESERVATION RECOMMENDATIONS

Tag #	Common Name	Latin Binomial	DBH (cm)	Condition	March 8 2023 Condition	Category	Remarks	Updated Remarks	Recommendations
1703	Manitoba Maple	<i>Acer negundo</i>	20	Good		MT	(Alternate Tag#: 611745)	TREE REMOVED	TREE REMOVED
1704	Manitoba Maple	<i>Acer negundo</i>	24 x 16	Fair		SL	Co-dominant stems from base, with included bark at crotch Smaller stem growing into chain link fence	TREE REMOVED	TREE REMOVED
1705	Manitoba Maple	<i>Acer negundo</i>	34 x 18 x 9 x 16	Fair		PP	3 dominant leaders with included bark at base 1 stem failed on east side of fence Potential decay at base	TREE REMOVED	TREE REMOVED
1706	Manitoba Maple	<i>Acer negundo</i>	16 x 13 x 21 x 20	Fair		PP	Grown through fence some branch dieback Decay at base	TREE REMOVED	TREE REMOVED
1707	Manitoba Maple	<i>Acer negundo</i>	24	Fair	n/c	PP	Stem is bowed/misshapen		Preserve & Protect Sediment fence to act as Tree Protection Fencing
1708	Manitoba Maple	<i>Acer negundo</i>	25 x 31	Fair	Poor	PP	Co-dominant from base Wild grape in crown	Central leader has died back	Preserve & Protect Sediment fence to act as Tree Protection Fencing
1709	Hawthorn	<i>Crataegus spp.</i>	21 x 16 x 12	Fair	Fair	PP	3 stems grown together with severe included bark	Pruning stubs; deadwood throughout crown	Preserve & Protect Sediment fence to act as Tree Protection Fencing
1710	Manitoba Maple	<i>Acer negundo</i>	17 x 17	Good		B	2 Stems Located on shared eastern boundary	TREE REMOVED	TREE REMOVED
1711	White Elm	<i>Ulmus americana</i>	20 x 14 x 13	Poor		SL	3 stems Many borer holes (potential for Dutch Elm Disease) Crown is thin	TREE REMOVED	TREE REMOVED
1712	Manitoba Maple	<i>Acer negundo</i>	15	Poor		PP	(Alternate Tag #: 611736) Misshapen bole Crown covered in wild grape	TREE REMOVED	TREE REMOVED
1713	Manitoba Maple	<i>Acer negundo</i>	42 x 38	Poor	Poor	PP	Co-dominant stems with included bark at base Branch dieback throughout	Broken branches with epicormic branching	Preserve & Protect Install Tree Protection Fencing
1714	Chinese Elm	<i>Ulmus parvifolia</i>	17	Poor		SL	Small crown		TREE REMOVED
1715	Chinese Elm	<i>Ulmus parvifolia</i>	23	Fair	Poor	SL	Suppressed crown	Large deadwood	Preserve & Protect Install Tree Protection Fencing
1716	Manitoba Maple	<i>Acer negundo</i>	69	Fair	Fair	PP	Included bark at main crotch with large swelling Crown is imbalanced Branch dieback throughout crown	Large limb on north side removed	Preserve & Protect Install Tree Protection Fencing
1717	Horsechestnut	<i>Aesculus hippocastanum</i>	14 x 34	Very Good	Good	PP	Co-dominant stems Smaller stem has some cavities along bole	Deadwood throughout crown; crown suppressed due to shading	Preserve & Protect Install Tree Protection Fencing
1718	Manitoba Maple	<i>Acer negundo</i>	68	Poor	Very Poor	PP	Large failed limb on north side Large cavity on south side of central stem Potential root decay due to cavity on north side of root flare	One large scaffold limb removed with extensive decay at limb failure	Preserve & Protect Install Tree Protection Fencing
1719	Green Ash	<i>Fraxinus pennsylvanica</i>	20	Dead		SL	Tree is mostly dead, with small epicormic branching at base of bole Infested with Emerald Ash Borer	TREE REMOVED	TREE REMOVED
1720	Manitoba Maple	<i>Acer negundo</i>	16 x 16	Good	Good	B	Co-dominant stems with included bark at base Located on shared southern boundary		Preserve & Protect Install Tree Protection Fencing
1721	Manitoba Maple	<i>Acer negundo</i>	16	Fair		SL	Crown imbalanced to the south	TREE REMOVED	TREE REMOVED
1722	Manitoba Maple	<i>Acer negundo</i>	16 x 12 x 15	Good	Good	SL	3 main stems with included bark at base		Preserve & Protect Install Tree Protection Fencing
1723	Manitoba Maple	<i>Acer negundo</i>	14 x 12 x 15	Fair	Fair	B	3 main stems with included bark at base Located on shared southern boundary	One stem removed	Preserve & Protect Install Tree Protection Fencing
1724	Manitoba Maple	<i>Acer negundo</i>	18	Fair		SL	Tree is growing on a severe angle (~45 deg.) to the north	TREE REMOVED	TREE REMOVED
1725	Manitoba Maple	<i>Acer negundo</i>	15 x 7	Good	Good	SL	(Alternate Tag#: 611737)		Preserve & Protect Install Tree Protection Fencing
1726	Manitoba Maple	<i>Acer negundo</i>	19 x 17 x 16	Fair	Fair	PP	Co-dominant stems with included bark and decay at main crotch	One stem removed	Preserve & Protect Install Tree Protection Fencing
1727	Manitoba Maple	<i>Acer negundo</i>	21	Good	Poor	SL		Torn branches; small crown	Preserve & Protect Install Tree Protection Fencing
1728	Manitoba Maple	<i>Acer negundo</i>	41 x 23 x 28	Fair	Fair	SL	(Alternate Tag#: 611739) 4 main stems 23 cm dia. stem is severely leaning to the north	Branch stubs; minor deadwood	Preserve & Protect Install Tree Protection Fencing
1729	Japanese Tree Lilac	<i>Syringa reticulata</i>	7	Fair	Fair	MT	Regional Tree 100mm cal.		Remove
1730	Japanese Tree Lilac	<i>Syringa reticulata</i>	7	Poor	Poor	MT	Regional Tree 90 mm cal. Wound on west side of base of bole Epicormic branching along bole Tip dieback throughout crown		Remove
1731	Japanese Tree Lilac	<i>Syringa reticulata</i>	6	Poor	Poor	MT	Regional Tree 90 mm Cal. Crown is thin; branch dieback throughout		Remove
1732	Japanese Tree Lilac	<i>Syringa reticulata</i>	6	Poor	Poor	MT	Regional Tree 90 mm Cal. Branch dieback throughout crown Epicormic branching along bole		Remove
1733	Callery Pear	<i>Pyrus calleryana</i>	10	Poor	Poor	MT	Regional Tree Epicormic branching from base Branch and tip dieback throughout		Remove
1734	Callery Pear	<i>Pyrus calleryana</i>	12	Poor	Poor	MT	Regional Tree Epicormic branching from base Branch and tip dieback throughout		Remove
1735	Japanese Tree Lilac	<i>Syringa reticulata</i>	7	Fair	Fair	MT	100 mm Cal. Crown is thin; tip dieback throughout		Remove
1736	Honeylocust	<i>Gleditsia triacanthos cv.</i>	52	Good	Good	MT	Located on road allowance on west side of Colettea Road (fronting #7246 Colette Road) Branch dieback and deadwood throughout crown		Preserve & Protect Install Tree Protection Fencing

NOTES

Prior to site disturbance the owner must confirm that no migratory birds are making use of the site for nesting. The owner must ensure that the works are in conformance with the Migratory Bird Convention Act and that no migratory bird nests will be impacted by the proposed work.

It is the applicants' responsibility to discuss potential tree injury of trees on shared property lines with their neighbours. Should such trees be injured to the point of instability or death the applicant may be held responsible for removal and such issues would be dealt with in civil court or through negotiation. The applicant would be required to replace such trees to the satisfaction of the City of Mississauga.

**TREE PROTECTION ZONE:**  
No construction activity including grade changes, surface treatments or excavations of any kind is permitted within the area identified on the Tree Protection Plan or Site Plan as a Tree Protection Zone (TPZ).  
No storage of materials or fill is permitted within the TPZ.  
No movement or storage of vehicles or equipment is permitted within the TPZ.  
The area(s) identified as a TPZ must remain undisturbed at all times.

**TREE PROTECTION BARRIERS:**  
Tree protection barriers for trees situated on the City road allowance where visibility must be maintained, can be 1.2m (4ft.) high and consist of chain link, or orange plastic web snow fencing on a 2" x 4" wood frame. All supports and bracing used to secure the barrier should be located outside the TPZ. All supports and bracing should minimize damage to roots outside the TPZ.  
Where some fill or excavate has to be temporarily located near a tree protection barrier, plywood must be used to ensure no material enters the TPZ.  
If the TPZ needs to be reduced to facilitate construction access, the tree protection barrier must be maintained at a lesser distance and the exposed TPZ protected with plywood and wood chips. This must first be approved by the City of Mississauga.

**Trees on private property situated on or adjacent to construction sites:**  
Tree protection barriers must be installed around trees to be protected using plywood clad hoarding or an equivalent approved by the City of Mississauga. All supports and bracing to safely secure the barrier should be outside the TPZ. All such supports and bracing should minimize damage to roots outside the TPZ.

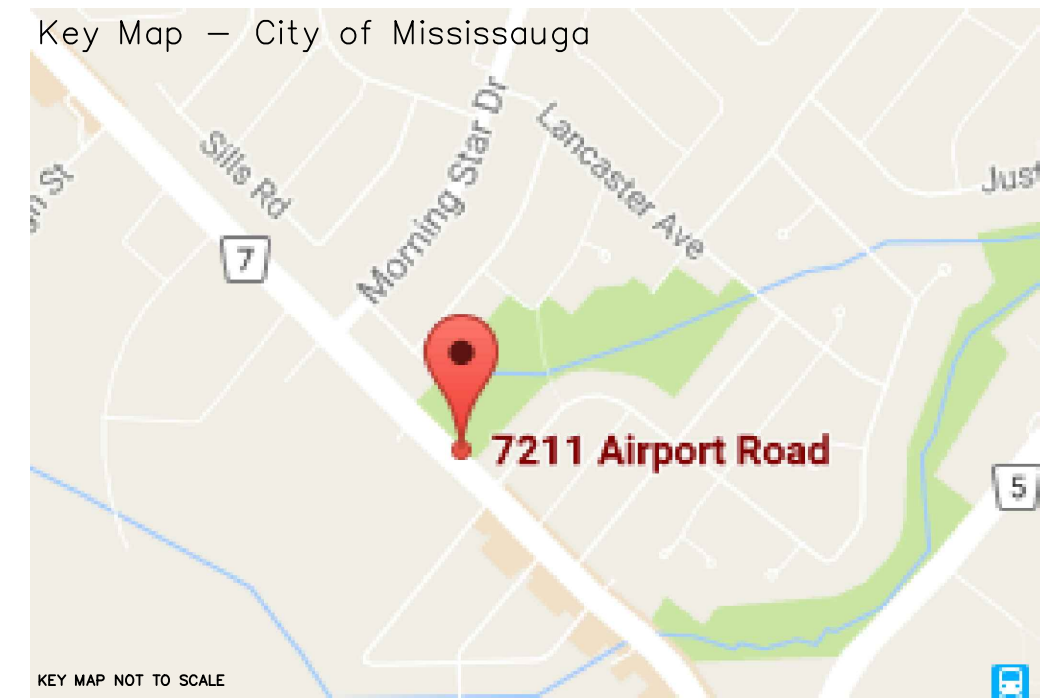
All tree protection hoarding must remain in place and in good condition during demolition and/or construction and must not be altered or moved until authorized by the City of Mississauga. Established tree protection zones must not be used as construction access, storage or staging areas. Grade changes are not permitted within established TPZ.

All additional tree protection or preservation requirements, above and beyond the required tree protection hoarding, must be undertaken or implemented as detailed in the City of Mississauga approved arborist report and/or the approved tree protection plan and to the satisfaction of the City of Mississauga.

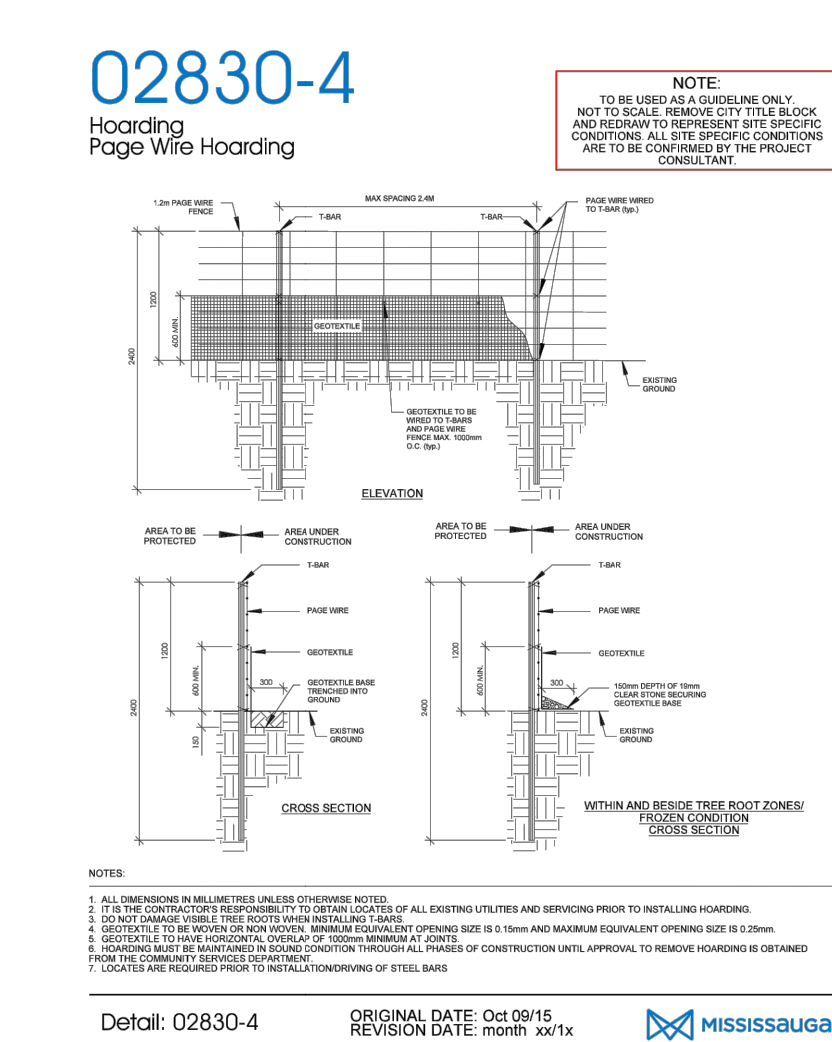
Sediment control fencing shall be installed in the locations as indicated in the the City of Mississauga approved sediment control plan. The sediment control fencing must be installed to Ontario Provincial Standards (OPSD-219.110) and to the satisfaction of the City of Mississauga.

**General Note:**  
Prior to the commencement of any site activity the tree protection barriers specified on this plan must be installed and written notice provided to the City of Mississauga. The tree protection barriers must remain in effective condition until all site activities including landscaping are complete. Written notice must be provided to Urban Forestry prior to the removal of the tree protection barriers.

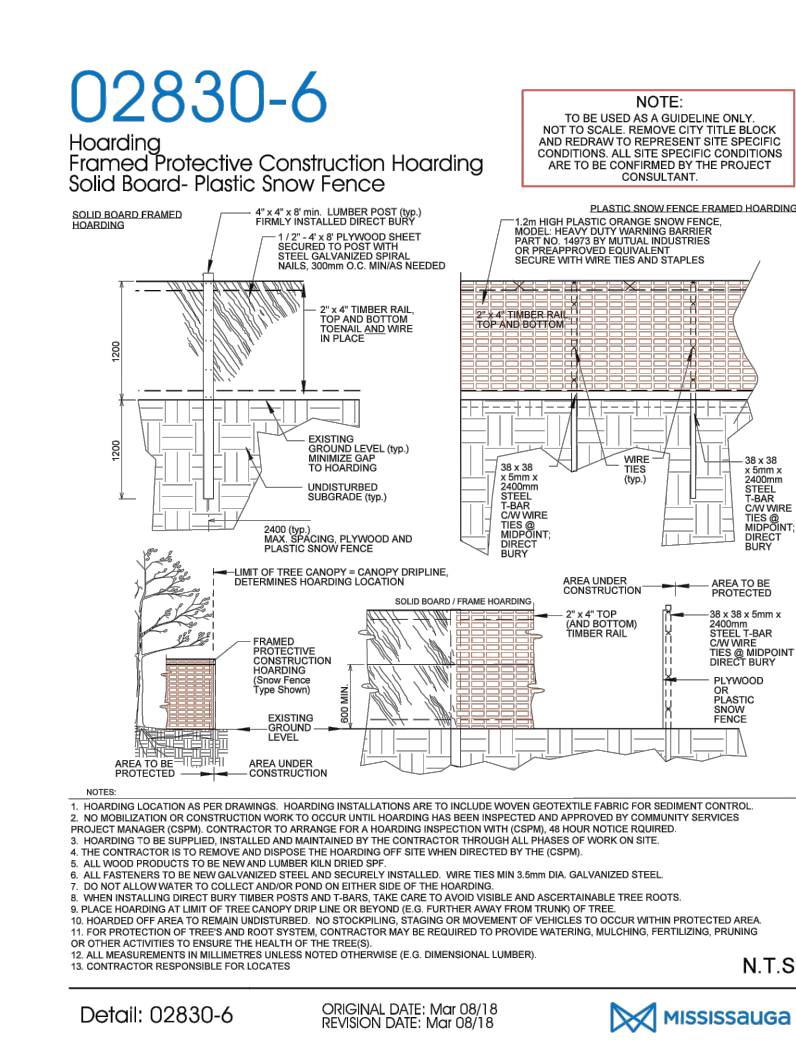
**ARBORICULTURAL WORK:**  
Any roots or branches which extend beyond the TPZ indicated on this plan which require pruning, must be pruned by a qualified Arborist or other tree professional as approved by the City of Mississauga. All pruning of tree roots and branches must be in accordance with good arboricultural standards.



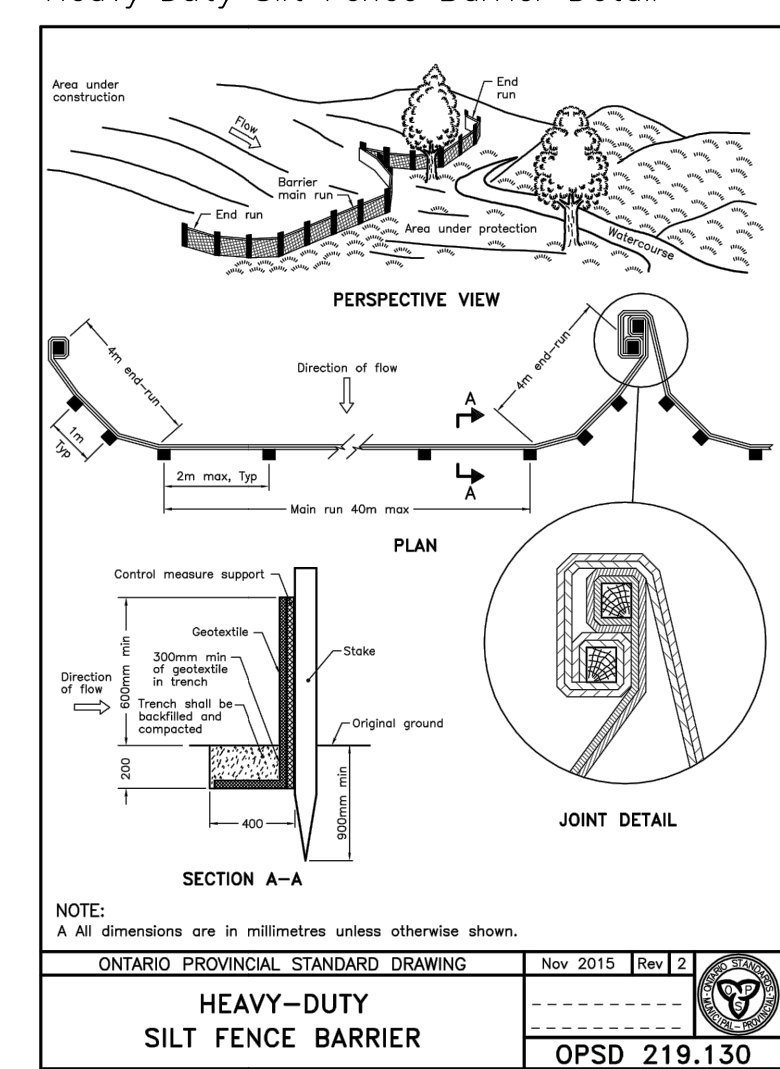
Tree Protection Fencing Detail 02830-4



Tree Protection Fencing Detail 02830-6



Heavy Duty Silt Fence Barrier Detail



Tree Maintenance Schedule

Timing	Inspection/Maintenance Activity
a. Prior to Construction Activities Commencing	<ol style="list-style-type: none"> <li>Conduct tree removals as recommended in the Tree Inventory and Plan of Preservation Report and approved by City of Mississauga</li> <li>Erect Tree Protection Fencing in approved locations</li> <li>Conduct pre-construction tree maintenance as outlined in Section 4 of this report on trees identified to be <b>Preserved &amp; Protected</b> <ol style="list-style-type: none"> <li>Identify any pruning requirements for overhanging limbs to avoid mechanical damage. Provide pruning by a Qualified Arborist prior to construction commencing.</li> </ol> </li> </ol>
b. During Excavation for Underground Parking	<ol style="list-style-type: none"> <li>Ensure a Certified Arborist is on-site during excavation to complete requisite root pruning on exposed roots</li> <li>Check TPZ fencing for any deficiencies and repair if required</li> </ol>
c. Post-Excavation	<ol style="list-style-type: none"> <li>The Consulting Arborist should be on-site to inspect the excavated area to ensure all required root pruning is completed</li> <li>Tree preservation fencing should be re-inspected to ensure integrity of fencing is maintained once excavation is complete</li> <li>Inspect for any residual potential overhanging or interfering limbs of preserved trees. Recommendations can be made to mitigate any potential mechanical injuries at this time</li> </ol>
d. Building Completion	<ol style="list-style-type: none"> <li>The consulting arborist shall inspect the trees scheduled to be preserved once all activities relating to construction of the main condominium complex is completed.</li> <li>Recommendations for follow-up maintenance or mitigation can be made at this time, if required</li> </ol>
e. Cessation of All Construction Activities	<ol style="list-style-type: none"> <li>Once all construction activities have ceased, the Consulting Arborist shall inspect the trees scheduled for preservation</li> <li>Recommendations for follow-up maintenance or mitigation shall be completed at this time, if required</li> </ol>

CONSULTING ARBORIST

TREE CARE & URBAN FORESTRY CONSULTANTS INC.  
P.O. BOX 2453 (STN. B) RICHMOND HILL, ON L4E 1A5  
T: (905) 773-1733 E: INFO@7OAKSTREECARE.CA

SURVEYING

MITSCHKE & AZIZ INC.  
ONTARIO LAND SURVEYORS

ARCHITECTURE

CHINTAN VIRANI ARCHITECT INC.

07	UPDATED SITE PLAN/SITE GRADING	JUN 5 2023
06	UPDATED SITE PLAN/SITE GRADING	MAY 12 2023
05	UPDATED SITE PLAN/SITE GRADING	SEPT 29 2021
04	UPDATED SITE GRADING	SEPT 1 2021
03	UPDATED SITE GRADING	JAN 23 2020
02	UPDATED SITE PLAN	JAN 13 2020
01	UPDATED FOR NEW OWNER	NOV 20 '17
REV #	REVISIONS	DATE

PROJECT

PROPOSED SENIOR CONDOMINIUM RESIDENCE  
7211 - 7233 AIRPORT ROAD  
MISSISSAUGA, ONTARIO

TITLE

TREE PRESERVATION PLAN  
-  
NOTES

DATE

NOV 22 2016

SCALE

DRAWN BY

LAS

PROJECT NO.

TA - 16 - 033

DRAWING NO.

TIPP - 01.1

PAGE

2 OF 2