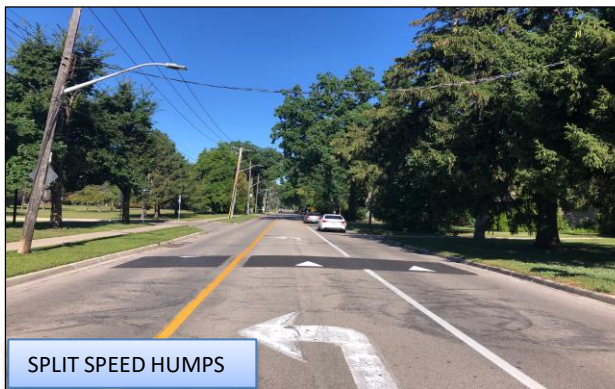
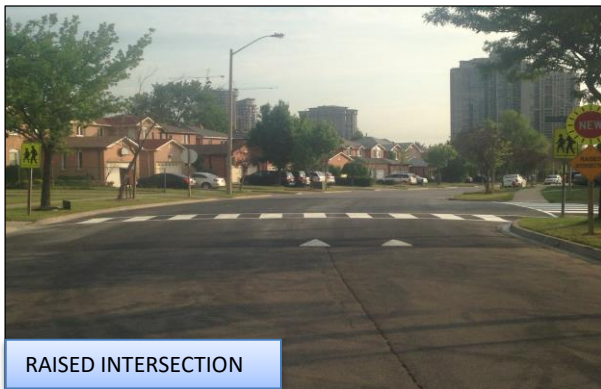
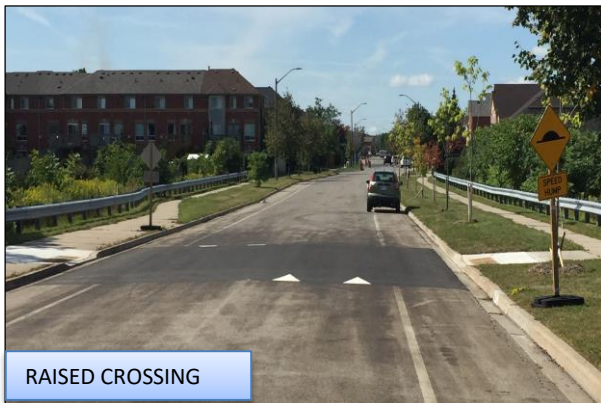
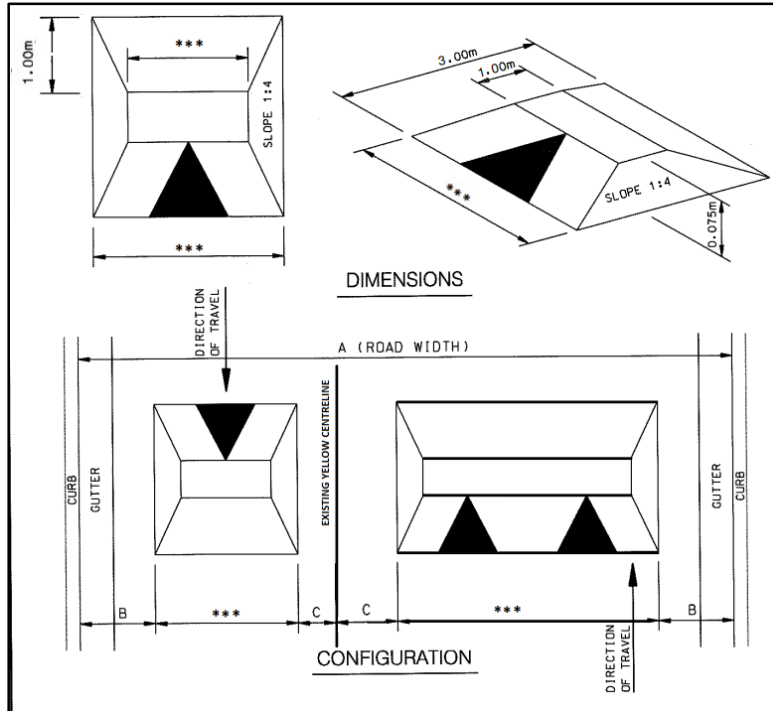


TRAFFIC CALMING DEVICES



SPLIT SPEED HUMP DESIGN

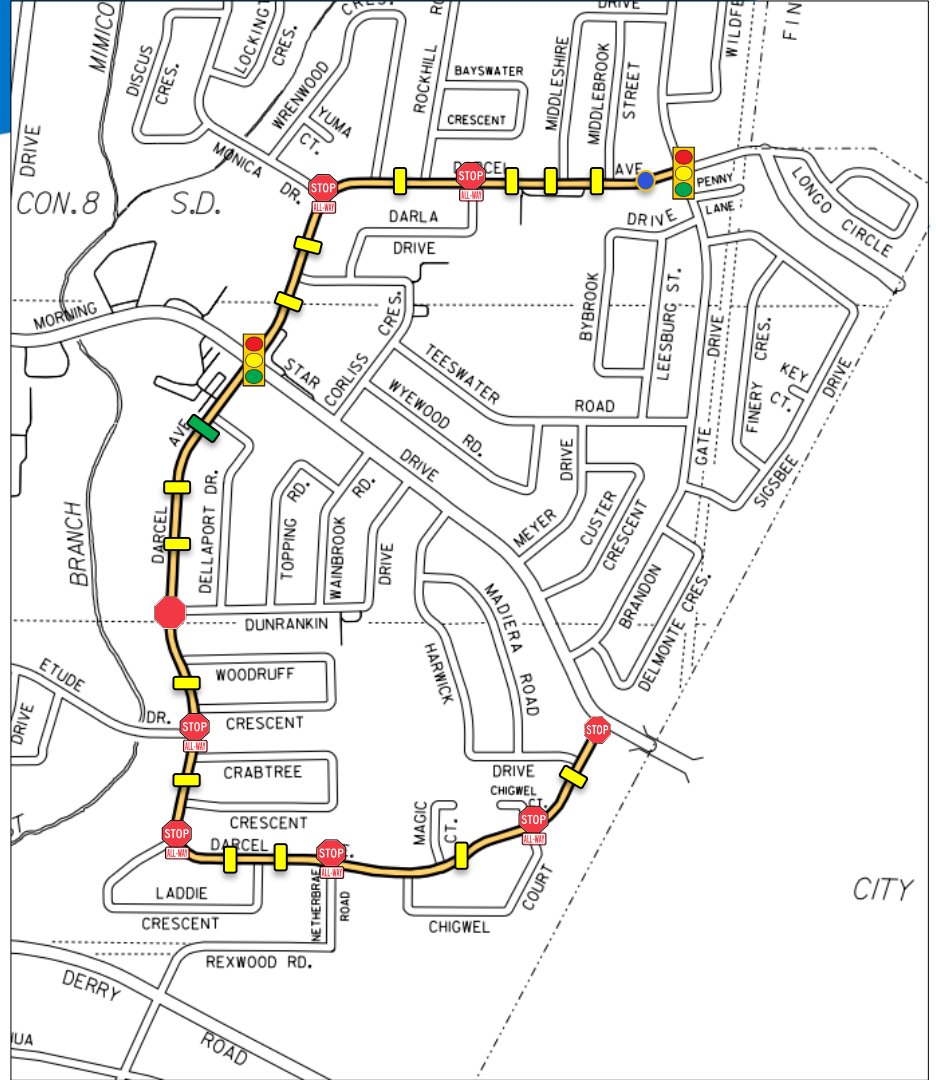


- Designed to discourage drivers from travelling at excessive speeds
- Use on neighbourhood roadways

Darcel Avenue

Between Brandon Gate Drive and Morning Star Drive (east intersection)

-  Existing All-Way Stop Locations
-  Existing Traffic Signal Locations
-  Existing Stop Location
-  Proposed Flexible Bollard Location
-  Proposed Split Speed Hump Locations
-  Proposed New All-Way Stop Location
-  Proposed Raised Crossing Location



Darcel Avenue

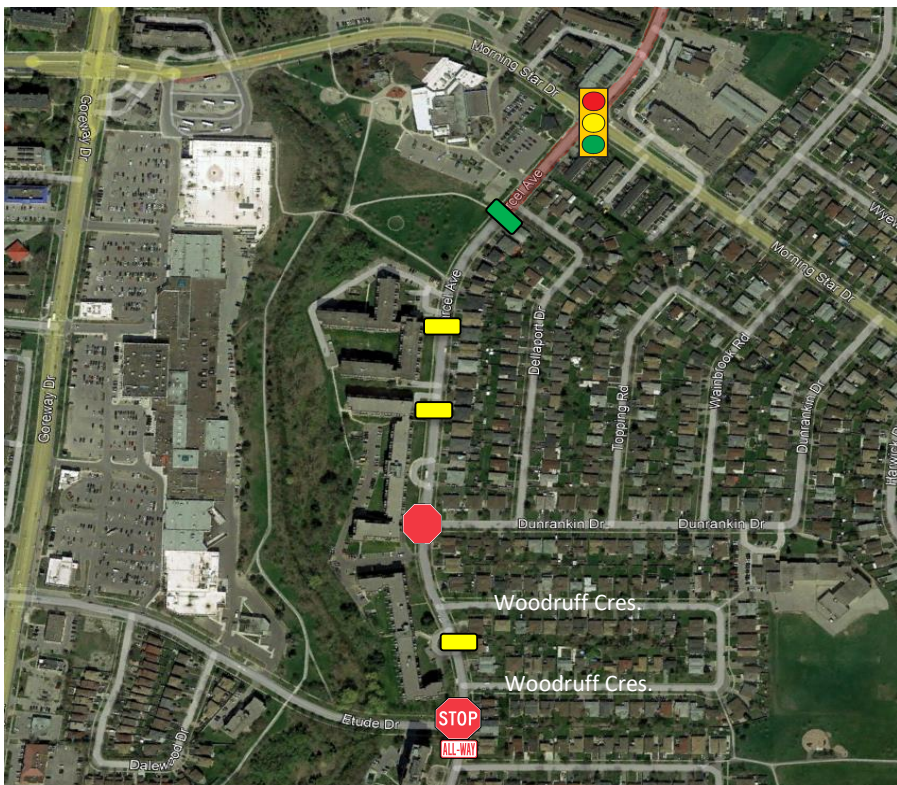
Between Brandon Gate Drive and Moring Star Drive (north intersection)



-  Existing Traffic Signal Locations
-  Existing All-Way Stop Locations
-  Proposed Flexible Bollard Location
-  Proposed Split Speed Hump Locations
-  30km/h School Zone

Darcel Avenue

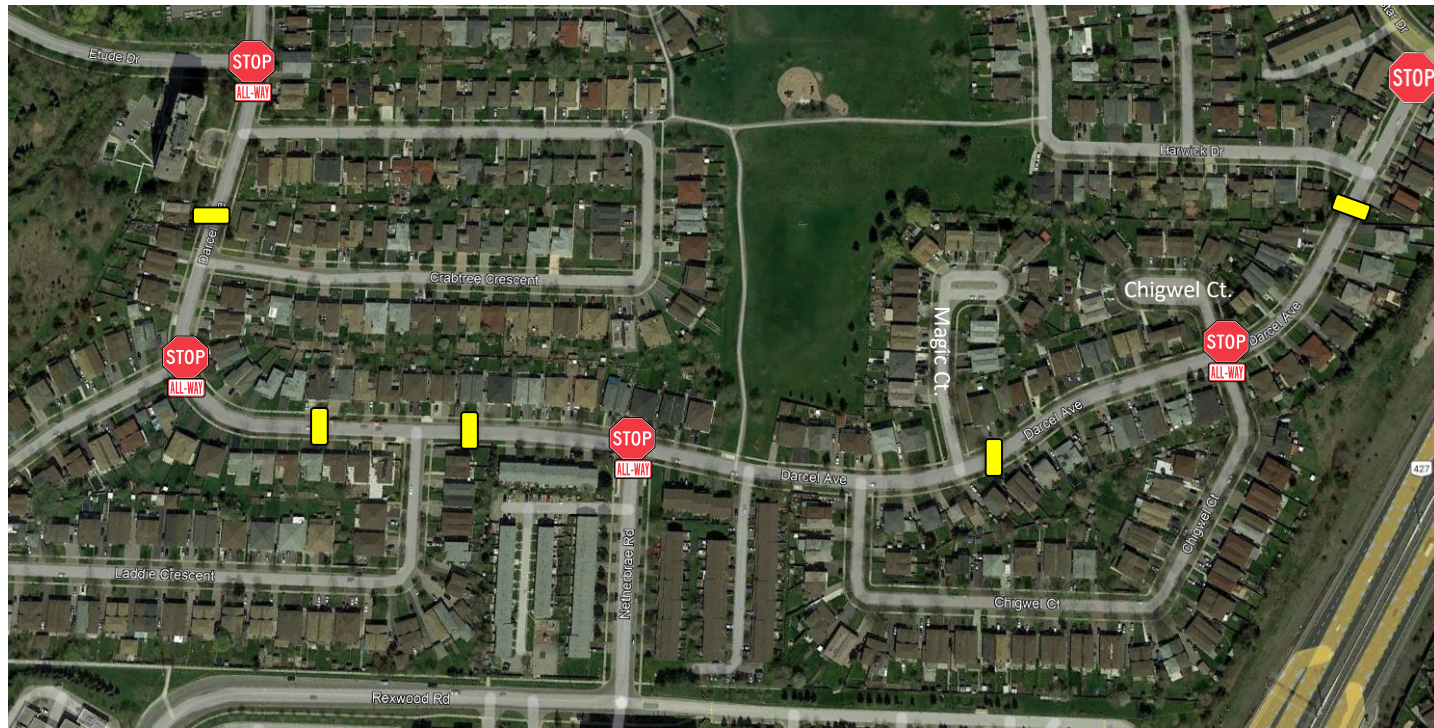
Between Moring Star Drive (north intersection) and Etude Drive




-  Existing Traffic Signal Location
-  Existing All-Way Stop Location
-  Proposed Raised Crossing Location
-  Proposed New All-Way Stop Location
-  Proposed Split Speed Hump Locations
-  30km/h School Zone

Darcel Avenue

Between Etude Drive and Morning Star Drive (east intersection)



-  Existing All-Way Stop Locations
-  Existing Stop Location
-  Proposed Split Speed Hump Locations