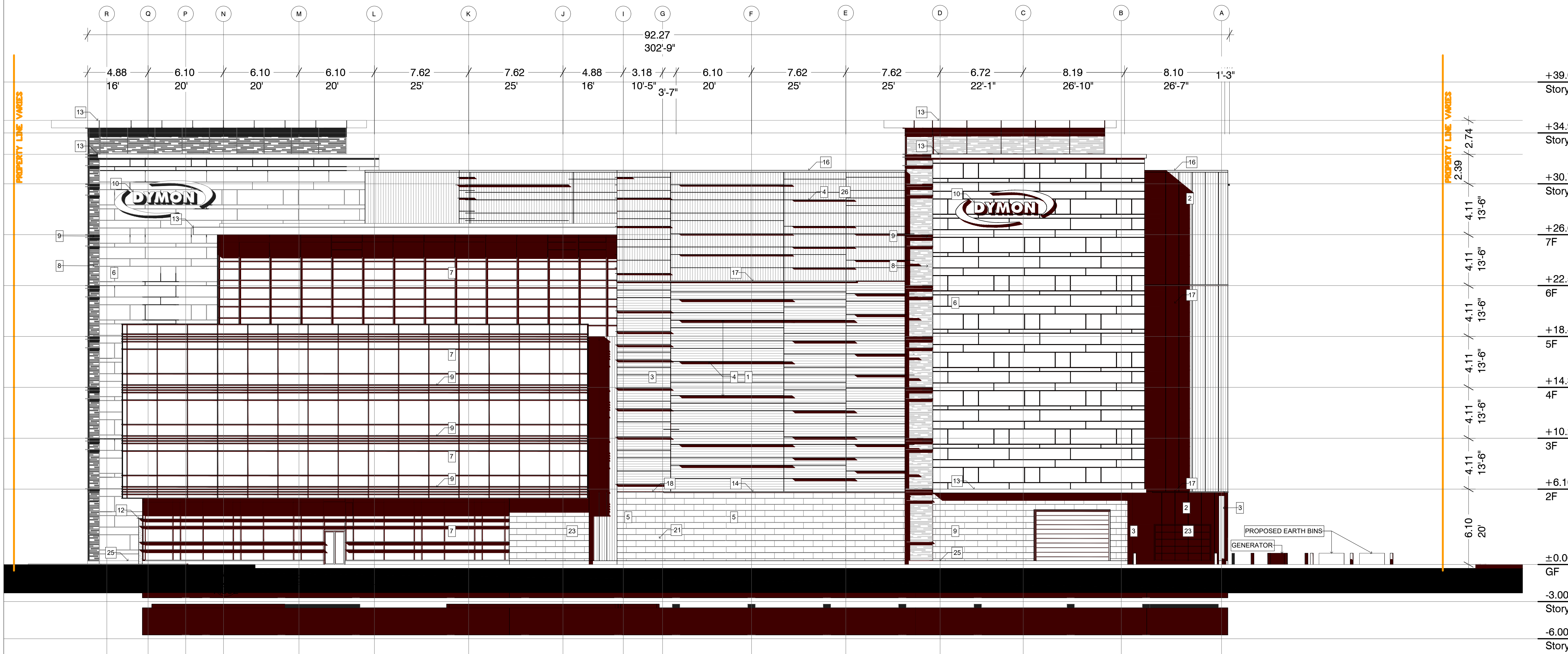
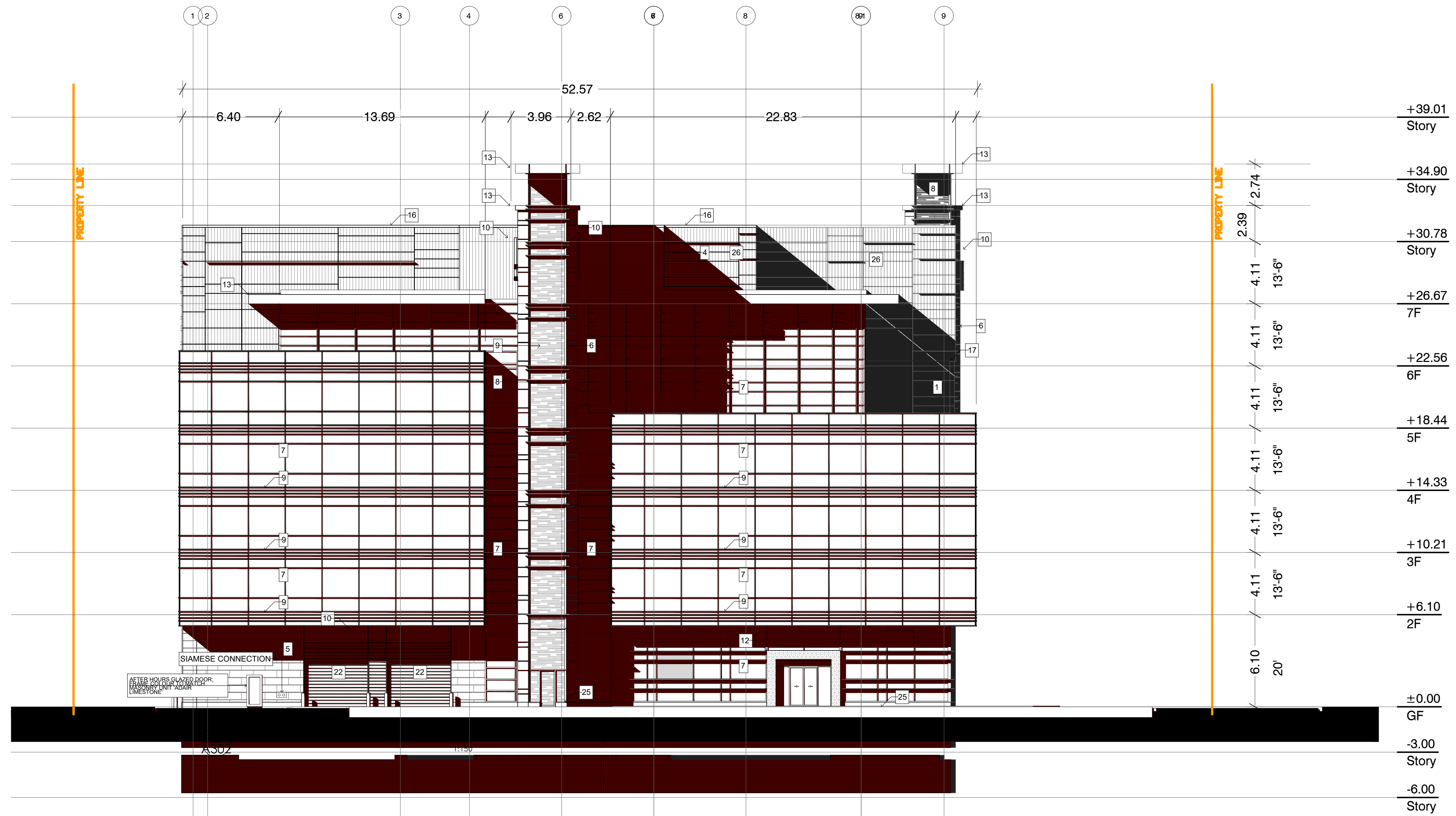


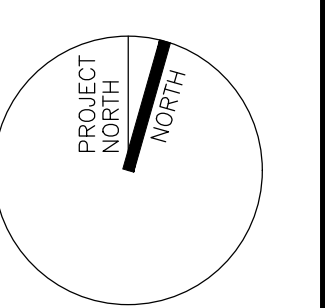
**LEGEND**

- 1 INSULATED METAL PANEL (IMP) SYSTEM - HORIZONTAL ORIENTATION - ARCHITECTURAL PROFILE - COLOUR: WEATHERED ZINC
- 2 INSULATED METAL PANEL (IMP) SYSTEM - VERTICAL ORIENTATION - LIGHT MESA PROFILE - COLOUR: WEATHERED ZINC
- 3 INSULATED METAL PANEL (IMP) SYSTEM - VERTICAL ORIENTATION (RECESSES & REVEALS) - LIGHT MESA PROFILE - COLOUR: MEDIUM BRONZE
- 4 KINGSPAN KARRIER FIN - STANDARD RECTANGLE FIN COLOUR: WEATHERED ZINC
- 5 3 1/2" ARCHITECTURAL MASONRY UNIT - ARISCAFT ADAIR LESTONE - FINISH: FINE DRESSED SEPIA-VEINED - RUNNING BOND
- 6 ALUCOIL - ALUMINUM COMPOSITE MATERIAL - FINISH: LIGHT WENGE 4mm FR CORE
- 7 CURTAIN WALL GLAZING - FINISH: VISION GLASS
- 8 CURTAIN WALL GLAZING - FINISH: FRITTED WINDOW FILM ON VISION GLASS
- 9 SPANDREL PANEL - COLOUR TO MATCH IMP WEATHERED ZINC
- 10 INTERNALLY LIT SIGNAGE - COLOUR: TBD
- 11 GLASS SIGNAGE BAND - COLOUR: TBD
- 12 BACK-LIT GLASS WITH FRIT PATTERN COLOUR TO MATCH - BOLD BLUE WITH WHITE FRITTING
- 13 METAL CANOPY - COLOUR TO MATCH IMP WEATHERED ZINC
- 14 CONTINUOUS BENT FLASHING SILL - COLOUR TO MATCH IMP WEATHERED ZINC
- 15 CONTINUOUS BENT METAL CAP - PREFINISHED - COLOUR TO MATCH IMP MEDIUM BRONZE
- 16 FIRESTONE PREFINISHED METAL CAP - FINISH: SLATE GREY (ALL BENT METAL CAP PARAPETS)
- 17 PREFINISHED METAL IMP STACK JOINT COVER TRIM - COLOUR TO MATCH IMP WEATHERED ZINC
- 18 PREFINISHED METAL IMP STACK JOINT COVER TRIM - COLOUR TO MATCH IMP MEDIUM BRONZE
- 19 INSULATED HOLLOW METAL DOOR - COLOUR TO MATCH IMP WEATHERED ZINC
- 20 INSULATED HOLLOW METAL DOOR - COLOUR TO MATCH ARCHITECTURAL MASONRY UNIT ADAIR LESTONE
- 21 INSULATED HOLLOW METAL DOOR - COLOUR TO MATCH VERTICAL IMP MEDIUM BRONZE
- 22 HIGH SPEED ROLL-UP O/H DOOR - FINISH: STEEL FRAME WITH POLYCARBONATE VISION SLATS
- 23 INSULATED O/H DOOR - COLOUR TO MATCH IMP WEATHERED ZINC
- 24 INSULATED O/H DOOR - COLOUR TO MATCH IMP MEDIUM BRONZE
- 25 POURED CONCRETE
- 26 ALUMINUM COMPOSITE MATERIAL - HORIZONTAL ORIENTATION - COLOUR: WEATHERED ZINC 4mm FR CORE



NO.	DATE	DESCRIPTION
10	MAY/17/23	FOR SPA SUBMISSION #2
9	APR/05/23	REVISED GF LOADING AREA
8	APR/03/23	FOR COORDINATION
7	MAR/09/23	REVISED CONCEPT PLAN
6	MAY/03/23	FOR REVIEW & COORDINATION
5	APR/03/23	FOR COORDINATION
4	MAR/10/23	REVISED CONCEPT PLAN
3	NOV/03/22	SPA SUBMISSION
2	OCT 24/ 22	FOR REVIEW & COORDINATION
1	SEPT 21/ 22	FOR REVIEW & COORDINATION

CONTRACTOR MUST CHECK AND VERIFY ALL DIMENSIONS AND BE RESPONSIBLE FOR SAME, REPORTING ANY DISCREPANCIES TO THE ARCHITECT BEFORE COMMENCING WORK.  
ALL DRAWINGS, PRINTS AND SPECIFICATIONS ARE THE PROPERTY OF THE ARCHITECT AND MUST BE RETURNED TO HIM ON COMPLETION OF WORK.  
LATEST APPROVED DRAWINGS ONLY TO BE USED FOR CONSTRUCTION. PRINTS ARE NOT TO BE SCALED.



**DYMON CAPITAL CORP.**  
2-1830 WALKLEY ROAD  
OTTAWA ON, K1H 8K3

PROJECT NAME  
**7 STOREY SELF STORAGE,  
OFFICE & RETAIL**  
6333 HURONTARIO STREET  
MISSISSAUGA ON

DRAWN BY AT

CHECKED BY R.P.

DATE October 25, 2022

SCALE 1:150

DRAWING TITLE

**BLDG ELEVATIONS**

PROJECT NO. DRAWING NO.

**22-08 A302**