

BUILDING HEIGHT
 HT= 32 600
 BUILDING HEIGHT HAS BEEN MEASURED FROM ESTABLISHED GRADE TO THE TOP OF THE STRUCTURAL SLAB

ELEVATION HEIGHT
 1- HEIGHT MEASURED TO THE TOP OF STRUCTURAL SLAB.

3 2023-05-19 RE ISSUED FOR OPA & ZBA COORDINATION
 2 2022-01-07 ISSUED FOR OPA & ZBA COORDINATION
 1 2021-03-02 ISSUED FOR PRE-APPLICATION MEETING

ALL DRAWINGS, SPECIFICATIONS AND RELATED DOCUMENTS ARE THE COPYRIGHT PROPERTY OF THE ARCHITECT AND MUST BE RETURNED UPON REQUEST. REPRODUCTION OF DRAWINGS, SPECIFICATIONS AND RELATED DOCUMENTS IN PART OR WHOLE IS FORBIDDEN WITHOUT THE ARCHITECT'S WRITTEN PERMISSION. THE CONTRACTOR IS RESPONSIBLE FOR CHECKING AND VERIFYING ALL LEVELS AND DIMENSIONS AND SHALL REPORT ALL DISCREPANCIES TO THE ARCHITECT AND OBTAIN CLARIFICATION PRIOR TO COMMENCING WORK. DO NOT SCALE DIMENSIONS FROM THE DRAWINGS.



CLIENT:

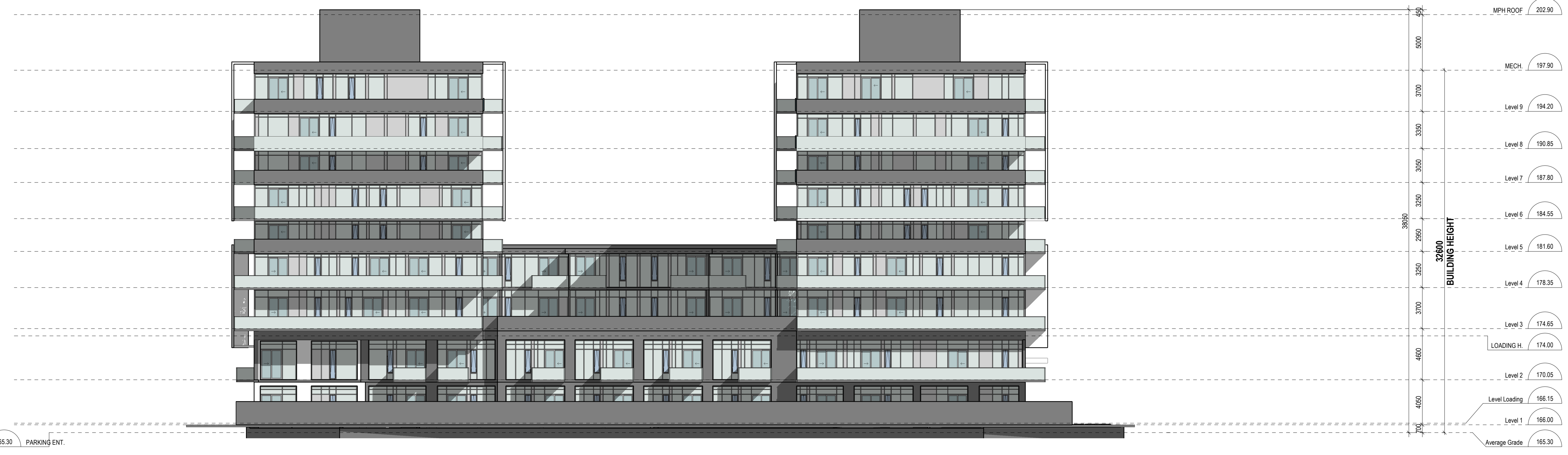
 L A M B DEVELOPMENT CORP

PROJECT:
THE MISS QUEEN
 21-51 QUEEN ST. N, MISSISSAUGA, ONTARIO

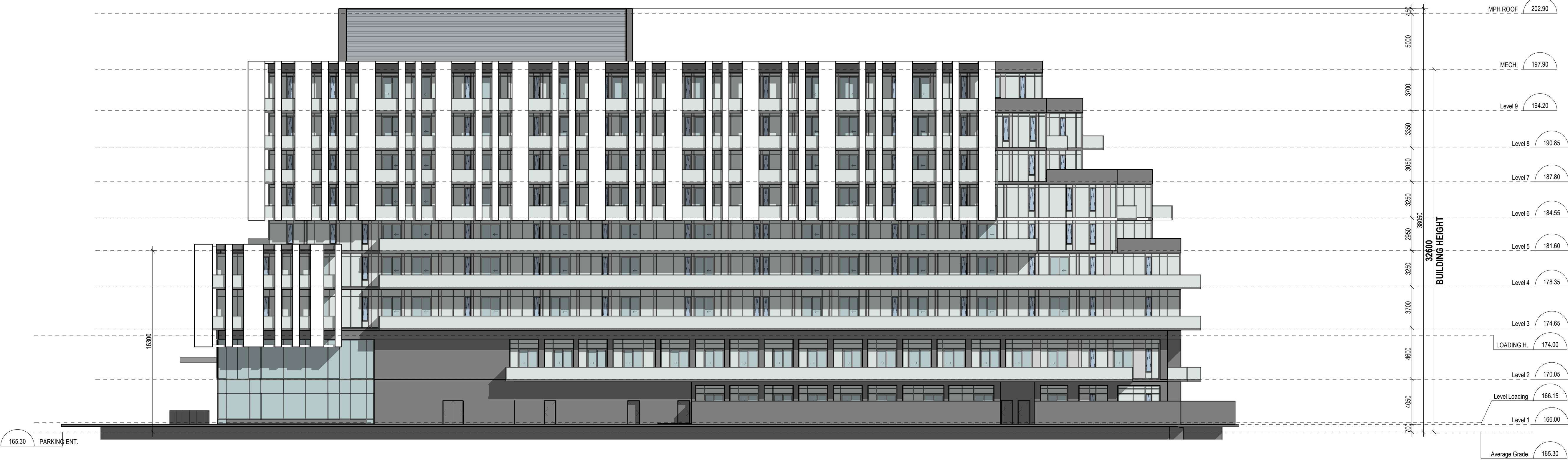
SCALE: As indicated
 DATE:

TITLE:
EAST AND SOUTH ELEVATION

PROJECT NO:
 20-121 **A-402**



1 East- Elevation
 A-402 1:200



2 South- Elevation
 A-402 1:200