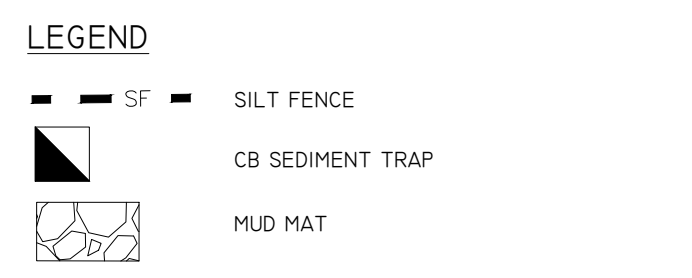
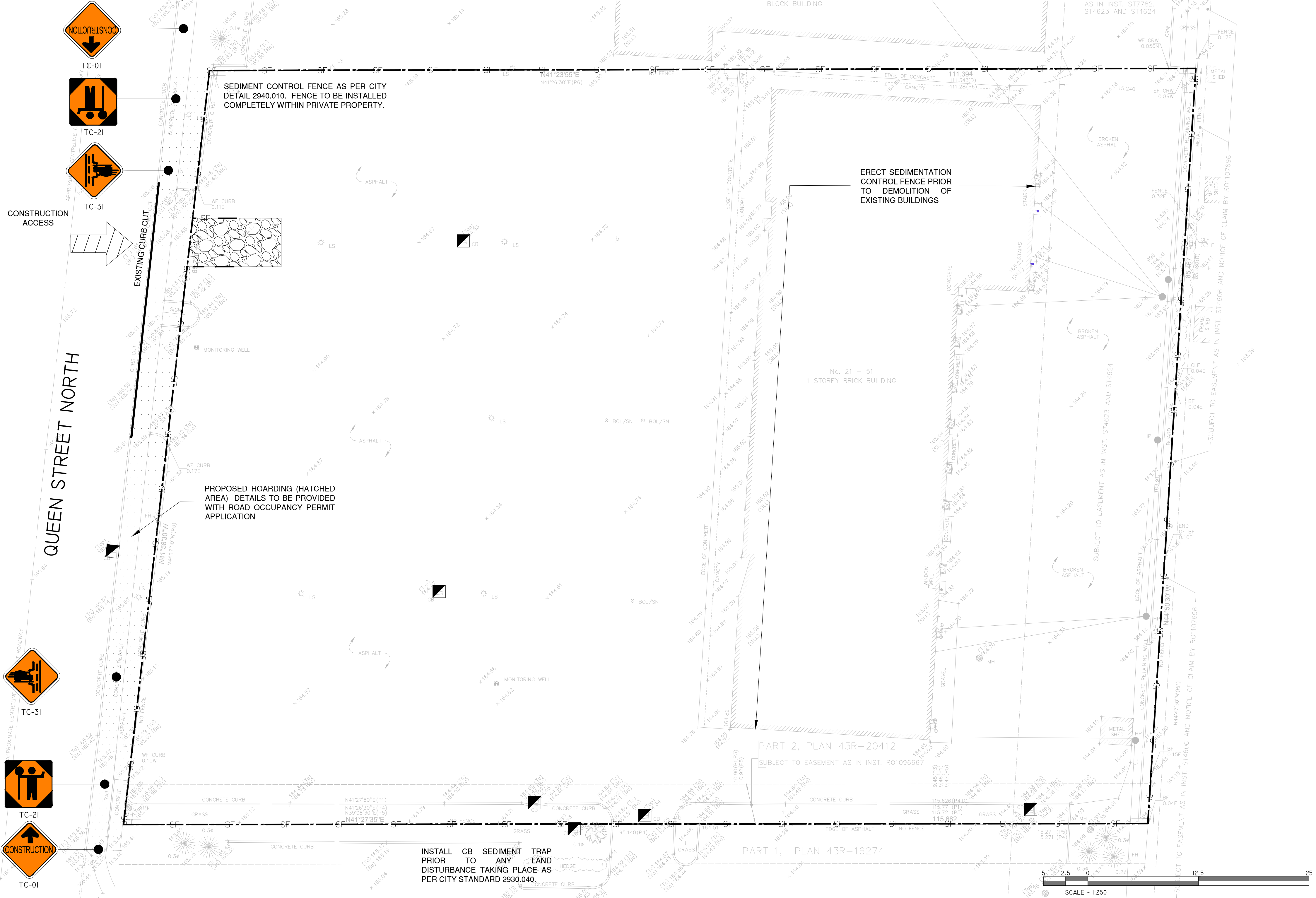
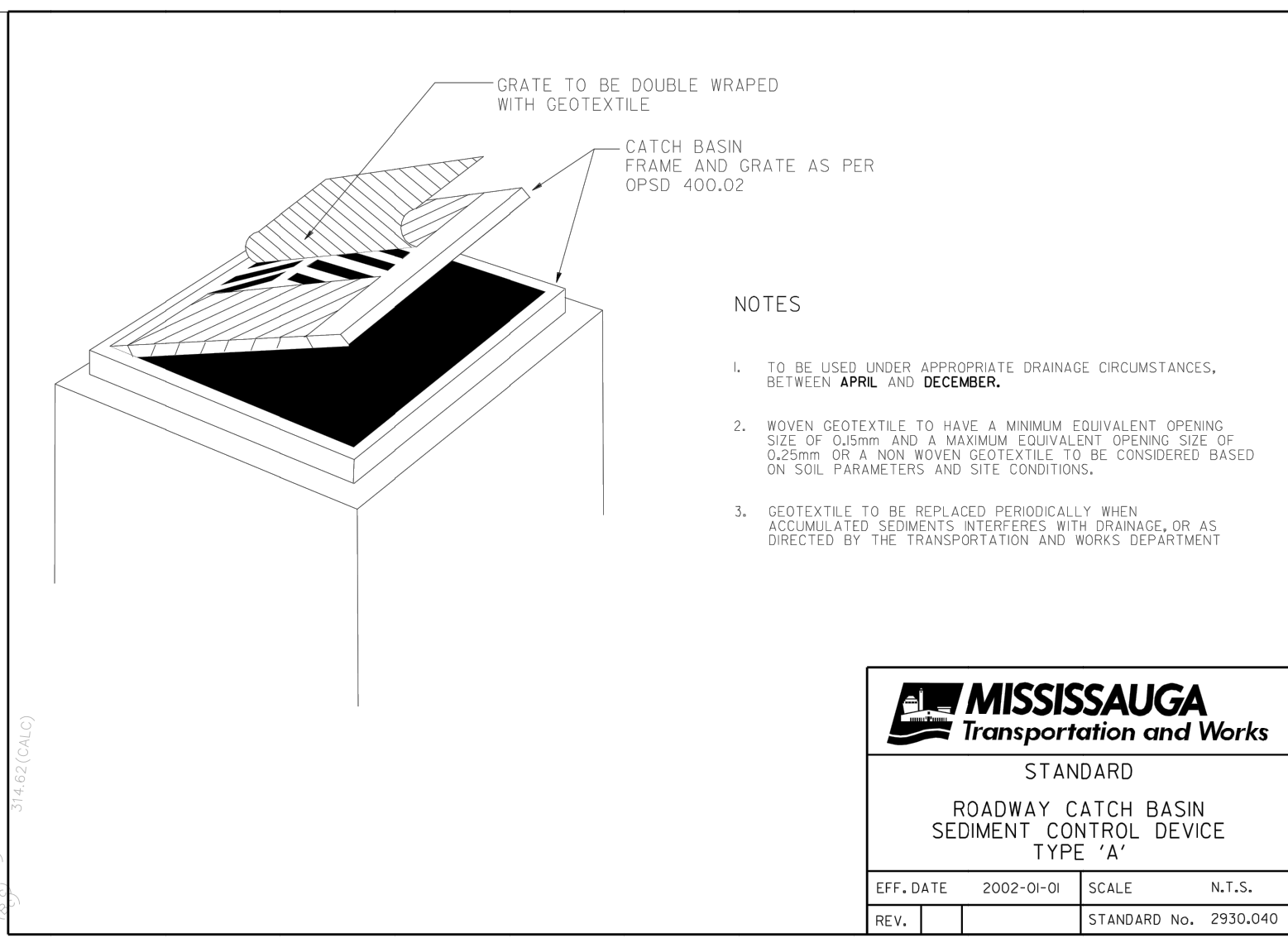


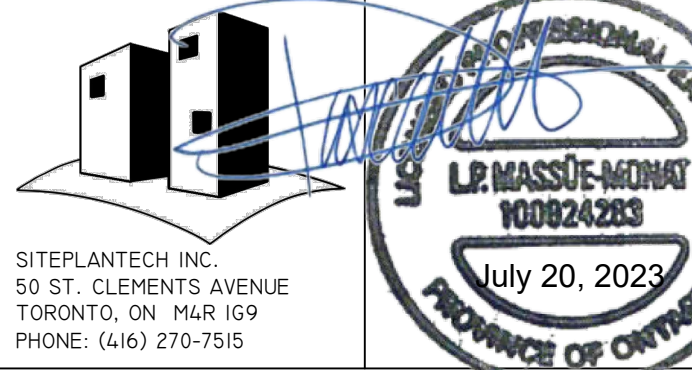
EROSION AND SEDIMENT CONTROL

- EROSION AND SEDIMENT CONTROL (ESC) MEASURES WILL BE IMPLEMENTED PRIOR TO, AND MAINTAINED DURING CONSTRUCTION PHASES, TO PREVENT ENTRY OF SEDIMENT INTO THE WATER. ALL DAMAGED EROSION AND SEDIMENT CONTROL MEASURES SHOULD BE REPAIRED OR REPLACED WITHIN 48 HOURS OF INSPECTION OR BOTH.
- ALL DISTURBED AREAS WILL BE MINIMIZED TO THE EXTENT POSSIBLE, AND TEMPORARILY OR PERMANENTLY STABILIZED OR RESTORED AS THE WORK PROGRESSES.
- THE EROSION AND SEDIMENT CONTROL STRATEGIES OUTLINED ON THE PLANS ARE NOT STATIC AND MAY NEED TO BE UPGRADED/AMENDED AS SITE CONDITIONS CHANGE TO MINIMIZE SEDIMENT LADEN RUNOFF FROM LEAVING THE WORK AREA. IF THE PRESCRIBED MEASURES ON THE PLANS ARE NOT EFFECTIVE IN PREVENTING THE RELEASE OF A DELETERIOUS SUBSTANCE, THEN ALTERNATIVE MEASURES MUST BE IMPLEMENTED IMMEDIATELY TO MINIMIZE POTENTIAL ECOLOGICAL IMPACTS AND A TORONTO REGION CONSERVATION AUTHORITY ENFORCEMENT OFFICE SHOULD BE IMMEDIATELY CONTACTED. ADDITIONAL ESC MEASURES TO BE KEPT ON SITE AND USED AS NECESSARY.
- ALL ACTIVITIES, INCLUDING MAINTENANCE PROCEDURES, WILL BE CONTROLLED TO PREVENT THE ENTRY OF PETROLEUM PRODUCTS, DEBRIS, RUBBLE, CONCRETE OR OTHER DELETERIOUS SUBSTANCES INTO THE WATER. VEHICULAR REFUELING AND MAINTENANCE AND REFUELING WILL BE CONDUCTED A MINIMUM OF 30 M FROM THE WATER.
- ALL GRADES WITHIN THE REGULATORY FLOOD PLAN WILL BE MAINTAINED OR MATCHED.



SURVEY INFO.	BENCHMARK
KRCMAR 1137 CENTRE ST. THORNHILL, ON L4J 3M6 PHONE: (905) 738-0505 FAX: (905) 738-9221	ELEVATIONS SHOWN HEREON ARE MISSISSAUGA DATUM AND ARE RELATED TO CITY OF MISSISSAUGA BENCH MARK NO. 075033019 HAVING A PUBLISHED ELEVATION OF 167.744M.
SITE PLAN INFO.	LIST OF DRAWINGS
A8 ARCHITECTS 130 QUEENS QUAY EAST SUITE 1018 TORONTO, ON M5A 0P6 PHONE: (416) 466-0100	001 - NOTES AND DETAILS 002 - DETAILS AND SECTIONS 101 - SERVICING PLAN 401 - GRADING PLAN 601 - ESC PLAN

NO.	ISSUE	DATE	BY
2	ISSUED FOR SPA	07/20/23	LPM
1	ISSUED FOR REZONING APPLICATION	12/06/21	LPM



MISS B.U.L. CORP.
21-51 QUEEN ST. N.
MISSISSAUGA, ON

EROSION, SEDIMENTATION CONTROL AND CONSTRUCTION MANAGEMENT PLAN

PROJECT No.: 21-003
DRAWING: 601

P:\21-003 - 21-51 Queen St. - Mississauga\02-00 - Erosion and Sediment Control Drawings\01-003 - ESC.dwg (6/1)