

STRUCTURE:	DETAILS:	STANDARD:	TOP ELEV.:	INVERTS:
EX.MH51			TOP = 81.48	NW 79.74 # NE 79.83 SE 78.96 #
MHA	1200 mm MH	(R.S.D. 2-5-2, 2-5-3)	TOP = 81.78	NE 79.92 SW 80.15 NW 80.20
FLUGIA				SW 79.95

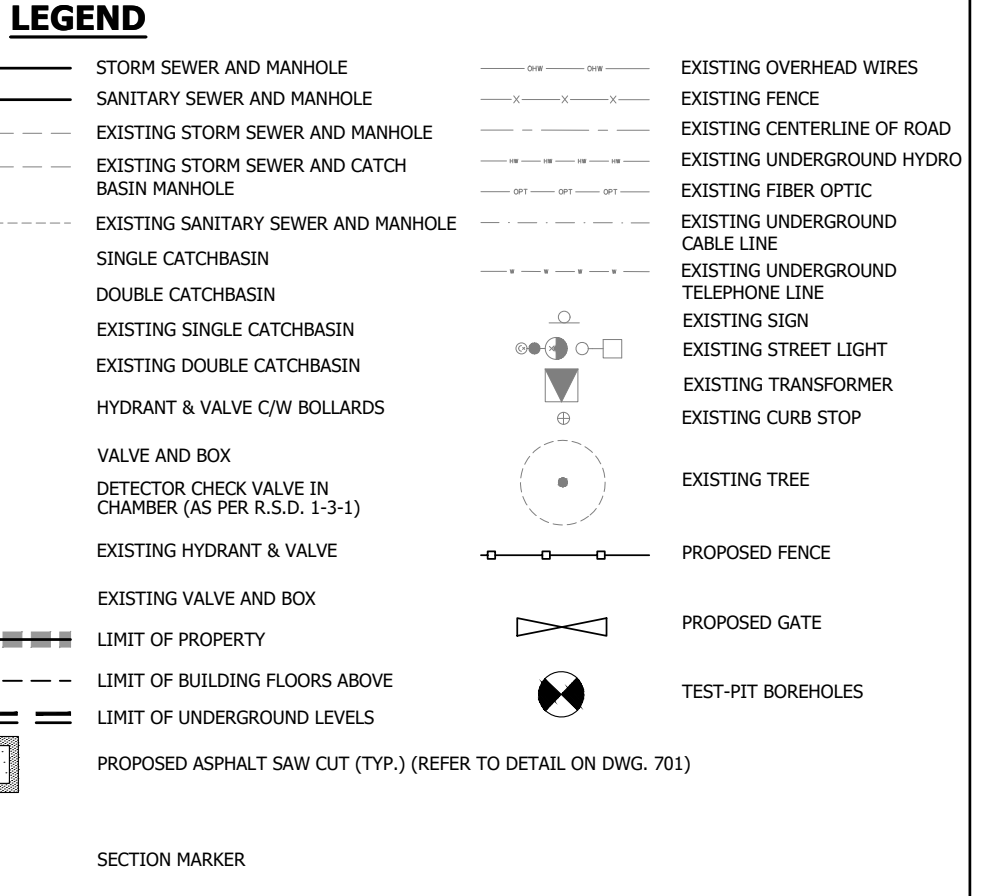
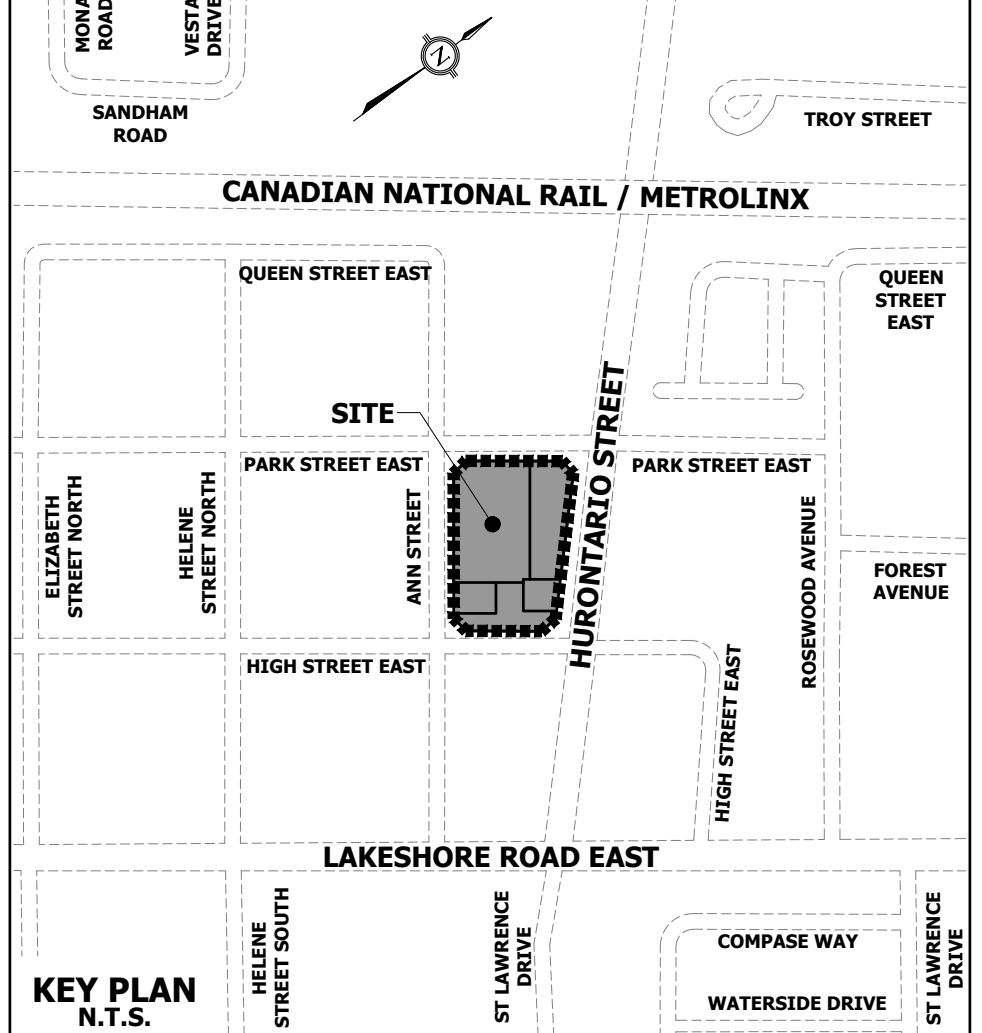
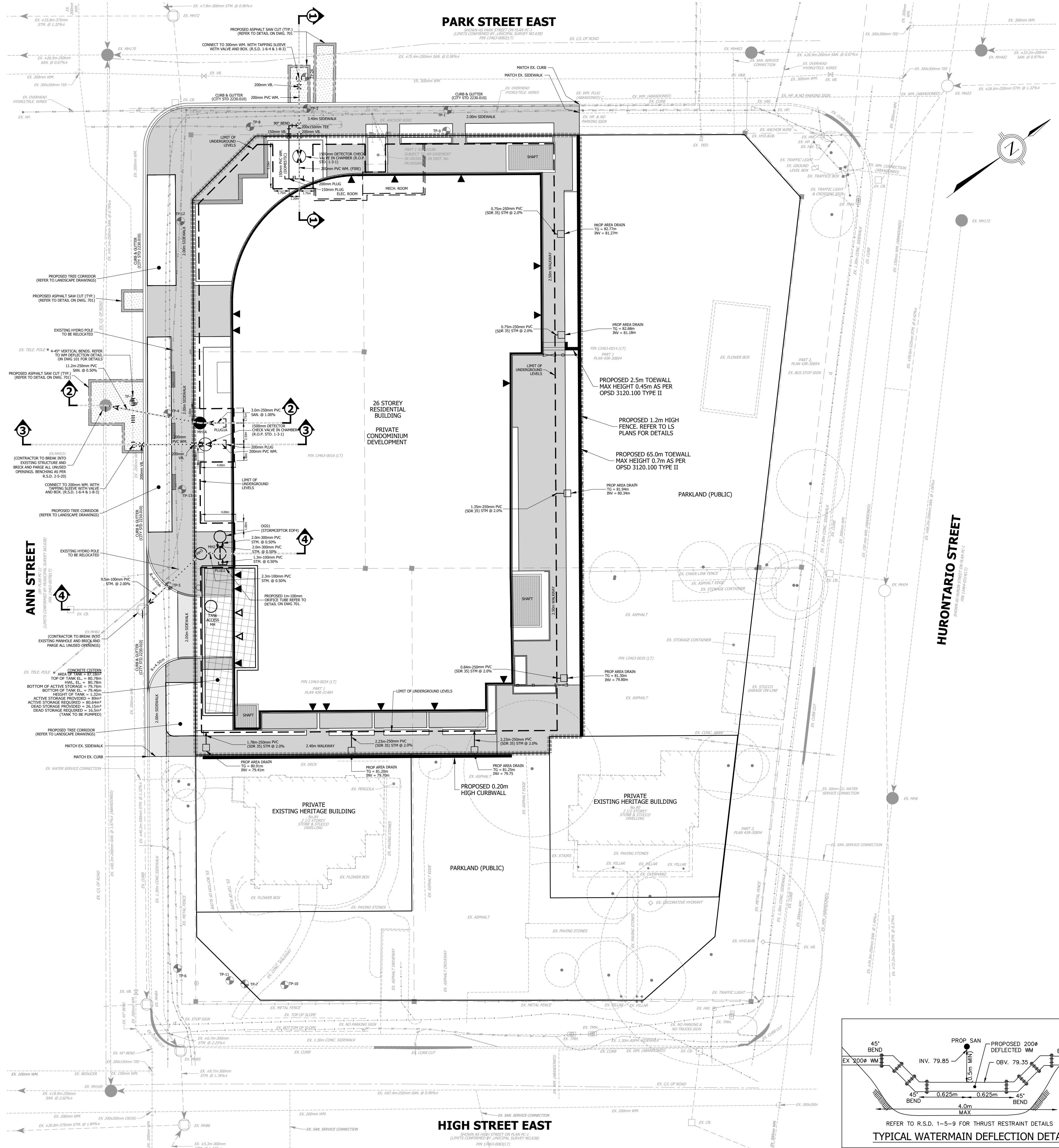
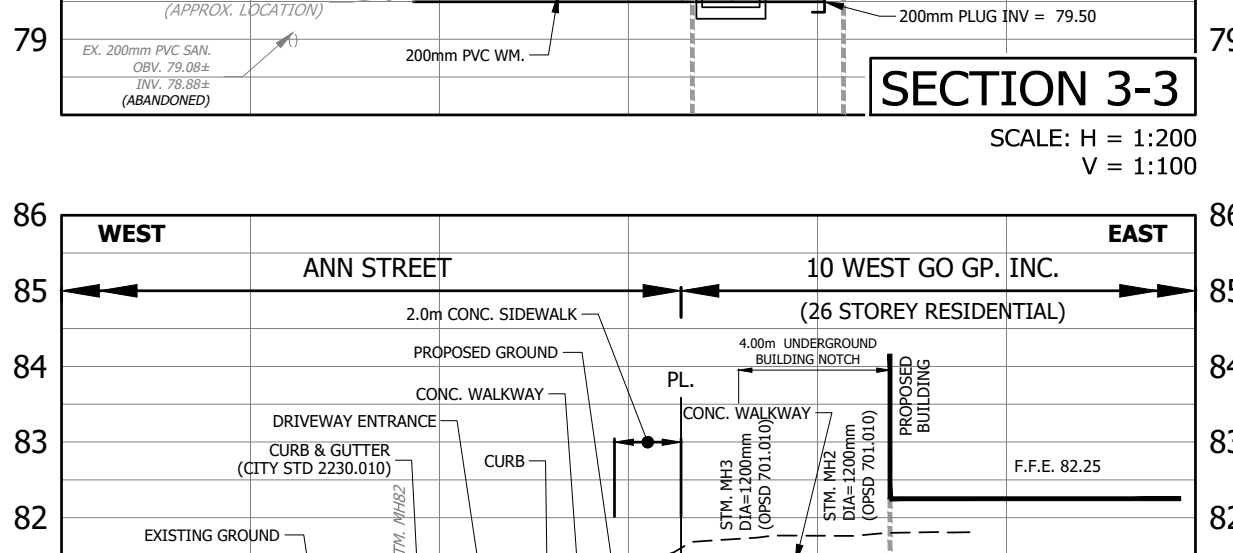
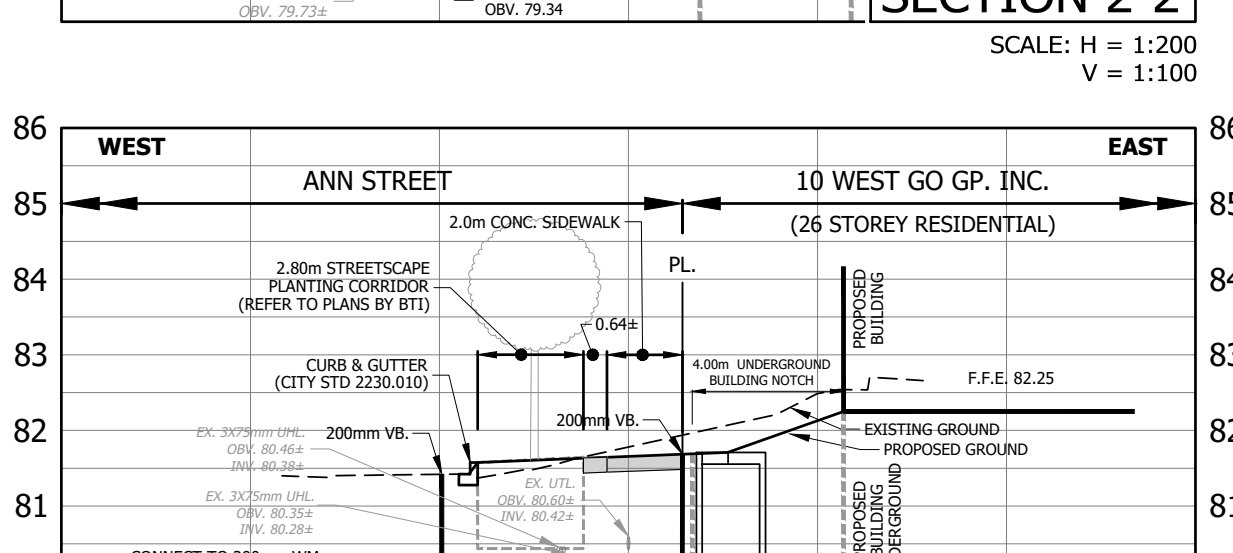
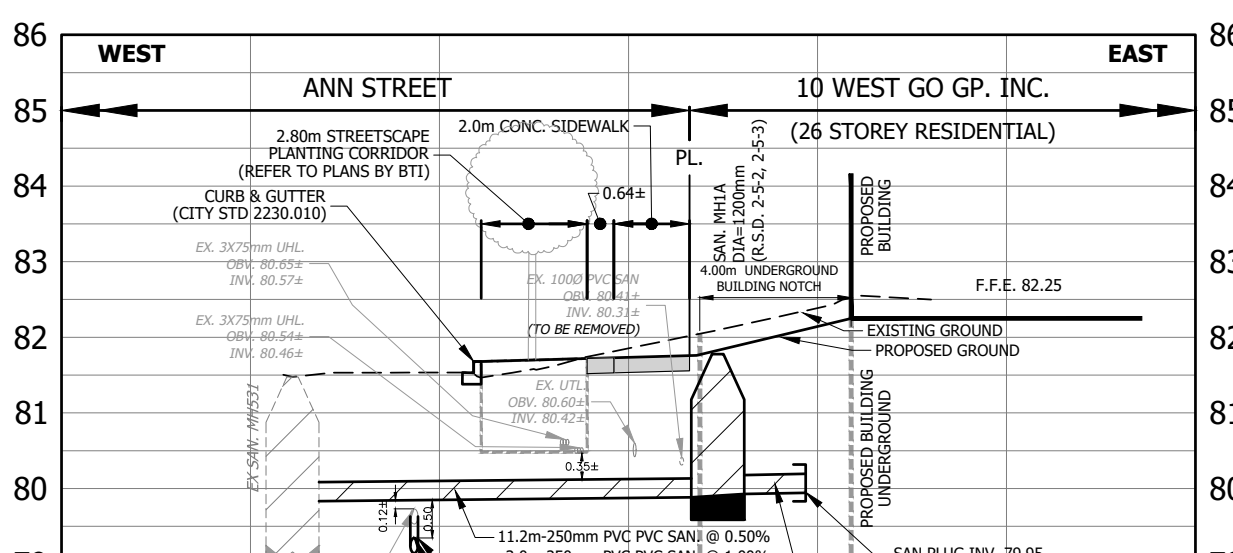
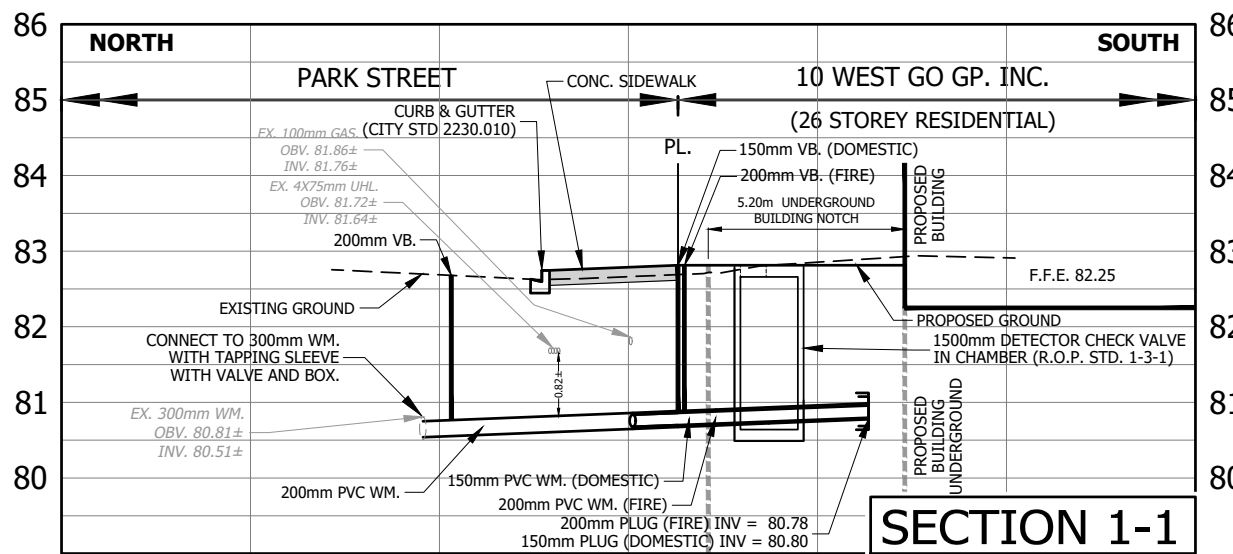
STRUCTURE:	DETAILS:	STANDARD:	TOP ELEV.:	INVERTS:
EX.MH2			TOP = 80.71	SE 79.40 # N 79.82
MH2	1200 mm MH	(OPSD 701.010)	TOP = 81.48	SE 80.33 SW 80.07 NW 80.15 NW 80.20
MH3	1200 mm MH	(OPSD 701.010)	TOP = 81.37	NE 80.06 S 80.03
CSS1	1200 mm MH	(OPSD 701.010)	TOP = 81.50	SE 80.16 SE 80.19
PLUG1				
TANK ACCESS MH			TOP = 81.16	NW 80.24

**EXISTING SANITARY STRUCTURE TABLE**

STRUCTURE:	INVERTS:
EX.MH1	NW 78.70a
EX.MH6	NW 78.96a SE 78.96a
EX.MH169	NE 77.56a SW 77.51a NW 77.62a
EX.MH170	NE 78.51a SE 79.42a NW 79.51a SW 79.39a
EX.MH171	SE 80.69a
EX.MH172	SE 79.65a
EX.MH173	SE 78.46a SW 78.42a NW 78.46a
EX.MH401	SW 80.41a
EX.MH402	NE 80.08a SW 79.97a NW 80.14a
EX.MH403	NE 79.95a SW 79.95a
EX.MH51	NW 79.74a SE 78.96a

**EXISTING STORM STRUCTURE TABLE**

STRUCTURE:	INVERTS:
EX.MH22	SW 78.62a
EX.MH23	NW 78.35a SE 78.35a NE 80.20a
EX.MH24	NW 78.10a SE 78.10a
EX.MH25	NW 78.83a SE 78.79a
EX.MH26	NW 78.55a
EX.MH27	SW 80.55a
EX.MH28	SE 81.38a
EX.MH29	NW 80.77a E 80.77a
EX.MH72	W 80.70a SW 80.62a
EX.MH2	SE 79.40a
EX.MH4	NW 78.79a E 78.79a
EX.MH5	W 78.64a SE 78.64a
EX.MH6	NW 78.49a SE 78.41a SW 77.50a
EX.MH9	NW 78.64a
EX.MH91	SE 78.49a NW 78.49a



**ELEVATION NOTE**  
ELEVATIONS SHOWN ON THIS PLAN ARE RELATED TO GEODETIC DATUM AND ARE DERIVED FROM THE CITY OF MISSISSAUGA BENCHMARKS:  
No. 732 ELEVATION=78.128m  
No. 731 ELEVATION=81.38m

**BENCHMARK NOTE**  
LBM1 SANITARY MANHOLE 0.696m FROM THE CENTER LINE OF THE ROAD AT THE INTERSECTION OF ANN STREET AND HIGH STREET.  
ELEVATION=80.36m  
LBM2 SANITARY MANHOLE 1.345m FROM THE CENTER LINE OF THE ROAD AT THE INTERSECTION OF PARK STREET AND HURONTARIO STREET.  
ELEVATION=82.51m

ISSUED FOR OPA & REZONING SUBMISSION	REVISED STREETScape	ISSUED FOR 3RD ZONING SUBMISSION	ISSUED FOR OPA & REZONING SUBMISSION
DATE OCT. 26, 2022	DATE MAR. 24, 2023	DATE APR. 19, 2023	DATE AUG. 02, 2023



**Urbantech Consulting**  
A Division of Leighton-Zec West Ltd.  
2030 Bristol Circle, Suite 105  
Oakville, ON L6H 0Z2  
TEL: 905.829.8818 • urbantech.com

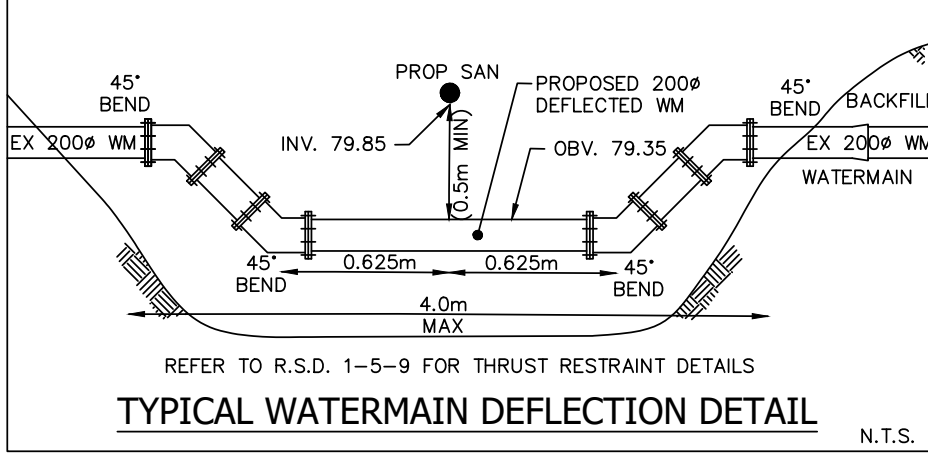
**10 WEST GO GP INC.**  
17 & 19 ANN STREET, 84 & 90 HIGH STREET  
OZ OPA 22-3

**Region of Peel**  
working with you

**MISSISSAUGA**

**SERVICING PLAN**

REGION FILE No. XXX	CITY FILE No. XXX
SCALE: 1:250	AREA Z-08-C5/D
DRAWN BY: A.G.	CHECKED BY: R.M./R.B.T.M
DATE: APRIL 2023	PLAN No. 101
DATE: APRIL 2023	SHEET OF C-



PLOT DATE: August 23, 2023 8:42:59 AM