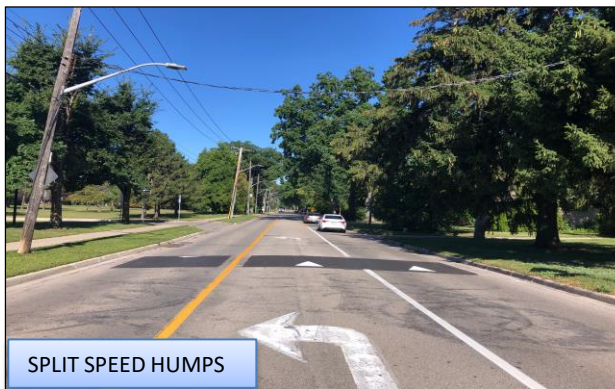
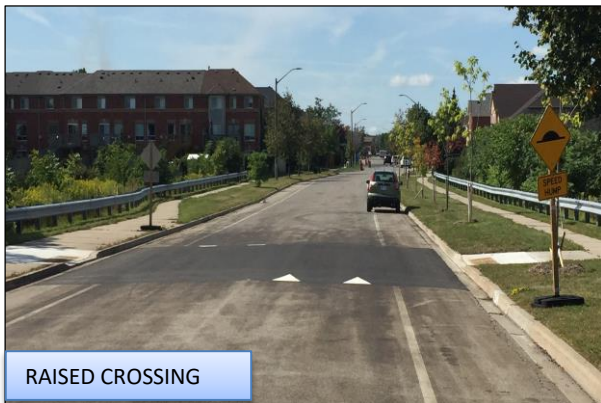
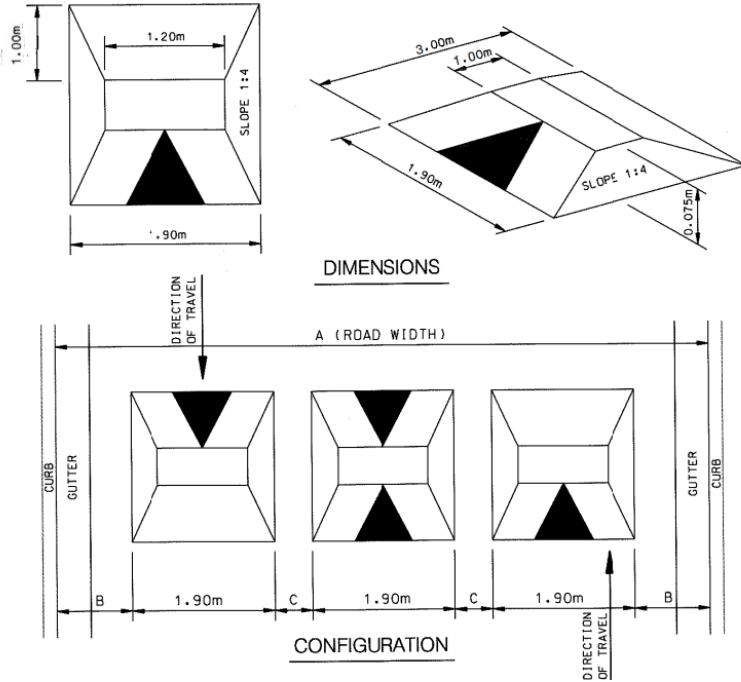


TRAFFIC CALMING DEVICES



SPEED CUSHION DESIGN



- Raised area on a roadway that does not cover the entire width of the road
- Designed to accommodate wide wheel base of emergency vehicles (easy passage)
- Designed to discourage drivers from travelling at excessive speeds
- A series of speed cushions is more effective than a single installation
- Use on neighbourhood roads

Wilcox Road

Between Meadows Boulevard and Burnhamthorpe Road East



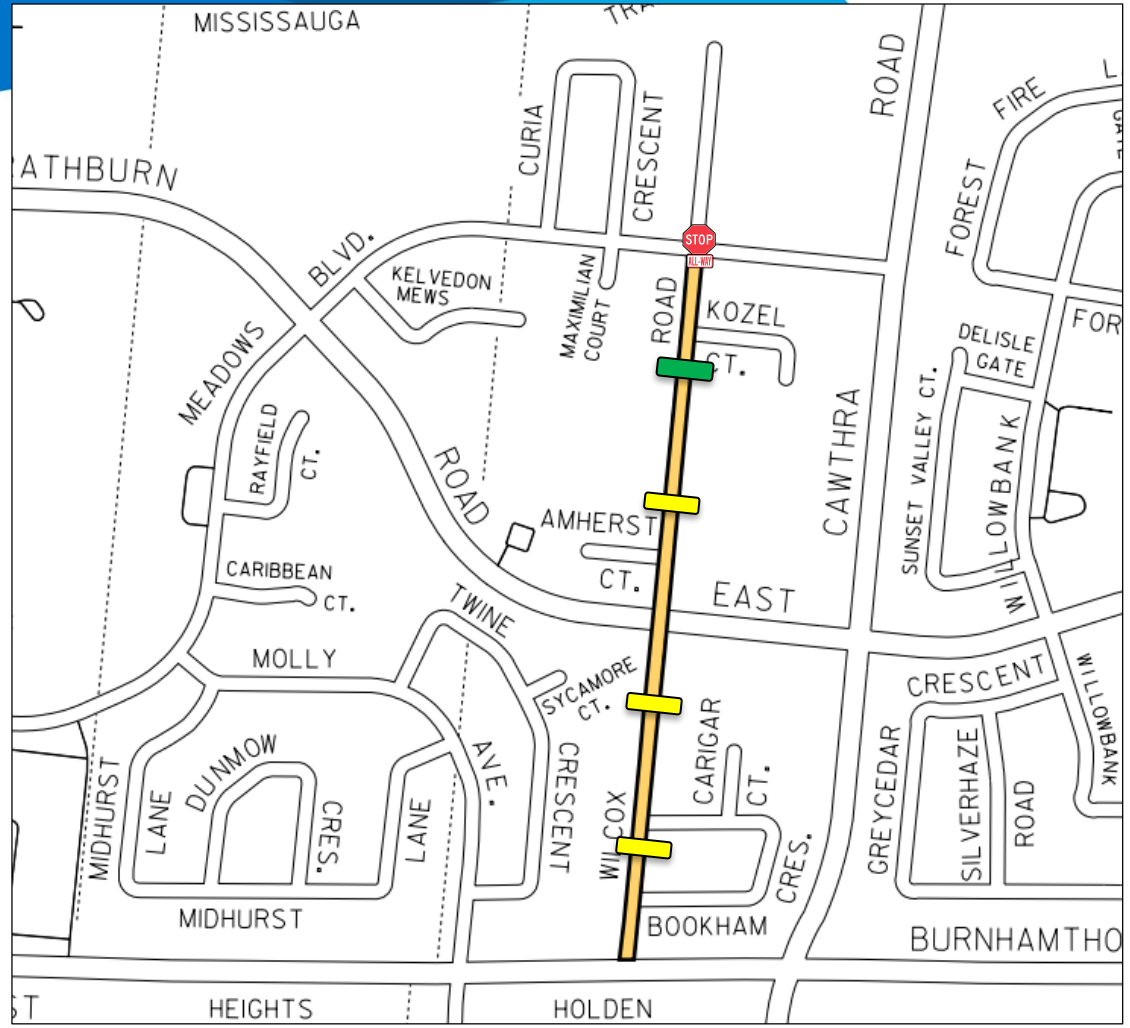
Existing All-Way
Stop Location



Proposed Speed
Cushion Locations



Proposed Raised
Crossing Location



Wilcox Road

Between Meadows Boulevard and Rathburn Road East



Existing All-Way
Stop Location



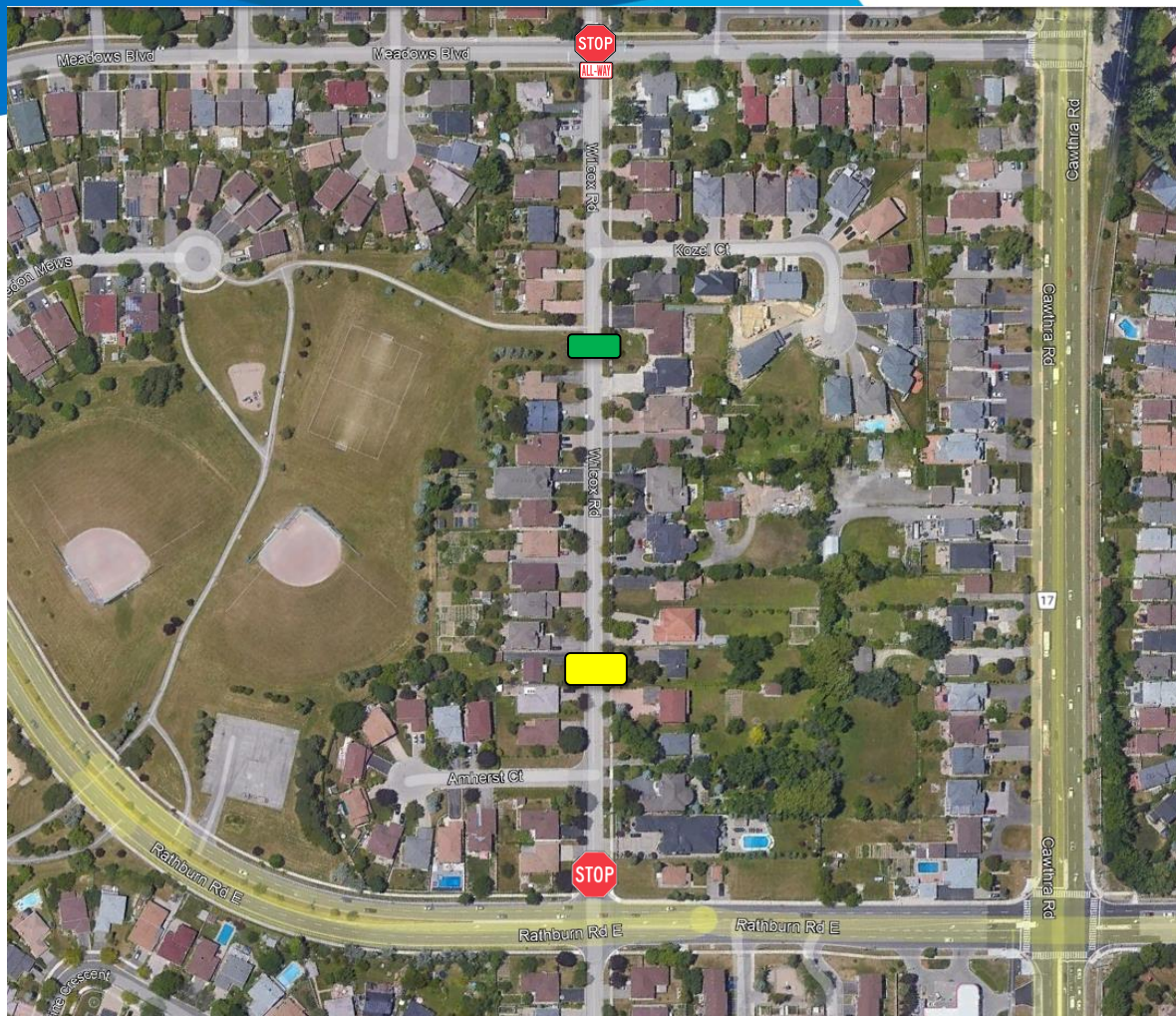
Existing Stop Location



Proposed Speed
Cushion Locations



Proposed Raised
Crossing Location



Wilcox Road

Between Rathburn Road East and
Burnhamthorpe Road East



Existing Stop Location



Proposed Speed
Cushion Locations

