



STRYBOS BARRON KING  
LANDSCAPE ARCHITECTURE

PARTNERS

BRYN BARRON, OALA, CSLA, ISA  
ALISTAIR JOHNSTON, LOHTA, ISA, ASCA  
MATHIEU STRYBOS, OALA, CSLA  
SALVATORE VIOLA, OALA, CSLA  
MATTHEW REGIMBAL, LOHTA, ISA  
JOSHUA BEITZ, OALA, CSLA, ISA

ASSOCIATES

## ARBORIST REPORT

**PROPOSED RESIDENTIAL DEVELOPMENT  
904 MISSISSAUGA HEIGHTS DRIVE  
CITY OF MISSISSAUGA**

**PREPARED FOR:  
INVESTEX HOLDINGS LIMITED  
C/O MARIO POLLA**

**PREPARED BY:  
STRYBOS BARRON KING LTD.  
5770 HURONTARIO STREET  
SUITE 320  
MISSISSAUGA, ONTARIO  
L5R 3G5**

**ISA CERTIFIED ARBORIST  
MATTHEW GEHRES  
ISA# ON-1114A  
OUR PROJECT NO:  
5906**

**JUNE 12, 2023**

STRYBOS BARRON KING LTD.

5770 HURONTARIO STREET, SUITE 320, MISSISSAUGA, ONTARIO L5R 3G5 T: 416.695.4949 F: 905.712.3101 WWW.STRYBOS.COM

## **TABLE OF CONTENTS**

<b>Introduction</b>	<b>1</b>
<b>Site Context</b>	<b>1</b>
<b>Plans Utilized</b>	<b>1</b>
<b>Tree Inventory</b>	<b>1</b>
<b>Table 1 – Tree Inventory Descriptions</b>	<b>1</b>
<b>Tree Inventory List</b>	<b>2</b>
<b>Observations</b>	<b>6</b>
<b>Tree Preservation</b>	<b>6</b>
<b>Table 2- Tree Protection Zones</b>	<b>7</b>
<b>Private Tree Bylaw</b>	<b>7</b>
<b>Table 3 – Tree Categories</b>	<b>7</b>
<b>Tree Removals</b>	<b>7</b>
<b>Table 4 – Tree Removals Subject to Private Tree Bylaw</b>	<b>8</b>
<b>Tree Protection</b>	<b>11</b>
<b>Tree Compensation Requirements</b>	<b>11</b>
<b>Table 5 – Tree Compensation List</b>	<b>12</b>
<b>Tree Preservation Recommendations</b>	<b>14</b>
<b>Pre-Construction</b>	<b>14</b>
<b>During Construction</b>	<b>14</b>
<b>Post Construction</b>	<b>14</b>
<b>Conclusion</b>	<b>15</b>
<b>Appendix A – Site Photographs</b>	<b>16</b>
<b>Appendix B – Contextual Tree Preservation &amp; Removal Plan</b>	<b>18</b>
<b>Appendix C – Tree Protection Hoarding Detail</b>	<b>19</b>

**ARBORIST REPORT  
PROPOSED RESIDENTIAL DEVELOPMENT  
904 MISSISSAUGA HEIGHTS DRIVE, MISSISSAUGA, ONTARIO**

**Introduction**

Strybos Barron King Ltd. was retained by Investex Holdings Limited, c/o Mario Polla to prepare an Arborist Report for the subject property in accordance with the City of Mississauga Tree Bylaw requirements. The proposal for this property is to construct a new residential development which includes the adjacent lot at 900 Mississauga Heights. The development will see the retention of the existing dwellings at 900 & 904 Mississauga Heights and the addition of a shared common element condo road and 16 new single family lots.

**Site Context**

The subject property (904 Mississauga Heights Drive) is located southeast of Queensway W and Mississauga Heights Drive. The site currently contains an existing two storey residential dwelling.

**Plans Utilized**

A topographic plan prepared by David B Searles Limited, an architectural site plan prepared by GSAI and an Engineering Plan prepared by Skira and Associates were used to determine the location of the existing trees in relation to the proposed new residential development.

**Tree Inventory**

Trees were identified by an ISA Certified Arborist both within and immediately adjacent to the subject property on May 3, 2023 . The trees are described in terms of species and diameter at breast height (DBH – measured at 1.4m from grade). They have been assessed in terms of their general health from poor to good; **GOOD** – trees in good overall health and condition with desirable structure, **FAIR** – trees in moderate health and condition with less desirable structure, and **POOR** – trees displaying prominent health issues such as decay and disease and/or poor form and structure. (Refer to *Tree Preservation & Removal Plan* for locations of specific trees.)

**Table 1 - Tree Inventory Descriptions**

<b>Key#</b>	This number refers to the inventory number for the tree/grouping.
<b>Species</b>	The common names are provided for each tree.
<b>DBH</b>	This refers to Diameter (in centimetres) at Breast Height and is measured at 1.4m above the ground for each tree.
<b>Crown</b>	Estimated diameter of tree canopy (in metres), measured from dripline to dripline (varies in most cases considering the nature of tree groupings)
<b>Health</b>	An assessment of the general health and vigour of the tree, derived partly through a comparison of deadwood and live growth relative to a 100% healthy tree. The size and colour of foliage are also considered in this category. During the leaf-off season, the amount and distribution of buds is an important determinant of canopy vitality. This indicator is also measured on an ascending scale of poor-fair good.
<b>Structure</b>	A term describing key distinguishing structural character or defect.

**ARBORIST REPORT  
PROPOSED RESIDENTIAL DEVELOPMENT  
904 MISSISSAUGA HEIGHTS DRIVE, MISSISSAUGA, ONTARIO**

EXISTING TREE INVENTORY									
KEY	SPECIES	DBH	CROWN	HEALTH	STRUCTURE	COMMENTS	PRESERVATION	MIN. TPZ	KEY
		(centimetres)	(metres)	G/F/P			DIRECTION	(metres)	
001	Scots Pine	29	3	Dead			REMOVE	1.8	001
002	Scots Pine	33	4	Dead		Hazard	REMOVE	2.4	002
003	White Ash	22	1	Dead		Failed	REMOVE	1.8	003
004	Scots Pine	36	5	Fair	One-sided	Crowded by adjacent tree, Broken branches, Minor deadwood, Elevated canopy, Thin	REMOVE	2.8	004
005	Norway Spruce	70	8	Fair	Pyramidal	Crowded by adjacent tree, Broken branches, Elevated branching, Exposed roots	REMOVE	4.8	005
006	Shagbark Hickory	24	5	Fair	Irregular	Crowded by adjacent tree	REMOVE	1.8	006
007	Sugar Maple	18	6	Fair	Irregular	Crowded by adjacent tree	REMOVE	1.8	007
008	Scots Pine	58	8	Fair	Pyramidal	Crowded by adjacent tree, Elevated branching, Exposed roots	REMOVE	3.6	008
009	Norway Maple	20	6	Fair	One-sided	Crowded by adjacent tree, Leaning	REMOVE	1.8	009
010	Scots Pine	50	8	Fair	Pyramidal	Crowded by adjacent tree, Broken branches, Exposed roots	REMOVE	3.0	010
010.1	Norway Maple	10	2	Fair	Irregular	Crowded by adjacent tree	PRESERVE	1.8	010.1
011	Northern Red Oak	41,43	8	Fair	Multi-Stem	Crowded by adjacent tree, Broken branches, Elevated canopy	REMOVE	3.0	011
012	Northern Red Oak	46,49	12	Fair	Multi-Stem	Crowded by adjacent tree, Broken branches	REMOVE	3.0	012
013	Sugar Maple	16	6	Fair	One-sided	Crowded by adjacent tree, Leaning	REMOVE	1.8	013
014	Norway Spruce	17	8	Fair	Pyramidal	Crowded by adjacent tree, Broken branches, Elevated canopy	REMOVE	1.8	014
015	Norway Spruce	28	8	Fair	One-sided	Crowded by adjacent tree, Broken branches, Elevated canopy	REMOVE	1.8	015
016	Norway Spruce	78	1	Dead			REMOVE		016
017	Norway Spruce	22	2	Dead			REMOVE		017
018	Norway Maple	19	10	Fair	Leaning	Crowded by adjacent tree, Leaning on tree #865	REMOVE	1.8	018
019	White Pine	27	10	Fair	Irregular	Crowded by adjacent tree, Broken branches, Major deadwood	REMOVE	1.8	019
020	Norway Maple	25	8	Fair	One-sided	Crowded by adjacent tree, Broken branches, Minor deadwood	REMOVE	1.8	020
021	Norway Maple	22	5	Fair	One-sided	Crowded by adjacent tree, Broken branches, Minor deadwood	REMOVE	1.8	021
022	Shagbark Hickory	29	7	Poor	Irregular	Crowded by adjacent tree, Broken branches, Minor deadwood	REMOVE	4.8	022
023	Norway Spruce	49	5	Poor	Pyramidal	Crowded by adjacent tree, Broken branches, Minor deadwood	REMOVE	3.0	023
024	Shagbark Hickory	56	10	Poor	Irregular	Crowded by adjacent tree, Broken branches, Minor deadwood	REMOVE	3.6	024
025	Sugar Maple	44	12	Fair	Irregular	Crowded by adjacent tree, Broken branches, Minor deadwood	REMOVE	3.0	025
026	Norway Spruce	55	10	Dead			PRESERVE	1.8	026
027	Norway Spruce	20	10	Poor	Pyramidal	Crowded by adjacent tree, Broken branches, Elevated canopy	PRESERVE	1.8	027
028	Northern Red Oak	23	8	Poor	Irregular	Crowded by adjacent tree, Broken branches, Minor deadwood	PRESERVE	1.8	028
029	Eastern White Pine	71	10	Fair	Pyramidal	Crowded by adjacent tree, Broken branches, Elevated canopy	PRESERVE	4.8	029
030	Paper Birch	35	2	Fair	Irregular	Crowded by adjacent tree, Broken branches, Minor deadwood, leaning	PRESERVE	2.4	030
031	Paper Birch	24,35	11	Fair	Irregular	Crowded by adjacent tree, Broken branches, Minor deadwood, leaning	PRESERVE	2.5	031
032	Northern Red Oak	70	10	Fair	Irregular	Crowded by adjacent tree, Broken branches, Minor deadwood	PRESERVE	1.8	032
033	Northern Red Oak	21	8	Fair	Irregular	Crowded by adjacent tree, Broken branches, Minor deadwood	PRESERVE	1.8	033
037	Norway Maple	18.0	10.0	Good	One-sided	Crowding by adjacent tree	PRESERVE	1.8	037
038	Norway Maple	29	8	Fair	One-sided	Crowded by adjacent tree, Broken branches, Minor deadwood	PRESERVE	1.8	038
039	Bur Oak	32	8	Fair	One-sided	Crowded by adjacent tree, Broken branches, Minor deadwood	PRESERVE	2.4	039
040	Norway Maple	25	12	Fair	Irregular	Crowded by adjacent tree, Broken branches, Minor deadwood	PRESERVE	1.8	040
041	Norway Maple	24	6	Fair	Irregular	Crowded by adjacent tree, Broken branches, Minor deadwood	PRESERVE	1.8	041
042	Norway Maple	60	10	Fair	Irregular	Crowded by adjacent tree, Broken branches, Minor deadwood	PRESERVE	3.6	042
043	Norway Maple	39	8	Fair	Irregular	Crowded by adjacent tree, Broken branches, Minor deadwood	PRESERVE	2.4	043
044	Norway Maple	33	6	Fair	Irregular	Crowded by adjacent tree, Broken branches, Minor deadwood	PRESERVE	2.4	044
045	Norway Spruce	28	8	Fair	Irregular	Crowded by adjacent tree, Broken branches, Minor deadwood	PRESERVE	1.8	045
046	Norway Maple	31	10	Fair	Irregular	Crowded by adjacent tree, Broken branches, Minor deadwood	PRESERVE	2.4	046
047	Norway Maple	64	18	Fair	Irregular	Crowded by adjacent tree, Broken branches, Minor deadwood	PRESERVE	4.2	047
048	Norway Maple	49	7	Fair	Irregular	Crowded by adjacent tree, Broken branches, Minor deadwood	PRESERVE	3.0	048
049	Norway Maple	31	6	Fair	One-sided	Crowded by adjacent tree, Broken branches, Minor deadwood	PRESERVE	2.4	049
050	Paper Birch	62	8	Fair	One-sided	Crowded by adjacent tree, Broken branches, Minor deadwood	PRESERVE	4.2	050
051	Norway Maple	38	13	Good	Irregular	Crowded by adjacent tree, Broken branches, Minor deadwood, Vine entangled	PRESERVE	2.4	051
052	Scots Pine	41	7	Poor	Pyramidal	Crowded by adjacent tree, Broken branches, Elevated canopy	REMOVE	3.0	052
053	Eastern White Pine	19	8	Fair	Pyramidal	Crowded by adjacent tree, Broken branches, Elevated canopy	REMOVE	1.8	053
054	Black Locust	51	4	Fair	Irregular	Crowded by adjacent tree, Broken branches, Minor deadwood	REMOVE	3.6	054
055	Eastern White Pine	60	7	Fair	Pyramidal	Crowded by adjacent tree, Broken branches, Elevated canopy	REMOVE	3.6	055
236	Red Oak	51.0	8.0	Good	Irregular form	Crowded by adjacent trees, minor deadwood	REMOVE	3.6	236
244	Paper Birch	24,5-30	8.0	Poor	Multi-Stem	Cluster of three stems branching from grade, some crown dieback throughout	REMOVE	2.4	244
321	Shagbark Hickory	67	9	Fair	Irregular	Crowded by adjacent tree, Broken branches, Minor deadwood	REMOVE	4.2	321
328	White Spruce	54	4	Dead			REMOVE		328
329	Hawthorn Species	25	5	Fair	Irregular	Crowded by adjacent tree, Broken branches, Minor deadwood	REMOVE	1.8	329
334	Norway Maple	19	3	Fair	Irregular	Crowded by adjacent tree, Broken Branches, Minor Deadwood	REMOVE	1.8	334
335	Black Cherry	68	10	Fair	Irregular	Crowded by adjacent tree, Broken Branches, Minor Deadwood	REMOVE	4.2	335
338	Blue Spruce	17	4	Fair	Pyramidal	Crowded by adjacent tree, Broken branches, Elevated canopy	REMOVE	1.8	338
339	Beech	26	6	Fair	Irregular	Crowded by adjacent tree, Broken Branches, Basal decay	REMOVE	1.8	339
401	Freemania Maple	48	8	Fair	Irregular	Crowded by adjacent tree, Broken Branches, Minor Deadwood	PRESERVE	3.0	401
402	Eastern White Pine	38	6	Fair	Pyramidal	Crowded by adjacent tree, Broken branches, Elevated canopy	PRESERVE	2.4	402
403	Northern Red Oak	70	11	Fair	Irregular	Crowded by adjacent tree, Broken Branches, Minor Deadwood	PRESERVE	4.2	403
404	Weeping Birch	44	7	Fair	Irregular	Crowded by adjacent tree, Broken Branches, Minor Deadwood	PRESERVE	3.0	404
405	Eastern White Pine	72	6	Fair	Pyramidal	Crowded by adjacent tree, Broken branches, Elevated canopy	PRESERVE	4.8	405

**ARBORIST REPORT  
PROPOSED RESIDENTIAL DEVELOPMENT  
904 MISSISSAUGA HEIGHTS DRIVE, MISSISSAUGA, ONTARIO**

EXISTING TREE INVENTORY									
KEY	SPECIES	DBH	CROWN	HEALTH	STRUCTURE	COMMENTS	PRESERVATION	MIN. TPZ	KEY
		(centimetres)	(metres)	G/F/P	DIRECTION		(metres)		
406	Norway Maple	77	11	Fair	Irregular	Crowded by adjacent tree, Broken Branches, Minor Deadwood	PRESERVE	4.8	406
407	American Basswood	42	3	Fair	One-sided	Crowded by adjacent tree, Broken Branches, Minor Deadwood	REMOVE	3.0	407
408	Norway Maple	42	8	Fair	Irregular	Crowded by adjacent tree, Broken Branches, Minor Deadwood	REMOVE	3.0	408
409	Norway Maple	19	5	Fair	One-sided	Crowded by adjacent tree, Broken Branches, Minor Deadwood	REMOVE	1.8	409
410	Norway Maple	32	8	Fair	One-sided	Crowded by adjacent tree, Broken Branches, Minor Deadwood	REMOVE	2.4	410
411	Scots Pine	31	0	Dead		Failed	REMOVE		411
412	Scots Pine	25	2	Fair	Pyramidal	Crowded by adjacent tree, Broken branches, Elevated canopy, Declining	REMOVE	1.8	412
413	Eastern White Pine	26	3	Fair	Pyramidal	Crowded by adjacent tree, Broken branches, Major deadwood	REMOVE	1.8	413
414	Norway Spruce	49	8	Fair	Pyramidal	Crowded by adjacent tree, Broken branches, Elevated canopy	REMOVE	3.0	414
415	Norway Maple	36	10	Fair	Irregular	Crowded by adjacent tree, Broken Branches, Minor Deadwood, Epicormic growth	REMOVE	2.4	415
416	Norway Maple	25	5	Fair	Irregular	Crowded by adjacent tree, Broken Branches, Minor Deadwood	REMOVE	1.8	416
417	Northern Red Oak	41	10	Fair	Irregular	Crowded by adjacent tree, Double Leader	REMOVE	3.0	417
418	Northern Red Oak	25	6	Fair	One-sided	Crowded by adjacent tree, Broken Branches, Minor Deadwood	REMOVE	1.8	418
419	Large-toothed Aspen	44	8	Fair	Irregular	Crowded by adjacent tree, Broken Branches, Minor Deadwood	REMOVE	3.0	419
420	Norway Maple	26	10	Fair	One-sided	Crowded by adjacent tree, Broken Branches, Minor Deadwood	REMOVE	1.8	420
421	Northern Red Oak	36	8	Fair	Irregular	Crowded by adjacent tree, Broken Branches, Minor Deadwood	REMOVE	2.4	421
422	Blue Spruce	28	5	Dead			REMOVE		422
423	Norway Spruce	62	13	Fair	Pyramidal	Crowded by adjacent tree, Minor Deadwood, Elevated Canopy	REMOVE	4.2	423
424	Norway Spruce	38	10	Dead			REMOVE		424
427	Eastern White Pine	49	8	Dead			REMOVE		427
428	Norway Spruce	50	6	Fair	Pyramidal	Crowded by adjacent tree, Broken Branches, Minor Deadwood, Elevated Canopy	REMOVE	3.0	428
429	Norway Maple	68	15	Fair	Irregular	Crowded by adjacent tree, Broken Branches, Minor Deadwood, Dead Tree Falling into Tree	REMOVE	4.2	429
430	Eastern White Pine	56	10	Fair	Pyramidal	Crowded by adjacent tree, Broken Branches, Minor Deadwood, Elevated Canopy	REMOVE	3.6	430
432	Eastern White Pine	53	8	Fair	Pyramidal	Crowded by adjacent tree, Broken Branches, Minor Deadwood, Elevated Canopy	REMOVE	3.6	432
433	Red Maple	37,56	10	Fair	Multi-Stem	Crowded by adjacent tree, Broken Branches, Minor Deadwood	REMOVE	3.6	433
434	Spruce Species	42	0	Fair	Pyramidal	Crowded by adjacent tree, Broken Branches, Minor Deadwood, Elevated Canopy	REMOVE	3.0	434
435	Black Cherry	40	10	Fair	Irregular	Crowded by adjacent tree, Broken Branches, Minor Deadwood	REMOVE	3.0	435
436	Norway Spruce	44	8	Fair	Pyramidal	Crowded by adjacent tree, Broken Branches, Minor Deadwood, Elevated Canopy	REMOVE	3.0	436
437	Eastern White Pine	43	5	Fair	Pyramidal	Crowded by adjacent tree, Broken Branches, Minor Deadwood, Elevated Canopy	REMOVE	3.0	437
438	Black Cherry	40	8	Fair	Irregular	Crowded by adjacent tree, Broken Branches, Minor Deadwood	REMOVE	3.0	438
439	Northern Red Oak	28	6	Fair	Irregular	Crowded by adjacent tree, Broken Branches, Minor Deadwood	REMOVE	1.8	439
440	Norway Maple	25	6	Fair	Irregular	Crowded by adjacent tree, Broken Branches, Minor Deadwood	REMOVE	1.8	440
441	Scots Pine	39	8	Fair	Pyramidal	Crowded by adjacent tree, Broken Branches, Minor Deadwood, Elevated Canopy	REMOVE	2.4	441
442	Scots Pine	28	4	Fair	Pyramidal	Crowded by adjacent tree, Broken Branches, Minor Deadwood, Elevated Canopy	REMOVE	1.8	442
443	Eastern White Pine	48	8	Fair	Pyramidal	Crowded by adjacent tree, Broken Branches, Minor Deadwood, Elevated Canopy	REMOVE	3.0	443
444	Eastern White Pine	32,73	10	Fair	Multi-Stem	Crowded by adjacent tree, Broken Branches, Minor Deadwood, Elevated Canopy	REMOVE	4.8	444
445	Eastern White Pine	55	10	Fair	Pyramidal	Crowded by adjacent tree, Broken Branches, Vine entangled, Elevated Canopy	REMOVE	3.6	445
446	Eastern White Pine	54	8	Fair	Pyramidal	Crowded by adjacent tree, Broken Branches, Minor Deadwood, Elevated Canopy	REMOVE	3.6	446
447	Ash Species	49	0	Dead			REMOVE	3.0	447
448	Eastern White Pine	43	0	Dead			REMOVE		448
449	Northern Red Oak	61	8	Fair	Irregular	Crowded by adjacent tree, Broken Branches, Minor Deadwood	REMOVE	4.2	449
450	Norway Maple	57	10	Fair	Irregular	Crowded by adjacent tree, Broken Branches, Minor Deadwood	PRESERVE	3.6	450
451	Black Walnut	54	8	Fair	Irregular	Crowded by adjacent tree, Broken Branches, Minor Deadwood	REMOVE	3.6	451
452	Norway Maple	57	7	Fair	Irregular	Crowded by adjacent tree, Broken Branches, %50 dead	REMOVE	3.6	452
453	Norway Maple	54	15	Fair	Irregular	Crowded by adjacent tree, Broken Branches, Minor Deadwood	REMOVE	3.6	453
454	Northern Red Oak	55,60	15	Fair	Multi-Stem	Crowded by adjacent tree, Broken Branches, Minor Deadwood	REMOVE	3.6	454
455	Norway Maple	23	8	Fair	Irregular	Crowded by adjacent tree, Broken Branches, Minor Deadwood	REMOVE	1.8	455
456	Norway Maple	18	3	Fair	Irregular	Crowded by adjacent tree, Broken Branches, Minor Deadwood	REMOVE	1.8	456
457	Norway Maple	23	5	Fair	Irregular	Crowded by adjacent tree, Broken Branches, Minor Deadwood	REMOVE	1.8	457
458	Norway Maple	22	4	Fair	Irregular	Crowded by adjacent tree, Broken Branches, Minor Deadwood	REMOVE	1.8	458
459	Norway Maple	31	8	Fair	Irregular	Crowded by adjacent tree, Broken Branches, Minor Deadwood	PRESERVE	2.4	459
460	Pine Species	36	0	Dead	Pyramidal		REMOVE	2.4	460
461	Black Cherry	23	6	Fair	Irregular	Crowded by adjacent tree, Broken Branches, Minor Deadwood	PRESERVE	1.8	461
462	Norway Maple	17	3	Fair	Irregular	Crowded by adjacent tree, Broken Branches, Minor Deadwood	PRESERVE	1.8	462
339	Beech	26	3	Fair	Irregular	Crowded by adjacent tree, Broken Branches, Minor Deadwood	REMOVE	1.8	339
464	Norway Maple	21	5	Fair	Irregular	Crowded by adjacent tree, Broken Branches, Minor Deadwood	REMOVE	1.8	464
465	Eastern White Pine	48	7	Fair	Pyramidal		PRESERVE	3.0	465
466	Norway Maple	20	5	Fair	Irregular	Crowded by adjacent tree, Broken Branches, Minor Deadwood	PRESERVE	1.8	466
467	Norway Maple	20	6	Fair	Irregular	Crowded by adjacent tree, Broken Branches, Minor Deadwood	REMOVE	1.8	467

**ARBORIST REPORT**  
**PROPOSED RESIDENTIAL DEVELOPMENT**  
**904 MISSISSAUGA HEIGHTS DRIVE, MISSISSAUGA, ONTARIO**

EXISTING TREE INVENTORY									
KEY	SPECIES	DBH	CROWN	HEALTH	STRUCTURE	COMMENTS	PRESERVATION	MIN. TPZ	KEY
		(centimetres)	(metres)	G/F/P			DIRECTION	(metres)	
468	Black Locust	37	5	Fair	Irregular	Crowded by adjacent tree, Broken Branches, Minor Deadwood	REMOVE	2.4	468
469	Black Cherry	23	1	Dead			REMOVE	1.8	469
470	Black Locust	36	5	Fair	Irregular	Crowded by adjacent tree, Broken Branches, Minor Deadwood	REMOVE	2.4	470
471	Black Locust	54	8	Fair	Irregular	Crowded by adjacent tree, Broken Branches, Minor Deadwood	REMOVE	3.6	471
472	Green Ash	16	5	Dead		Failed	PRESERVE	1.8	472
473	Green Ash	15	4	Fair	Irregular	Crowded by adjacent tree, Broken Branches, Minor Deadwood	REMOVE	1.8	473
475	Eastern White Pine	58	10	Fair	Pyramidal	Crowded by adjacent tree, Broken Branches, Minor Deadwood, Elevated Canopy	PRESERVE	3.6	475
476	Eastern White Pine	48	10	Fair	Pyramidal	Crowded by adjacent tree, Broken Branches, Minor Deadwood, Elevated Canopy	PRESERVE	3.0	476
477	Eastern White Pine	49	10	Fair	Pyramidal	Crowded by adjacent tree, Broken Branches, Minor Deadwood, Elevated Canopy	PRESERVE	3.0	477
478	Norway Maple	17	6	Fair	Irregular	Crowded by adjacent tree, Broken Branches, Minor Deadwood	PRESERVE	1.8	478
480	Scots Pine	23	0	Fair	Pyramidal	Crowded by adjacent tree, Broken Branches, Minor Deadwood, Elevated Canopy	PRESERVE	1.8	480
481	Eastern White Pine	33	5	Fair	Pyramidal	Crowded by adjacent tree, Broken Branches, Minor Deadwood, Elevated Canopy	PRESERVE	2.4	481
481.1	White Pine	54.0	12.0	Good	One-sided	Crowded by adjacent tree, high crown	PRESERVE	3.6	481.1
482	Eastern White Pine	49	10	Fair	Pyramidal	Crowded by adjacent tree, Broken Branches, Minor Deadwood, Elevated Canopy	REMOVE	3.0	482
483	Black Locust	41	5	Fair	Irregular	Crowded by adjacent tree, Broken Branches, Minor Deadwood	REMOVE	3.0	483
483.1	White Spruce	26.0	6.0	Fair	Narrow form	Crowded by adjacent tree, dieback in shaded areas	REMOVE	1.8	483.1
484	Black Locust	36	5	Fair	Irregular	Crowded by adjacent tree, Broken Branches, Minor Deadwood	REMOVE	2.4	484
485	Black Locust	34	5	Fair	Irregular	Crowded by adjacent tree, Broken Branches, Minor Deadwood	REMOVE	2.4	485
486	Black Locust	17	0	Fair	Irregular	Crowded by adjacent tree, Broken Branches, Minor Deadwood	REMOVE	1.8	486
487	Black Locust	32	6	Fair	Irregular	Crowded by adjacent tree, Broken Branches, Minor Deadwood	REMOVE	2.4	487
487.1	Norway Maple	25.0	15.0	Good	Asymmetrical	Crowding by adjacent trees	REMOVE	1.8	487.1
489	Black Locust	36	5	Fair	Irregular	Crowded by adjacent tree, Broken Branches, Minor Deadwood	REMOVE	2.4	489
490	Eastern White Pine	41	7	Fair	Pyramidal	Crowded by adjacent tree, Broken Branches, Minor Deadwood, Elevated Canopy	REMOVE	3.0	490
490.1	Shagbark Hickory	22.5	8.0	Good	Narrow form	Crowding by adjacent tree, high crown	REMOVE	1.8	490.1
491	Eastern White Pine	56	12	Fair	Pyramidal	Crowded by adjacent tree, Broken Branches, Minor Deadwood, Elevated Canopy	REMOVE	3.6	491
491.1	Scots Pine	35.5	9.0	Fair	High crown	Crowding by adjacent tree, dieback throughout crowded parts, some crown dieback	REMOVE	2.4	491.1
492	Eastern White Pine	66	10	Fair	Pyramidal	Crowded by adjacent tree, Broken Branches, Minor Deadwood, Elevated Canopy	PRESERVE	4.2	492
493	Scots Pine	28	5	Fair	Pyramidal	Crowded by adjacent tree, Broken Branches, Minor Deadwood, Elevated Canopy	REMOVE	1.8	493
493.1	White Oak	45.0	11.0	Poor	One-sided	Crowded by adjacent tree, high crown, dieback throughout crown	REMOVE	3	493.1
494	Norway Maple	25	7	Fair	Irregular	Crowded by adjacent tree, Broken Branches, Minor Deadwood	REMOVE	1.8	494
494.1	White Spruce	25.0	6.0	Poor	Narrow form	Crowded by adjacent tree, vine entangled, dieback throughout	REMOVE	1.8	494.1
495	Norway Maple	22	6	Fair	Irregular	Crowded by adjacent tree, Broken Branches, Minor Deadwood	REMOVE	1.8	495
495.1	Shagbark Hickory	31.0	10.0	Good	High crown	Crowded by adjacent tree	REMOVE	2.4	495.1
496	Norway Maple	19	7	Fair	Irregular	Crowded by adjacent tree, Broken Branches, Minor Deadwood	REMOVE	1.8	496
496.1	Norway Maple	25.0	8.0	Good	Asymmetrical	Crowded by adjacent tree	REMOVE	1.8	496.1
497	Paper Birch	20,25	9	Fair	Multi-Stem	Crowded by adjacent tree, Broken Branches, Minor Deadwood	REMOVE	1.8	497
497.1	White Pine	75.0	8.0	Good	Narrow form	Mature, dieback on lower branches, twig tip dieback in upper crown, high crown	REMOVE	4.8	497.1
498	Eastern White Pine	62	15	Fair	Pyramidal	Crowded by adjacent tree, Broken Branches, Minor Deadwood, Elevated Canopy	REMOVE	4.2	498
498.1	Shagbark Hickory	17.5	7.0	Good	One-sided	Crowded by adjacent tree	REMOVE	1.8	498.1
499	Sugar Maple	55	15	Fair	Irregular	Crowded by adjacent tree, Broken Branches, Minor Deadwood	PRESERVE	3.6	499
499.1	Norway Maple	22.0	6.0	Good	Irregular form	Crowded by adjacent tree, minor deadwood	REMOVE	1.8	499.1
500	Scots Pine	36	8	Fair	Pyramidal	Crowded by adjacent tree, Broken Branches, Minor Deadwood, Elevated Canopy	REMOVE	2.4	500
500.1	Norway Maple	17.5	7.0	Good	Asymmetrical	Crowded by adjacent tree	REMOVE	1.8	500.1
501	Norway Spruce	55	10	Fair	Pyramidal	Crowded by adjacent tree, Broken Branches, Minor Deadwood, Elevated Canopy	REMOVE	3.6	501
502	Eastern White Pine	61	12	Dead			REMOVE		502
503	Norway Spruce	48	12	Fair	Pyramidal	Crowded by adjacent tree, Broken Branches, Minor Deadwood, Elevated Canopy	REMOVE	3.0	503
504	Paper Birch	25	5	Fair	Irregular	Crowded by adjacent tree, Broken Branches, Minor Deadwood	REMOVE	1.8	504
505	Paper Birch	30	8	Dead			REMOVE		505
506	Norway Spruce	38	6	Fair	Pyramidal	Crowded by adjacent tree, Broken Branches, Minor Deadwood, Elevated Canopy	REMOVE	2.4	506
507	Paper Birch	30	8	Dead			REMOVE		507
508	Norway Spruce	42	7	Fair	Pyramidal	Crowded by adjacent tree, Broken Branches, Minor Deadwood, Elevated Canopy	REMOVE	3.0	508
509	Paper Birch	42	2	Dead		Hazard	REMOVE		509
510	Norway Spruce	38	6	Fair	Pyramidal	Crowded by adjacent tree, Broken Branches, Minor Deadwood, Elevated Canopy	REMOVE	2.4	510
511	Norway Spruce	51	6	Fair	Pyramidal	Crowded by adjacent tree, Broken Branches, Minor Deadwood, Elevated Canopy	REMOVE	3.6	511
512	Norway Spruce	22,40	6	Fair	Multi-Stem	Crowded by adjacent tree, Broken Branches, Minor Deadwood	REMOVE	3.0	512
513	Paper Birch	28	5	Dead		Failed	REMOVE		513
514	Norway Spruce	55	12	Fair	Pyramidal	Crowded by adjacent tree, Broken Branches, Minor Deadwood, Elevated Canopy	REMOVE	3.6	514
515	Norway Spruce	36	3	Fair	Pyramidal	Crowded by adjacent tree, Broken Branches, Minor Deadwood, Elevated Canopy	REMOVE	2.4	515

**ARBORIST REPORT  
PROPOSED RESIDENTIAL DEVELOPMENT  
904 MISSISSAUGA HEIGHTS DRIVE, MISSISSAUGA, ONTARIO**

EXISTING TREE INVENTORY									
KEY	SPECIES	DBH (centimetres)	CROWN (metres)	HEALTH G/F/P	STRUCTURE	COMMENTS	PRESERVATION DIRECTION	MIN. TPZ (metres)	KEY
516	Norway Spruce	26	6	Fair	Pyramidal	Crowded by adjacent tree, Broken Branches, Minor Deadwood, Elevated Canopy	REMOVE	1.8	516
517	Norway Spruce	48	5	Fair	Pyramidal	Crowded by adjacent tree, Broken Branches, Minor Deadwood, Elevated Canopy	REMOVE	3.0	517
518	Norway Spruce	42	7	Fair	Pyramidal	Crowded by adjacent tree, Broken Branches, Minor Deadwood, Elevated Canopy	PRESERVE	3.0	518
519	Norway Spruce	55	9	Dead			PRESERVE	3.6	519
520	Silver Maple	131	20	Fair	Irregular	Crowded by adjacent tree, Broken Branches, Minor Deadwood	REMOVE	7.86	520
521	Norway Spruce	48	7	Fair	Pyramidal	Crowded by adjacent tree, Broken Branches, Minor Deadwood, Elevated Canopy	REMOVE	3.0	521
522	Scots Pine	33	5	Fair	Pyramidal	Crowded by adjacent tree, Broken Branches, Minor Deadwood, Elevated Canopy	PRESERVE	2.4	522
523	Eastern White Pine	41	6	Fair	Pyramidal	Crowded by adjacent tree, Broken Branches, Minor Deadwood, Elevated Canopy	PRESERVE	3.0	523
524	Eastern White Pine	48	6	Fair	Pyramidal	Crowded by adjacent tree, Broken Branches, Minor Deadwood, Elevated Canopy	PRESERVE	3.0	524
525	Sugar Maple	73	15	Fair	Irregular	Crowded by adjacent tree, Broken Branches, Minor Deadwood	PRESERVE	4.8	525
526	Eastern White Pine	38	3	Fair	Pyramidal	Crowded by adjacent tree, Broken Branches, Minor Deadwood, Elevated Canopy	PRESERVE	2.4	526
527	Northern Red Oak	51	15	Fair	Irregular	Crowded by adjacent tree, Broken Branches, Minor Deadwood	REMOVE	3.6	527
528	Norway Maple	19	4	Fair	Irregular	Crowded by adjacent tree, Broken Branches, Minor Deadwood	REMOVE	1.8	528
529	Norway Maple	18	4	Fair	Irregular	Crowded by adjacent tree, Broken Branches, Minor Deadwood	REMOVE	1.8	529
530	Shagbark Hickory	18	6	Fair	Irregular	Crowded by adjacent tree, Broken Branches, Minor Deadwood	REMOVE	1.8	530
531	Eastern White Pine	73	7	Dead			REMOVE		531
532	Sugar Maple	17	6	Fair	Irregular	Crowded by adjacent tree, Broken Branches, Minor Deadwood	REMOVE	1.8	532
533	Sugar Maple	15	6	Fair	Irregular	Crowded by adjacent tree, Broken Branches, Minor Deadwood	REMOVE	1.8	533
534	Sugar Maple	28	6	Fair	Irregular	Crowded by adjacent tree, Broken Branches, Minor Deadwood	REMOVE	1.8	534
535	Shagbark Hickory	32	7	Fair	Irregular	Crowded by adjacent tree, Broken Branches, Minor Deadwood	REMOVE	2.4	535
536	White Spruce	25	3	Dead			REMOVE		536
537	Sugar Maple	69	12	Fair	Irregular	Crowded by adjacent tree, Broken Branches, Minor Deadwood	REMOVE	4.2	537
538	Sugar Maple	31	10	Fair	Irregular	Crowded by adjacent tree, Broken Branches, Minor Deadwood	REMOVE	2.4	538
539	Sugar Maple	69	15	Fair	Irregular	Crowded by adjacent tree, Broken Branches, Minor Deadwood	REMOVE	4.2	539
540	White Oak	48	10	Fair	One-sided	Crowded by adjacent tree, Broken Branches, Minor Deadwood	REMOVE	3.0	540
541	Sugar Maple	30,80	5	Fair	One-sided	Crowded by adjacent tree, Broken Branches, Minor Deadwood	REMOVE	5.4	541
710	Silver Fir	14	4	Good	Pyramidal	Branching to grade, Minor dead wood	PRESERVE	1.8	710
711	Yew	13	6	Fair	One-sided	Crowded by adjacent tree, Branching to grade, Minor deadwood	REMOVE	1.8	711
712	Sugar Maple	13	6	Fair	Irregular	Crowded by adjacent tree, Understory tree, Minor Deadwood	REMOVE	1.8	712
713	Sugar Maple	10	2	Fair	Irregular	Crowded by adjacent tree, Thin, Understory tree, Elevated canopy	REMOVE	1.8	713
714	Sugar Maple	11	4	Fair	Irregular	Crowded by adjacent tree, Thin, Understory tree, Elevated canopy	REMOVE	1.8	714
715	Sugar Maple	11	5	Fair	Irregular	Crowded by adjacent tree, Broken Branches, Minor Deadwood	REMOVE	1.8	715
716	Black Cherry	11	4	Fair	Irregular	Crowded by adjacent tree, Thin, Understory tree, Elevated canopy	REMOVE	1.8	716
717	Sugar Maple	11	5	Fair	Irregular	Crowded by adjacent tree, Elevated canopy, Minor Deadwood	REMOVE	1.8	717
718	Sugar Maple	12	6	Fair	Irregular	Crowded by adjacent tree, Elevated canopy, Minor Deadwood	REMOVE	1.8	718
719	Sugar Maple	11	6	Fair	Irregular	Crowded by adjacent tree, Elevated canopy, Minor Deadwood	REMOVE	1.8	719
720	Crab Apple	14	6	Fair	One-sided	Crowded by adjacent tree, Major Deadwood	PRESERVE	1.8	720
721	White Cedar	9-10	6	Fair	Multi-Stem	Crowded by adjacent tree, Elevated canopy, Exposed Roots, Major Deadwood	PRESERVE	1.8	721
722	White Cedar	14	6	Fair	Irregular	Crowded by adjacent tree, Elevated canopy, Exposed Roots, Major Deadwood	PRESERVE	1.8	722
805	Norway Maple	12	2	Fair	Irregular	Crowded by adjacent tree, Broken Branches, Minor Deadwood	REMOVE	1.8	805
806	Black Cherry	15	2	Dead			REMOVE		806
807	Apple Species	15,17	8	Fair	Multi-Stem	Crowded by adjacent tree, Broken Branches, Minor Deadwood	REMOVE	1.8	807
808	Norway Maple	17	3	Fair	Irregular	Crowded by adjacent tree, Broken Branches, Minor Deadwood	REMOVE	1.8	808
809	Norway Maple	14	4	Fair	Irregular	Crowded by adjacent tree, Broken Branches, Minor Deadwood	REMOVE	1.8	809
810	Black Cherry	11	4	Fair	Irregular	Crowded by adjacent tree, Broken Branches, Minor Deadwood	REMOVE	1.8	810
811	White Ash	16	3	Fair	Irregular	Crowded by adjacent tree, Broken Branches, Minor Deadwood	REMOVE	1.8	811
812	Black Cherry	15	7	Fair	Irregular	Crowded by adjacent tree, Broken Branches, Minor Deadwood	PRESERVE	1.8	812
813	Black Cherry	13	3	Fair	Irregular	Crowded by adjacent tree, Broken Branches, Minor Deadwood	REMOVE	1.8	813
814	Norway Maple	13	8	Fair	Irregular	Crowded by adjacent tree, Broken Branches, Minor Deadwood	PRESERVE	1.8	814
815	Norway Maple	13	3	Fair	Irregular	Crowded by adjacent tree, Broken Branches, Minor Deadwood	PRESERVE	1.8	815
816	Norway Maple	12	3	Fair	Irregular	Crowded by adjacent tree, Broken Branches, Minor Deadwood	PRESERVE	1.8	816
817	Norway Maple	14	3	Fair	Irregular	Crowded by adjacent tree, Broken Branches, Minor Deadwood	PRESERVE	1.8	817
818	Norway Maple	14	3	Fair	Irregular	Crowded by adjacent tree, Broken Branches, Minor Deadwood	PRESERVE	1.8	818
819	Norway Maple	11	2	Fair	Irregular	Crowded by adjacent tree, Broken Branches, Minor Deadwood	REMOVE	1.8	819
820	Norway Maple	15	5	Fair	Irregular	Crowded by adjacent tree, Broken Branches, Minor Deadwood	REMOVE	1.8	820
821	Norway Maple	14	4	Fair	Irregular	Crowded by adjacent tree, Broken Branches, Minor Deadwood	REMOVE	1.8	821
822	Norway Maple	12	2	Fair	Irregular	Crowded by adjacent tree, Broken Branches, Minor Deadwood	REMOVE	1.8	822
823	Norway Maple	12	2	Fair	Irregular	Crowded by adjacent tree, Broken Branches, Minor Deadwood	REMOVE	1.8	823
824	Norway Maple	17	4	Fair	Irregular	Crowded by adjacent tree, Broken Branches, Minor Deadwood	REMOVE	1.8	824
825	Norway Maple	11	3	Fair	Irregular	Crowded by adjacent tree, Broken Branches, Minor Deadwood	REMOVE	1.8	825

**ARBORIST REPORT**  
**PROPOSED RESIDENTIAL DEVELOPMENT**  
**904 MISSISSAUGA HEIGHTS DRIVE, MISSISSAUGA, ONTARIO**

EXISTING TREE INVENTORY									
KEY	SPECIES	DBH	CROWN	HEALTH	STRUCTURE	COMMENTS	PRESERVATION	MIN. TPZ	KEY
		(centimetres)	(metres)	G/F/P	DIRECTION		(metres)		
826	Norway Maple	12	4	Fair	Irregular	Crowded by adjacent tree, Broken Branches, Minor Deadwood	REMOVE	1.8	826
827	Norway Maple	14	4	Fair	Irregular	Crowded by adjacent tree, Broken Branches, Minor Deadwood	REMOVE	1.8	827
828	Norway Maple	14	3	Fair	Irregular	Crowded by adjacent tree, Broken Branches, Minor Deadwood	REMOVE	1.8	828
829	Norway Maple	14	2	Fair	Irregular	Crowded by adjacent tree, Broken Branches, Minor Deadwood	REMOVE	1.8	829
830	Norway Maple	11	2	Fair	Irregular	Crowded by adjacent tree, Broken Branches, Minor Deadwood	REMOVE	1.8	830
831	Norway Maple	14	2	Fair	Irregular	Crowded by adjacent tree, Broken Branches, Minor Deadwood	PRESERVE	1.8	831
832	Norway Maple	13	3	Fair	Irregular	Crowded by adjacent tree, Broken Branches, Minor Deadwood	PRESERVE	1.8	832
833	Norway Maple	13	4	Fair	Irregular	Crowded by adjacent tree, Broken Branches, Minor Deadwood	PRESERVE	1.8	833
834	Norway Maple	13	2	Fair	Irregular	Crowded by adjacent tree, Broken Branches, Minor Deadwood	PRESERVE	1.8	834
835	Norway Maple	16	5	Fair	Irregular	Crowded by adjacent tree, Broken Branches, Minor Deadwood	REMOVE	1.8	835
836	Norway Maple	12	3	Fair	Irregular	Crowded by adjacent tree, Broken Branches, Minor Deadwood	REMOVE	1.8	836
837	Norway Maple	11	2	Fair	Irregular	Crowded by adjacent tree, Broken Branches, Minor Deadwood	REMOVE	1.8	837
838	Norway Maple	12	3	Fair	Irregular	Crowded by adjacent tree, Broken Branches, Minor Deadwood	REMOVE	1.8	838
839	Norway Maple	12	11	Fair	Irregular	Crowded by adjacent tree, Broken Branches, Minor Deadwood	PRESERVE	1.8	839
840	Norway Maple	16	6	Fair	Irregular	Crowded by adjacent tree, Broken Branches, Minor Deadwood	PRESERVE	1.8	840
842	Black Locust	58,64	12	Fair	Multi-Stem	Crowded by adjacent tree, Broken Branches, Minor Deadwood	PRESERVE	4.2	842
843	Eastern White Cedar	15	1	Fair	Irregular	Crowded by adjacent tree, Broken Branches, Minor Deadwood	PRESERVE	1.8	843
844	Eastern White Cedar	14	2	Fair	Irregular	Crowded by adjacent tree, Broken Branches, Minor Deadwood	PRESERVE	1.8	844
845	Eastern White Cedar	15	3	Fair	Irregular	Crowded by adjacent tree, Broken Branches, Minor Deadwood	PRESERVE	1.8	845
846	Norway Maple	14	4	Fair	Irregular	Crowded by adjacent tree, Broken Branches, Minor Deadwood	PRESERVE	1.8	846
847	Norway Maple	11	2	Fair	Irregular	Crowded by adjacent tree, Broken Branches, Minor Deadwood	PRESERVE	1.8	847
848	Norway Maple	12	3	Fair	Irregular	Crowded by adjacent tree, Broken Branches, Minor Deadwood	PRESERVE	1.8	848
849	Norway Maple	12	4	Fair	Irregular	Crowded by adjacent tree, Broken Branches, Minor Deadwood	PRESERVE	1.8	849
850	Norway Maple	10,13	2	Fair	Multi-Stem	Crowded by adjacent tree, Broken Branches, Minor Deadwood	REMOVE	1.8	850
851	Norway Maple	15	3	Fair	Irregular	Crowded by adjacent tree, Broken Branches, Minor Deadwood	REMOVE	1.8	851
852	Black Cherry	12	4	Fair	Irregular	Crowded by adjacent tree, Broken Branches, Minor Deadwood	REMOVE	1.8	852
853	Black Cherry	12	3	Fair	Irregular	Crowded by adjacent tree, Broken Branches, Minor Deadwood	REMOVE	1.8	853
854	Norway Maple	15	4	Fair	Irregular	Crowded by adjacent tree, Broken Branches, Minor Deadwood	REMOVE	1.8	854
855	White Mulberry	17,20	5	Fair	Multi-Stem	Crowded by adjacent tree, Broken Branches, Minor Deadwood	REMOVE	1.8	855
856	Eastern Cottonwood	23	4	Fair	Irregular	Crowded by adjacent tree, Broken Branches, Minor Deadwood	REMOVE	1.8	856
857	Norway Maple	12	2	Fair	Irregular	Crowded by adjacent tree, Broken Branches, Minor Deadwood	REMOVE	1.8	857
858	Norway Maple	12	2	Fair	Irregular	Crowded by adjacent tree, Broken Branches, Minor Deadwood	REMOVE	1.8	858
859	Norway Maple	11	4	Fair	Irregular	Crowded by adjacent tree, Broken Branches, Minor Deadwood	REMOVE	1.8	859
860	Norway Maple	16	6	Fair	Irregular	Crowded by adjacent tree, Broken Branches, Minor Deadwood	REMOVE	1.8	860
861	Norway Maple	16	5	Fair	Irregular	Crowded by adjacent tree, Broken Branches, Minor Deadwood	REMOVE	1.8	861
862	Norway Maple	16	4	Fair	Irregular	Crowded by adjacent tree, Broken Branches, Minor Deadwood	REMOVE	1.8	862
863	Norway Maple	14	5	Fair	Irregular	Crowded by adjacent tree, Broken Branches, Minor Deadwood	REMOVE	1.8	863
864	Norway Maple	7,14	6	Fair	Multi-Stem	Crowded by adjacent tree, Broken Branches, Minor Deadwood	REMOVE	1.8	864
865	Norway Maple	12	2	Fair	One-sided	Crowded by adjacent tree, Broken Branches, Minor Deadwood	REMOVE	1.8	865
866	Norway Maple	14	4	Fair	One-sided	Crowded by adjacent tree, Broken Branches, Minor Deadwood	REMOVE	1.8	866
867	Norway Maple	11	4	Fair	Irregular	Crowded by adjacent tree, Broken Branches, Minor Deadwood	REMOVE	1.8	867
868	Eastern Red Cedar	11,13	4	Fair	Multi-Stem	Crowded by adjacent tree, Broken Branches, Minor Deadwood	PRESERVE	1.8	868
869	Norway Maple	49	10	Fair	Irregular	Crowded by adjacent tree, Broken Branches, Minor Deadwood, Double Leader	PRESERVE	3.0	869

## Observations

The trees identified within and immediately adjacent to the property can be described as primarily semi-mature to mature naturalized groupings of trees with a smaller number of planted, landscape accent trees. The majority of the naturalized wooded area occurs south of the existing driveway and along the northeast corner of the property as well as along the east limit flanking the valley edge. A designated Natural Heritage System flanks the east edge of the property. The trees are mostly semi-mature to mature species in varying levels of health and condition. A small number of trees are dead or in poor health. The species inventoried are mainly composed of White Pine, Sugar Maple, Red Oak, Black Cherry, Ironwood, Paper Birch, and Norway Maple.

## Tree Preservation

In determining the tree preservation recommendations for the site, the criteria noted below were considered:

- Overall tree health, form, size, species and predicated longevity.
- Anticipated impact from construction of buildings and proposed landscape features, road works, site servicing and grading.

Each tree was assigned a minimum Tree Preservation Zone (TPZ) as per standard requirements used by municipal by-laws (*Refer to Table 2-Tree Protection Zones*).



**ARBORIST REPORT  
PROPOSED RESIDENTIAL DEVELOPMENT  
904 MISSISSAUGA HEIGHTS DRIVE, MISSISSAUGA, ONTARIO**

**Table 2 - Tree Protection Zones**

<i>Trunk Diameter (DBH)</i>	<i>Minimum Protection Zone</i>
<10 cm	1.2m
10-29 cm	1.8 m
30-40 cm	2.4 m
41-50 cm	3.0 m
51-60 cm	3.6 m
61-70 cm	4.2 m
71-80 cm	4.8 m
81-90 cm	5.4 m
91-100 cm	6.0 m
< 100 cm	6cm per 1cm DBH

**Private Tree By-Law**

**Table 3 – Tree Categories**

<b>CITY OF MISSISSAUGA TREE CATEGORIES</b>	
1	Trees with diameters of 15cm or more, situated on private property, on the subject site.
2	Trees with diameters of 15cm or more, situated on private property, within 6m of the subject site.
3	Trees of all diameters situated within the City road allowance adjacent to the subject site.
4 <i>(exempt)</i>	Trees that are less than 15cm diameter and located on private property.

The City of Mississauga Private Tree Bylaw protects trees found on private property that are greater than 15cm DBH (Diameter at Breast Height) as well as trees of all diameters situated within the City road allowance.

The By-law states that:

- No Person shall Injure or Destroy a Tree with a Diameter of 15 centimeters or greater located on private property without a valid permit.
- No Person shall interfere with Hoarding that is erected in accordance with this By-law.
- No Person shall injure or destroy a Replacement Tree without a valid Permit.
- Permission is required for Ash or dead tree removals, but no permit fee is required.

The site planning for this property includes a 2,297 sq.m Natural Heritage System as well as protected area Table land woodland areas which allow for the preservation of trees within a 1,145 sq.m area of the property. This area has also been noted as a potential tree compensation planting area.

**Tree Removals**

The following is a summary of proposed tree removals for this site that will require a permit for removal in accordance with City of Mississauga Private Tree Bylaw. A total of one hundred sixty nine (169) trees, subject to the Private Tree Bylaw, are to be removed to accommodate the proposed site plan, grading and servicing requirements.

**ARBORIST REPORT**  
**PROPOSED RESIDENTIAL DEVELOPMENT**  
**904 MISSISSAUGA HEIGHTS DRIVE, MISSISSAUGA, ONTARIO**

**Table 4 – Tree Removals subject to Private Tree Bylaw***(Refer to Existing Tree Inventory List for details pertaining to specific trees)*

KEY	SPECIES	CALIPER (cm)	HEALTH G/F/P	REASON	STATUS	OWNERSHIP
001	Scots Pine	29	Dead	Construction	REMOVE	Private
002	Scots Pine	33	Dead	Construction	REMOVE	Private
003	White Ash	22	Dead	Construction	REMOVE	Private
004	Scots Pine	36	Fair	Construction	REMOVE	Private
005	Norway Spruce	70	Fair	Construction	REMOVE	Private
006	Shagbark Hickory	24	Fair	Construction	REMOVE	Private
007	Sugar Maple	18	Fair	Construction	REMOVE	Private
008	Scots Pine	58	Fair	Construction	REMOVE	Private
009	Norway Maple	20	Fair	Construction	REMOVE	Private
010	Scots Pine	50	Fair	Construction	REMOVE	Private
011	Northern Red Oak	41,43	Fair	Construction	REMOVE	Private
012	Northern Red Oak	46,49	Fair	Construction	REMOVE	Private
013	Sugar Maple	16	Fair	Construction	REMOVE	Private
014	Norway Spruce	17	Fair	Construction	REMOVE	Private
015	Norway Spruce	28	Fair	Construction	REMOVE	Private
016	Norway Spruce	78	Dead	Construction	REMOVE	Private
017	Norway Spruce	22	Dead	Construction	REMOVE	Private
018	Norway Maple	19	Fair	Construction	REMOVE	Private
019	White Pine	27	Fair	Construction	REMOVE	Private
020	Norway Maple	25	Fair	Construction	REMOVE	Private
021	Norway Maple	22	Fair	Construction	REMOVE	Private
022	Shagbark Hickory	29	Poor	Construction	REMOVE	Private
023	Norway Spruce	49	Poor	Construction	REMOVE	Private
024	Shagbark Hickory	56	Poor	Construction	REMOVE	Private
025	Sugar Maple	44	Fair	Construction	REMOVE	Private
053	Eastern White Pine	19	Fair	Construction	REMOVE	Private
054	Black Locust	51	Fair	Construction	REMOVE	Private
055	Eastern White Pine	60	Fair	Construction	REMOVE	Private
236	Red Oak	51.0	Good	Construction	REMOVE	Private
244	Paper Birch	24.5-30	Poor	Construction	REMOVE	Private
321	Shagbark Hickory	67	Fair	Construction	REMOVE	Private
328	White Spruce	54	Dead	Construction	REMOVE	Private
329	Hawthorn Species	25	Fair	Construction	REMOVE	Private
334	Norway Maple	19	Fair	Construction	REMOVE	Private
335	Black Cherry	68	Fair	Construction	REMOVE	Private
338	Blue Spruce	17	Fair	Construction	REMOVE	Private
339	Beech	26	Fair	Construction	REMOVE	Private
407	American Basswood	42	Fair	Construction	REMOVE	Private
408	Norway Maple	42	Fair	Construction	REMOVE	Private
409	Norway Maple	19	Fair	Construction	REMOVE	Private
410	Norway Maple	32	Fair	Construction	REMOVE	Private
411	Scots Pine	31	Dead	Construction	REMOVE	Private
412	Scots Pine	25	Fair	Construction	REMOVE	Private
413	Eastern White Pine	26	Fair	Construction	REMOVE	Private
414	Norway Spruce	49	Fair	Construction	REMOVE	Private
415	Norway Maple	36	Fair	Construction	REMOVE	Private
416	Norway Maple	25	Fair	Construction	REMOVE	Private
417	Northern Red Oak	41	Fair	Construction	REMOVE	Private
418	Northern Red Oak	25	Fair	Construction	REMOVE	Private
419	Large-toothed Aspen	44	Fair	Construction	REMOVE	Private
420	Norway Maple	26	Fair	Construction	REMOVE	Private

**ARBORIST REPORT**  
**PROPOSED RESIDENTIAL DEVELOPMENT**  
**904 MISSISSAUGA HEIGHTS DRIVE, MISSISSAUGA, ONTARIO**

KEY	SPECIES	CALIPER (cm)	HEALTH G/F/P	REASON	STATUS	OWNERSHIP
421	Northern Red Oak	36	Fair	Construction	REMOVE	Private
422	Blue Spruce	28	Dead	Construction	REMOVE	Private
423	Norway Spruce	62	Fair	Construction	REMOVE	Private
424	Norway Spruce	38	Dead	Construction	REMOVE	Private
427	Eastern White Pine	49	Dead	Construction	REMOVE	Private
428	Norway Spruce	50	Fair	Construction	REMOVE	Private
429	Norway Maple	68	Fair	Construction	REMOVE	Private
430	Eastern White Pine	56	Fair	Construction	REMOVE	Private
432	Eastern White Pine	53	Fair	Construction	REMOVE	Private
433	Red Maple	37,56	Fair	Construction	REMOVE	Private
434	Spruce Species	42	Fair	Construction	REMOVE	Private
435	Black Cherry	40	Fair	Construction	REMOVE	Private
436	Norway Spruce	44	Fair	Construction	REMOVE	Private
437	Eastern White Pine	43	Fair	Construction	REMOVE	Private
438	Black Cherry	40	Fair	Construction	REMOVE	Private
439	Northern Red Oak	28	Fair	Construction	REMOVE	Private
440	Norway Maple	25	Fair	Construction	REMOVE	Private
441	Scots Pine	39	Fair	Construction	REMOVE	Private
442	Scots Pine	28	Fair	Construction	REMOVE	Private
443	Eastern White Pine	48	Fair	Construction	REMOVE	Private
444	Eastern White Pine	32,73	Fair	Construction	REMOVE	Private
445	Eastern White Pine	55	Fair	Construction	REMOVE	Private
446	Eastern White Pine	54	Fair	Construction	REMOVE	Private
447	Ash Species	49	Dead	Construction	REMOVE	Private
448	Eastern White Pine	43	Dead	Construction	REMOVE	Private
449	Northern Red Oak	61	Fair	Construction	REMOVE	Private
451	Black Walnut	54	Fair	Construction	REMOVE	Private
452	Norway Maple	57	Fair	Construction	REMOVE	Private
453	Norway Maple	54	Fair	Construction	REMOVE	Private
454	Northern Red Oak	55,60	Fair	Construction	REMOVE	Private
455	Norway Maple	23	Fair	Construction	REMOVE	Private
456	Norway Maple	18	Fair	Construction	REMOVE	Private
457	Norway Maple	23	Fair	Construction	REMOVE	Private
458	Norway Maple	22	Fair	Construction	REMOVE	Private
339	Beech	26	Fair	Construction	REMOVE	Private
464	Norway Maple	21	Fair	Construction	REMOVE	Private
467	Norway Maple	20	Fair	Construction	REMOVE	Private
468	Black Locust	37	Fair	Construction	REMOVE	Private
469	Black Cherry	23	Dead	Construction	REMOVE	Private
470	Black Locust	36	Fair	Construction	REMOVE	Private
471	Black Locust	54	Fair	Construction	REMOVE	Private
473	Green Ash	15	Fair	Construction	REMOVE	Private
482	Eastern White Pine	49	Fair	Construction	REMOVE	Private
483	Black Locust	41	Fair	Construction	REMOVE	Private
483.1	White Spruce	26.0	Fair	Construction	REMOVE	Private
484	Black Locust	36	Fair	Construction	REMOVE	Private
485	Black Locust	34	Fair	Construction	REMOVE	Private
486	Black Locust	17	Fair	Construction	REMOVE	Private
487	Black Locust	32	Fair	Construction	REMOVE	Private
487.1	Norway Maple	25.0	Good	Construction	REMOVE	Private
489	Black Locust	36	Fair	Construction	REMOVE	Private
490	Eastern White Pine	41	Fair	Construction	REMOVE	Private

**ARBORIST REPORT**  
**PROPOSED RESIDENTIAL DEVELOPMENT**  
**904 MISSISSAUGA HEIGHTS DRIVE, MISSISSAUGA, ONTARIO**

KEY	SPECIES	CALIPER (cm)	HEALTH G/F/P	REASON	STATUS	OWNERSHIP
490	Eastern White Pine	41	Fair	Construction	REMOVE	Private
490.1	Shagbark Hickory	22.5	Good	Construction	REMOVE	Private
491	Eastern White Pine	56	Fair	Construction	REMOVE	Private
491.1	Scots Pine	35.5	Fair	Construction	REMOVE	Private
493	Scots Pine	28	Fair	Construction	REMOVE	Private
493.1	White Oak	45.0	Poor	Construction	REMOVE	Private
494	Norway Maple	25	Fair	Construction	REMOVE	Private
494.1	White Spruce	25.0	Poor	Construction	REMOVE	Private
495	Norway Maple	22	Fair	Construction	REMOVE	Private
495.1	Shagbark Hickory	31.0	Good	Construction	REMOVE	Private
496	Norway Maple	19	Fair	Construction	REMOVE	Private
496.1	Norway Maple	25.0	Good	Construction	REMOVE	Private
497	Paper Birch	20,25	Fair	Construction	REMOVE	Private
497.1	White Pine	75.0	Good	Construction	REMOVE	Private
498	Eastern White Pine	62	Fair	Construction	REMOVE	Private
498.1	Shagbark Hickory	17.5	Good	Construction	REMOVE	Private
499.1	Norway Maple	22.0	Good	Construction	REMOVE	Private
500	Scots Pine	36	Fair	Construction	REMOVE	Private
500.1	Norway Maple	17.5	Good	Construction	REMOVE	Private
501	Norway Spruce	55	Fair	Construction	REMOVE	Private
502	Eastern White Pine	61	Dead	Construction	REMOVE	Private
503	Norway Spruce	48	Fair	Construction	REMOVE	Private
504	Paper Birch	25	Fair	Construction	REMOVE	Private
505	Paper Birch	30	Dead	Construction	REMOVE	Private
506	Norway Spruce	38	Fair	Construction	REMOVE	Private
507	Paper Birch	30	Dead	Construction	REMOVE	Private
508	Norway Spruce	42	Fair	Construction	REMOVE	Private
509	Paper Birch	42	Dead	Construction	REMOVE	Private
510	Norway Spruce	38	Fair	Construction	REMOVE	Private
511	Norway Spruce	51	Fair	Construction	REMOVE	Private
512	Norway Spruce	22,40	Fair	Construction	REMOVE	Private
513	Paper Birch	28	Dead	Construction	REMOVE	Private
514	Norway Spruce	55	Fair	Construction	REMOVE	Private
515	Norway Spruce	36	Fair	Construction	REMOVE	Private
516	Norway Spruce	26	Fair	Construction	REMOVE	Private
517	Norway Spruce	48	Fair	Construction	REMOVE	Private
520	Silver Maple	131	Fair	Construction	REMOVE	Private
521	Norway Spruce	48	Fair	Construction	REMOVE	Private
527	Northern Red Oak	51	Fair	Construction	REMOVE	Private
528	Norway Maple	19	Fair	Construction	REMOVE	Private
529	Norway Maple	18	Fair	Construction	REMOVE	Private
530	Shagbark Hickory	18	Fair	Construction	REMOVE	Private
531	Eastern White Pine	73	Dead	Construction	REMOVE	Private
532	Sugar Maple	17	Fair	Construction	REMOVE	Private
533	Sugar Maple	15	Fair	Construction	REMOVE	Private
534	Sugar Maple	28	Fair	Construction	REMOVE	Private
535	Shagbark Hickory	32	Fair	Construction	REMOVE	Private
536	White Spruce	25	Dead	Construction	REMOVE	Private
537	Sugar Maple	69	Fair	Construction	REMOVE	Private
538	Sugar Maple	31	Fair	Construction	REMOVE	Private
539	Sugar Maple	69	Fair	Construction	REMOVE	Private
540	White Oak	48	Fair	Construction	REMOVE	Private
541	Sugar Maple	30,80	Fair	Construction	REMOVE	Private

**ARBORIST REPORT  
PROPOSED RESIDENTIAL DEVELOPMENT  
904 MISSISSAUGA HEIGHTS DRIVE, MISSISSAUGA, ONTARIO**

KEY	SPECIES	CALIPER (cm)	HEALTH G/F/P	REASON	STATUS	OWNERSHIP
806	Black Cherry	15	Dead	Construction	REMOVE	Private
807	Apple Species	15,17	Fair	Construction	REMOVE	Private
808	Norway Maple	17	Fair	Construction	REMOVE	Private
811	White Ash	16	Fair	Construction	REMOVE	Private
820	Norway Maple	15	Fair	Construction	REMOVE	Private
824	Norway Maple	17	Fair	Construction	REMOVE	Private
835	Norway Maple	16	Fair	Construction	REMOVE	Private
851	Norway Maple	15	Fair	Construction	REMOVE	Private
854	Norway Maple	15	Fair	Construction	REMOVE	Private
855	White Mulberry	17,20	Fair	Construction	REMOVE	Private
856	Eastern Cottonwood	23	Fair	Construction	REMOVE	Private
860	Norway Maple	16	Fair	Construction	REMOVE	Private
861	Norway Maple	16	Fair	Construction	REMOVE	Private
862	Norway Maple	16	Fair	Construction	REMOVE	Private

**Total of 169 Trees to be Removed**

**Tree Protection** (Refer to Appendix D – Tree Protection Hoarding Detail).

All trees eligible for preservation shall be protected in accordance with City of Mississauga tree protection standards. Tree protection is to be installed along the limit of the minimum TPZ or as outlined on the V100 - Tree Inventory, Preservation & Removals Plan. Hoarding is to remain in place throughout the duration of construction and should be periodically reviewed by the Consulting Arborist to ensure that it remains in good working condition.

**Tree Compensation Requirements**

The City of Mississauga requires replacement trees be provided for one or more trees 15cm or greater on your property. One replacement tree is required for every 15cm diameter being removed.

A Tree Replacement security deposit determined by the City is required to ensure that the replacement trees are planted on private property. If there is no sufficient space to accommodate the trees, you must pay to plant replacement trees on City property.

The City requests that replacement trees be at a minimum 1.8m tall if coniferous and 6cm in diameter if deciduous.

**ARBORIST REPORT**  
**PROPOSED RESIDENTIAL DEVELOPMENT**  
**904 MISSISSAUGA HEIGHTS DRIVE, MISSISSAUGA, ONTARIO**

Table 5 – Tree Compensation List

KEY	SPECIES	CALIPER (cm)	HEALTH G/F/P	COMPENSATION
001	Scots Pine	29	Dead	
002	Scots Pine	33	Dead	
003	White Ash	22	Dead	
004	Scots Pine	36	Fair	2
005	Norway Spruce	70	Fair	5
006	Shagbark Hickory	24	Fair	2
007	Sugar Maple	18	Fair	1
008	Scots Pine	58	Fair	4
009	Norway Maple	20	Fair	1
010	Scots Pine	50	Fair	3
011	Northern Red Oak	41,43	Fair	3
012	Northern Red Oak	46,49	Fair	3
013	Sugar Maple	16	Fair	1
014	Norway Spruce	17	Fair	1
015	Norway Spruce	28	Fair	2
016	Norway Spruce	78	Dead	
017	Norway Spruce	22	Dead	
018	Norway Maple	19	Fair	1
019	White Pine	27	Fair	2
020	Norway Maple	25	Fair	2
021	Norway Maple	22	Fair	1
022	Shagbark Hickory	29	Poor	
023	Norway Spruce	49	Poor	
024	Shagbark Hickory	56	Poor	
025	Sugar Maple	44	Fair	3
053	Eastern White Pine	19	Fair	1
054	Black Locust	51	Fair	3
055	Eastern White Pine	60	Fair	4
236	Red Oak	51.0	Good	3
244	Paper Birch	24.5-30	Poor	
321	Shagbark Hickory	67	Fair	4
328	White Spruce	54	Dead	
329	Hawthorn Species	25	Fair	2
334	Norway Maple	19	Fair	1
335	Black Cherry	68	Fair	5
338	Blue Spruce	17	Fair	1
339	Beech	26	Fair	2
407	American Basswood	42	Fair	3
408	Norway Maple	42	Fair	3
409	Norway Maple	19	Fair	1
410	Norway Maple	32	Fair	2
411	Scots Pine	31	Dead	
412	Scots Pine	25	Fair	2
413	Eastern White Pine	26	Fair	2
414	Norway Spruce	49	Fair	3
415	Norway Maple	36	Fair	2
416	Norway Maple	25	Fair	2
417	Northern Red Oak	41	Fair	3
418	Northern Red Oak	25	Fair	2
419	Large-toothed Aspen	44	Fair	3
420	Norway Maple	26	Fair	2

KEY	SPECIES	CALIPER (cm)	HEALTH G/F/P	COMPENSATION
421	Northern Red Oak	36	Fair	2
422	Blue Spruce	28	Dead	
423	Norway Spruce	62	Fair	4
424	Norway Spruce	38	Dead	
427	Eastern White Pine	49	Dead	
428	Norway Spruce	50	Fair	3
429	Norway Maple	68	Fair	5
430	Eastern White Pine	56	Fair	4
432	Eastern White Pine	53	Fair	4
433	Red Maple	37,56	Fair	4
434	Spruce Species	42	Fair	3
435	Black Cherry	40	Fair	3
436	Norway Spruce	44	Fair	3
437	Eastern White Pine	43	Fair	3
438	Black Cherry	40	Fair	3
439	Northern Red Oak	28	Fair	2
440	Norway Maple	25	Fair	2
441	Scots Pine	39	Fair	3
442	Scots Pine	28	Fair	2
443	Eastern White Pine	48	Fair	3
444	Eastern White Pine	32,73	Fair	
445	Eastern White Pine	55	Fair	4
446	Eastern White Pine	54	Fair	4
447	Ash Species	49	Dead	
448	Eastern White Pine	43	Dead	
449	Northern Red Oak	61	Fair	4
451	Black Walnut	54	Fair	4
452	Norway Maple	57	Fair	4
453	Norway Maple	54	Fair	4
454	Northern Red Oak	55,60	Fair	
455	Norway Maple	23	Fair	2
456	Norway Maple	18	Fair	1
457	Norway Maple	23	Fair	2
458	Norway Maple	22	Fair	1
339	Beech	26	Fair	2
464	Norway Maple	21	Fair	1
467	Norway Maple	20	Fair	1
468	Black Locust	37	Fair	2
469	Black Cherry	23	Dead	
470	Black Locust	36	Fair	2
471	Black Locust	54	Fair	4
473	Green Ash	15	Fair	1
482	Eastern White Pine	49	Fair	3
483	Black Locust	41	Fair	3
483.1	White Spruce	26.0	Fair	2

**ARBORIST REPORT  
PROPOSED RESIDENTIAL DEVELOPMENT  
904 MISSISSAUGA HEIGHTS DRIVE, MISSISSAUGA, ONTARIO**

KEY	SPECIES	CALIPER (cm)	HEALTH G/F/P	COMPENSATION
484	Black Locust	36	Fair	2
485	Black Locust	34	Fair	2
486	Black Locust	17	Fair	1
487	Black Locust	32	Fair	2
487.1	Norway Maple	25.0	Good	2
489	Black Locust	36	Fair	2
490	Eastern White Pine	41	Fair	3
490.1	Shagbark Hickory	22.5	Good	2
491	Eastern White Pine	56	Fair	4
491.1	Scots Pine	35.5	Fair	2
493	Scots Pine	28	Fair	2
493.1	White Oak	45.0	Poor	
494	Norway Maple	25	Fair	2
494.1	White Spruce	25.0	Poor	
495	Norway Maple	22	Fair	1
495.1	Shagbark Hickory	31.0	Good	2
496	Norway Maple	19	Fair	1
496.1	Norway Maple	25.0	Good	2
497	Paper Birch	20,25	Fair	
497.1	White Pine	75.0	Good	5
498	Eastern White Pine	62	Fair	4
498.1	Shagbark Hickory	17.5	Good	1
499.1	Norway Maple	22.0	Good	1
500	Scots Pine	36	Fair	2
500.1	Norway Maple	17.5	Good	1
501	Norway Spruce	55	Fair	4
502	Eastern White Pine	61	Dead	
503	Norway Spruce	48	Fair	3
504	Paper Birch	25	Fair	2
505	Paper Birch	30	Dead	
506	Norway Spruce	38	Fair	3
507	Paper Birch	30	Dead	
508	Norway Spruce	42	Fair	3
509	Paper Birch	42	Dead	
510	Norway Spruce	38	Fair	3
511	Norway Spruce	51	Fair	3
512	Norway Spruce	22,40	Fair	
513	Paper Birch	28	Dead	
514	Norway Spruce	55	Fair	4
515	Norway Spruce	36	Fair	2
516	Norway Spruce	26	Fair	2
517	Norway Spruce	48	Fair	3
520	Silver Maple	131	Fair	9

KEY	SPECIES	CALIPER (cm)	HEALTH G/F/P	COMPENSATION
521	Norway Spruce	48	Fair	3
527	Northern Red Oak	51	Fair	3
528	Norway Maple	19	Fair	1
529	Norway Maple	18	Fair	1
530	Shagbark Hickory	18	Fair	1
531	Eastern White Pine	73	Dead	
532	Sugar Maple	17	Fair	1
533	Sugar Maple	15	Fair	1
534	Sugar Maple	28	Fair	2
535	Shagbark Hickory	32	Fair	2
536	White Spruce	25	Dead	
537	Sugar Maple	69	Fair	5
538	Sugar Maple	31	Fair	2
539	Sugar Maple	69	Fair	5
540	White Oak	48	Fair	3
541	Sugar Maple	30,80	Fair	5
806	Black Cherry	15	Dead	
807	Apple Species	15,17	Fair	1
808	Norway Maple	17	Fair	1
811	White Ash	16	Fair	1
820	Norway Maple	15	Fair	1
824	Norway Maple	17	Fair	1
835	Norway Maple	16	Fair	1
851	Norway Maple	15	Fair	1
854	Norway Maple	15	Fair	1
855	White Mulberry	17,20	Fair	1
856	Eastern Cottonwood	23	Fair	2
860	Norway Maple	16	Fair	1
861	Norway Maple	16	Fair	1
862	Norway Maple	16	Fair	1

**Total of 331 Compensation Trees**

**ARBORIST REPORT  
PROPOSED RESIDENTIAL DEVELOPMENT  
904 MISSISSAUGA HEIGHTS DRIVE, MISSISSAUGA, ONTARIO**

**Tree Preservation Recommendations**

The following tree protection measures are recommended to be undertaken by the builder in order to successfully preserve the trees noted on the Tree Preservation Plans.

**Pre-Construction**

- Prior to the commencement of any site works, all trees to be preserved will be protected with City approved framed tree protection hoarding. This hoarding shall be maintained for the duration of site construction. It shall not be removed until authorized by the Consulting Arborist or the City.
- Once installed, the limits of protection hoarding shall be approved in the field by the Consulting Arborist and the City of Mississauga, Urban Forestry Department.

**During Construction**

- Areas within the protection hoarding shall remain undisturbed for the duration of site construction and shall not be used for the storage of excavated fill, building materials, structures or equipment.
- Minor grading works will be permitted at the edge of the preservation zone as required to correct localized depressions or blend grade to limit of site works. This work to be undertaken under the review of the Consulting Arborist.
- Where root systems of trees to be preserved are exposed or damaged by construction work, they shall be trimmed neatly by a qualified Arborist in accordance with acceptable arboricultural practice. The exposed area shall be backfilled with appropriate material to prevent desiccation.
- No cables of any type shall be wrapped around or installed in trees to be preserved. No contaminants will be dumped or flushed where feeder roots of trees exist.

**Post-Construction**

- Following construction, the limits of the “Tree Protection Zone” shall be inspected by the Consulting Arborist. Any pruning, watering, fertilization or replacement requirements will be determined at that time.
- Tree protection hoarding may be removed to facilitate final landscape fine grading and tree planting. This must be completed under the review of the Consulting Arborist.

To ensure that the above measures are properly implemented, the Consulting Arborist shall be involved at the following stages of construction in the vicinity of the tree preservation zones:

1. Upon layout and installation of protective hoarding.
2. Periodically during construction to ensure that hoarding remains in place and no damage occurs to trees to be preserved.
3. Upon fine grading of site or other landscape works
4. Upon completion of construction activities



**ARBORIST REPORT  
PROPOSED RESIDENTIAL DEVELOPMENT  
904 MISSISSAUGA HEIGHTS DRIVE, MISSISSAUGA, ONTARIO**

**Conclusion**

Strybos Barron King Ltd. was retained Investex Holdings Limited, c/o Mario Polla to prepare an Arborist Report for the subject property in accordance with the City of Mississauga Tree Bylaw requirements. The report summarizes the trees inventoried and provides recommendations for retention or removal in context with the proposed site plan. 169 trees are recommended for removal and a tree permit will be required. The attached Tree Preservation Plan is to be used as reference with this report.

The report contains general recommendations for tree protection, preservation and remediation for trees within proximity to the proposed construction works.

Prepared By:

**STRYBOS BARRON KING LTD.**

A handwritten signature in black ink that reads "Matt Gehres". The signature is written in a cursive, flowing style.

**Matthew Gehres**

*I.S.A. Certified Arborist #ON-1114A*

**ARBORIST REPORT  
PROPOSED DEVELOPMENT  
904 MISSISSAUGA HEIGHTS DRIVE  
MISSISSAUGA, ONTARIO**

**Appendix A -SITE PHOTOGRAPHS**



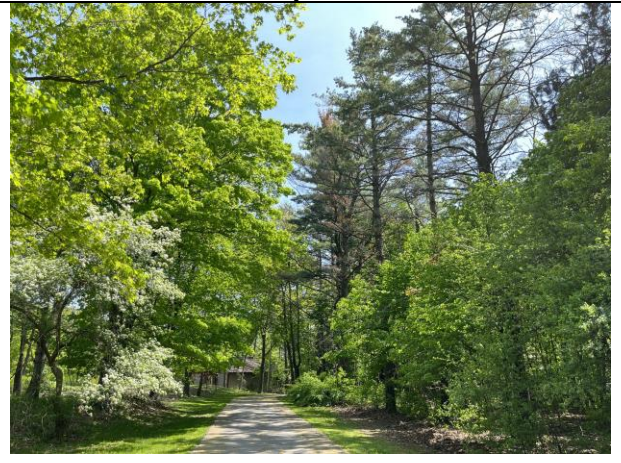
Driveway Entrance



Driveway view east



Driveway view east



Driveway view east



End of Driveway before ex. dwelling



Wooded area south of driveway



**ARBORIST REPORT**  
**PROPOSED RESIDENTIAL DEVELOPMENT**  
**904 MISSISSAUGA HEIGHTS DRIVE, MISSISSAUGA, ONTARIO**



Area north of existing dwelling



Rear of existing dwelling view south



Rear of existing dwelling view north



Southeast corner of existing dwelling view west

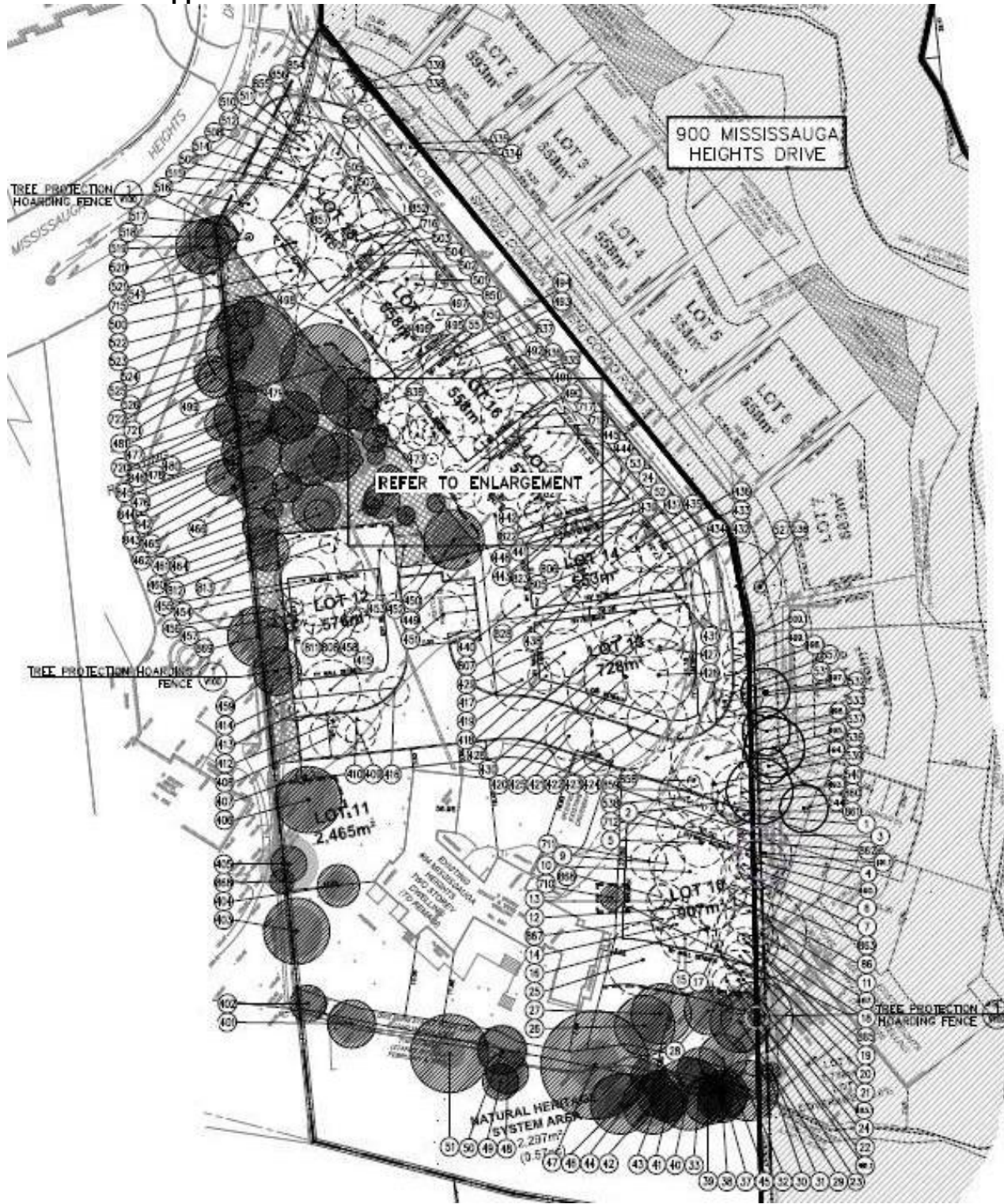


South property limit view west



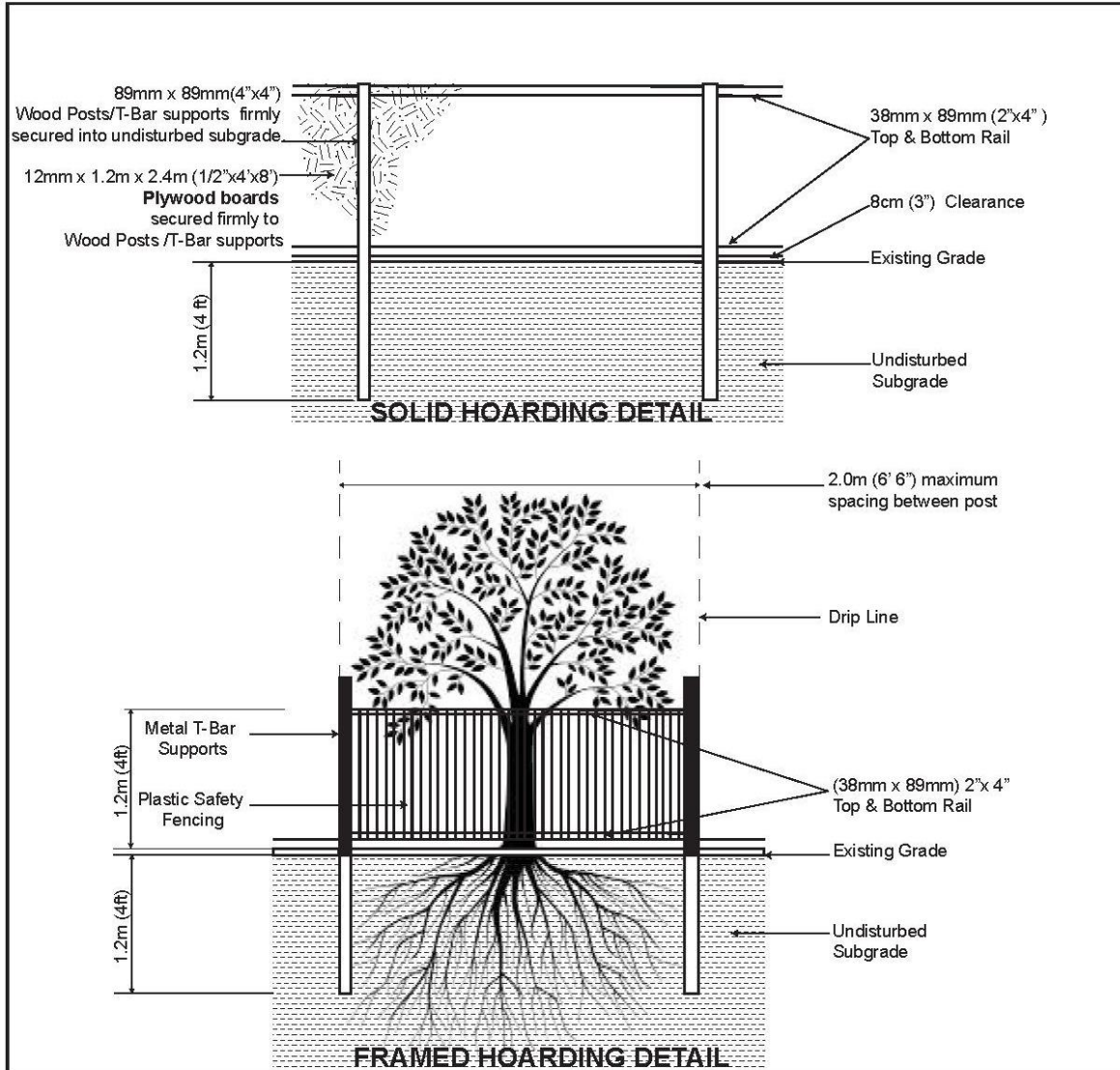
**ARBORIST REPORT  
PROPOSED DEVELOPMENT  
904 MISSISSAUGA HEIGHTS DRIVE  
MISSISSAUGA, ONTARIO**

**Appendix B – CONTEXTUAL TREE INVENTORY & PRESERVATION PLAN**



**ARBORIST REPORT  
PROPOSED DEVELOPMENT  
904 MISSISSAUGA HEIGHTS DRIVE  
MISSISSAUGA, ONTARIO**

**Appendix C - TREE PROTECTION HOARDING DETAILS**



**NOTES:**

1. Hoarding details to be determined following initial site inspection.
2. Private tree hoarding to be approved by Development & Design ;  
City tree hoarding to be approved by Community Services Dept.
3. Hoarding must be supplied, installed and maintained by the applicant throughout all phases of construction.  
**Inspection must be conducted by the Development and Design Division prior to removing any/all private hoarding.**
4. Do not allow water to collect and pond behind or within hoarding.
5. T-bar supports are acceptable alternative to 4x4 posts. U-shaped metal supports will not be accepted.
6. Plywood must be utilized for 'solid' hoarding. OSB/Chipboard will not be accepted for solid hoarding. Plywood sheets must be installed on "construction" side of frame.
7. Applicant is responsible to ensure utility locates are completed within city boulevard prior to installing framed hoarding.

**TREE PRESERVATION HOARDING**

