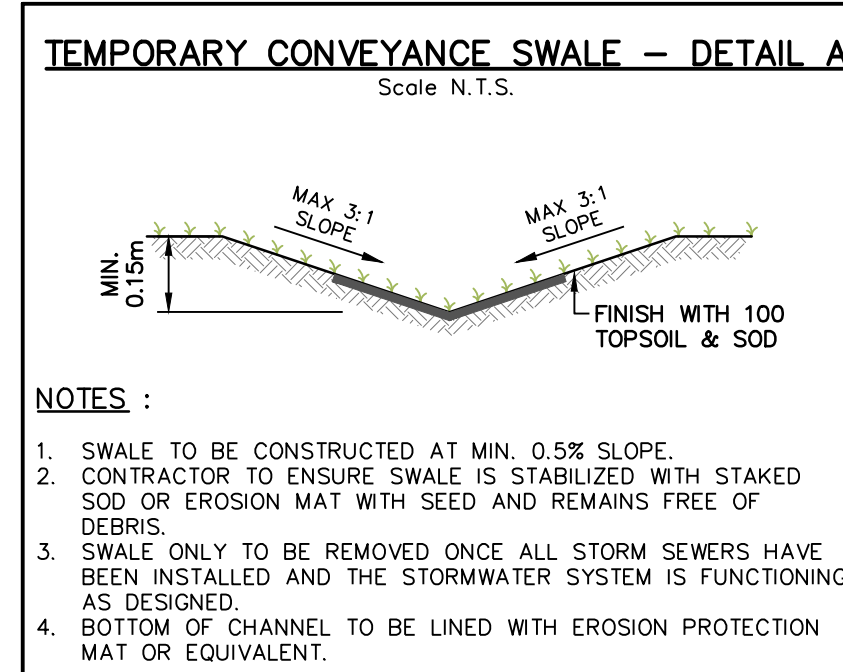


EROSION CONSTRUCTION SEQUENCING

- INSTALL STAGE 1 ESC MEASURES IN ACCORDANCE WITH SEQUENCE ON C101A
- ROUGH SITE GRADING
 - STRIP TOPSOIL AND CONDUCT EARTHWORKS IN A LOGICAL SEQUENCE TO MINIMIZE AREAS WHERE SOIL IS EXPOSED.
 - PREPARE ROUGH GRADING OF CLOVER BEND TERRACE.
- FINE GRADING OF ROADWAY
 - ROADWAY TO BE FINE-GRADED TO THE PROPOSED SUBGRADE.
 - INSTALLATION OF STORM SEWER INFRASTRUCTURE.
 - PROTECT STORM SEWER INFRASTRUCTURE WITH SEDIMENT TRAPS.
 - PLACEMENT OF GRANULAR ROAD MATERIAL.
- TOPWORKS
 - STRUCTURES TO BE ADJUSTED TO FINAL GRADE.
 - PLACEMENT OF ASPHALT MATERIALS.
 - TOPSOIL AND SOD TO BE PLACED IN THE RIGHT OF WAY.
 - TOPSOIL AND SEED TO BE DISTRIBUTED THROUGHOUT LOTS.
 - DECOMMISSIONING OF CONVEYANCE SWALES.



TOPSOIL AND EROSION AND SEDIMENT CONTROL (ESC) MANAGEMENT STRATEGY

THE EROSION AND SEDIMENT CONTROLS SHALL BE A MULTI BARRIER APPROACH TO PREVENT EROSION DURING CONSTRUCTION TO DEAL WITH SEDIMENT TRANSPORT AT SOURCE AND TO MINIMIZE SEDIMENT TRANSPORT FROM LEAVING THE SITE. THE MITIGATION MEASURES OUTLINED BELOW SHALL BE MAINTAINED BY THE CONTRACTOR THROUGH REGULAR INSPECTIONS, MONITORING AND MAINTENANCE UNTIL THE SOIL HAS BEEN STABILIZED. THE CONTRACTOR SHALL KEEP A COPY OF THE ESC PLANS AND THE TORONTO AND REGION CONSERVATION AUTHORITY, EROSION AND SEDIMENT CONTROL GUIDELINE, DECEMBER 2006, ON SITE AT ALL TIMES.

GENERAL NOTES

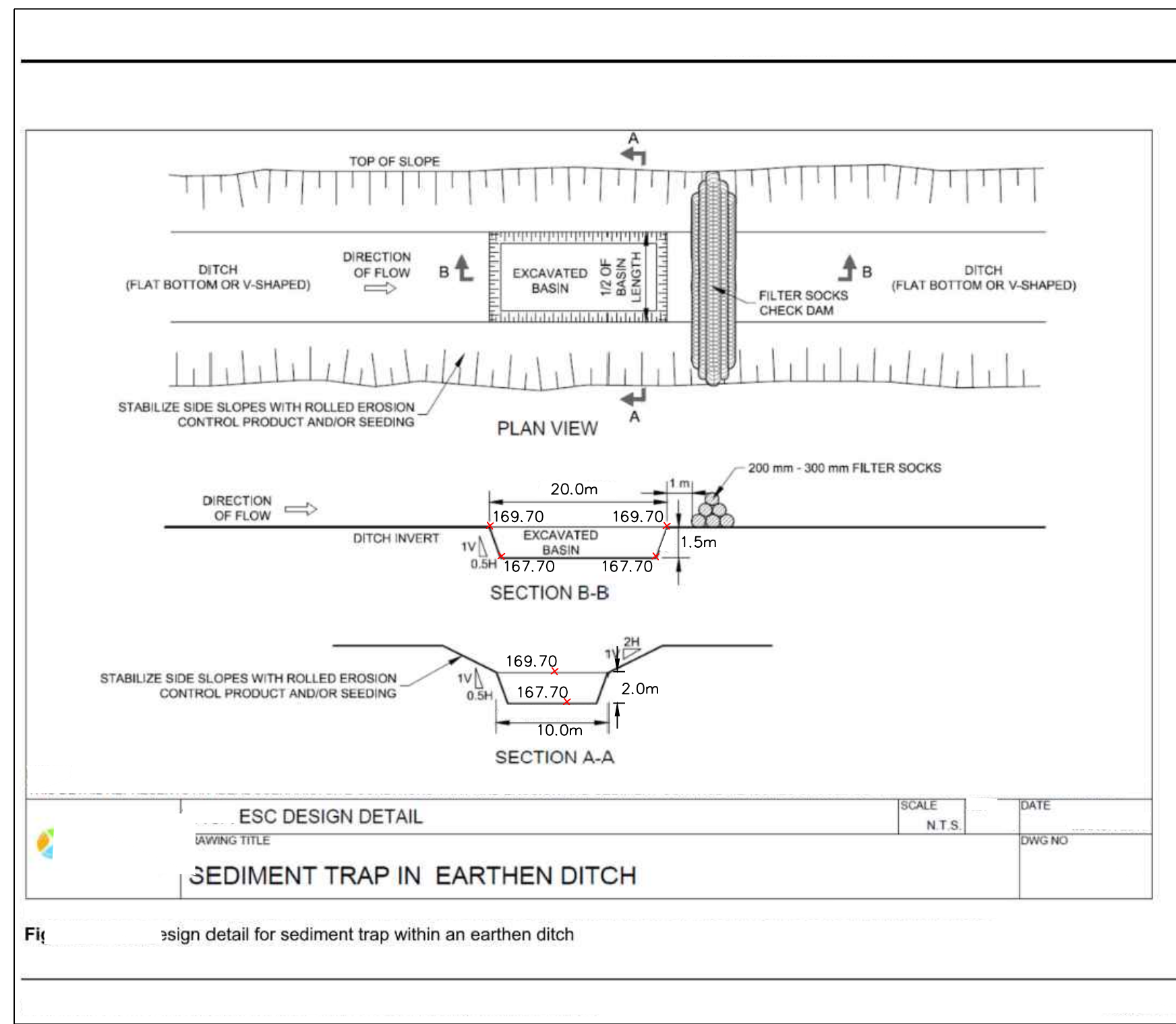
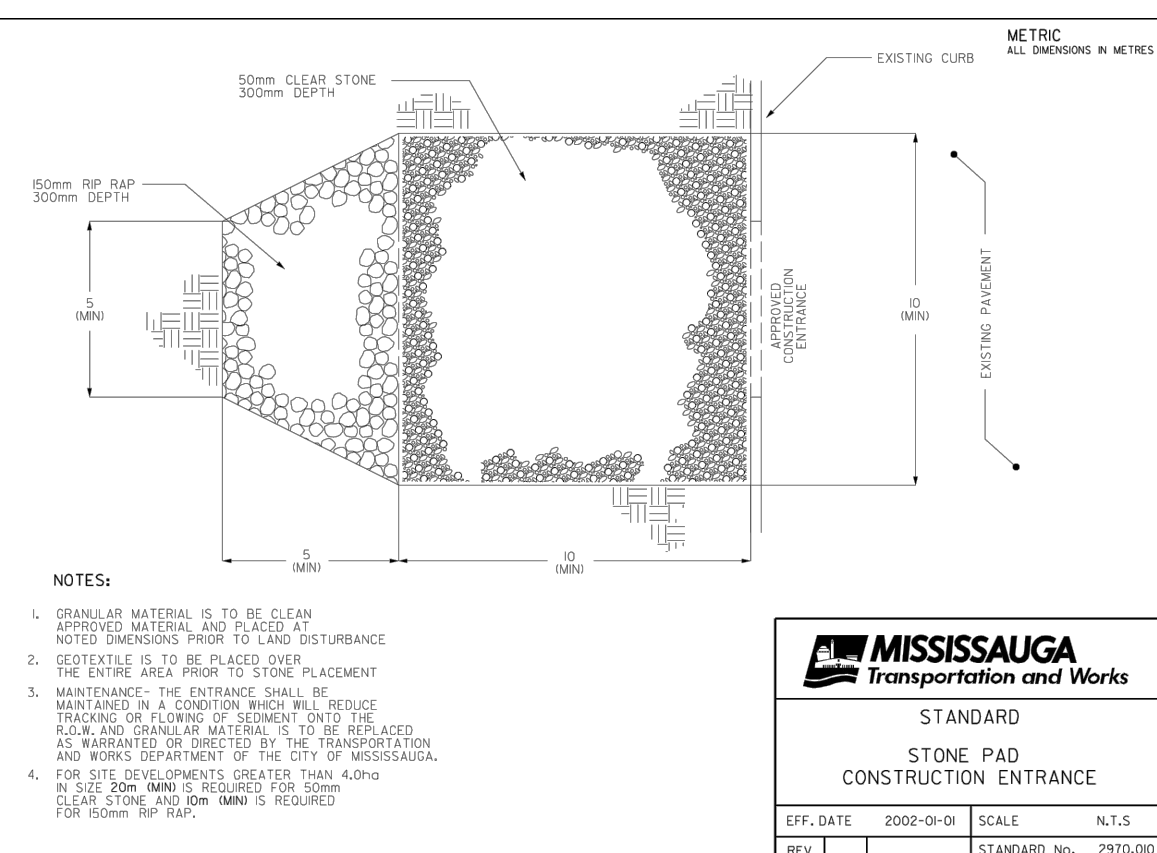
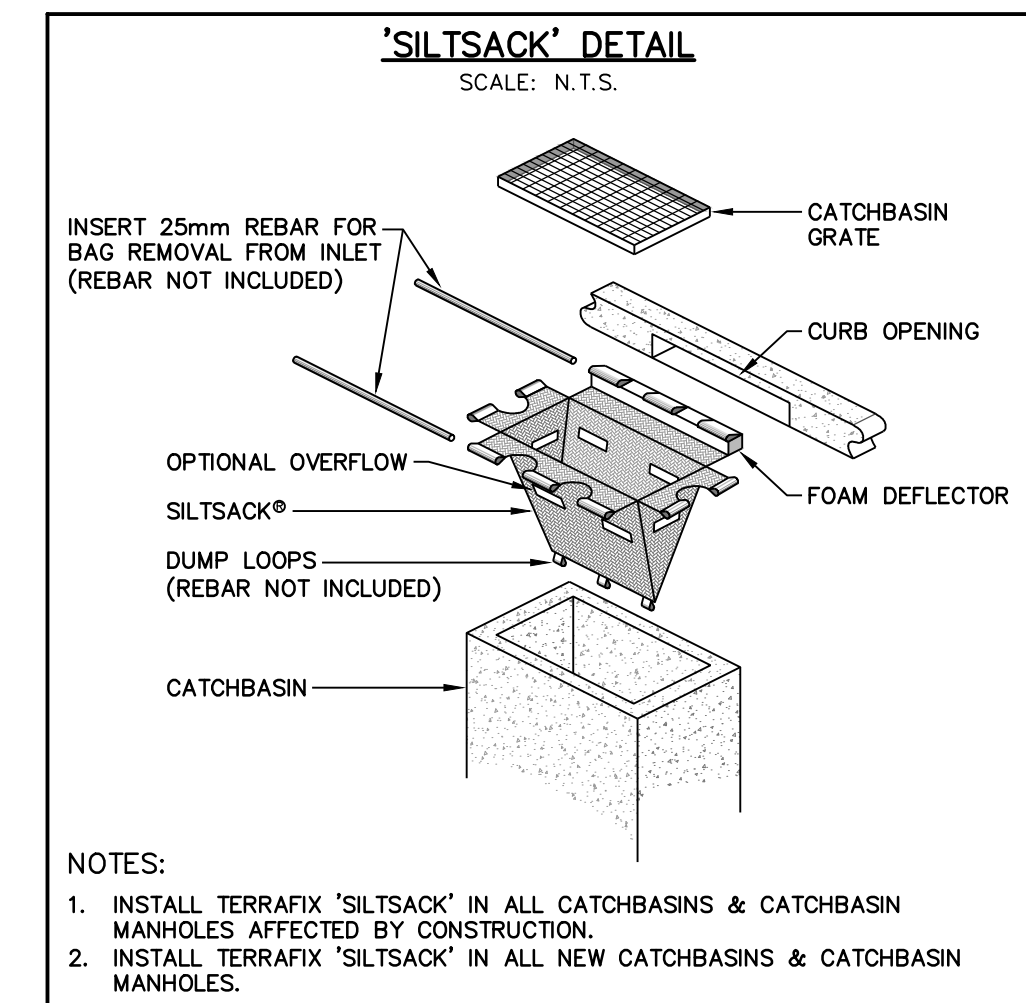
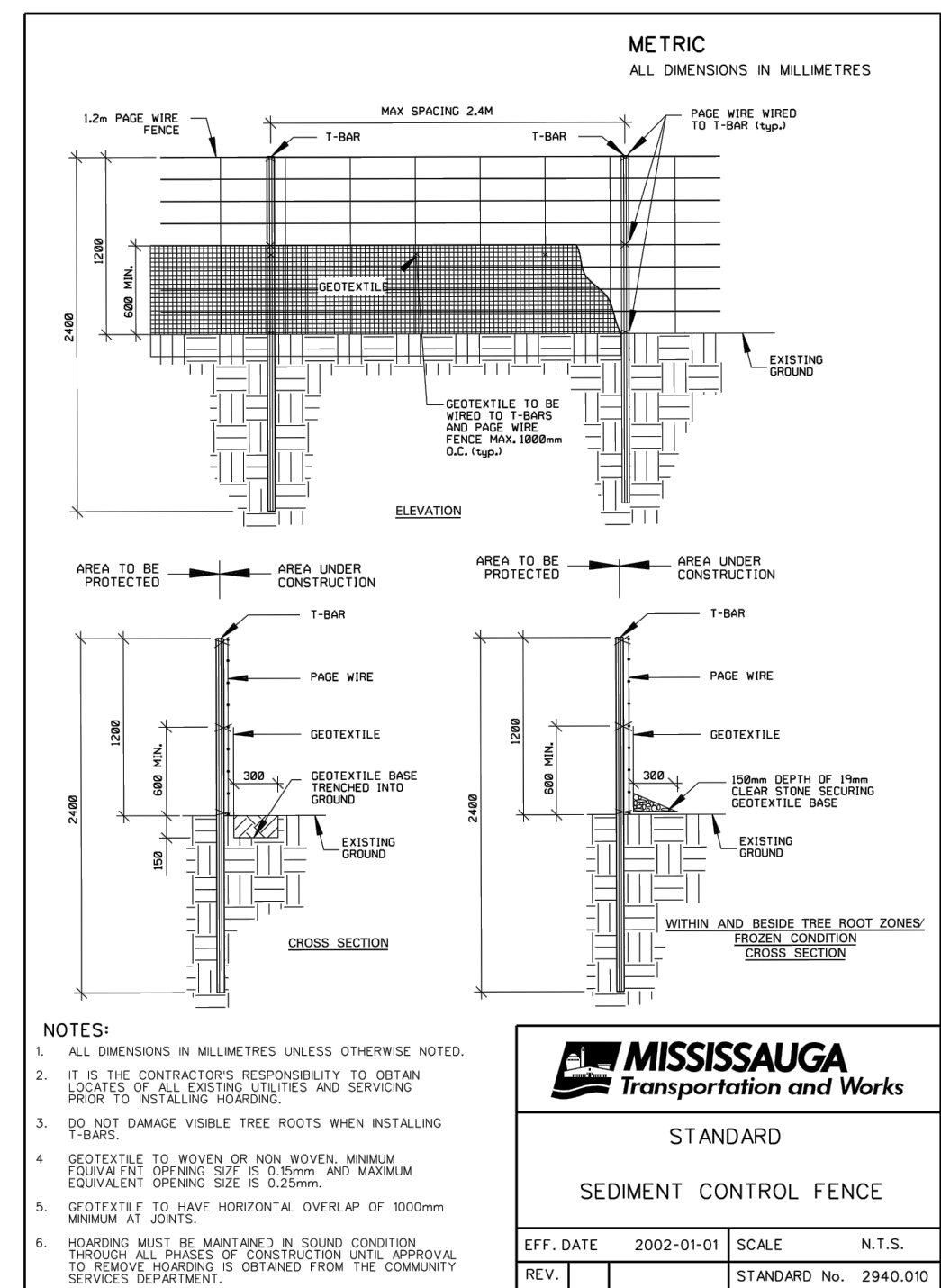
- EROSION AND SEDIMENT CONTROL (ESC) MEASURES WILL BE IMPLEMENTED PRIOR TO, AND MAINTAINED DURING THE CONSTRUCTION PHASES TO PREVENT ENTRY OF SEDIMENT INTO THE WATER. ALL DAMAGED EROSION AND SEDIMENT CONTROL MEASURES SHOULD BE REPAIRED AND/OR REPLACED WITHIN 48 HOURS OF THE INSPECTION.
- THE EROSION AND SEDIMENT CONTROL STRATEGIES OUTLINED ON THE PLANS ARE NOT STATIC AND MAY NEED TO BE UPGRADED / AMENDED AS SITE CONDITIONS CHANGE TO MINIMIZE SEDIMENT LADEN RUNOFF FROM LEAVING THE WORK AREAS. IF THE PRESCRIBED MEASURES ON THE PLANS ARE NOT EFFECTIVE IN PREVENTING THE RELEASE OF A DELETERIOUS SUBSTANCE, INCLUDING SEDIMENT, THEN ALTERNATIVE MEASURES MUST BE IMPLEMENTED IMMEDIATELY TO MINIMIZE POTENTIAL ECOLOGICAL IMPACTS. TRCA ENFORCEMENT OFFICER SHOULD BE IMMEDIATELY CONTACTED. ADDITIONAL ESC MEASURES ARE TO BE KEPT ON SITE AND USED AS NECESSARY.
 - AN ENVIRONMENTAL MONITOR WILL ATTEND THE SITE TO INSPECT ALL NEW CONTROLS, AS WELL AS ON A REGULAR BASIS, OR FOLLOWING RAIN/SNOWMELT EVENT, TO MONITOR ALL WORKS, AND IN PARTICULAR WORKS RELATED TO EROSION AND SEDIMENT CONTROLS. SHOULD CONCERNS ARISE ON SITE THE ENVIRONMENTAL MONITOR WILL CONTACT THE TRCA ENFORCEMENT OFFICER AS WELL AS THE CONTRACTOR.
 - ALL ACTIVITIES, INCLUDING MAINTENANCE PROCEDURES, WILL BE CONTROLLED TO PREVENT THE ENTRY OF PETROLEUM PRODUCTS, DEBRIS, RUBBLE, CONCRETE OR OTHER DELETERIOUS SUBSTANCES INTO THE WATER. VEHICULAR REFUELLING AND MAINTENANCE WILL BE CONDUCTED A MINIMUM OF 30M FROM THE WATER.

EROSION CONTROLS

- THE CONTRACTOR SHALL MONITOR THE WEATHER SEVERAL DAYS IN ADVANCE OF THE ONSET OF THE PROJECT TO ENSURE THAT THE WORKS WILL BE CONDUCTED DURING FAVOURABLE WEATHER CONDITIONS. SHOULD AN UNEXPECTED STORM ARISE, THE CONTRACTOR WILL REMOVE ALL UNFIXED ITEMS FROM THE STORM FLOOD PLAN THAT WOULD HAVE THE POTENTIAL TO CAUSE A SPILL OR AN OBSTRUCTION TO FLOW, E.G., FUEL TANKS, PORTA-POTTIES, MACHINERY, EQUIPMENT, CONSTRUCTION MATERIALS, ETC.
- ALL DEWATERING SHALL BE TREATED AND RELEASED TO THE ENVIRONMENT AT LEAST 30m FROM A WATERCOURSE OR WETLAND AND ALLOWED TO DRAIN THROUGH A WELL-VEGETATED AREA. NO DEWATERING EFFLUENT SHALL BE SENT DIRECTLY TO ANY WATERCOURSE, WETLAND OR FOREST, OR ALLOWED TO DRAIN ONTO DISTURBED SOILS WITHIN THE WORK AREA. THESE CONTROL MEASURES SHALL BE MONITORED FOR EFFECTIVENESS AND MAINTAINED OR REVISED TO MEET THE OBJECTIVE OF PREVENTING THE RELEASE OF SEDIMENT LADEN WATER.
- THE CONTRACTOR SHALL MINIMIZE THE AREA OF DISTURBANCE AT ANY ONE TIME TO LIMIT THE DURATION OF SOIL EXPOSURE. CONSTRUCTION SHALL BE PHASED AS NECESSARY AND AREAS STABILIZED AS THE WORK PROGRESSES. AREAS DISTURBED AND LEFT EXPOSED FOR MORE THAN 15 DAYS TO BE PROTECTED WITH LAYER OF STRAW MULCH, TO THE SATISFACTION OF THE ENGINEER.
- THE CONTRACTOR SHALL RETAIN AS MUCH EXISTING VEGETATION AS POSSIBLE BY LIMITING THE DISTURBANCE TO NON-ESSENTIAL AREAS AND STABILIZE EXPOSED SOILS QUICKLY. THE PROPOSED VEGETATION SPECIFICATION INCLUDES A FAST GERMINATING SEED MIX TO QUICKLY ESTABLISH GROUND COVER AND SHALL BE APPLIED WITHIN 15 DAYS OF COMPLETING THE CONSTRUCTION ACTIVITY. THE CONTRACTOR SHALL ENSURE THAT THE PROPOSED VEGETATION GERMINATES AND ESTABLISHES QUICKLY AND SHALL REAPPLY THE GROUND COVER MIX AS DIRECTED BY THE ENGINEER UNTIL A SUITABLE VEGETATED GROUND COVER IS IN PLACE.
- THE CONTRACTOR SHALL MINIMIZE THE SLOPE LENGTH AND GRADIENT OF DISTURBED AREAS, MAINTAIN OVERLAND SHEET FLOW AND AVOID CONCENTRATED FLOWS.
- THE CONTRACTOR SHALL ENSURE ALL TEMPORARY TOPSOIL AND EARTH STOCKPILES ARE PLACED MORE THAN 30M FROM A WATERCOURSE AND SEPARATED BY SILT FENCE AND A NATURAL VEGETATED AND / OR UNDISTURBED AREA.
- THE CONTRACTOR SHALL SHAPE AND GRADE TEMPORARY TOPSOIL STOCKPILE TO A MAXIMUM SLOPE OF 1.5:1 AND STABILIZE WITHIN 30 DAYS OF COMPLETION OF STOCKPIILING.

SEDIMENT CONTROLS

- SILT FENCE TO BE INSTALLED IN LOCATIONS SHOWN ON PLAN AND AS DIRECTED BY SITE ENGINEER.
- SILT FENCE MUST BE INSPECTED WEEKLY FOR RIPS OR TEARS, BROKEN STAKES, BLOW-OUTS AND ACCUMULATION OF SEDIMENT.
- SILT FENCE MUST BE INSPECTED FOLLOWING ALL 15mm OR GREATER RAIN STORM EVENTS OR AS DIRECTED BY SITE ENGINEER.
- SEDIMENT MUST BE REMOVED FROM SILT FENCE WHEN ACCUMULATION REACHES 50% OF THE HEIGHT OF FENCE.
- ALL SILT FENCES MUST BE REMOVED ONLY WHEN THE ENTIRE SITE IS STABILIZED AND AS DIRECTED BY THE ENGINEER.
- STONE MUD MAT TO BE INSTALLED PRIOR TO CONSTRUCTION ON SITE.
- REMOVE ACCUMULATED SEDIMENT UPSTREAM OF ROCK CHECK DAM IF GREATER THAN ONE HALF OF DAM HEIGHT.
- SILT REMOVAL FROM ROCK CHECK DAMS MUST BE UNDERTAKEN WITH CARE TO MINIMIZE DOWNSTREAM SEDIMENTATION IN SWALE OR DITCH.
- SEDIMENT TO BE CLEANED FROM TEMPORARY SEDIMENT TRAP ONCE ACCUMULATION REACHES 50% OF CAPACITY.
- SEDIMENT SHALL BE CLEANED FROM PUBLIC ROADS AT THE END OF EACH DAY, OR AS DIRECTED BY THE ENGINEER.
- NUMVILLE ROAD TO BE MONITORED DAILY AND SCRAPED, SWEEPED, AND FLUSHED AS NECESSARY.



No.	ISSUE / REVISION	DATE
2	ISSUED FOR 3rd SUBMISSION	2023/SEP/27
1	ISSUED FOR 2nd SUBMISSION	2021/DEC/03
0	ISSUED FOR 1st SUBMISSION	2020/NOV/20

ELEVATION NOTE:
ELEVATIONS SHOWN ON THIS PLAN ARE DERIVED FROM THE CITY OF MISSISSAUGA BENCHMARK No. 075023031
ELEVATION = 169.073m

SURVEY NOTES:
SURVEY COMPLETED BY SPEIGHT, VAN NOSTRAND & GIBSON LMD. (2018/APR/22)
REFERENCE No.: 1-RCP 1542 PEEL
BEARINGS ARE UTM GRID, DERIVED FROM RTN OBSERVATIONS
UTM ZONE 17, NAD83 (GSR5) (2010.0)
DISTANCES ARE GROUND AND CAN BE CONVERTED TO GRID BY MULTIPLYING BY THE COMBINED SCALE FACTOR OF 0.99996781

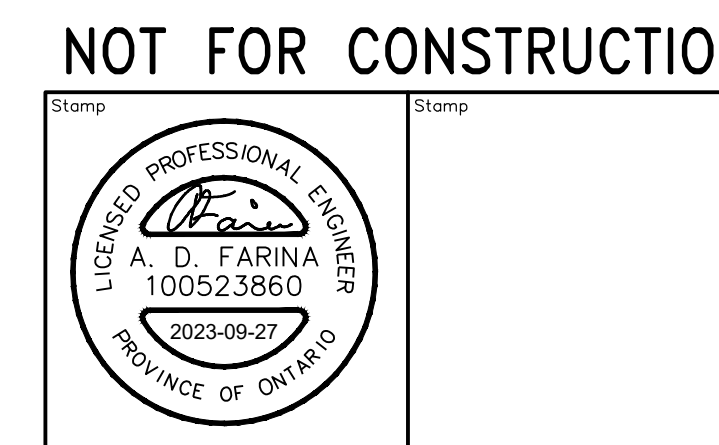
SITE PLAN NOTES:
DESIGN ELEMENTS ARE BASED ON SITE PLAN BY GLOBAL ARCHITECTURE INC. DRAWING No.: A101_ (2023/JULY/20)
JOB No.: 22-05
DRAWING NOTES:
THIS DRAWING IS THE EXCLUSIVE PROPERTY OF C.F. CROZIER & ASSOCIATES INC. AND THE REPRODUCTION OF ANY PART OF IT WITHOUT PRIOR WRITTEN CONSENT OF THIS OFFICE IS STRICTLY PROHIBITED.
THE CONTRACTOR SHALL VERIFY ALL DIMENSIONS, LEVELS, AND DATUMS ON SITE AND REPORT ANY DISCREPANCIES OR OMISSIONS TO THIS OFFICE PRIOR TO CONSTRUCTION. THIS DRAWING IS TO BE READ AND UNDERSTOOD IN CONJUNCTION WITH ALL OTHER PLANS AND DOCUMENTS APPLICABLE TO THIS PROJECT. DO NOT SCALE THIS DRAWING. ALL EXISTING UNDERGROUND UTILITIES TO BE VERIFIED IN THE FIELD BY THE CONTRACTOR PRIOR TO CONSTRUCTION.

Project: **DYMON GROUP OF COMPANIES**
3855-3915 DUNDAS STREET WEST
CITY OF MISSISSAUGA

Drawing: **EROSION & SEDIMENT CONTROL**
NOTES & DETAILS

CROZIER CONSULTING ENGINEERS
211 YONGE STREET SUITE 301
TORONTO, ON M5B 1M4
416-477-3392 T
WWW.CFCROZIER.CA

Drawn	Design	Project No.
I.M./D.B.	I.M./A.D.F.	1644-5477
Check	Scale	Dwg.
A.D.F.	A.S.	1:500 C 101A



Stamp